

FARMERS AND CONSUMERS

700th Anniversary 1917 - 2017

MARKET BULLETIN

GEORGIA DEPARTMENT OF AGRICULTURE • GARY W. BLACK, COMMISSIONER • WEDNESDAY, DECEMBER 6, 2017 • VOL. 100, NO. 25 • © COPYRIGHT 2017

Georgia's peach farmers hope for a colder winter this year

By Clint Thompson

Cooler temperatures are needed this winter to avoid another disastrous peach season, according to Jeff Cook, University of Georgia Cooperative Extension county coordinator in Taylor and Peach counties.

Last year's mild winter contributed to Georgia's peach industry suffering an 80 percent loss. Cook estimates that 70 percent of those losses were attributed to Georgia's lack of chill hours. The late freeze this past spring contributed to the other 10 to 15 percent peach loss, Cook said.

"Chill hours are vital to the development of a peach. We didn't have enough cold weather last year, and it showed once we got to harvest time," said Cook, who specializes in peaches.

"Chill hours" refers to the time in which temperatures dip below 45 degrees Fahrenheit. From Oct. 1 through Feb. 15, chill hours are required for peach production.

According to Cook, one Georgia peach variety requires 850 chill hours, the highest chill requirement of all varieties grown in Georgia. When that particular variety only got around 450 chill hours last winter, the result was devastating for Georgia peach farmers. At least 800 hours are needed to make a "decent crop," he said.

"We had between 650 and 700 (chill hours) year-before-last and did okay. Last year we were below 500 and we really need about 800," Cook said.

The biggest hit to Georgia's 2017 peach crop was the lack of peaches from July to August, which is typically the largest yielding period.

"The packing sheds were shut down the first of July," Cook said.

Unfortunately for Georgia peach producers, this year's winter forecast is projecting a warmer winter due to La Niña weather conditions. UGA Extension Agricultural Climatologist Pam Knox predicts a 70 percent chance of La Niña conditions occurring from November 2017 through January 2018. La Niña is associated with above-normal temperatures and below-normal precipitation, especially in the southern half of Georgia.

Knox emphasizes that even in a La Niña winter, outbreaks of cold air could still provide chill hours to the peach crop.

"My expectation this year is that chill hours will be lower than normal but are likely to be higher than last year's low numbers," Knox said. "As we transition to neutral conditions in the spring, we also need to be mindful of the possibility of a late frost. Growers will have to keep an eye on conditions in the spring for any cold out-

breaks that might come."

Dario Chavez, a UGA College of Agricultural and Environmental Sciences assistant professor in peach research on the UGA Griffin campus, said the peach industry in Georgia should know by the end of December or early January how this winter will compare to previous years.

"It's a weather factor so we really can't do anything about it. It would be different if it were cold and we wanted to protect (the peaches) against the cold. That's something we can do. Making it cold when it's warm — it's impossible," Chavez said.

For more information on Georgia's peach industry, see the UGA Extension blog at blog.extension.uga.edu/peaches/.

-Clint Thompson is a news editor with the University of Georgia College of Agricultural and Environmental Sciences based in Tifton.



UGA College of Agricultural and Environmental Sciences

"Chill hours" refers to the time in which temperatures dip below 45 degrees Fahrenheit. From Oct. 1 through Feb. 15, chill hours are required for peach production.



Amy Carter/GDA

A 25-foot red cedar selected to serve as the 2017 Georgia Capitol Christmas Tree arrived in Atlanta on a flatbed trailer.

Oh, Christmas Tree!

Although the inches slowly became feet and the minutes quickly became hours, Christmas finally arrived at the State Capitol Nov. 27 in the form of a 25-foot red cedar. Freshly dug from private land in Locust Grove, the tree was artfully maneuvered into place using a crane, a winch, miles of rope and the brute strength of many men. The tree will be on display in the rotunda throughout December.



A crane operated by Heaton Erectors of Forest Park is used to lift the 3,500-pound tree up to the east entrance of the State Capitol.



The tree is winched into the rotunda as personnel from the Georgia Building Authority and Downey Tree Service of Cumming tie ropes to the trunk in preparation to raise the tree.



The tree vertical, anchored and ready for decorations. Crews had hoped to use a winch to stand the tree up, but ultimately had to raise it by hand.



Aaron Muhammad worked with Fatima Jones, farm loan manager at the Farm Service Agency in Dawson, to obtain a youth loan to purchase his chickens and to build a coop.

Georgia Youth Finds Eggs-cellent Success with FSA Youth Loan

By Dana Rogge

His vision – build an egg empire. Aaron Muhammad, 15, wasn't raised on a farm and had no prior farm experience, but he decided to try something new and discovered his passion for raising chickens. When he's not tackling his school work, he's working on building his eggs-traordinary business in Dawson.

Muhammad decided to raise chickens at the age of 12 to expand his horizons and to try something new. He worked with Fatima Jones, farm loan manager at the Farm Service Agency in Dawson, to obtain a youth loan to purchase his chickens and to build a coop.

FSA Youth Loans help youth between the ages of 10 and 21 start and operate income-producing projects in connection with their participation in 4-H, the National FFA Organization, a Tribal youth group, or other similar agricultural youth organizations. Youth Loans provide an opportunity for young entrepreneurs to acquire experience and education in agriculture-related skills.

"Since 2014, I have watched Aaron grow as a responsible youth, taking control of his egg production, keeping records of his expenses and income, making decisions, making payments on time, dealing with disaster and communicating with local FSA loan officials," Jones said.

Muhammad is currently in his third semester studying electronics technology at Albany Technical College while continuing to raise his chickens and sell eggs. He currently sells his eggs to family and friends, but would like to become a more well-known source, and supply eggs to businesses such as bakeries.

"I would like to be the first name on people's list when they need eggs," Muhammad said.

He said the Youth Loan helped him to pursue this business venture without putting a financial burden on his parents. He credits his



Muhammed currently sells his eggs to family and friends, but would like to become a more well-known source, and supply eggs to businesses such as bakeries.

parents for helping guide him through the process of building a business.

"They helped me financially and mentally by giving me tips for building a business as far as what to do and what not to do," Muhammad said.

Muhammad said through the FSA Youth Loan he has learned how to maintain a line of credit and how to pay debts on time. Aside from the business skills he has acquired, he said he has learned a lot about patience.

"In the city, everything is instant," he said. "With raising chickens, it all takes time. Time to give them water, to feed them, to watch them grow – the whole cycle takes time."

To learn more about FSA's Youth Loan program, visit www.fsa.usda.gov.

-Dana Rogge is a public affairs specialist for the USDA Farm Service Agency.

FIELD NOTES: Why do so many farmers name their tractors Allis?



By Amy Carter

So this one day in my former newsroom, I was startled when a hearty bout of mirth erupted behind the newspaper a co-worker was reading. He was the jolly owner of a wicked sense of humor, a vocabulary to make a cop blush and a belly laugh loud enough to drown out the rumble of the presses.

He worked the public safety beat, so his merriment was usually stirred by incident reports detailing encounters between the law and the dumb criminals who kept them in business. On this particular day, he got tickled by a letter to the editor that took issue with his retelling of a mishap at the city docks. To wit, a wench fell from the rigging of a shrimp boat, narrowly missing a deckhand working below.

The story caught the eye of an astute reader, who wrote to inquire after the health of the wench. Assuming she survived the fall unharmed, the burning question in this reader's mind then became: what was the wench doing up there in the first place?

I shall never, ever mistake a winch (a machine) for a wench (a woman), thanks to that reader. It ain't bragging if you really done it, and to prove that point I'll direct you to the Christmas story on Page 1, where I correctly used the word winch twice as a noun and once as a verb in homage to my merry friend.

I'm sure you've heard that old saw, "Sticks and stones may break my bones, but words can never hurt me." My Mama taught me that when I was a first-grader with a bright red birthmark running the length of the left side of my nose. That blemish eventually became my red badge of courage, so to speak, but not before it taught me two important life lessons. First, I hate the song "Rudolph the Red-Nosed Reindeer," so don't ever sing it to me if you want me to be your friend. Second, words matter. A lot.

I learned that lesson again a couple of years ago when a farmer rang me up on the telly to inform me, not unkindly, that the name of the tractor traded at a brisk rate in our pages is ALLIS CHALMERS, not Ellis Chambers or Allis Chamblers or any of the other 53 million permutations of the name that have appeared in these pages through the years.

Southern men pronounce Allis Chalmers in about 53 million different but melodic ways, and I enjoy hearing them all. Some women fall for the eyes, some for broad shoulders – me, I'm an Allis Chalmers girl. No matter how you say it, though, there's only one right way to spell it, and I lie awake at night worrying that somewhere in these pages, we've got it wrong.

We process anywhere from 600 to 800 classified ads every two weeks, plus about a dozen original news and feature stories, so you can see how things might slip through the cracks. We strive to spell every word correctly and to use them all in the correct context and tense, but sometimes we goof.

We're here to help you sell your Allis Chalmers B or John Deere Jubilee tractor quickly and profitably. We want your pecans – or puh-KAHNS – to reach hungry consumers, and we want to help you find the extra hands you need to operate your farm efficiently.

Help us out, if you will, by writing legibly if you mail or fax your ad, and proofread it before hitting the send button when submitting it electronically. Read it aloud and throw some commas in there, too, if all the words seem to run together. We've got some pretty impressive experts backing us up here, but even they scratch their heads from time-to-time over the run-on sentences we receive.

We are thankful for your continued faith in us, and our goal will always be to get as close to perfection as humanly possible. Use whatever words you'd like to let us know how we can do better.

LETTER TO EDITOR

Amy,

I wanted to take a minute to share with you the results of this year's fruit tree sale. This is the 5th year we have been raising money to support the Morgan County 4-H program and our numbers this year went far beyond our expectations. Over the past five years, our sales have slowly increased and this year we had an approximate 40 percent increase in sales over 2016.

The *Market Bulletin* has been such a blessing throughout this process. People are looking for our fundraiser sale form each year and that is exciting! This year we decided to look at how much we sold from the *Market Bulletin* so we could share that information with you – \$3,287.00 of this year's sales came from the *Market Bulletin*! That is amazing! Thank you for your support and for helping to make a difference in the lives of our Morgan County youth!

Thanks!
Shannon Cagle, Morgan County 4-H

FARMERS & CONSUMERS MARKET BULLETIN (ISSN 0889-5619)

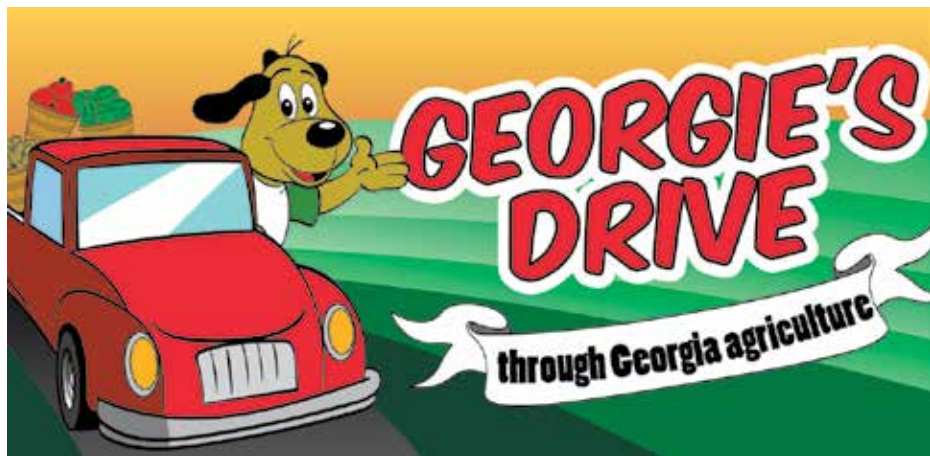
is published biweekly by the Georgia Department of Agriculture
19 Martin Luther King Jr. Drive
Atlanta, GA 30334-4250
404-656-3722 • Fax 404-463-4389
Office hours 8 a.m. to 4:30 p.m. Monday – Friday

Gary W. Black, Commissioner MARKET BULLETIN STAFF

Julie McPeake, **Chief Communication Officer**
Amy H. Carter, **Editor**
Kendall McWilliams, **Media Specialist**
Leslie Davis, **Social Media Specialist**
Erin Burnett, **Creative Projects Specialist**
Arty Schronce, **Staff Writer**

Subscriptions to the Farmers and Consumers Market Bulletin are \$10 per year. To start or renew a subscription, go to our website to pay by Visa or MasterCard, or send a check payable to the Georgia Department of Agriculture along with your name, complete mailing address and phone number to PO Box 742510 Atlanta, GA 30374-2510. Designate "Market Bulletin" in the "for" line. To determine if an existing subscription is due for renewal, look for the expiration date on the mailing address label on page 1. Postmaster: Send address changes to 19 Martin Luther King Jr. Drive, Atlanta, 30334.

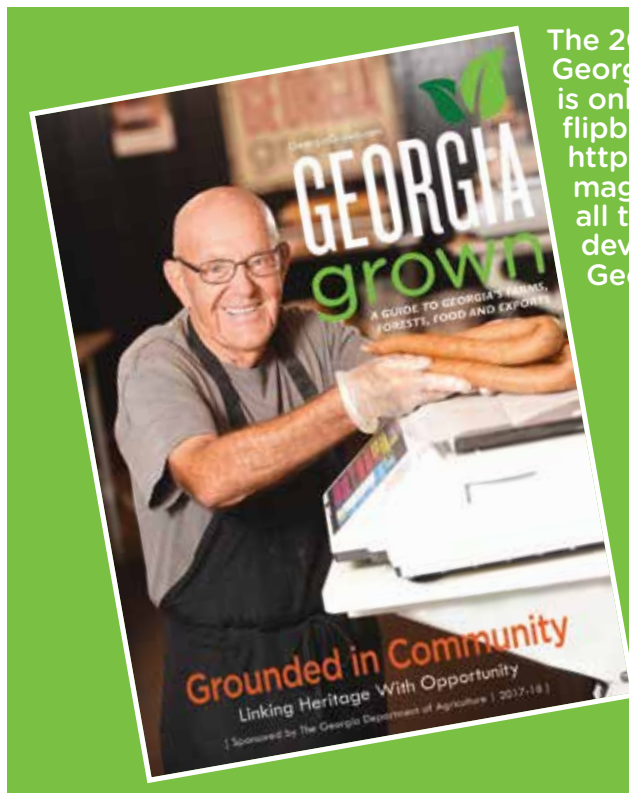
The Department does not discriminate on the basis of sex, race, color, national origin, age or disability in the admission or access to, or treatment in, its employment policy, programs or activities. The Department's Administration Division coordinates compliance with the non-discrimination requirements contained in Section 35.107 of the Department of Justice Regulations. Information concerning the provisions of the Americans with Disabilities Act, and the rights provided thereunder, are available from this division. If you require special assistance in utilizing our services, please contact us.



Editor's Note: While most dogs spend their days chasing their tails, Georgie, the Georgia Grown mascot, is off chasing his next big adventure. Georgie travels the state teaching children and adults about Georgia's No. 1 industry – agriculture. After watching his rise to stardom in the short film, "Georgie's Drive Through Georgia Agriculture," we decided to bring his stories to print. We hope you'll enjoy reading along as Georgie chases own kind of tales around Georgia. Find the video on YouTube at <https://www.youtube.com/watch?v=kLGU2pTKFsU>

Georgie's Drive Through Metter

Hello! This is your old pal Georgie, the Georgia Grown mascot. The other day, I was headed to Claxton for a Feed My School event when I stopped in Metter to see one of my favorite places in Georgia. As I got off the interstate and crossed the Michael Guido Bridge, I knew I was headed to the right place. Dr. Guido and his wife, Audrey, started Guido Gardens in 1976 as a place for folks to visit and as a backdrop to film his weekly television spot, Seeds from the Sower. The gardens are open to the public for free 24 hours a day every day, but my favorite time to go is when my wife Gina and I take the pups to see the "Nights of Lights." This special event was started in 1991 and now welcomes more than 40,000 people a year to see 1.5 million Christmas lights in the gardens. The garden displays include a life-size nativity scene and even a recreation of Noah's Ark in Christmas lights! You can only see it Dec. 15-25 from 6 pm to 9 pm daily. Like the water tank says, "Everything's Better in Metter." Especially the Christmas lights!



The 2017-2018 edition of Georgia Grown Magazine is online in a new flipbook form. Visit <http://agr.georgia.gov/magazine> to read about all the exciting new developments in Georgia agriculture.

Seed drive aims to help Puerto Rico farmers rebuild agriculture

Two category 5 storms devastated the U.S. Territory of Puerto Rico earlier this fall, leaving many without homes, power, food and other necessities.

While disaster relief missions often focus on the here-and-now necessities of storm victims, it is also important to offer assistance to help victims weather the longevity of the storms' impact. David Beall, a disaster relief volunteer, is asking Georgia farmers, gardeners and retailers to donate unused seed and supplies to disaster relief efforts.

"I just noticed that there was all of this food that is ready to go but no seeds," said Beall, who lives in Greenville. "The advantages I see by taking seed down, it would help the people in Puerto Rico get a sense of moving forward."

If you would like to donate unused seed

from your farm or operation, contact the following persons for more information:

Outdoor Direction, LLC

David Beall
1245 Threadgill Road
Greenville, GA 30222
706.289.1874

Maverick Transportation

John Willis Jr.
205 North Cherry Ave
Pine Mountain, GA 31822
706.663.4406

Crossroads Alliance

Steve Ewing
352.209.8777

COOK GEORGIA GROWN: Apple Cider Pepper Pie

This recipe from Unicoi Preserves in Sautee-Nacoochee won first place in the Apple Pie Category at Farmview Market's 2017 "Flavors of Fall Festival" in Madison Oct. 21. The recipe uses Georgia-grown apples and Unicoi Preserves Apple Cider Pepper Spread*, and is baked in a paper grocery bag. The crust comes together quickly in the food processor and uses Cabot Farmhouse Reserve Cheddar. According to owner Suzy Neal, this recipe is inspired by recipes from Martha Stewart and King Arthur Flour. *Visit unicoipreserves.com for buying info.

Ingredients

Cheddar cheese pie crust

1 1/4 cup unbleached all-purpose flour
1/2 teaspoon Kosher Salt
1 stick unsalted butter, cold, cut into small pieces
1/2 cup Cabot Farmhouse Reserve Cheddar
1/4 cup cold water

Apple Pie Filling

8 cups Georgia-grown Golden Delicious Apples, peeled, cored and sliced.
3/4 cup light brown sugar
1/2 teaspoon cinnamon
1/2 teaspoon vanilla bean paste
1/2 teaspoon freshly ground nutmeg
1/4 teaspoon Kosher Salt
2 tablespoons lemon juice
3 tablespoons Unicoi Preserves Apple Cider Pepper Spread
1 dash cayenne pepper
1/4 cup unbleached all-purpose flour

Streusel topping

1/2 cup granulated sugar
1/2 cup unbleached all-purpose flour
1/2 cup Unsalted Butter, cold, cut into slices

Instructions

Cabot Cheddar Pie Crust

Add flour and salt to the bowl of a food processor and pulse to combine. Add cold butter and pulse until the dough looks like coarse meal.

Slowly add the cold water and pulse until mixture just begins to hold together. Add additional cold water by the teaspoon if necessary to get the mixture to the desired consistency. Dough should not be wet or sticky.



Add cheese and pulse until combined.

Pour dough on to plastic wrap and form a round disk. Wrap and refrigerate 30 minutes or overnight. Do-ahead tip: Dough can be frozen up to one month; thaw before using.

Pie Filling

In a large, microwave-safe bowl, combine the apple slices and all pie filling ingredients except flour. Microwave the filling, uncovered, for 5 minutes. This will help soften the apples and get their juices flowing a bit. Stir lightly to combine.

Mix 1/4 cup flour in to the apple and spice mixture.

Streusel topping

In a separate bowl, stir together 1/2 cup sugar and 1/2 cup flour. Using a pastry blender, cut 1 stick of cold butter into the flour mixture until it's crumbly and resembles small pebbles.

To assemble pie:

Preheat oven to 425 degrees with a rack centered in the middle of the oven and the top rack removed to make room for the paper grocery bag. Remove the pie dough from the refrigerator. If the dough has been chilling longer than 30 minutes, let it warm up about 10 minutes and roll into a 12-13 inch circle.

LIVESTOCK WANTED

If you have questions regarding ads in this category, call 404-656-3722.

Any breed horses, goats and mules, will pick-up and pay cash. Wayne Green **Bremen** 770-841-6815

Looking to buy fiber goats. Preferably Angora or Nigora. Laura Podrznik **Arnoldsville** 770-624-4576

LIVESTOCK HANDLING

If you have questions regarding ads in this category, call 404-656-3722.

1998 Sundowner slant load: Ramp, aluminum, gooseneck, large dressing room, air, awning, rear tack. Very good condition; \$10,900. David Crile **Cedar-town** 770-748-7487 678-910-4580

24" bumper pull trailer, 5 new 10 ply tires, brakes, lights, stock or equipment panels are removable, with ramps; \$3500. J C Kittle **Bowdon** 770-258-7173

32' Gooseneck brand cattle trailer, escape door, triple axle, barn kept, new tires, 3 cuts; \$8750. Josh Pennino **Sparta** 706-340-3146

Cattle grooming chute, homemade 1 & 1/4 inch square steel tubing. \$350 cash. Calvin Minchew **Macon** 478-781-0604 478-951-1697

Custom-made small animal transport cages for your truck or utility trailer. See Craigslist for pictures. Phillip Jones **Kite** 478-494-3461 478-494-3144

Powder River head gate; \$350. 450' guard rail; \$1.50 per foot, metal posts for guard rail; \$10 ea. Jim S Hancock **Norman Park** 229-873-6107

Wanted: Bumper pull stock trailer. Emmett Clower **Eatonton** 678-943-3518

W-W one horse, draft size trailer, like new, silver in color. Will consider trading. Call for more details. Ant Griswell **Mitchell** 706-564-6600

RABBITS

If you have questions regarding ads in this category, call 404-656-3722.

7' x30"x18" 3/4 unit cages; \$100. Also feeders, waters, mats, carriers. Katie Hufford **Cleveland** 706-219-4766

Bunnies, small to large, mixed breeds, \$15-\$20 each. Michael Phippen **Newnan** 770-755-8702

Looking to purchase Tan rabbits. Please call anytime. Vladimir Polumin **Duluth** 678-907-5744

New Zealand and Californian meat rabbits. Brown spotted and black combination. Ready in time for Christmas. \$15. Kelly Maxwell **Winder** 404-925-2369

FEED, HAY AND GRAIN

If you have questions regarding ads in this category, call 404-656-3722.

All feed, hay and grain ads must include the variety offered for sale. Ads for mulch hay will not be accepted in this category; they will be published in the Fertilizers & Mulches category.

\$35: 2017 4x5 rd. bales, Fescue/mixed grasses, fertilized, rain free/stored in barn. Robert Greene **Roopville** 770-324-4323

'17 Bermuda 4x5 fertilized, net-wrapped, barn stored, horse quality; \$60. Quantity discounts. Chuck Hecht **Columbus** 706-577-6590

'17 Bermuda, horse quality; \$5.50 at barn. Fescue, horse quality; \$4.50 at barn. Delivery available. Al Guillebeau **Monroe**, 770-267-8929 770-267-8929

'17 Fescue/Rye Mix hay, 6x5 round bales; \$90. Sq. bales; \$6. All barn stored. Delivery available. Quantity discounts available. Jim Robinson **Good Hope** 770-363-6406

'17 Tift 44 Bermuda, weed free, well fertilized, horse quality; \$5.50 bale at barn. Kenneth Owens **Monroe** 770-267-8759

(36) 2017 outside 4x5 rolls. Fescue, Bermuda & Clover mix. \$35 ea./\$30 each for all. Inside hay available. Joe Cronan **Mcdonough** 770-235-3586

(65) 4x5 bales Fescue/Johnson; \$22 ea. R. Lewallen **Home** 706-677-5125

2016/2017 Coastal Bermuda/Alicia, 4x5 rolls, net-wrapped, delivery available; \$30-\$50 ea. David Clemens **Waynesboro** 706-466-2944

2017 horse quality hay: Orchard/Fescue, \$4.50 square bales in barn; \$35 round bales in barn. Lou Beal **Ellijay** 770-344-8527

2017 4'x5' mixed hay. Rain free. Cattle quality. \$25 per roll. Tyler Arnold **Nicholson** 706-296-2779

2017 4x5 fescue/orchard grass net-wrapped rolls \$50; square bales \$5; in barn. R.J. Campbell **Rockmart** 706-936-3294 770-686-9563

2017 4x5 rolls, net-wrapped fescue, rye grass hay fertilized; \$35 per roll. James Sells **Monroe** 770-267-8603

2017 4x5 round bales cattle hay; sprayed, fertilized, in barn; some \$20 and some \$25 per roll. Larry Jarrett **Gillsville** 770-503-5024

2017 4x5, fertilized/limed, weed free, rain free, net wrapped, Coastal/Russell; \$45, Bahia/Bermuda; \$40. Delivery available. James Sibley **Woodbury** 404-434-8081

2017 Alfalfa sq..bales, \$12. Horse quality 4x5 rolls of fescue & orchard, \$45. Sq.bales fescue & orchard, \$5. Dale Hall **Calhoun** 706-506-0351

2017 Alicia/Russell/Coastal Bermuda 4'x5' rolls, horse quality, barn stored, delivery available; \$60/roll. Grady Sapp **Pembroke** 912-429-6194

2017 Bermuda hay: 4x5 rolls, \$50; square bales, \$5; Bermuda mix cow hay, \$4. All hay barn-stored. Steve Matthews **Griffin** 404-247-9789

2017 Bermuda hq. \$5.50; Fescue hq. \$4.50; price @ barn, delivery available. Al Guillebeau **Monroe** 770-267-8929 678-779-1925

2017 Bermuda/Crabgrass mix, square bales; \$5/bale, \$4.50 if you buy 50+. Matthew Kinder **Royston** 706-498-2422

2017 Bermuda/Fescue hay, in barn, square bales; \$4. Round bales 4x5; \$35/\$45. Patrick Broder **Stockbridge** 404-401-6134

2017 Bermuda/Fescue mixed; 4x5 rolls, fertilized, rain free, in barn; \$40 per roll. Outside; \$30 per roll. Mike Keesee **Monroe** 470-899-9668

2017 Coastal Bermuda 4x5 tight bales, netwrapped, horse quality, fertilized, limed, sheltered, rain free; \$60. Grace Brady **Hephzibah** 706-231-0985

2017 Coastal Bermuda hay, horse quality, \$5/bale at barn, delivery available. Glenn Brinson 1800 Corsey Grove Way **Tarrytown** 30470 912-288-5960

2017 Coastal Bermuda hay. 4x5 round and square bales. Larry Morgan **Lizella** 478-972-5977 478-781-1990

2017 Coastal Bermuda, hay, 4X5, net wrapped rolls. Stored in barn. Horse quality. Fred Sackett **Butler** 478-862-5120

2017 Coastal Bermuda, horse quality, fertilized to UGA soil/specs. Barked, square/4x5 round bales, delivery available. Olin Trammell **Forsyth** 478-960-7239 478-994-6463

2017 Coastal mix hay, 4X5 net wrapped roll, dry/in shelter. \$40/roll. Carlin Hodges **Musella** 404-557-8978 478-836-9130

2017 Coastal/Russell Bermuda hay. Squares bales; \$6. 4x5 rounds, net wrapped; \$50. Horse quality, limed/fertilized, delivery available. Michael Dubose **Junction City** 706-366-1665

2017 fertilized Bermuda hay, 900 lb. rolls, \$45 ea. John Johnson **Sparta** 478-456-8376

2017 fertilized Bermuda mix, 4x5 rolls, net wrapped, pick-up in filed; \$40. Dan Harrell 421 Plaza Ave **Eastman** 31023 478-231-8321

2017 Fescue hay in square bales; \$5 each. Jonathan Little **Monroe** 770-314-1278

2017 Fescue hay, \$4.50/ bale at barn. Call after 6 pm. Wade Cown **Monroe** 770-207-6983

2017 Fescue hay. Square; \$5. Round 4x5; \$35. Randall West **Ellijay** 404-358-2833

2017 Fescue/Bermuda mix hay, 4x5 rolls, net wrapped. Glen Whitley **Bethlehem** 770-307-7098

2017 Fescue/Bermuda mix hay; large round bales; fertilized; \$30 per bale. Linda Bullock **Dallas** 770-463-4389

2017 Fescue/Bermuda mix square bales. Fertilized, barn kept. \$5. Delivery available. Kenneth Sargent **Rockmart** 770-490-1227

2017 Fescue/Bermuda mix, cattle hay, 5x5 round bales; \$30. Mulch round bales available. Ryan Baerne **Nicholson** 706-757-2672

2017 Fescue/Bermuda mixed, horse-quality, net-wrapped; \$50-60/inside, \$35-45/outside. Coy Baker **Loganville** 770-466-4609

2017 Fescue/mixed grass hay, very large 4x5 rolls, fertilized, rain free, in barn; \$25 each. Linda Leatherman **Carrollton** 770-834-8333 678-672-0289

2017 Fescue/orchard grass, 4x5 rolls, commercially fertilized/sprayed, rain-free; \$45. Also, second-cutting Fescue/mixed grass: \$35. Delivery available. William Gilstrap **Dahlonega** 706-300-6592

2017 Fescue/Orchard hay: (71) 4x4 bales, sheltered, not horse hay; \$25 per bale. Jon Anderson Po Box 537 **Sautee Nacoochee** 30571 770-402-9867

2017 good quality hay, net wrapped and stored in barn. Leo Perfect **Unadilla** 478-955-2362 478-952-3490

2017 hay, Coastal Bermuda/Bahia mix, 4x5 net-wrapped bales, fertilized; \$35/roll. Phil Amos **Louisville** 706-260-8720

2017 just cut, netted Bermuda & Bahia mixed hay; \$45 a bale. Brad Macdonald **Waverly Hall** 706-582-3530 770-826-8299

2017 mixed Coastal/Bahia: 4x5 rolls net-wrapped, good quality, \$30 per roll in barn; \$20 per roll outside. Jim L. Pierce **Waverly Hall** 404-372-8631

2017 mixed grass cow hay. 4x5 net wrapped rolls. Phillip Britton **Jackson** 404-597-7347

2017 peanut hay, 4x6 rolls; \$40/roll, at barn. Sq. bales; \$5/bale, at barn, delivery available. Gary Brinson 6786 Old Louisville Rd **Tarrytown** 30470 912-286-3191

2017 Peanut hay, high protein, 4x6 rolls, sheltered; \$40. Local delivery available. Mike Holliday **Pitts** 229-938-8656

2017 roll hay, big rolls, call for price. Meriwether County. Patricia Hall **Greenville** 706-637-9915

2017 Russell Bermuda, 4x5 net wrapped rolls. Fertilized/limed; \$45. Andy Dykes **Reynolds** 478-235-0087

2017 Russell hay: \$40 in the field, \$50 at the barn, net-wrapped, 4x5 bales, can deliver. Wayne Smith **Butler** 706-249-2175

2017 Russell, Coastal 4x5 rolls, JD net wrapped, sheltered. Ricky Henry **Kite** none 478-455-4270

2017 square bale Bahia Fescue mix, good quality; \$4.75 per bale. Harry Hughes **Warm Springs** 706-655-2475

2017 square bales Bahia and other mixed grasses, horse/cow quality, barn stored; \$5/bale. Wilson Phelps **Greensboro** 706-347-0492

2017 Tift Bermuda hay square & round horse quality stored in barn. Delivery available. Dick Stratton **Locust Grove** 770-842-9317

2017 yellow feed corn, wheat & oats. Barrel or bulk for food plots or feed. Wayne Montgomery **Reynolds** 478-837-2356

4x5 rolls of hay, stored inside; \$30, outside \$25. 50 inside, 20 outside. Can load. George Eckerd **Lafayette** geck30728@yahoo.com 423-488-0644

4x5, horse quality mix grass; \$40. Cow hay; \$35. Dry stored and twine wrapped. David Smith **Carrollton** 404-323-4622

8 rolls hay, Fescue, 4x4, delivery available, 40/roll. Ronnie Lee **Lithia Springs** 404-580-9042

80 '17 Large Rolls Russell Coastal, wrapped; \$45. Take all for \$40 ea. Tommy Butler **Dexter** tbutler2@earthlink.net 478-875-3560

80 rolls of 4x5.5 mixed hay; \$35 ea. Charles Woodward **Covington** 678-725-2292

Alicia Bermuda/Peanut 600 rolls, 5x4, horse quality, under barn. Delivery available. Walt Dockery **Broxton** 912-359-3153

August 2017 fertilized Bermuda hay; \$40 per roll. Heath Simmons **Twin City** 912-682-8753

Bermuda/Fescue/rye hay mix: heavily fertilized, rain free, horse quality; square, \$7; round, \$50. Large quantity delivery available. Stephen Stana **Carrollton** 770-241-3201

Bermuda: 4x5 rolls, in barn; \$35. Dany Bruce **Rutledge** 706-474-3205

Fescue hay for sale, square bales; \$3.75 each. Roger Hammond **Cumming** 770-887-9158

Fescue mix, horse-quality, \$3.75. Rye grass, horse-quality, \$3.75. Kermit Simmons **Jefferson** 770-867-7550

Hay for sale. Clean, fertilized and limed. Jim Raptis **Lyerly** 770-712-5883

Horse quality Bermuda, stored indoors, we load. \$6.00/bale. Call or stop by. Laurel Whitmire 1040 Astondale Rd **Bishop** 30621 706-207-4336

Large quantity of square Bermuda hay and round haylage. Large quantity round peanut hay. Paul Harris **Screven** 912-294-2470

Mixed hay, 4x5 rolls, horse quality, in barn; \$40. 4x4; \$30. No rain. Charles Chastain **Talking Rock** 706-972-1103 706-253-3983

Net wrapped cow hay, kept in barn; \$40. David Strickland **Barnesville** 770-584-3239

Premium 2017 Tifton 44 Bermuda, horse quality, fertilized, weed/crab-grass free, barn stored; \$75/4x5 roll. Tim Hunter **Conyers** 770-483-8712 770-922-6653

Round bales cow hay, 4x5 rolls, rolled with JD roller; \$45. Glenn Hayes **Oxford** 404-272-7298

Rye Grass or Bermuda square bales; \$6. Horse and cow hay; 4x5 net-wrap rolls. Sam Jackson **Comer** jackson-ranchlivestock@gmail.com 706-215-3988

Tift 44 Bermuda hay. No weeds/fertilized. 4x5 rolls. \$35 each. Pickup at farm. Smaller rolls for less. James Blankenship **Concord** 770-461-9734

Top quality Tift 44/Dallas grass mix; lg. sq.bales, \$7.50; netwrap JD rd. bales, \$50. Ralph W Mills **Gainesville** rmfarm@bellsouth.net 770-536-8438

Wheat straw for sale. \$3.75 a bale. Wade Whitaker **Rutledge** 706-318-4526

Wildlife feed, certified Cook soybean, non-GMO, 39% crude protein, 50 lb. bags; \$20 each. Bryan W Maw **Tifton** 229-382-6832

Feed, Hay and Grain Wanted

200 bu. of snapped ear corn. Yellow, good quality. Larry Callaway **Collins** 912-684-3256

Horse quality hay, rain and weed free. Round and square bales. Harold Reid **Cumming** 770-560-9806

AG SEED FOR SALE

If you have questions regarding this category, call 404-656-3722.

Advertisers must submit a current state laboratory report, fewer than nine months old, for purity, noxious weeds and germination for each seed lot advertised. Ads submitted without this information will not be published. If you are faxing or mailing in an ad, this report needs to be sent along with it. For ads submitted online, the report can be attached using the attachments button. Seed lots must be uniform and cannot exceed 400 50-pound bags. Certain varieties of seed are protected from propagation unless they are grown as a class of certified seed. These include Florida 304, Coker 9152, Coker 9835, 6738 soybean, Haskell, Bennings and others. For questions regarding certified seed, call the Department's Seed Division at 404-656-3635.

Georgia Gore wheat seed; \$9.50 per bag. Many other seed varieties as well. Call or text. Dennis Burroughs **Hull** 706-207-9361

Ghost pepper seeds; 15 seeds for \$1, send SASE. Elwood Holt 102 Hatcher Rd **Warner Robins** 31088 478-396-9841

Red sugar cane for sale, excellent for syrup or seed. 2000 stalks. .50 cents each. Doyle Lamb **Ashburn** 229-567-5102

Ag Plants for Sale

Louisiana Purple Sugar Cane for syrup or seed cane. 2 rows, 200 ft each. \$200. Ollie Lindell **Jesup** 912-427-7187 912-427-7187

Multiplying onions; \$24/gallon. When you call, say you are calling about onions. Eugene White **Lithonia** 770-987-9790

Old fashion quince trees, 3 ft. in pots. Gene Allen Craven **Monticello** 706-468-0809

Sugarcane: Yellow Gal, Red, Green, Improved POJ; \$50/stalk. George Merritt 4855 Calhoun Rd **Unadilla** 31091 229-401-8726

CHECK OUT THE
GEORGIA
grown
STORE
STORE.GEORGIAGROWN.COM
 This T-shirt is 100% cotton
GROWN & SEWN
 in Georgia
 NATURE'S FAVORITE STATE
 GEORGIA COTTON EST. 1793
GEORGIA
grown
BUY, SELL, SUPPORT
GEORGIA GROWN
 georgiagrown.com

Bulletin Calendar

- Dec. 9**
Georgia Grown Christmas Showcase
Shoppes at River Crossing
5080 Riverside Dr.
Macon, Ga. 31210
- Dec. 15**
Feral Swine Workshop and Trapping
Demonstration
Berrien County Agricultural Center
516 County Farm Road
Nashville, Ga.
229.351.4728
www.gacd.us/events
- Jan. 11-14, 2018**
Southeast Regional Fruit and Vegetable
Conference
Savannah International Trade &
Convention Center
1 International Drive
Savannah, Ga. 31421
706.407.2264
registration@gfvga.org
- Jan. 18**
Georgia Peanut Farm Show & Conference
UGA Tifton Campus Conference Center
15 RDC Road
Tifton, Ga. 31794
229.386.3470
www.gapeanuts.com
info@gapeanuts.com
- Jan. 30**
Georgia Ag Forecast
Toombs County Agri-Center
Quint Shrine Road
Lyons, Ga. 30436
706.542.5046
http://www.caes.uga.edu/about/
signature-events/ag-forecast.html
- Jan. 31**
Georgia Cotton Commission 11th Annual
Meeting and UGA Cotton Workshop
UGA Tifton Campus Conference Center
15 RDC Road
Tifton, Ga. 31794
478.988.4235
www.georgiacottoncommission.org
- Feb. 1**
Georgia Ag Forecast
Decatur County Agricultural Center
101 B Ag Lane
Bainbridge, Ga. 39817
706.542.5046
http://www.caes.uga.edu/about/
signature-events/ag-forecast.html
- Feb. 2**
Georgia Ag Forecast
Tifton Campus Conference Center
15 RDC Road
Tifton, Ga. 31794
706.542.5046
http://www.caes.uga.edu/about/
signature-events/ag-forecast.html

- Feb. 5**
Georgia Ag Forecast
Georgia Farm Bureau
1620 Bass Road
Macon, Ga. 31209
706.542.5046
http://www.caes.uga.edu/about/
signature-events/ag-forecast.html
- Feb. 6**
Georgia Ag Forecast
Clarence Brown Conference Center
5450 Georgia Hwy. 20
Cartersville, Ga. 30121
706.542.5046
http://www.caes.uga.edu/about/
signature-events/ag-forecast.html
- Feb. 7**
Georgia Ag Forecast
The Classic Center
300 N. Thomas Street
Athens, Ga. 30601
706.542.5046
http://www.caes.uga.edu/about/
signature-events/ag-forecast.html
- March 2 & 3**
26th Annual Hellebore Days at Piccadilly
Farm
1971 Whipoorwill Road
Bishop, Ga. 30621
706.765.4444
- March 5 & 6**
Georgia Agritourism Association Annual
Conference
Unicoi State Park
1788 Hwy. 356
Helen, Ga. 30545
georgia-agritourism.org
- March 8**
Georgia Grown Feed My School Source
Show
Atlanta State Farmers Market
16 Forest Parkway
Forest Park, Ga. 30297
misty.friedman@agr.georgia.gov
- Have an event to put on our calendar?
Contact Amy Carter at 404.656.3722
or amy.carter@agr.georgia.gov
- We accept calendar submissions for food, craft and agriculture festivals and events. Submissions for festivals that do not specifically promote those industries will not be printed.
- Additional pesticide recertification training notices are available on the department website under the Plant Industry Division tab.

FLOWERS REQUIRING PERMITS

If you have questions regarding this category, call 404-656-3722.
Advertisers selling officially protected plants must have a permit to sell such plants. Ads submitted without this permit will not be published. If you are faxing or mailing in an ad, the permit needs to be sent along with it. For ads submitted online, the permit can be attached using the attachments button. For information on the sale or shipment of protected plants, call the Protected Plant Program at 770-918-6411.

MISCELLANEOUS

If you have questions regarding ads in this category, call 404-656-3722.
(2) 5' x 7' scaffolds with 8" casters, like new; \$250. Phil Adkins **Vienna** 229-273-7691
(2) Hired Hand RollSeal doors: 15' and 16' wide x 9' tall. Some parts missing. Best offer. Jess Hart **Canon** 706-410-6478
1-ton black granite rock, \$150. You load. Mike Williamson **Rex** 770-389-9916
20+ clear glass jars with lids, for candle-making, clean, free, pick-up only. Susan Sweeney **Grantville** 770-583-3297
5 cedar logs, approximately 9 ft. length, various diameters; \$50. George Scoville **Macon** 478-745-2524
6,000 gallon, U.L. 142 diked tank, never used. 2005. Best offer. William Corey **Conyers** 770-483-3638 770-605-6107
Arm & Hammer blacksmith anvil, 80 lbs, in good condition. Gene Kirkpatrick **Chester** 478-230-4418
Craftsman 10" table saw on locking legs. Extensions on both sides of top; \$250. Pictures available. Robert Crittenden **Kennesaw** 770-428-5105
Farm gates, heavy chain mix, winches, straps, Earthway seed planter, metal tray hardware holder. Nell Tortorich **Silver Creek** 706-346-2898
Hardback original blueberry cookbook, 150 blueberry recipes and more; \$15 ea. Call or order online at www.theblueberryfarm.com. Joe Kilpatrick **LaFayette** 423-301-2717
Have all iron parts to build one horse wagon + 4 wheels; \$600. Malcolm C Talley 13 Worsham St Sw **Rome** 30161 706-584-1724
Lennox wood burning stove with glass front and blower. 24" log width. Original price of \$2600. Selling for \$500. William F Chancey **Bishop** 770-363-7756
New 36" Lesco drop spreader, 120 lb capacity, 13" pneumatic tires, originally \$500, will sell for \$315. Call for info. Wayne Whitley **Fitzgerald** 229-457-5986
New Kero-Sun portable heater, refrigerator, moving dollies, metal wood rack, 8' wood step ladder. R.F. Polard 524 Earlvine Way Nw **Kennesaw** 30152 770-427-1201
Quart canning jars; \$5 dozen. Pint canning jars; \$4.50/dozen. Faye Morris **Hartwell** 706-376-8414

Quart jars, 4 cases. \$5 dollars/case.
Annie H Reid **Loganville** 770-466-4868 770-630-4342

Rustic tin, 2' wide x 10' long, 3 ft. wide x 21 ft long rustic barn wood. Cleve Evans 1014 Keith Evans Rd **Dawsonville** 30534 706-265-9704

Sugar Cane. POJ and green. Large quantities available. John Meeks **Richmond Hill** 912-313-7363

Sugarcane syrup, pure premium quality, three 25 ounce bottles shipped FREE; \$42/3. Ben Parrish **Statesboro** ben@benparish.net 912-536-2200

Used tin, 9' and 10'. Leon Ledford **Homer** 706-677-2833

Wood burning heater; \$400. Wood, pick-up and load; \$75. (90) 4x8x16 blocks; 50 cents each. Connie Powell **Monticello** 706-476-0637

Wood burning stove, very heavy, in good condition; \$800. Evelyn S. Sims **Hull** 706-788-2135

Miscellaneous Wanted

Antique double-basin farmhouse kitchen sink. Prefer an apron front and high back. Limited budget. Victoria Eubanks **Commerce** 706-335-0482 770-530-1619

ISO antique seed counter. Chet Johnson **Rebecca** 229-425-7124

Looking for an eleven inch Oxen Yoke in useable condition. Wind Chapman **Dahlonega** 706-202-3630

Looking for cow/horse manure. Free or cheap. Can pick up. Prefer Dawsonville or Jasper area. Thomas Pettigrew **Marble Hill** 470-418-1571

Looking to purchase power poles. Aaron Mcwhorter **Whitesburg** 770-301-9528 770-832-8608

Need cotton quilt scraps for church group quilting. Please mail to listed address. Iva Spears 2325 Highway 337 **Menlo** 30731 706-862-2083

Need damper repaired or replaced in fireplace with gas logs. Bobbie Garrison **Marietta** 404-403-4102

Need six-stages controls. Call after 6 pm. Kermit Tanner **Dawsonville** 706-265-2619

Want 100g syrup kettle in good condition. Will pay reasonable price and pick up. Henry Hine **Conyers** 404-310-6490

Want pressure cooker for canning that holds 5 to 9 quarts. James Bunn 4138 Highway 81 W **Hampton** 30228 770-946-5399

Bees, Honey & Supplies

10-8-5 frame equipment, bees/supplies, nucs, classes, veils, gloves, tools, honey, swarms. Buford, Flowery Branch, Oakwood, Suwanee, Winder. Harold Lanier **Buford** harold@lanier-beebarn.com 678-471-7758

10-frame bee hive; \$85. 5-frame bee hive NUCs; \$65. Also make inner covers/supers/and top bar bee hive. Eliseo Delia **Mineral Bluff** 706-492-5119

2018 NUCs and packages, limited quantities, reserve now; \$170/NUCs, \$115/packages. Daniel Scales **Tyrone** danssweetbees@gmail.com 678-232-4793

Albany/SW Georgia complete bee removal; also hornets, wasps, yellow jackets. Licensed and insured. Dale Richter **Leesburg** 229-886-7663

Bee removal, work guaranteed, Metro Atlanta and West Georgia areas. W.O. Canady **Villa Rica** 770-942-3887

Italian bees, NE Georgia, 3lb. packages, 2018 spring queens. Pick-up only, order online. Slade Jarrett **Baldwin** 706-677-2854

NUCs, 5 frame high quality NUCS for sale. Call or check out my website www.mountainmanbees.com. Caleb Lachmann **Blue Ridge** caleblachmann@gmail.com 706-851-8639

Pure raw honey from Kennesaw and Sourwood areas; honey comb from Sourwood areas. Shakeel Nasir **Kennesaw** www.assalap.com 678-468-6238

Pure unprocessed wildflower honey. 24 oz jar; \$8.50, 5 gal; \$180. Byron Vaughan **Monroe** 770-207-1484

Wanted bee equipment. Will pick up swarms for free; remove bees from structure for a fee. Leonard Day **Macon** 478-719-5588

Things To Eat

1 quart of shelled black walnuts; \$25 plus shipping. Herman Robinson **Bremen** 678-821-3466 770-294-9600

2017 black walnuts, shelled, large, extra clean; \$23/quart, postage paid. Hoyt Payne **Mc Cayville** 706-492-7781

2017 Desirable Pecans; \$11/lb. + postage. Will crack, shell, separate your pecans, \$50-cents/lb. Russell Eaton **Stockbridge** 770-506-2727

2017 frozen blackberries; \$6.00/lb. One-day UPS delivery in styrofoam box. Member of Georgia Grown. Davis Yaun **Soperton** aikenyau@gmail.com 912-399-1988

2017 pecans, in the shell; \$5/lb. + shipping. Charles T Sawyer **Mount Airy** 706-768-4776

All natural beef, also feed grain. Sides or whole. Taking orders for late fall. \$3.50/lb. Hanging weight and custom processing. Roy Lee Strickland **Villa Rica** 770-459-5997

All natural black Angus beef; hormone/antibiotic/steroid free; grass fed/grain finished. Sold by quarter/half/whole. David Sharpton **Commerce** 706-367-0876

Black walnut in the shell; \$5/pound. Randy Weaver **Ellijay** 706-889-7994

Black walnuts, hulled; \$5/ lb. John Payne 4413 Pinewood Ct. **Lilburn** 30047 678-200-7021

Brown eggs from free range Rhode Island Reds; \$4/dozen. Call for availability. Mary Robbins **Powder Springs** robbinsltd@hotmail.com 770-943-1007

Farm fresh chicken + duck eggs, delivery available. \$5/dozen, \$10/2.5 dozen(chicken), \$8/dozen(duck). Raul Ramos **Mcdonough** 404-462-4444

For sale: 2017 pecan halves, \$8/lb. plus shipping. Jesse Arnett **Tifton** 229-382-6517

Georgia Red sweet potatoes for sale. Grown in my garden. No chemicals. Rosanna Auken 43 Daisy Ln **Wrights-ville** 31096 478-864-3092

Grassfed beef, place order now for 1/4, 1/2 or whole calf, custom processing. JoGlo Farms. Gloria Malcom **Social Circle** 770-464-4303

Pecans: cracked nuts & shelled nuts. Call for information. Raymond Gilbert **Madison** 706-342-3623

FLOWERS AND ORNAMENTALS FOR SALE

If you have questions about this category, call 404-656-3722.
100 Eng. Boxwoods in pots, 2 years. Good for small Boxwood garden; \$100. John W Long **Decatur** 404-285-5591
4" perennials, 350 varieties; \$1.50 ea. including helleborus. 1 gal. grafted Japanese Maples \$20-25, display garden. Selah Ahlstrom **Jackson** 770-775-4967
Blackberry Lily; \$3/10 seeds + SASE. D. Miltimore 1766 Pleasant Hill Rd NE **Ranger** 30734
Cleome, money plant, touch-me-not, four-o'clock, Mexican sunflower, Tiger lily; \$1/each + large SASE. B.L. Savage **Gainesville** 770-534-7856
Cosmo seeds, 6' tall is not unusual; \$1/60 seeds + SASE. Ira Bray 70 Wilkes Ct **Newnan** 30263
Healthy, full, lush-growth August Beauty Gardenia plants in two-gallon buckets: \$15. John T. Anding **Roswell** 770-552-1405
Hummingbird vine seeds, Red trumpet flowers: \$5/tsp, SASE. Lawrence Vickers 756 Corinth Poseyville Rd **Bremen** 30110 770-490-1904

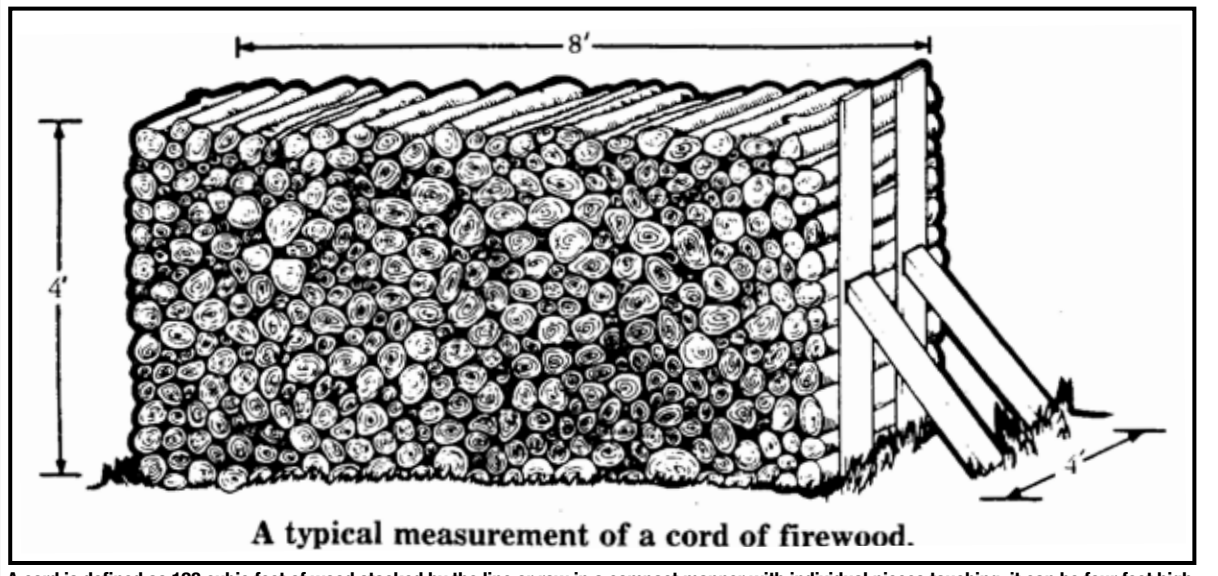
Mondo grass, Variegated Liriope, Nandina bushes, Redbud and Crepe Myrtle trees, 1 and 3 gallon pots. Priced cheap. Katherine Patman **Athens** 706-549-4487

Privacy Trees: Murray, Cypress, Green Giant, 3 gallon; \$7. Kelly Wilson **Griffin** 770-365-1530
Seed: Poppies, Larkspur, Foxglove, Cosmos, Coreopsis; \$2 half-tsp. Maypop, Cypress vine; \$1/30 seeds. SASE. Sara O'shields PO Box 185 **Tate** 30177 770-735-3657

Seeds: Devil's trumpet, mullein pink/touch-me-nots, morning glory, hibiscus, four-o'clocks, money plant, \$1 cash/teaspoon +SASE; mole bean, other. E. Beach 2966 Cardinal Lake Cir **Duluth** 30096 770-476-1163

Sunflower, tall four o'clocks, rose of Sharon; \$2/Tbsp, SASE. M. Pursley 253 Ryan Rd **Winder** 30680 678-979-0057

Flowers and Ornaments Wanted
Back yard pond plants for a gold fish pond. Ann English **Cochran** 478-934-4260
Looking for Boxwoods: +/- 30" English or American, will harvest, preferably from established landscape demo or redesign. Halley Manning **Atlanta** 770-789-4440



A cord is defined as 128 cubic feet of wood stacked by the line or row in a compact manner with individual pieces touching; it can be four feet high, four feet wide (deep), and eight feet long, or any combination of these measurements (height, width and length) that yields 128 cubic feet.

Marview Farms provides grassed and pastured beef, pork, lamb and goat. Free-range eggs and chickens. MarviewFarms.com Fernando Mendez **Arabi** 229-401-8722

On the hoof, Wagyu/Angus beef, available January 2018. Large Black hog sausage, ready now. James Whitaker **Warner Robins** 478-929-2000

Pastured pork. Place order for 1/2 or whole hogs. Select cuts and custom processing available. Cheryl Clevenger **Locust Grove** 30248 clevengerfarms@bellsouth.net 404-376-0477

Sugarcane syrup, no additives, no preservatives. \$9/25.4 oz \$6/12.7 oz. Organic Sugarcane syrup \$10/12.7 oz. Mickey Morris **Odum** 912-586-2241

Sunflower heats; \$.50 ea. You cut. Danny Fauset **Dawsonville** 706-265-8432

Fish & Supplies

Advertisers selling sterile triploid grass carp must submit a current Wild Animal License from the Georgia Department of Natural Resources. Ads submitted without this license will not be published. If you are faxing or mailing in an ad, the license needs to be sent along with it. For ads submitted online, the license can be attached using the attachments button. For license information, call 770-761-3044.

1”-5” bluegill, F-1 largemouth yearling bass, shiners, pond liming, vegetation control, bug light, consultation services. Ethan Edge **Lumber City** 912-602-1310

1-2 inches and up. Bluegill, shellcracker (rebear) and redbreast, 3-5, 5-7 inch catfish, grass carp, threadfin shad. Brian Simmons **Hawkinsville** 478-892-3144

10”-12” sterile grass carp, bluegill, shellcracker, shad, catfish, shiners, minnows, aeration, fish structure, feeders. Keith Edge **Soperton** 478-697-8994

1st Class Big Reds, \$35/lb; Red Wigglers \$18/lb; Casting \$.070, plus shipping. Lew Bush **Byron** bigreds1@cox.net 478-955-4780

A-I quality farm-grown channel catfish fingerlings; graded, priced by size, accurate weights and counts, guaranteed live and healthy. J.F. Gilbert **Thomas-ton** 770-468-0725 706-648-2062

All sizes bass, bluegill, channel catfish, threadfin, gizzard shad, shellcracker, and more. Free delivery or pickup. Danny Austin **Roberta** 478-836-4938

Rainbow Trout: DNR certified. Quality stockers, hatched on our farm. Various sizes with delivery/pick-up available. David Cantrell **Ellijay** 706-273-6199

Fertilizers & Mulches

Free compost. Horse manure. Jerry Riles **Douglasville** 770-337-1516

Fresh, clean red pine straw installed & cleaned. We also have long needle. \$4/bale. Travis Golden **Conyers** 404-710-9884

Longleaf pine straw, delivery and installation or semi-trailer dropped. Joshua Bulloch **Manchester** 404-925-1076

Mulch hay, 4x5 round bales. No weeds, fertilized. Fescue/Bermuda, some Johnson grass; \$20. Lori Catron **Bremen** 404-213-8594 404-213-8594

Mulch hay, 4x6 round bales; \$20. Danny Bentley **Thomaston** 706-647-7089

Pure Worm Castings, 100% rich organic fertilizer. Great for gardens & plants; \$10/5g bucket. \$35/25g tote. Eric Howell **Roberta** 478-319-6183

Round rolls of wheat straw; \$40 a roll. Jane Shaw 3424 Burnett Rd **Byron** 31008 404-227-0925

Poultry Litter/Compost

Bulk chicken litter delivered by truck-load, 25 ton+ anywhere in Georgia. Call for price. Jerald Sargent **Dawsonville** 678-245-1700

Oddities

Gourds, many varieties. Martin gourds fixed and ready to hang. At farm or shipped to you. Charles Lang **Cordele** 229-406-5039

Lucky Buckeyes; \$4.25/doz. Planting Buckeyes; \$5.25/dozen. Instructions included, please include postage. Jules Simmons **Stone Mountain** 828-226-4700

The Gourd Pile: come shop or we ship. Pamela Morrison 874 Morrison Road **Barney** 31625 407-538-4700 229-775-2123

Garden Space

If you have questions regarding ads in this category, call 404-656-3722.

Notices

Out-Of-State Wanted

John Deere 2240 tractor wanted in good condition, preferably a late model. Tim Bagwell **Brundidge** AL bc-sllc3125@gmail.com 334-735-2464

Want to lease 500-1000 acres for still deer hunting in Southwest Georgia. Good stewards. Ben Highsmith **Saint Johns** FL 904-424-3399

Firewood

Firewood must be cut from the advertiser's personal property. Ads for firewood must use the cord when specifying the amount of firewood for sale.

All hardwood. 20” lengths. Easy access for pickup. Local delivery available (extra). \$150/cord. Dennis Irwin **Canton** wdennisirwin@aol.com 770-720-1263

Approximately 2 cords of split red and white oak seasoned firewood. Larry Houston **Covington** 770-235-3082 770-235-3782

Firewood for sale. Lois Knight **Rutledge** 706-717-0607

Hickory firewood; \$150/half-cord. J.T. Austin **Douglasville** 770-652-3383

Oak firewood, pickup truck load; \$100. Delivery extra. Pecan, hickory, cherry for cooking. Larry Moore **Newnan** 678-278-5709

Seasoned hardwood, 1/2 cord; \$80. Cord; \$160. Will deliver for additional fee. Edward Akin **Griffin** 678-378-9175

Seasoned Oak Firewood; \$135 a cord. \$70 for 1/2 cord. Local delivery free. Harold Hook **Mount Airy** 706-778-9650

Seasoned oak firewood; \$135/cord, \$75/half cord. Free local delivery. Harold Hook **Mount Airy** 678-641-4976

Seasoned oak split, \$170 cord. \$95/half-cord. Truck delivery available. Jerry Tucker **Mcdonough** 770-722-1492

Seasoned oak; \$100/half cord or \$200/cord. Hickory/pecan BBQ wood; \$75/quarter cord. Delivery available. Bob Lewis **Fayetteville** 30215 770-461-4083

Seasoned split oak firewood; \$70/half cord. Michael Stone **Mcdonough** 770-957-8613

Smokerwoods/Firewood: Pickup truck loads for \$85. Year round service. Delivery available. Tommy Phillips **Jefferson** 706-362-4874

Split and seasoned oak hardwood, 18”-20”L, free local delivery; \$85/half-cord. Corey Campbell **Decatur** 404-241-0192

Timber

Timber must be individually owned and produced by the advertiser on his personal property. No companies or businesses are allowed to advertise timberland in this category. Timberland advertised must be at least one acre. Timber wanted ads will not be published.

Oak, pine, cedar, sweetgum trees on 4 acres. You cut down and remove. A. Kmetz **Hampton** 770-897-0423

Pine timber on 18 acres; \$6000 cash. Anson Edwards 225 Patterson Rd **Talking Rock** 30175 706-334-2968

W-Oak 30” x 50” clear on ground, saw timber. Have back hoe, you haul. Various limbs for firewood. Thomas Burch **Snellville** 404-274-0102

Christmas Trees

CORRECTIONS

2017 Russell, Coastal 4x5 rolls, JD net wrapped, sheltered. Ricky Henry **Kite** none 478-455-4270

Handicrafts

If you have questions regarding ads in this category, call 404-656-3722.

Handicraft ads are limited to 30 words.

AAA Homemade Quilts: custom, pre-made, all sizes; Quilt tops, T-shirt quilts, quilts for your beach house, queen and twin; pot holders, microwave cozies. Many colors/patterns. \$6-\$450. Doris Brown **Mcdonough** fdbrownj@charter.net 770-898-8701

Adult bibs, walker bags, sunbonnets, aprons full and half, some Christmas, tote bags. \$7 each. 3 for \$15. Includes postage. Margaret Hottle 4220 Union Rd Sw **Atlanta** 30349 404-344-0568

All types of chair caning, refinishing and repairs. James Lewis 1404 Kenwood Dr **Perry** 31069 478-987-4243

Approx. 300 pieces needlework, yarn, embroidering thread, needles, frames, etc. Call for more info. Jessie Pierce **Statham** 770-725-1950

Audubon-approved cedar birdhouses, feeders, and carpenter bee traps. Specializing in Bluebird nest boxes, handcrafted with repurposed materials. George Burkett **Mableton** 770-401-0315

Bluebird houses: Clean out lid, cedar; \$15/ea. Rabbit box traps, old school, weathered wood; \$20. \$10 shipping, up to 2. Donald Allen 3647 Spain Rd **Snellville** 30039 404-578-7758

Chair and rocker caning of all kinds, also wicker and rattan repair. 36 years of experience. Duke Dufresne **Statham** 770-725-2554

Chair caning and minor wicker repair. Laced, pressed, rush, binder, flat reeds, hickory, Danish cord. 40 years of experience. Susan Leggett **Clarks-ville** a2tun@aol.com 706-754-3843

Chair caning and wicker restoration done, including laced and pressed cane, rush, split oak, binder cane, sea-grass, Shaker tape, rattan, all types of caning. High quality work. Dotty McDaniel **Cumming** 770-887-8518

Deer antler knives. Made with crown portion of antler. Three sizes. Can be personalized. Order now for Christmas. Darrel Youngblood **Millwood** 912-282-0167

Duster refills, will fit several things including Swiffer handles. Use, machine wash/dry over and over. A great money saver. Roberta Watts **Monroe** 770-464-1979

Memory Bears made out of loved ones' clothing. Sherry Mcdaniel **Bu-ford** 770-945-4869 770-366-1306

Quilt frames and fabric for quilts, some 1/4 yard, more are less. R A Morgan 300 Turner Rd **Jasper** 30143 706-301-9300

2018 Market Bulletin Advertising Deadlines

Issue Date	Special Ad Categories	Deadline Ads due by noon this day
Jan. 3, 2018	Farm Services; Farm Services Wanted	Dec. 20, 2017
Jan. 17	Handicrafts	Jan. 3, 2018
Jan. 31	Farmland Rent/Lease; Farmland Rent/Lease Wanted	Jan. 17
Feb. 14	Farm Services; Farm Services Wanted; Handicrafts	Jan. 31
Feb. 28	Farmland Rent/Lease; Farmland Rent/Lease Wanted	Feb. 14
March 14	Farm Services; Farm Services Wanted; Handicrafts Spring Farmland for Sale	Feb. 28
March 28	Farmland Rent/Lease; Farmland Rent/Lease Wanted	March 14
April 11	Farm Services; Farm Services Wanted; Handicrafts	March 28
April 25	Farmland Rent/Lease; Farmland Rent/Lease Wanted	April 11
May 9	Farm Services; Farm Services Wanted; Handicrafts	April 25
May 23	Farmland Rent/Lease; Farmland Rent/Lease Wanted	May 9
June 6	Farm Services; Farm Services Wanted; Handicrafts	May 23
June 20	Farmland Rent/Lease; Farmland Rent/Lease Wanted	June 6
July 4	Farm Services; Farm Services Wanted; Handicrafts	June 20
July 18	Farmland Rent/Lease; Farmland Rent/Lease Wanted	July 5
Aug. 1	Farm Services; Farm Services Wanted	July 18
Aug. 15	Handicrafts	Aug. 1
Aug. 29	Farmland Rent/Lease; Farmland Rent/Lease Wanted	Aug. 15
Sept. 12	Farm Services; Farm Services Wanted; Handicrafts Fall Farmland for Sale	Aug. 29
Sept. 26	Farmland Rent/Lease; Farmland Rent/Lease Wanted	Sept. 12
Oct. 10	Farm Services; Farm Services Wanted; Handicrafts	Sept. 26
Oct. 24	Farmland Rent/Lease; Farmland Rent/Lease Wanted	Oct. 10
Nov. 7	Farm Services; Farm Services Wanted; Handicrafts	Oct. 24
Nov. 21	Farmland Rent/Lease; Farmland Rent/Lease Wanted	Nov. 7
Dec. 5	Farm Services; Farm Services Wanted; Handicrafts	Nov. 21
Dec. 19	Farmland Rent/Lease; Farmland Rent/Lease Wanted	Dec. 5
Jan. 2, 2019	Farm Services; Farm Services Wanted	Dec. 19, 2018
Jan. 16	Handicrafts	Jan. 2, 2019
Jan. 30	Farmland Rent/Lease; Farmland Rent Lease Wanted	Jan. 16

Retired Ag leaders volunteer to mentor young farmers, entrepreneurs

By Leslie Davis
leslie.davis@agr.georgia.gov

As young professionals and farmers break into the agricultural industry for the first time or plan to expand existing companies, many struggle with unanswered questions about what business practices will best suit their endeavors.

Since its start in 1964, Service Core of Retired Executives has been helping entrepreneurs and small businesses from across the country through personal mentorship with business experts. With more than 10,000 volunteers from 300 chapters nationwide, SCORE aims to reach 1 million clients nationally by 2020.

Because of the program's success in other industries such as technology and banking, business leaders in Moultrie formed a SCORE affiliate to serve young farmers and others looking for opportunities in Georgia's agriculture industry.

"The reason we started SCORE here was because the development authority said, 'Hey, we need some help with our small businesses.

We are chasing the bigger businesses, more jobs, but the bread and butter of every community is the small business community, and they have nobody to go to if they have problems,'" said Bob Montgomery, co-chair of the Moultrie SCORE. "So, that's what SCORE is about."

Headed up by Montgomery and Lisa Zeanah, Moultrie's SCORE held its first agriculture-focused meeting on Nov. 10. The Moultrie area's best and brightest agriculture industry professionals gathered together in an effort to brainstorm ways to make this branch of the SCORE program as successful as possible.

Industry professionals from institutions including Abraham Baldwin Agricultural College, the University of Georgia, Fort Valley State University and the Georgia Farm Bureau Young Farmer Program suggested that the best way to reach young and upcoming farmers would be through outreach in agricultural colleges throughout the state.

"The students are the future of agriculture. As mentors, our goal is to start these students off on the right foot, helping them to be suc-

cessful in the long run. That is the underlying mission of the SCORE program. By having these mentors available, students are able to learn from them and hopefully avoid making some preventable mistakes," said Harry Thompson, former executive secretary of the Georgia Young Farmers Program.

Along with young farmers, the SCORE Moultrie chapter also hopes to help those veterans and niche "artisan" product producers attempting to break into to the Ag industry by building connections through the agricultural mentorship program.

"We want to find the best way to get ourselves known to the Ag community so they know what we do," said Montgomery. "Our target market based on the memorandum of understanding and the thought behind this whole process would be young farmers that may be getting into the business new, or may be taking over the existing business."

The SCORE Moultrie chapter is seeking volunteers interested in participating as mentors or mentees. If you or somebody you know is interested in learning more about SCORE Moultrie's agricultural division, contact Bob



Leslie Davis/GDA

SCORE Moultrie co-chair Bob Montgomery and Rodney Brooks of the USDA.

Montgomery at scoremoultrie@gmail.com or 229.985.2131, or Rodney Brooks at rodney.brooks@ga.usda.gov. Learn more about SCORE online at <https://newfarmers.usda.gov/mentorship>.

FARMERS UNDER 40: Sam Watson

Farm: Chill C Farms
Hometown: Moultrie
Age: 39

Q: How did you get your start farming?

A: Well, I grew up on a farm and spent most of my childhood around livestock, but the switch to vegetable production was not something I was looking for – it kind of just happened. I usually tell people that most folks have hobbies. Some people play golf, some go fishing ... I had two buddies, and we decided to plant 20 acres of crookneck squash for our hobby. One of us had a piece of land, one had an old sprayer, and one had to get it picked, packed and sold. We made a little money and now 10 years later we own some land, have several sprayers, still pick it, pack it and sell it but on a much larger scale.

Q: What kinds of farming do you primarily spend your time doing?

A: I am the managing partner of Chill C Farms, a 500-acre vegetable operation that grows bell pepper, squash, cabbage, cucumbers, tomatoes and eggplants. I also have a small cow-calf operation that I operate with my Dad.

Q: How do you think being a younger

farmer affects you and your business? Do you think this is a positive aspect or does it pose any challenges for you?

A: Being a young farmer comes with advantages and disadvantages. When you're young and just starting out it's hard to obtain the necessary capital for operating expenses and to buy land and equipment. On the other hand, technology is continuing to make agriculture more efficient, and I think younger farmers are more likely to adapt and try new technologies. We tend to be more comfortable with computers, and that will be key to successfully operating a farming enterprise in the future.

Q: What is the best piece of advice someone has given you?

A: Farming is tough and at the end of the day, you can do everything right and still have a tough season. There are so many factors that are beyond our control. You need to have faith to know that God is in control, not you.

Q: Being a farmer while also being a member of the Georgia House of Representatives is certainly time-consuming. How do you manage your schedule?

A: It is tough at times, but growing up



Provided photo

Sam Watson in a field of cabbage at Chill C Farms.

on a farm you learn hard work, you learn responsibility, and you learn to do the duty that lies nearest. My family is very supportive of farming and my State Representative work, and knowing that they understand the workload is comforting. My wife helps me. We are blessed with two sets of grandparents that always offer assistance, and my Dad helps me a great deal with the farm. As my girls get older they are stepping up, too. Instead of just going along for the ride they are learning to work with some of the equipment and take on additional responsibility themselves. I also have several committed employees that are dependable and really go the extra mile to

make sure everything is taken care of when I have to be away.

Q: Why did you feel that it was important to become a member of the House?

A: I had the opportunity to participate in several leadership programs and became increasingly aware of the need for strong voices to support and defend agriculture and rural Georgia. As our state continues to grow, much of the population is moving to more urban areas and we need to make sure that rural Georgia – the foundation of our state – remains strong.

Q: What are the challenges you see many Georgia farmers facing that you hope to address legislatively?

A: I serve as chairman of the Rural Caucus and as vice-chair of the Rural Development Council that is currently traveling our state and working to find ways to stop or slow down the dissolving of rural Georgia. We need people to continue to want to live, work and raise a family in rural Georgia. The decline of rural communities hurts farmers and everyone else that is involved in agribusiness. Our council hopes to help solve many of the issues crippling the rural parts of our State.

You've received a one year subscription to the
FARMERS AND CONSUMERS MARKET BULLETIN

Merry Christmas

We hope you enjoy your gift!

Cut here and give the attached card to a loved one!

Give the gift of a year's subscription to the Farmers and Consumer's Market Bulletin!

Fill out the slip below with the recipient's information and mail a check or money order for \$10.

Recipient Name _____

Address _____

City _____ State _____ Zip _____

Email address _____

Phone number _____

You can also give the gift of the Market Bulletin by subscribing online at agr.georgia.gov/market-bulletin.aspx or calling **800-282-5852**

Please make checks payable to the Georgia Department of Agriculture and mail to Georgia Department of Agriculture, Attn: Market Bulletin, P.O. Box 742510, Atlanta, GA 30374.