

FARMERS AND CONSUMERS

MARKET BULLETIN

GEORGIA DEPARTMENT OF AGRICULTURE • GARY W. BLACK, COMMISSIONER • WEDNESDAY, JANUARY 30, 2019 • VOL. 102, NO. 3 • © COPYRIGHT 2019

SUPER BOWL 53: GDA works to ensure food safety at event

By Kendall McWilliams

Atlanta's Mercedes-Benz Stadium will host Super Bowl 53 on Feb. 3. In preparation for the crowd-drawing event, the Georgia Department of Agriculture's Rapid Response Team has led emergency preparedness efforts centered around food defense and response coordination.

For more than a year, GDA Inspector General Gary Kelley, Director of Emergency Management Venessa Sims and other members of GDA's Emergency Management Team have organized table-top exercises and food defense coordination meetings with state- and federal-level emergency managers and food industry stakeholders. The team of professionals will heed the warning signs of credible threats as one of the nation's most-watched sporting events unfolds in Atlanta.

"There currently are no known threats to the Super Bowl," said Kelley, "but would we be negligent if we didn't do anything to prepare for a credible threat? The answer is yes."

The objective of each table-top exercise has been to address issues that could arise during a real-time food defense event. Local, state

and federal agencies play an important role in emergency response, and the proper preparation will ensure that the chain of communication is set in place should an event transpire.

With a mission of prevention, protection and response, the agencies and industry stakeholders have talked through fictitious scenarios. By talking through these scenarios step-by-step, the team has defined a standard protocol for intelligence and information sharing, operational coordination, public information and external messaging, and search and detection.

"The goal is to ensure the integrity of the food supply and throw out a deterrent factor to make sure an event is less likely to happen," said Lamar McEwen, manager of the State Operations Center for the Georgia Emergency Management and Homeland Security Agency.

Emergency management officials are prepared to negate any attempts to compromise the food being served at Mercedes-Benz stadium and at game-day events throughout the city. According to GEMA officials, the State Operations Center will be manned during Super Bowl weekend.

"We are going to open the SOC to host federal teams and bring in the key emergency support functions," said McEwen. "We normally don't open unless there is a disaster we are working, but we will be there for consequence management."

Prior to the event, the GDA's Laboratory Division will be testing food samples from vendors that are set to serve concessions at the Super Bowl.

According to Dana Shell, manager of GDA Food Safety Labs, testing samples will be "business as usual," looking for traces of E. Coli, Salmonella and other bacterial contaminations. The GDA laboratories in Tifton will also test samples for traces of chemical residue.

According to Kelley, preparation is key when it comes to ensuring the safety and security of events like the Super Bowl.

"The reason we conduct these exercises is so we can air things out and talk about things prior to an event," he said. "We never want the first time we encounter a question to be during an event. That's why we do table-top exercises, and that's why we prepare in advance."



-Kendall McWilliams is the former Associate Editor of the Farmers and Consumers Market Bulletin.

Notice

Ads for the Feb. 27 issue — including Farmland for Rent/Lease and Wanted — are due by noon, Feb. 13.

Southeast Regional Fruit and Vegetable Conference draws 3,300 growers, 280 exhibitors

By Amy Carter
amy.carter@agr.georgia.gov

SAVANNAH — More than 3,000 fruit and vegetable growers and 280 exhibitors from throughout the Southeast as well as California, Michigan

and Pennsylvania attended the annual Southeast Regional Fruit and Vegetable Conference Jan. 10-13.

"This is a grower show," said Charles Hall, executive director of the Georgia Fruit and Vegetable Growers Association, which cohosts the show with the South Carolina Peach Council.

"Growers come to learn more from the education sessions, to learn more about their production practices and, from the trade show standpoint, to learn more about what new equipment, what new products, what new services would help them with fruit and vegetable production."

Big Business

The conference has proven so popular through the years that the association maintains a waiting list of vendors seeking space on the 85,000-square-foot exhibit floor at the Savannah International Trade and Convention Center on Hutchinson Island. Hall said 80 vendors were on the waiting list this year.

Among the companies exhibiting was Mattracks of Karlstad, Minnesota. The company offers rubber track systems to retrofit nearly every type of farm machinery, from tractors and sprayers to pick-up trucks of various sizes, ATVs/UTVs and blueberry and cotton pickers.

"We build for mud, sand, snow, rocky terrain," said Paul Brazier, who represented the company in Savannah.

The track system replaces conventional tires to give heavy machinery a bigger footprint that navigates rough terrain smoothly and causes less ground compaction.

On the business side of farming, Richard Bertrand with Harvest Scale Systems of Orlando offered growers a look at his company's harvest scale system, a self-contained unit mounted in a Pelican hard case that manages employee payroll and field traceability data such as palletization and field variety from the picking level to the packing house. The unit's scale weighs the fruit picked by each employee and credits them for payroll



Charles Hall, director of the Georgia Fruit and Vegetable Growers Association, with Georgia Watermelon Queen Savannah Hartley.

Published by the Ga. Department of Agriculture
Gary W. Black, Commissioner

Please deliver this paid subscription to:

See **CONFERENCE**, page 12

Advertise in the *Market Bulletin*

Classified advertisements in the Market Bulletin are free to subscribers and limited to one ad per issue per subscriber number. Out-of-state subscribers may only publish ads in the Out-of-State Wanted category. Advertisements from businesses, corporations, dealerships, real estate agents or other commercial entities are not permitted. Advertising is limited to farm-related items.

Advertisers and buyers are advised to be aware of state and federal laws governing the sale and transfer of live animals. The Georgia Department of Agriculture does not assume responsibility for transactions initiated through the Market Bulletin but will use every effort to prevent fraud. Advertisers are expected to fulfill the terms of their offers. Failure to do so through either negligence or intention may require the Market Bulletin to refuse future ads.

Market Bulletin staff reserves the right to designate ad length and to edit for spelling, grammar and word count. Ads run a maximum of two consecutive issues if the category allows. A new ad must be submitted to run longer than two consecutive issues.

Ads in regularly published categories are limited to 20 words including name, address, email address and phone number. The following ad categories are published periodically and allow up to 30 words: Farm Services; Farm Services Wanted; Farmland Rent/Lease; Farmland Rent/Lease Wanted; Farmland for Sale; Handicrafts. Ads for Farmland for Sale are published twice per year, in the spring and the fall.

There are three ways to submit your ad.

- Fax:** 404.463.4389
- Mail:** Georgia Department of Agriculture
Attn: Market Bulletin
19 Martin Luther King Jr. Drive SW
Atlanta, GA 30334-4250
- Online:** www.agr.georgia.gov

Please include your subscription number on all mailed and faxed correspondence.

Questions about advertising? Call 404.656.3722

Subscribe to the *Market Bulletin*

A one-year subscription to the Market Bulletin is \$10 and includes both print and online access.

To subscribe or renew online visit agr.georgia.gov to pay via electronic check, Visa or MasterCard.

To subscribe by phone, renew your subscription, update your address or report delivery problems call 404.586.1190 or 800.282.5852.

To subscribe by mail send a check or money order payable to the Georgia Department of Agriculture along with your name, complete mailing address, email address and phone number to:

Georgia Department of Agriculture
Attn: Market Bulletin
P.O. Box 742510
Atlanta, GA 30374

Multi-year subscriptions may be purchased by mail.

Call the Department of Agriculture

404.656.3600 | 800.282.5852

AI Hotline 855.491.1432

Georgia Grown Food Safety
404.656.3680 404.656.3627

GATE Plant Protection
855.327.6829 404.463.8617

Equine Health Licensing
404.656.3713 855.424.5423

Animal Protection State Veterinarian
404.656.4914 404.656.3671

Fuel and Measures Market Bulletin
404.656.3605 404.656.3722

Georgia Department of Law Consumer Protection Unit
404.651.8600 | 1.800.869.1123

FARMLAND RENT/LEASE

If you have questions regarding ads in this category, call 404-656-3722.

The Farmland for Rent/Lease category is published the last issue of each month. Please adhere to the following guidelines when submitting an ad for Farmland for Rent/Lease or Rent/Lease Wanted * When submitting ad, please designate it for the Farmland for Rent/Lease category. Notices to buy or sell farmland are published only in the special fall or spring farmland editions * Ads must not exceed 30 words.

Hunting land for lease, next season; Laurens County. E L Hendricks **Dublin** 478-676-3513

Farmland Rent/Lease Wanted

50 or so acres wanted for hunting, 3-4 people, Pike, Meriwether, Spalding or Upson. Will help with bushhogging or whatever is needed. No drinkers. Bob Barringer **Williamson** 678-544-9338

Christian family looking for 2019 and further hunting lease, 100-1,000 acres, Central to S.Georgia. Quality management-minded. Jimmy **Adairsville** 678-918-0424

Christian, alcohol-free family men seek hunting lease 2019/2020. All counties east of Atlanta. Metro considered. Jonathan Holbrook **Cumming** jono1028@yahoo.com 404-775-8417

Need 50+ acres pasture to rent for cattle in/or near Milan. Willing to sign lease. Jared Long **Milan** 678-416-3742

Registered forester looking for hunting land in exchange for discounted forestry services. Lee Lewis **Williamson** 678-449-9484

Want to lease 50 to 100 acres for hunting the 2019 season. No hunting club, only my grandson and I will be hunting. Walton and surrounding counties. Dany Bryan **Monroe** 404-520-9359



ALWAYS IN SEASON
georgiagrown.com

FARM EMPLOYMENT

If you have questions regarding ads in this category, call 404-656-3722.

Only farm work or farm help wanted advertisements allowed. No commercial, industrial or domestic employment permitted.

Looking for local farm work. Tractor experience and carpenter. Years of experience. Michael Martin **The Rock** 678-416-1424

Seeking experienced stable hand to work full day Saturdays and/or 2 week-day mornings. Annetta Coleman **Suches** 678-936-8087

Working farm operator/manager, must have tractor/farm equipment experience; beef cattle, pasture maintenance, general farm work. Rick Tatum **Dawsonville** 770-530-4770

FARM MACHINERY

If you have questions regarding this category, call 404-656-3722.

Only farm machinery and equipment owned by the advertiser and used in his/her own farming operation can be advertised; those persons advertising for machinery and equipment wanted must be seeking those items for their own farming operation.

'47-'50 8N Ford tractor, 4' Bush Hog, harrow, box scrape; also, parts tractor, if needed: \$3500 all. Pamela Glanton **Thomaston** 706-646-2195

(2) 250 gallon saddle tanks w/mounts; \$1200. R Weaver **Fairmount** 770-773-6243

1-row Cole planter mounted 3 p.h. cultivator with fertilizer, good condition: \$500. Chuck Anthony **Jefferson** 706-658-6081

100 gl. spray tank, 20 ft. boom, PTO steel pump, remote handgun hose, 3pt. linkage, used twice: \$2,250 obo. Peter Dean **Monroe** 770-267-9425

100 kW generator powered by John Deere, 300 hrs. used on chicken farm; asking \$6500. Otha Brown **Yatesville** 706-472-3552 770-550-5133

16' tandem disc: \$295. Also 5-Shank chisel plow for 3-point hitch: \$295. Paul Stacey **Toccoa** 706-886-6994

1700 6 -36 John Deere vacuum planters for sale: \$6500. Steve Perkins **Whigham** 229-220-1167

18 ft. spreader truck, \$17,000; Lewis Brothers housekeeper, \$11,000; 245 MF tractor, John Deere tractor, John Deere 60. Doug Queen **Hoschtton** 770-403-1432

18-row, 3 pt hitch Vann sprayer, new hydraulic pump and solenoid valves. Mike Bird **Americus** 229-942-3835

1930 Ford A-A truck parts, too many list (motor-trans), large truck load: \$1700. John Deere 650: \$2200. Rich L Thompson **Rossville** 423-991-7530

1930s electric cook stove; \$350. Cast iron double sink; \$60. Metal kitchen cabinet; \$150. Jimmy Garvin **Warner Robins** 478-396-2409

1946 John Deere A, rebuilt engine, starter, generator, carburetor; new front tires, good rears, new paint, parade/work ready: \$3000. Harris Ertzberger **Jacksonville** 912-278-0464

1948 Ford 8N, needs rings; \$900. James Simmons **Oxford** 770-786-5786

1949 9N Ford Tractor, good condition, includes Bush Hog, 1990 flatbed 4-ton Hooper trailer \$2800. Barry Pratt **McDonough** 478-808-7382

1956 IH Farmall 200 with two-row cultivators, fast hitch, 3-pt. connection: \$3800. Larry Vest **Calhoun** 706-280-4894

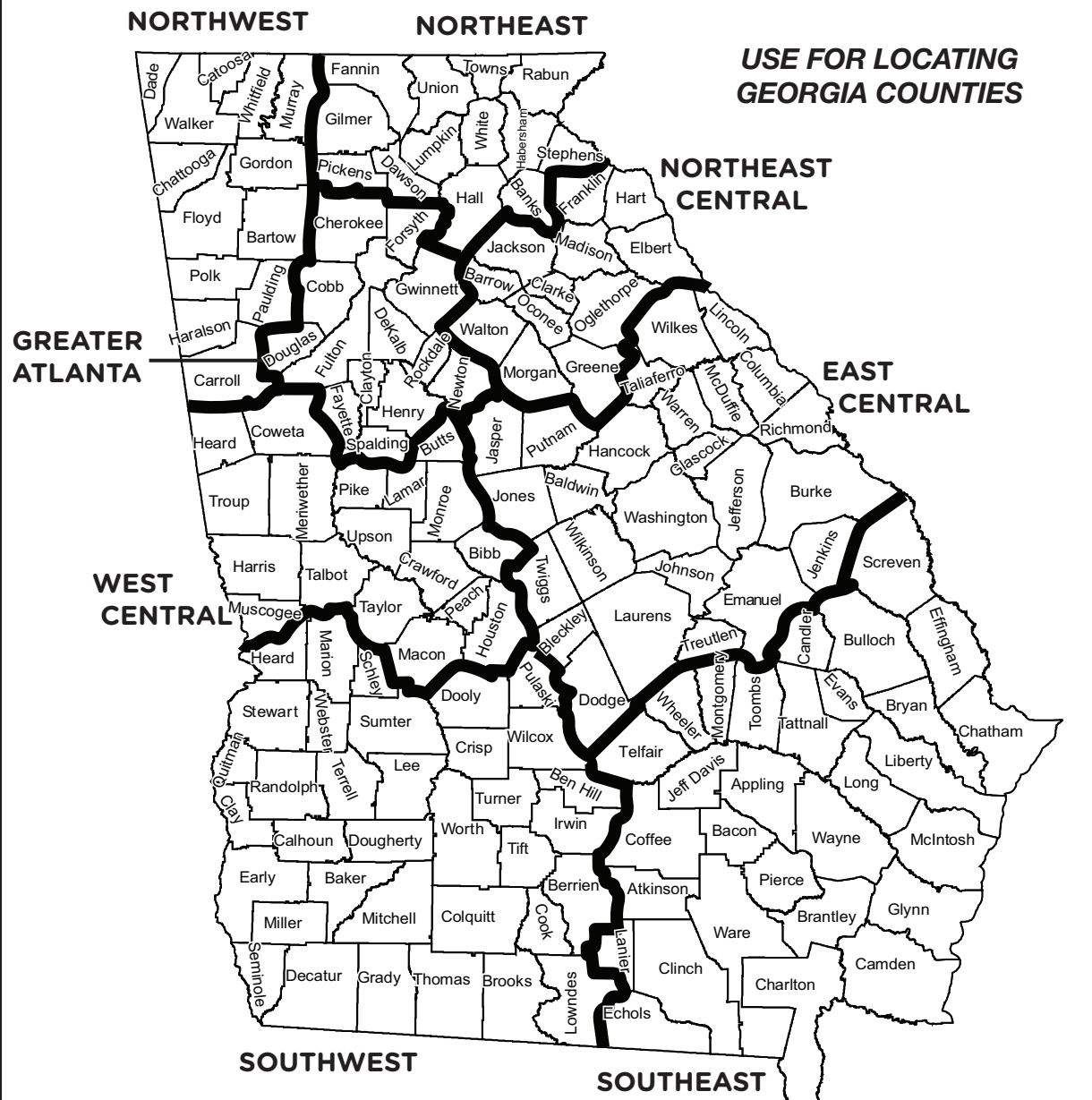
1959 Fordson Power Major, 52 hp, diesel runs good, 3pt. hitch PTO: \$3000 obo. 6 ft. scrape blade: \$200. All purpose plow: \$150. Christopher North **Whitesburg** 770-842-4198

1961 JD 4010 tractor: excellent condition, used very little, always parked in pole barn, looks like new; \$10,000. Oglethorpe County. Bert Card **Cumming** 678-513-0703 404-402-1189

1963 Ford 4000 diesel tractor, rebuilt engine, 3 new tires, rebuilt injector: \$2500. Flora Sawyers **Waleska** 770-720-7511

1968 Ford 4000, good condition, no power steering, runs well: \$3500. William Brooks **Cochran** 478-214-3689

1969+ Massey Ferguson 135, needs engine build, steering box; owned 35 years. Bushhog, 5' blade, harrow, other eq., good tires: \$2899. T Burch **Snellville** 404-274-0102



1976 3600 Ford Tractor, diesel, power steering, locking differential, rebuilt injector pump, eng., two pieces of equipment: \$6500. Kenneth Dunn **Powder Springs** 678-366-5687

1985 Ford F250 diesel heavy-duty, extended cab, 4 WD, AT, PS, 8' bed, good interior, good farm truck: \$2150. James Griffith **Rydal** 770-382-7279

1987 Honda Fourtrax 125, good compression, engine turns over but has not cranked in years; \$300. Dan Fox **Calhoun** 770-548-5932

1995 Freightliner FLD120, sleeper, 435-N14 Cummins Super-10 trans.; new tires, rear studs/nuts, airbags, real seals, leveling valves; oil changed. Sidney Osteen **Broxton** 912-222-2799

1997 John Deere 310E backhoe, two buckets (12" and 24"), good running condition. Earl Hilliard **Hawkinsville** 478-230-3612

1999 Ford F-150 work truck, looks bad but runs good: \$700. Winnie Hall **Barnesville** 404-993-0136

1999 JD Tractor 4300: 1,234 hr loader, tiller, 60" BH, fork lift, box blade. Eileen Becker **Alpharetta** ep.becker1@gmail.com 404-625-5781

1999 Nissan Frontier, 4 cyl. Believe it has new engine, cold air, always starts, does not leak/smoke; \$2000/OBO. Jerry Haynes **Covington** 678-660-3584

2 Bobcat buckets, 12" and 28": \$500. Old manure spreader. Ray Nelms **Rock Spring** 423-227-4770

2 JD 4430 tractors, cab and air: \$19,250. JD 4840, cab and air: \$16,500. JD 7720 combine: \$8500. Andy Sumner **Wrightsville** 478-484-6984

2 JD 71 planters on tool bar; MF 3-14 bottom plows; 2-row rolling cultivator; DARF 8 ft. harrow. Tommy Brazier **Fitzgerald** 229-831-4775

2000 Ford diesel tractor with p/s, locking differential and good tires: \$4750. Harry Puckett **Buford** 770-655-7354 770-655-7354

2004 Fella SM320 10' hay disc mower; needs cover and cover frame, low hours: \$2900 OBO. Julie Full **Appling** 706-830-5965

2008 Case 2588 combine, 4WD, shelter kept, 2000 hours, nice; \$68,000. Headers also available. Zach Shanklin **Albany** 229-881-6383

2015 10-wheel Frontier wheel rake, WR1010. Very good condition, less than 400 acres on it: \$3500. Jordan Shurling **Soperton** 912-529-3988

2016 JD5075E, 1900hrs: \$16000; 2014 JD5075E, 4900hrs: \$8000. Jimmy Forrest **Augusta** jforrest@dixiebellepeaches.com 803-685-7735

2017 Great Plains drill, like new, around 40 acres; 3pt. hitch, 6ft, no till. Kenneth Swim **Lincolnton** 706-830-0210

2017 L4701 Kubota tractor w/ front end loader & spear, approx. 50 hours. R M Hice **Barnesville** 770-468-1602

250 Bobcat Miller welder generator, torch and tanks, tool boxes on trailer with tools: \$7500. Keith Garvin **Byron** 478-955-4236

28' Unverferth field cultivator: \$5500. 2 grain elevators, Pitts. steel, ready for transport. Ronnie Batten **Ambrose** 912-309-9433

3 Snapper rear engine mower frames w/good decks/gears and 6 various brands/sizes push-mowers, all for parts: \$215. J. Shelton **Martin** 706-969-4244

30" Lowery dirt scoop, 3 ph. operates both ways. Rope or hyd. dump; \$300. Thomas H Taunton **Butler** 478-862-3138

3000 Ford diesel with power steering. Jim Thompson **Fayetteville** 770-680-0817

3pt hitch aerator, 6 or 7 ft long. Tommy Nale **Milner** 770-584-7654

4-row angle-frame cultivator, std. crankshaft, for Ford 6-cylinder, 8-9-tw tractor; cylinder head for Ford, 3 and 4 cylinder tractor. Bobby Alberson **Chula** 229-326-0052

5 ft rotary mower, HOWSE Model 500, small rust, transmission 1 year ago: \$300. Jim Wolfgang **Milledgeville** 478-932-5611

5 hp mulch-maker, leaf chipper/shredder, good condition, shelter-kept: \$300. Imogene Watson **Cumming** 770-887-5661

575 New Holland square hay baler, excellent condition: \$15,000. Pictures available. Keith Yawn **Hazlehurst** 912-375-7743 912-539-0262

6 ft landscape rake, 3pt. hitch: \$200. Robert Conkle **Hampton** 770-584-2373

604XL Vermeer round baler; \$10,500; pull-type John Blue Sprayer w/300gal tank, 36' boom; \$2000. Russ Elliott **Lizella** 478-935-8180

95 JD335 round baler, 4x4 bales, twin twine arms, sheltered, excellent condition; \$5000. Pictures available. Fuller Anderson **Palmetto** 770-463-4971

9ft Leinbach drag harrow, 70 teeth: \$950. 215-gal heavy-duty aluminum spray tank: \$650. Mark Rivers 7463 Hobbs Rd **Stapleton** 30823 706-830-4327

Ag-max 790 disc mower caddy; very good condition: \$2400 OBO. Donald Chandler **Winterville** 706-742-8906 706-247-3858

Agris V-rake A1085, Rhino mower TW72, Demco sprayer P3, JD hay-spear. Keith Stewart **Buford** 404-538-9092

Allis Chalmers WD45 and CA: \$1,000 ea. As is where is. Not running at the time. Steven Moss **Canton** 770-345-1194

Antique Ford tractor parts, 1950s model. Call for information. Carol Stubbs **Covington** 770-788-8877

Antique tractor collection: two Allis Chalmers WD40s, one WD45, one model B and one Farmall H; none running. Jesse Arnett **Tifton** 229-382-6517

APS1 1560 Land Pride (no till drill seeder), very good condition, 2012 three pt. hitch, 60 inch: \$3250. George Reeves **Moreland** 678-315-4517

Backhoe, JD 4x4, 410E w/ extended hoe, root rake, new rubber; good condition: \$20,000. Steve Odom **Ashburn** 229-364-3703

Bobcat 553, new tires, wheels, seat, paint, Kubota diesel engine and good bucket: \$10,500. Roy Pruitt **Douglasville** 770-595-7891

Bush Hog, 7', 3pt hitch, excellent working condition: \$1200 OBO. James Robinson **Good Hope** 770-363-6406

Bushhog 2308 8ft-wide pasture cutter, almost new condition: \$4,000 OBO. Lamar Tallant **Cumming** 404-557-9105

BushHog brand bush hog, 6ft, like new: \$1800. Lloyd Touchton **Morris** 770-633-0490

C-99 Ditch Witch walk-behind trencher, new parts to repair, needs putting together: \$1500. W.G. Griffin **Byron** 478-396-2409

Case 1440 Combine: Machine runs good, 4-row corn and 20' platform head, 2 parts headers; \$10,000 OBO. Shelby Hart **Glennville** 912-237-2709

Case IH 2555, 2055, 2055 salvage; NHTR85 both heads, TR85 salvage; JD 7300 and 7100 planters; JD210 harrow Donald Akins 1122 Jim Rowe Hightower Rd **Collins** 30421 912-557-4616 912-245-9837

Case IH 7130 Tractor, dual tires, 4WD; \$35,000 Sam Holland **Lumber City** 912-497-0005

CAT 941b loader, great engine, 3304 nonturbo runs clean, quiet; excellent bucket tanks, hoses. Carl **Calhoun** 770-722-2008

Craftsman tractor, turning plow, drag harrow, cultivator, seed planter, disc harrow. Robert Staines **Fayetteville** 404-680-2172

Cub Cadet lawn tractor, 1960s-70s model, great to restore. Open to offer. Roger Holley **Wrightsville** 478-232-8381

Cub Cadet, John Deere lawn tractors, no engine in either one; both for \$150 OBO. Tom Foster **Morrow** 770-961-4350

Cultivator on Pittsburg Frame: \$350. Keith Isdell **Sylvester** 229-809-1531 229-224-7730

Damaged 12-tower Zimmatic pivot: Could be repaired, used for parts or building materials. Make an offer. John Williams **Colquitt** 229-400-0777

Empty used gasoline steel skid tank; approx. \$300 OBO. Buyer loads item. Nicole Raines 332 Ellison Rd **Tyrone** 30290 404-281-1905

Farm trailer, solid, treated wood, 10 ft. by 7 feet; great for hauling wood, feed or hay rides: \$250. David Cagle **Fairmount** 770-796-2555

Farmall 140, cultivators and part planters: \$650. Super A tractor: \$1000. Nelson Massey **Conyers** 770-483-2639

Farmall M tractor, restored, in good running condition; \$2200. Danny Hogan **Dexter** 478-984-6415

For sale: one side-wheel rake, all new wheels: \$950. Retired from farming. Mike Boyer **Watkinsville** 478-232-1759

Ford 1954 Jubilee tractor, engine fresh overhaul, new paint, good tires, runs and looks good: \$3350 OBO. Wayne Norman **Lavonia** 404-245-5023

Ford Golden Jubilee, good tires and sheet metal, gas, 12V, rebuilt and painted: \$4,500. Emily Kenney **Vidalia** 912-537-2890

GEHL 309 manure spreader: \$4000. Emmett Renfroe **Statesboro** 912-531-1620

Grain-O-Vator feed wagon, good condition. International TD15C dozer for parts. Randy Wilhoit **Cohutta** 423-619-6416

Grappling thumb attachment for Mahindra backhoe. May work on other brands also; \$250. George Scoville **Macon** 478-745-2524

Heavy-duty posthole digger with steel frame to hold upright; has 6", 8" and 12" augers: \$500. Albert Twickler **Cataula** 504-413-4210

Hobart 4346 commercial meat grinder; mixer holds 240lbs, grinds 60lb/minute, 7.5hp, 3ph, uses standard #32 knives and plates. Tom Jelly **Clermont** 770-530-6586

Hopper bottom grain trailer; 3-phase diesel 25K generator; 10 irrigation fiberglass size 11-2 24; new 3 gravity wagons; header trailer. Dave Mckim **Montezuma** 478-636-0244

Hyster forklift, 3500 lbs lift capacity, 10 ft lift height, hard tires. James L Wicker **Perry** 478-952-6718

International Loadstar grain truck, steel body, hydraulic lift; \$2250. Wayne Rivenbark **Metter** 912-362-2108

Irrigation VFD and motor systems designed and built in GA, 5-500HP 230/460VAC. Carl Tolbert 3905 Steve Reynolds Blvd **Norcross** 30093 ctolbert@bdindustrial.com 678-523-2050 678-240-2058

JD 2016 XUV 590I S4, 4 wd, lights, poly roof, windshield, 23 hrs.: \$11,500. James Green **Canton** 678-485-5651

JD 4320 w/720 loader, joystick, dual remotes, canopy, bucket, forks; \$16,000. JD 4450 c/a, 158 loader, powershift, new rubber: \$32,000. Ernest Powell **Montrose** 478-488-0674

JD 6200 2WD, bucket, fork, pallet, hay, new interior, new tires, excellent condition, 3541 hrs, 66 HP, PTO engine, 89 HP, 1995; \$25,000 cash. Roger Ansley **Cornelia** 706-778-4165

JD 7000 6R narrow pull-type planter, liquid fert, insecticide boxes, monitor, shedded: \$6500. Steve Peters **Louisville** 478-494-1204

JD 9960 cotton picker 6825/4450hrs, duals, mud hog. Mike Baker **Lenox** 229-686-4719

JD dirt pan 1510C, excellent condition, 15 yd.: \$28,500; Reynolds 8c dirt pan, excellent condition: \$7500. Jimmy Tripp **Eastman** 478-231-8035

JD24T square balers: One needs knott repair, one parts only; \$700 for both. Ford PTO bar rake: \$400. Good condition. Larry Evans **Royston** 770-530-1377

JD335 Baler, excellent condition, only 2600 bales, string tie: \$5800. Kelvin Irvin **Eatonton** 404-569-9881

John Deere 1010 tractor, wide front wheels, good engine, tires, tranny and brakes; second owner; clutch stuck: \$2000. Morris Gilreath **Gainesville** 770-532-1424

John Deere 650 mower; corn sheller, two-hole, in cabinet; plows, one two-horse turner log splitter, 27-ton. Billy Mote **Blairsville** 770-963-0031

John Deere 7200r w/ 58xx hours. Has big hydraulic pump and 20 speed auto-quad transmission; \$75,000. Hunter Crosby **Millwood** 912-614-2292

John Deere Snap-on Duals, in good condition, size 18.4.38 John Paul Ellis **Statesboro** 912-865-9597

Killbros 350 grain wagon, used, good condition, kept in shed. Call for more information. Kenneth Shealy **Winterville** 706-296-1532

Krone 323S disc mower caddy, 500 gallon fuel tank. New Holland side delivery hay rake. James Martin **Waynesboro** 706-558-5005

Kuhn GMD240 double lite assembly with harness, new condition: \$100. Joel Boss **Kingston** 770-606-9238

Lewis Bros. spreader, \$3000; 10-disc Taylorway harrows, \$1000. Allen Pardue **Murrayville** 770-654-7502 770-983-7471

Lilliston 12 ft. grain drill, needs new distributor cogs: \$250 OBO. Randy Lowe **Roberta** rlowe@pstel.net 478-836-3208 478-837-6018

Mahindra 2816 4x4, 28 hp tractor w/166 hrs., always sheltered: \$8500. L.D. Carver **Jasper** 770-735-3432 770-312-3910

Massey Ferguson 135, 1968, with box scrape and 6 ft scrape blade, very good condition: \$5200. Joe Wood **Bishop** 30621 706-769-4070 706-614-3481

Massey Ferguson two-way moldboard plow, used condition, manual rotate 2-14. E pict available. Donald Holloway **Americus** 229-942-6317

Metal conical fertilizer broadcaster, 3-pt. hitch, tractor PTO driven Sitrex 150. Ann Earley **Canton** 770-401-7355

MF 560 round baler, older model, hand-tie, barn-kept: \$800. Meyer **Greensboro** 706-347-0417

Model G Allis Chalmers tractor, 4-cyl. gas engine, good condition: \$3000. P C Holbrook **Boneville** 706-595-3200

New Holland 1049s Stackwagon, good condition; \$12,500. Josh White **Coleman** 229-603-3818

New Holland TH-75, cab, air loader, 4x4, 36 dual tandem, GN-trailer dovetail ramps; 1980 Int. 2155 tractor, DT-466 5+2 TM 13 OK. Clark Holton **Douglas** 912-592-8584

New Idea manure spreader, mod12-A, ground-driven, has new sides, needs new floor, have new conveyor, tires good: \$900. Norman Giancola **Watkinsville** 706-338-9595

One 457 round baler, and one 702 John Deere rake: \$8000. Wayne O Blansit **Summerville** 706-578-2135

One Ford 4 bottom 2-way plow: \$2500. One 4 row KMC Strip Till: \$2500. One Buffalo Hi Residue Cultivation: \$3000. J W Adkins **Vienna** 229-805-0255

Market Bulletin Farmland Ad Form

The Spring 2019 Farmland Edition of the *Market Bulletin* will be published March 13. The deadline to submit ads for that issue is Feb. 27.

Ad guidelines: Only Georgia farmland of five acres or more may be advertised. Include price, acreage and county where the property is located. All property must be for sale by the owner. Property under contract with a real estate agent cannot be advertised. Limit descriptive terms to property characteristics or structures. A maximum word count of 30 – including name, address, phone number and city – is permitted in Farmland ads. Only one ad per subscriber per issue. You must be a paid subscriber to advertise in the *Market Bulletin*.

Subscriber Number: _____

County: _____ Section: _____

The following statement must be signed by the advertiser submitting this notice for publication:

I hereby certify that the above notice meets all the necessary requirements for publication in the upcoming farmland edition of the *Farmers and Consumers Market Bulletin*.

Livestock Sales and Events Calendar

APPLING COUNTY

1st & 3rd Saturdays, 12:30 p.m.: Goats, sheep, small animals, feeder pigs; A&A Goat Sales, 187 Industrial Drive, Baxley. **Call** Allen Ahl, 912.590.2096

ATKINSON COUNTY

2nd & 4th Saturdays, 1 p.m.: Goats, sheep, chickens, small animals; Pearson Livestock, 1168 Highway 441 N, Pearson. **Call** Roberto Silveria, 229.798.0271

BEN HILL COUNTY

Every Monday, 1 p.m.: Cattle; South Central Livestock, 146 Broad Road, Fitzgerald. **Call** Thomas Stripling, 229.423.4400 or 229.423.4436

BLECKLEY COUNTY

2nd & 4th Saturdays, 9 a.m.: Farm misc., 1:00 p.m. Ga. Lic. #3050; Goats, sheep, chickens, small animals; Cochran Auction Barn, 290 Ash St., Cochran. **Call** Mark Arnold 478.230.2482 or 478.230.5397

BUTTS COUNTY

Every Wednesday, 11:30 a.m.: Cattle 2nd & 4th Wednesdays, 11:30 a.m.: Dairy cattle; Mid-Georgia Livestock Market, 478 Fairfield Church Road/Hwy. 16 W, Jackson. **Call** Brent Galloway, 770.775.7314

CARROLL COUNTY

2nd & 4th Saturdays, 4 p.m.: Goats, sheep, chickens, small animals; Long Branch Livestock, 813 Old Villa Rica Road, Temple. **Call** Ricky Summerville, 404.787.1865

Every Monday, noon: Cattle, goats, sheep; Carroll County Livestock Sales Barn, 225 Salebarn Road, Carrollton. **Call** Barry Robinson, 770.834.6608 or 770.834.6609

CHATTOOGA COUNTY

Every Friday, 7 p.m.: Goats, sheep; Trion Livestock Auction, 15577 Hwy. 27, Trion. **Call** McKinley Evans, 678.276.5127

CLARKE COUNTY

Every Wednesday, 11 a.m.: Goats and sheep; noon, cattle. Northeast Georgia Livestock, 1200 Winterville Road, Athens. **Call** Todd Stephens, 706.549.4790

Thursday, Feb. 14, noon: UGA 27th Annual Focus on EPDs Bull Sale. Selling 30 Angus bulls, 8 registered Angus heifers and 8 Angus and Angus-cross commercial heifers. UGA Livestock Instructional Arena, Athens. **Call** Carroll T. Cannon, 229.881.0721 or 229.881.2705. cannonmarketingcompany@gmail.com

COLQUITT COUNTY

Every Wednesday, 1 p.m.: Cattle; Moultrie Livestock Co., 1200 1st Street NE, Moultrie. **Call** Randy Bannister, 229.985.1019

One-row cultivator: \$100. Metal barrels: \$20. 2 for fuel, 3 for dock. Ronald Rush **Franklin** 706-675-3417 706-812-5271

Parts catalog K-45F truck, \$75; Manual Waukesha diesel and parts; 1940 wringer washing machine, \$65. John Fleming **Hartwell** 770-718-6740

Peanut sheller/grader, excellent condition; \$800. Jimmy Johnson **Sylvania** 912-682-6768

Pecan spray truck, nitrogen applicator, 300 gal tank, JD 610 chisel plow, 5 bottom

Ford plow. Derrell Bennett **Adel** 229-561-0480

Peripheral mower, litter rejuvenator/pulverizer, 84" with 72" working width; works well: \$2,000. John Reiman **Dewey Rose** 571-243-2410

Phillips "Doobob" 5-shank field cultivator, ripper tillage tool, 3 pt. hitch, great condition: \$395. Royce Brooks **Acworth** 770-378-2564

PJ Gooseneck trailer: 24' flat deck with slide-out ramps, good condition, no problems. Can send pictures: \$4500. Chris Newman **Canton** 770-883-5952

COOK COUNTY

1st, 3rd & 5th Saturdays, 1 p.m.: Goats, sheep, chickens, small animals; Deer Run Auction, 1158 Parrish Road, Adel. **Call** John Strickland, 229.896.4553

COWETA COUNTY

Feb. 15th & 16th.: Large poultry show and swap meet; Coweta County Fairgrounds, Newnan. **Call** 770.900.1669; cvpa-newnan.org

DECATUR COUNTY

2nd Saturday, 1 p.m.: Goats, sheep, chickens, small animals; Waddell Auction Co., 979 Old Pelham Road, Climax. **Call** John Waddell, 229.246.4955

EMANUEL COUNTY

Every Monday, 1 p.m.: Cattle, slaughter hogs; Swainsboro Stockyard, 310 Lambs Bridge Road, Swainsboro. **Call** Clay Floyd and David N. Floyd, 478.945.3793

2nd & 4th Saturdays, noon: Goats, sheep, chickens, small animals; R&R Goat & Livestock Auction, 560 GA Hwy. 56 N, Swainsboro. **Call** Ron & Karen Claxton, 478.455.4765

Every Tuesday, 10 a.m. & 1st Fridays: Cattle special sale; Dixie Livestock Market, 133 Old Hwy. 46, Oak Park. **Call** Willis & Tammy Sikes, 912.578.3263

FORSYTH COUNTY

Every Tuesday, noon: Cattle, goats, sheep; Lanier Farm's Livestock Corp., 8325 Jot-Em Down Road, Gainesville. **Call** Tyler Bagwell, 770.844.9223 or 770.844.9231

FRANKLIN COUNTY

Every Tuesday, noon: Cattle, goats, sheep; Franklin County Livestock Sales, 6461 Stone Bridge Road, Carnesville. **Call** Chad and Clay Ellison, 706.384.2975 or 706.384.2105

GORDON COUNTY

Every Thursday, 12:30 p.m.: Cattle, goats, sheep, slaughter hogs; Calhoun Stockyard Hwy. 53, 2270 Rome Road SW, Calhoun. **Call** Dennis Little & Gene Williams, 706.629.1900

GREENE COUNTY

Every Thursday, noon: Cattle, goats, sheep; Duvall Livestock Market, 101 Apalachee Ave., Greensboro. **Call** Jim Malcom, 706.453.7368

JEFF DAVIS COUNTY

1st & 3rd Fridays: Horse sale, 7:30 p.m.; Circle Double S, 102 Lumber City Highway, Hazlehurst. **Call** Steve Underwood, 912.594.6200 (night) or 912.375.5543 (day)

JOHNSON COUNTY

1st & 3rd Mondays, 7:30 p.m.: Chickens; Ol' Times Auction, 503 Hill Salter Road, Kite. **Call** Robert Colston, 478.299.6240

Planter for four-wheeler, plates and cogs: \$500. Norman Cook **Buena Vista** 229-649-7430

Skidsteer 72" tiller, \$1875; 84" litter bucket, \$1875; 48" forks, \$550. Cash. Jim Bishop **Franklin** 706-675-3943 678-633-1420

TO 35 gas, hi-lo trans, good sheetmetal, not running; \$975; 2 spin out rims/centers; \$975. James Sullivan **Vidalia** 912-537-4944

Tractor wheels, JD, for 13.6x28 or 14.9x28 tires; also 24" rims 8.3x24, 9.5.24. Ryan Baerne **Nicholson** 706-757-2672

Tractors: JD 5425R, NH TS100 CS, IH I385, Kuhn cutter, GMD 700 w/ Kelly caddy KEEJ01. Keith Stewart **Buford** 404-538-9092

Trailer axle and tires, 3-5K axles, like new; 4040 John Deere 4-post quad range; 2007 Polaris Ranger XP 700, 4-wheel drive. H. David Green **Montrose** 478-278-5252

Tree spade, 65", Big John truck, mounted on Ford L-9000 tandem. Selby Hull **Hampton** 770-946-8627

Tree Spade: Big John 90" on 1997 Ford 9000, 8LL Trans, CAT eng. 137,000 mi. Jerry Garber **Rex** 770-823-6789

JONES COUNTY

Every Saturday, 6 p.m.: Goats, sheep, chickens, small animals; 5 p.m., farm miscellaneous, Ga. Lic. #3188; Buggy Town Auction, 1035 Hwy. 11, Gray. **Call** Jimmy Burnett 770.584.0388 or 678.972.4599

LAMAR COUNTY

Every Friday, 6 p.m.: Goats, sheep, chickens, small animals; 5 p.m., farm miscellaneous, Ga. Lic. #3188; Buggy Town Auction Market, 1315 Highway 341 S, Barnesville. **Call** James Burnette 770.584.0388 or 678.972.4599

LAURENS COUNTY

2nd & 4th Thursday, 6 p.m.: Goats, sheep, chickens, small animals; Horse Creek Auction Co., 5971 Hwy. 441 S, Dublin. **Call** Daniel Harrelson, 478.595.5418

MADISON COUNTY

Every Friday, 6 p.m.: Chickens, small animals; Gray Bell Animal Auction, Hwy. 281, Royston. **Call** Billy Joe Bell, 706.245.4205

MARION COUNTY

1st & 3rd Thursdays, 7 p.m.: Goats, sheep, chickens, small animals; Auction 41, 4275 GA Hwy. 41 N, Buena Vista. **Call** Jim Rush, 706.326.3549. **Email** rushfam4275@windstream.net

PULASKI COUNTY

Every Tuesday, 1:30 p.m.: Cattle, goats, sheep; Pulaski County Stockyard, 1 Houston Street, Hawkinsville. **Call** John Walker, 478.892.9071

SEMINOLE COUNTY

Every Wednesday, 1:30 p.m., 3rd Saturday Special Sale, 1:30 p.m.: Cattle, goats, sheep; Seminole Stockyard, 5061 Hwy. 91, Donalsonville. **Call** Bryant Garland and Edwina Skipper, 229.524.2305

STEPHENS COUNTY

2nd Saturdays, 5 p.m.: W&W Livestock, Eastanollee Livestock Auction, Eastanollee. **Call** Brad Wood, 864.903.0296

3rd Saturdays, noon: Goats, sheep; Agri Auction Sales at Eastanollee Livestock Market, Highway 17 between Toccoa and Lovania. **Call** Ricky Chatham, 706.491.2812 or Jason Wilson, 706.491.8840

Every Monday, noon: Cattle, goats, sheep; Eastanollee Livestock, 40 Cattle Drive, Eastanollee. **Call** Mark Smith, 706.779.5944

SUMTER COUNTY

Every Monday, 1 p.m.: Cattle; Sumter County Stockyard, 505 Southerfield Road, Americus. **Call** Dr. LeAnna Wilder and Sam Steele, 229.380.4901

Troy-Bilt Tuffy rototiller, new 6HP motor, \$300. Good condition. Michael Magrum **Rydal** 706-509-8576

Troybilt rear tine tiller, horse model with 8 hp motor, used; \$300. Timothy Horst **East Dublin** 478-697-7052

TroyBilt Tiller, orig. heavy duty, 8 HP with some acc., parts catalog, etc. Tommy Walker **Rockmart** 678-684-9770 770-684-6150

Twin drum peanut dryer: Drums 28 X 60 inches, 3 phase; \$5000. Also Hobbs peanut cleaner, make an offer. Connie Hayes **Stilson** connie.jim.hayes@gmail.com 912-823-3563

Two 6ft cutters, 3-point hitch heavy duty. PTO, good condition, \$200 for both or OBO. Heavy duty chain lift, \$100, OBO. Warren Sapp **Ellabell** 912-661-1443

TYE seeder 1044474, NH baler BR740, BushHog 307 and FTH 600. Sitrex fluffier ST520H. Keith Stewart **Buford** 404-538-9092

Vermeer track walk-behind trencher, RTX100, bought new, used very little, stored inside, low hours; plus other various equipment. Joe **Lexington** 706-743-3994

TAYLOR COUNTY

1st & 3rd Tuesdays, 6:30 p.m.: Feeder pigs, goats, sheep, chickens, small animals; RockRidge Livestock Auction, 1357 Tommy Purvis Jr. Road, Reynolds. **Call** Melba Strickland, 706.975.5732

TELFAIR COUNTY

2nd & 4th Thursdays: Chickens, fowl, goats and sheep; check-in at 1 p.m., sale at 6:30 p.m. Horse Creek Auction, between Dublin and McRae off Highway 441. **Call** 478.595.5418

Saturday, Feb. 9, 12:30 p.m.: 21st Annual Bull and Female Sale; black Angus and SimAngus. Free delivery within 200 miles. Turnpike Creek Farms, Milan. **Call** Derek Williams, 229.315.0986.

THOMAS COUNTY

Every Tuesday, 1 p.m.: Cattle. 1st & 3rd Tuesdays: Slaughter hogs; Thomas County Stockyards, 20975 Hwy. 19 N, Thomasville. **Call** Jimmy P. Benton, 229.228.6960

TOOMBS COUNTY

1st & 3rd Saturdays, 11 a.m.: Feeder pigs, goats, sheep, chickens, small animals; Metter Livestock Auction, 621 Hwy. 1 S, Lyons. **Call** Lewie Fortner, 478.553.6066

TURNER COUNTY

Every Wednesday, 1 p.m.: Cattle; Turner County Stockyards, 1315 Hwy. 41 S, Ashburn. **Call** Alan Wiggins, 229.567.3371

UPSON COUNTY

Every Tuesday, 12:30 p.m.: Cattle, goats, sheep. L&K Farmers Livestock Market, 2626 Yatesville Hwy., Thomaston. **Call** Kathy and Lewis Rice, 706.468.0019.

WHITE COUNTY

First and third Saturdays, 4 p.m.: Chickens and goats; Coker's Sale Barn, 9648 Duncan Bridge Road, Cleveland. **Call** Wayne Coker Sr., 706.540.8418

WILKES COUNTY

Every Wednesday, noon: Cattle, goats, sheep; Wilkes County Stockyard, Hwy. 78 Bypass/302 Third Street, Washington. **Call** Kenny Durden and Linda Robertson, 706.678.2632

Notices for auctions selling farm-related items other than livestock must be accompanied by the auction license number of the principal auctioneer or auction firm conducting the auction, per regulations from the Georgia Secretary of State. Auctions without this information will not be published. Have an auction to put on our calendar? Contact Amy Carter at 404.656.3722 or amy.carter@agr.georgia.gov.

Vermeer tree spades: 44" on Ford F600 and 60" on 1993 F800; both excellent. Evelyn Brock **Cairo** 229-872-3554
Yanmar 1300D. 4x4. New pistons/starter/battery/filters/manual oil pressure gauge, runs great. New brakes. New clutch release bearing. Pics on CL. Bill Troxell **Milledgeville** 478-357-1036

Farm Machinery Wanted

4-6 yard pull-type dirt pan. Herbert Owen **Baldwin** 706-499-3606

Allis Chalmers older subsoiler with snap coupler hitch. Charles M. Summers **Elko** 478-987-7151

Belt-type hay conveyor wanted; electric or gas, fair condition only (pictures). Ben Parrish **Metter** ben@benparrish.net 912-536-2200

Complete mower setup for 1614 Economy (Jim Dandy) tractor; must be in usable condition. Alvin Crusan **Jackson** alphe43@bellsouth.net 478-994-7995

Corn drag-type conveyor wanted, must be in working condition, any brand. Send picture. Ben Parrish **Statesboro** ben@benparrish.net 912-536-2200

Forks to fit on tractor bucket for lifting pallets. Harrell Whitener **Coosa** 678-630-5354 678-459-7792

Looking for Freedom Hitch for Tractor Side. Marcus Satterfield **Cumming** 770-887-7943

Looking for IH tractor, any model from a 560 to a 1066 diesel wide front. Chuck Phillips **Cumming** 678-414-2313

MF 1040 tractor for parts. William Barrett **Jersey** 470-505-6908

Need forklift range to unload logs, must be at least 5,000 lbs lift capacity, rough terrain-ready, reasonable price. Steven Smith **Baxley** 912-210-8656

Seeking functional sorghum/sugarcane press: horse-driven models preferred, models requiring repair will be considered. Garrett Jones **Griffin** 678-588-6606

Seeking information about a stolen John Deere 2155; \$1000 reward for info leading to recovery. Heath Coker **Williamson** 770-468-4088

Tractor tire, size 16.9-30, 6-ply plus, used but serviceable. William Mitchell **Douglasville** wmitche3@bellsouth.net 770-949-1737

W4 or 04 Farmall for parts or restore. Jimmy Salter **Thomaston** 706-601-5889

Want 24"-30" gristmill in non-working order. Will pay reasonable price and pick up. Henry Hine **Conyers** 404-310-6490

Want 8 ft pull-type drop fertilizer/seed spreader in good condition and kept dry. Wesley Carlan **Homer** 423-888-7272

Wanted: Farmall Cub tractor (red model) for parts or repair, running or not. Thomas Tucker **Lithia Springs** 770-941-2354

Wanted: Three-point hitch adjustable scrape blade. Paul Smith **Warner Robins** 478-952-3899

FARM SUPPLIES

If you have questions regarding ads in this category, call 404-656-3722.

(26) heavy duty "Behlen" style corral panels: 6' high, 12' long, J-Leg design, galvanized; \$3500. Mike Hedden **Dallas** 770-443-4500

(32) 48" Hired Hand slant wall poultry house fans: \$300 each. Joseph Rhodes **Knoxville** 478-214-0759

1 wood cook stove: \$400. James McCain **Dahlonega** 706-864-5977

1000 gallon fuel tank; \$400. 250-gallon propane tank; \$300. New and used concrete blocks; \$1.25 each. Lee Rusk **Woodstock** 770-928-1195

1990 Yamaha Big Bear four-wheeler, camouflage, new battery, good tires, new oil change, kept in shelter, runs good: \$1200. James Allen **Eatonton** 706-816-5702

2 Dyna-Glo propane 360 tank top heaters, 30-40 thousand BYUs Used once. Larry Ward **Thomaston** 706-648-3131 706-656-3131

2018 JDX350 lawn tractor, Kawasaki engine, 42", 18.5 HP, v-twin mulch kit, great condition; \$2800. R.F. Pollard **Kennesaw** 770-427-1201

275+ gallon tank (tote) w/metal cage, 5" top cap, bottom valve; \$50. C. Stovall **Dahlonega** 678-491-0838

275-gallon steel skid tank: \$100. Nicole Boland-Raines **Tyrone** 404-281-1905

45x72 Quonset building, never erected, 22 gauge steel, 14x28 end openings; \$15,999. Glen Butcher **Camilla** 229-449-3294

500 gallon underground fuel tank. 115V fuel pump; \$300. Keith Garvin **Byron** 478-955-4236

60L X 35W metal building, ring-type construction, 22-gauge galvanized steel; 15 X 18 opening at each end. Ann J English **Cochran** 478-230-4642

6100 nitrogen tank pump and plumbing, heavy duty; \$4500. Kenneth Perry **Girard** 706-833-2154

Anvil, blacksmith shop, 1870, 158 lbs (1-1-18 English Hundredweight); \$750. Jimmy Rich **Collins** 912-426-9099

ATV cattle guards, 92" wide X 8' long, drive over heavy duty: \$400. Vickie Barrett **Mount Airy** vickie@curraheetrailers.com 706-499-8009

Band-sawn lumber, 1x10x10 pine, air-dried; \$4.25 each. Other sizes available. Timothy Tucker **Newnan** 770-251-7612

Barrels: metal, plastic, stainless steel, 55 and 30 gals. Totes: 275 and 330 gal. Liz Allanson **Cumming** 678-231-2324

Broiler house equipment, 20 L.B. White propane brooders with hoses, 2 medicators, new roll of triply. Roy Thrasher **Madison** 706-342-2719

Broiler house equipment, space-ray brooders, bins, 36" fans, incinerator, 100kW generator, housekeeper spreader, other. Danny Satterfield **Calhoun** 706-280-5999

Brooders, electric spark LB heaters; \$30 each. Greg Wright **Talking Rock** 706-276-3242

Cub Cadet RT-65 garden tiller with Honda GC-190; self-propelled, forward and reverse, used one season: new \$999, will sell for \$650. David Combs **Jefferson** 706-367-4107

Custom-cut lumber, Wood-Mizer sawn, kiln-dried, milled for homes, flooring, cabinetry, barns, fencing, restorations, timber frames. John Sell **Milner** 770-480-2326

For sale used: 12 cattle panels, 4- 16' gates, 20 T-posts; all for \$200. Dennis Johnson **Oglethorpe** graceacresfarm@yahoo.com 478-472-8762 478-235-0733

Full set wooden handle garden tools, \$250; quail grow-out equipment, \$300; bonsai tools and supplies, fruit trees, more. Pittman Dye **Atlanta** 404-376-1704

Greenhouses: Six Stuppy gutter-connected bays, 30'x144', heaters, exhaust fans, two biotherm systems; \$20,000. Tom Johnston **Thomaston** 706-647-9239

Hay ring for sale; paid \$190, will sell for \$140. Used for two years. David Williamson **Hampton** 678-300-2239

Locust fence posts and rails. Barney Cook **Blairsville** 706-994-2600 706-745-8724

Lumber for sale. Will cut special orders up to 20' long, sawed with a bandmill, all sizes and lengths. Sawmillstone 5. Steven Smith **Baxley** sawmillsteve5@gmail.com 912-210-8656

New pallet: 8 in. octagon black pavers for horse barn, 350 total; \$975. Gwenn Evans **Royston** 770-530-4650

Ownsboro wagon, completely restored, new lumber, painted red, green long tongue with chains, spokes, fellows, good iron tires; will deliver. Robert Worley **Rome** 706-766-3578

Pro lick tank, fiberglass, good condition, ready to use. \$100. Henry Beckworth **Mitchell** 706-598-2106

Propane tanks for sale: 300- and 350-gallon; \$300 and \$350. Sandra Smith **Covington** 770-337-0160

Red oak slabs, 1" thick, 8 ft. to 12 ft. sawmill lumber: 10 cents/foot. Bob Marsh **Lawrenceville** 770-995-0637

Rubbermaid water tank, 100 gal: \$50. 50 gal sprayer: \$500. Round bale hay feeder for cattle, 4 sections: \$100. David Vaughn **Watkinsville** 706-769-6706

Sawmill blade for sale: \$200. Lamar Bryant **Cleveland** 706-878-8509 706-878-8509

Sawmill lumber: pine, oak, walnut, cedar, portable sawing boards, beams, slabs, turning blocks. Todd Chaney **Cartersville** 404-861-7402

Stock tank, structural resin, 100-gallon: \$160; four bath tubs, \$200; poly hay ring, \$75. Grady 1047 Housley Rd **Marietta** 30066 678-907-4141

Sugar cane kettle for sale. Ray Freeman **Dublin** 478-272-1307

Three-shank bottom plow, three-point hitch. Also, two propane gas tanks, 250 gallon. Samuel English **Jackson** 770-228-3019

Tunnel house for sale. George Weathersbee **Chester** 478-290-9721

Two aluminum loading ramps for lawnmower, etc.: \$100. Mary Ann Topper **Dawsonville** 706-216-6807

Two wood burning stoves, excellent condition: \$550 for each. Roger Keebaugh **Gainesville** 770-869-7941 678-725-6158

Used 8-frame bee boxes, 12 each deep; \$10 each. 14 each medium; \$18 each. Bee vacuum; \$100. All for \$250. James E Vaughn **Cornelia** 706-778-9554

Used metal 26 gauge covers 30". 60 sheets 14', 60 sheets, 22'; \$50 foot. Dale Wood **Bowersville** 706-371-7407

WoodMizer lumber, 1x12 pine oak trailer flooring, any thickness; resaw work. Larry Moore **Newnan** 678-278-5709

Farm Supplies Wanted

Chicken house trusses wanted. Mike Bloodworth **Knoxville** 478-836-2535

Hay rings in very good condition; call after 7 p.m. Raymond Long **Loganville** 770-466-2435

One serviceable farm implement tire, 750-20 with farm tractor tread. Doyle C Lindsey **Fayetteville** 770-851-5497

Tractor tires, 13x6x38. Harry Harris **Hampton** 404-925-7879

Used greenhouse, 24 x 60 or larger. Can disassemble and move. Levi Stoltzfuss **Kite** 478-246-5779



Get your Georgia Grown apparel today!
www.georgiagrown.com

LIVESTOCK

All livestock must have been in the advertiser's possession for at least 90 days before they can be advertised. Livestock listed must be for specific animals. Generalized ads such as "many breeds of cattle" or "want horses, any amount" will not be published. Ads for free or unwanted livestock will not be published. Ads for cats, dogs, reptiles, rodents and other animals not specifically bred for on-farm use will not be published.

Cattle

If you have questions regarding ads in this category, call 404-656-3722.

1 Gelbvieh/Angus bull (balancer); black, deep, long bodied, moderate frame, ready for heavy breeding, 4 y/o, great calves. Shane Burnett **Mansfield** 770-827-2240

10 black Angus heifers for sale, 500+ lbs., all shots, great selection of quality calves. Wallace Vassar **Hartwell** 706-436-1144

11 commercial bred heifers, 2019 fall calving, gentle, all shots and wormed, very nice group: \$1250. Eric **Watkinsville** 706-338-7673

15 purebred black Angus bulls: 1/2/3 y/o, docile, vaccinated, AI'd & natural service. K Schwock **Homer** 404-735-9524

16-19 m/o registered red Angus heifers, ready for breeding. Sire A-1. Easy calving. Good prices. Jorge Haber **Midland** 706-323-2405 706-570-5689

18 registered black Angus bulls, 8-20 months, gentle, good EPDs, semen tested and guaranteed. Wes Turner **Gainesville** 770-231-3373

2 black Angus bulls for sale, 2 y/o, great EPDs: \$2500 each. Brian Hart **Lafayette** brianhart@windstream.net 706-996-5070 706-996-5070

2 Limousin bulls, one purebred, one Limousin/Angus cross, 14 m/o. Joseph Chastain **Rabun Gap** 706-982-1396

2 yearling bulls. One SimAngus, gentle, handled daily. Pictures on request. Tom Brown **Canton** 404-259-0998

20 commercial SimAngus bred heifers (can be registered), due Aug/Sept: \$1500. Reg. Angus AI heifers, \$2500. Call for info. Landon Boyett **Glennville** 912-213-4062

20 Holstein heifers available. Most will give birth in months. Alejandro Sanchez **Eatonton** 706-473-3065

3 registered black Angus bulls, 15 m/o, semen-checked, ready to work; all are AI bred: \$1800. Greg Bennett **Cartersville** 770-560-2634

3 registered bulls, 2 Angus and 2 year old SimAngus. Black, BSE passed, ready for work. Jason Cope **Glennville** 912-654-3817 615-762-0746

3/4 mini Jersey, 1/4 Guernsey, eight month old, painted, polled bull; \$1000. Kelly Maxwell **Winder** 404-925-2369

30 yearling Braford bulls; 20 coming 2 y/o Hereford bulls. Jonny Harris **Screven** 912-586-6585

4 y/o Simmental bull, moderate-framed, easy handling, no problems, consistent calves. Sean Parker **Barnesville** 678-725-8013

40 bred cows and pairs, all black/BWF, mid age: \$1000 bred, \$1100 pair. Keith Mitcham **Oxford** 770-855-6563

5 year old Purebred black Angus Bull, low birth weight. Heath Simmons **Twin City** 478-299-6697

6 reg. black Angus bulls, 18 m/o, Finale Answer bloodlines, LBW. Don **Marietta** 404-886-6849

8 Angus cows, heavy-bred for 3rd calves: \$1550 ea. D Davis **Commerce** 770-616-6038

Angus bull, 27 m/o. used as heifer clean-up bull; available after 1/19/19. DJ Sheppard **White Plains** 706-453-6879

Angus/Beef Master commercial heifers, open or bred, shots and dewormed, farm raised, very gentle. Deborah Auldridge **Blythe** 706-825-2544

Beefmaster bulls/heifers, all ages, good bloodlines and disposition. Cary Bittick **Forsyth** 478-957-0095

Black Angus: Aristocrat-of-Wye granddaughters (6), \$1,200 each; grandsons, \$1,500 each. Gentle. Reliable replacement cows: \$1,000 each. Arthur Ferdinand **Palmetto** wstrvlr@bellsouth.net 404-867-8773

Black Polled Limousin bulls, AI sired, gentle, 24-27 m/o, five to pick from, ready to breed now. Jimbo Crumley **Statham** 678-409-3572

Black purebred Polled Beefmaster bulls and heifers; bulls gentle, some semen-tested; good conformation. Vernon Turner **Dalton** 706-278-7814

Bottle bulls and heifers available, guaranteed colostrum. Given Multimin 90, Triangle 5 and one shot. Brittney Peters **Social Circle** 470-334-1933

Bulls: Simmental, Angus, and SimAngus, 2.5 y/o and 16 m/o. Bred and open heifers, extensive AI breeding. William Clanton **Odum** 912-221-1383

Calving ease, milking ability, gentleness, registered polled Shorthorn bulls/show heifers/steers, excellent quality, Club Calf member. Kenneth R Bridges **Commerce** 706-768-3480

Charolais cow with 2nd calf; \$1250. Rodney Brooks **Glennwood** 912-523-5282

Crossbred heifer, 15 m/o, pasture exposed to Hereford bull. (2) 16 m/o registered Hereford bulls. Dalton Green **Ringgold** 423-385-5475

For sale: AWA registered Wagyu bull, DOB: 12/24/2008; proven breeder. James Whitaker **Warner Robins** 478-929-2000

For sale: Two registered 100% miniature Jerseys, male, DOB: 04/29/14 and 04/19/11, both proven breeders. Chris Pierce **Suches** 706-747-5413

Jersey cow, fresh with third calf, hand-milking three gallons a day: \$950 firm. Frank Wright **Talking Rock** 706-889-0998

Jersey cow, nice, with calf born in November; good milker, good nurse cow: \$1100. Chet Barrett **Mount Airy** cb@highvoltagecattle.com 706-499-8008

PB Simmental bull 3518680, Sire CNS Pays to Dream. Ready for spring breeding. AI-bred, great genetics/EPDs. Jonathan Saylor **Demorest** 706-244-5929

Pure bred red Angus bull, 16 months old, gentle: \$1600. W.W. Abney **Franklin** 770-301-5658

Red Angus Bulls, (18), 12 m/o bulls, calving, fleshing ability, great selection; \$1250 and up. Joe Gibson **Rome** joe.surf@comcast.net 706-506-3026 706-802-1620

Reg. Angus bulls, 1-2 y/o, calving ease, high growth, AI sired by All-In, Prophet, Sunrise Highwayman. Ken Mcmichael **Monticello** 706-819-9295

Reg. Angus bulls, excellent EPDs, low birth weights, increase profits, retain excellent replacements. Gillis Angus Farm. Windell Gillis **Eastman** 478-231-8236

Reg. Charolais, Angus and Braford bulls, Many to choose from, gentle, ready for work. Adam Marsh **Garfield** 912-536-1430

Reg. red Angus herd bulls; 3 are coming 2s; one is 4. All forage raised. Jim Hudson **Broxton** jimdhudson@windstream.net 912-592-1225

Registered Angus and Simmental bulls, AI sired, semen tested; 15 mos. to 2 yrs. old. Glenda Walker **Calhoun** 706-629-2632 770-878-0961

Registered black Angus bulls, yearling: \$1250. Eugene Ridley **Lafayette** 706-764-6110

Registered Charolais bulls, excellent breeding stock, gentle easy handling, vaccinated/dewormed. Madison Morgan **Clyo** 912-661-3050

Registered Charolais: superior genetics and disposition, bulls semen-tested; cows, heifers and calves. Quantity discounts. Bobby Burch **Eastman** 478-718-2128

Registered Hereford sire bull. Proven herd, easy calver, docile, Victor pedigree; \$2500. Joey Yasinski **Senoia** 678-471-7106

Registered Polled Hereford bulls and cows. Twin Creeks Mountain Farm. twincreeksmountainfarm.com Roger Ledford **Young Harris** kentrekin2001@yahoo.com 706-897-1081

Registered purebred black Simmental bulls, top bloodlines, semen tested, several to choose from; 14-21 m/o. Steve Watson **Dawsonville** 706-429-5349

Santa Gertrudis bulls, breeding age and younger. Eddy Mullinax **Elijay** 706-273-4282

Santa Gertrudis heifers and bulls; weaning aged and yearling aged. Santa Gertrudis X Hereford crossed heifers. John Loughridge **Chatsworth** jaloughridge@aol.com 706-270-4518

Senepol bulls, ready for heavy service; young 1/2 Akaushi bulls, twelve cross heifers, 10 m/o. Roy Lee Strickland **Villa Rica** 770-459-5997

SimAngus & Charolais breeding-age bulls, 15 months plus, performance, calving ease. Scott Carey **Madison** 706-474-0738

SimAngus and Angus bulls, calving ease, good quality/good growth bulls: \$1700. Tested/ready-to-work, good EPDs, very gentle. Chet Barrett **Mount Airy** chetbarrett61@gmail.com 706-499-8008

SimAngus Bull, registered, 16 m/o, AI sired, semen-tested. Joseph Schmenk **Dahlonega** oakridgeranch@windstream.net 706-864-6659 317-965-8769

Simbrah and Simmental young bulls and heifers. Cliff Adams **Bowdon** 770-258-2069

Simmental bull and Simmental/SimAngus cows/heifers for sale; great EPDs. James Woodard 3061 Indian Creek Rd **Madison** 30650 jrwoodard8382@gmail.com 770-601-0492

Market Bulletin Subscription Request Form

The fee for an annual subscription to the Farmers and Consumers Market Bulletin is \$10 (26 issues). This includes both print and online access. If you do not wish to receive the printed version of the Market Bulletin by mail, please opt-out where indicated below.

New Subscriber Renewal _____ Subscriber Number

I do not wish to receive the Market Bulletin by mail. I will use my subscriber number to log on to agr.georgia.gov and read the digital version.

Name: _____

Address: _____

City: _____ State: _____ Zip: _____

Email address: _____

Phone number: _____

(We will use your email address only to inform you when a new digital issue is available on our website. We will only call if staff has a question about your subscription.)

Please make your check/money order payable to:
Georgia Department of Agriculture

Please mail your payment to:
Georgia Department of Agriculture
Attn: Market Bulletin
P.O. Box 742510
Atlanta, GA 30374

2nd Annual LAKE COUNTRY LIVESTOCK JUDGING INVITATIONAL

Saturday, March 9, 2019
at the Greene County Ag Expo Arena

Contest Check-in will begin at 9:30 a.m. and the contest will begin promptly at 10:00 a.m.!

This event is open to all 4-H and FFA members in the 4th - 12th Grade. Top 10 individuals from Junior and Senior divisions will receive certificates.

Prize money will be awarded to the Top 5 individuals from both divisions.

For registration forms and more information please contact David Daniel, Jr. or Kelcie Gilman at the Greene County Extension/4-H Office at 706-453-2083




AN EQUAL OPPORTUNITY, AFFIRMATIVE ACTION, VETERAN, DISABILITY INSTITUTION

GUEST COLUMN: 2019 legislative session promises positive change for rural Georgia



Photo courtesy Herb Pilcher

By David Bridges
Interim Director, Georgia's Rural Center
President, Abraham Baldwin Agricultural College

Aside from my parents, the single greatest influence on who I am and what I've been able to accomplish is this: I am from rural Georgia.

I realize that I am fortunate to have been brought up where and how I was brought up, and my roots are still firmly planted in the red dirt of Terrell County, just as they have been for the past six decades. That is why I consider it a tremendous honor and responsibility to lead the Center for Rural Prosperity and Innovation, or as our team calls it, Georgia's Rural Center. It is also the reason why I am reaching out to all rural Georgians to join the center, rural legislators and me in making this a historic year for rural people and the places they call home.

Hard work by Speaker Ralston, the Rural Development Council, the Georgia House of Representatives, the Georgia Senate and former Gov. Nathan Deal led to passage of HB951 during the last session. In addition to re-creating the Rural Development Council, the bill established Georgia's Rural Center and tasked it with facilitating innovation and economic development in rural Georgia. The center exists to reconnect rural and urban Georgia and reinvigorate once-vibrant places by re-creating proven, innovative business models and investing our state's most valuable resource – human capital – where it's needed most.

As the 2019 legislative session began Jan. 14 in Atlanta, Gov. Brian Kemp and rural legislators pledged to work on behalf of rural Georgians. The staff of Georgia's Rural Center and I are ready to tackle the challenges that face the people of Georgia's small towns and rural communities. I urge you to join our team.

If you've spent a lifetime in rural Georgia like me, you have undoubtedly noticed how the place you call home has changed over the past few decades. While I hope all Georgians share my pride in and appreciation of the economic upsurge our urban areas have enjoyed during this time, we are wise to recognize the geographical extent of that success. Outside the state's largest cities, the scene is a stark contrast.

Georgia's rural areas are faced with challenges distinct from other regions of this state: population loss, inadequate access to health care, disintegrating infrastructure, diminished opportunity for quality education, scarcity of employment opportunities, overall absence of economic growth and, sometimes, lack of cultural amenities.

Rural Center staff participated in all of the House Rural Development Council listening sessions across the state. We joined other rural leaders in sharing not just the challenges we see facing rural Georgia, but also potential solutions to those challenges.

As a result of these gatherings, the HRDC drafted a set of recommendations that will guide their efforts during the 2019 legislative session. Released in mid-December, the recommendations focus primarily on economic development, rural infrastructure and health care needs and reflect some of the most pressing obstacles to rural prosperity and innovation.

We anticipate that elected officials will work swiftly and precisely on the recommendations. Never in my recollection has there been such widely held support for rural people and places as there is in Georgia's Capitol right now – from both political parties and a broad range of public officials. The time to make specific, meaningful and positive change for rural Georgia is now.

I encourage you to play your part by reading the HRDC's legislative recommendations on our blog at www.ruralga.org/blog and keeping up with what is happening throughout the session on our Facebook page and blog. I urge you to contact your state representatives, Lt. Gov. Geoff Duncan and Gov. Brian Kemp and share with them your thoughts on rural issues and the efforts being made by our elected officials.

As a proud product of rural Georgia, I am certain that with the right approach, we will not only rediscover the power and potential of the state's less populated areas, but also redefine what it means to be rural in this state. It is time to reinvest in small towns and rural communities, and there's no better opportunity than while lawmakers are in Atlanta over the next few months. I hope you will join us in this vital work today.



Georgie's Drive thru Indian Springs

Hello! I'm Georgie, the Georgia Grown mascot. I travel the state promoting our No. 1 industry – agriculture! So much of what we do in agriculture depends on the weather, and more specifically on the arrival of spring. The other day I went to Dauset Trails Nature Center near Indian Springs to see someone who knows more than anybody about predicting spring's arrival: General Beauregard Lee, otherwise known as Georgia's Official Weather Prognosticator. Like his more famous cousin in Pennsylvania – Punxsutawney Phil – Beau draws lots of attention on Groundhog Day. The first official Groundhog Day was celebrated Feb. 2, 1887, at Gobbler's Knob in Punxsutawney, Pa. The weather on the second day of February has historically been seen as a predictor of the remainder of winter. The story goes that a groundhog emerging from his home under a clear sky would see his shadow. That would spook the marmot back into his den, meaning six more weeks of winter. But a cloudy day would not cause a fright-inducing silhouette, indicating an early spring. Georgia's own "Beau" looks to improve his 94 percent success rate predicting the first day of spring at a ceremony beginning at 7:30 a.m. Feb. 2. He has been prognosticating for the past 40 years and moved to his new home at Dauset Trails last January.

-Photo courtesy Dauset Trails Nature Center



COOK GEORGIA GROWN: Stuffed Collards

Ingredients:

14 collard green leaves, stems removed
1 lb. ground beef
1 cup cooked rice
1 cup tomato sauce
2 cloves garlic, minced
½ cup onion, finely diced
¼ cup bell pepper, finely diced
Salt and pepper, to taste
Pinch sugar
1 tsp. dried oregano

Preparation:

Preheat oven to 350 degrees Fahrenheit.
Blanche collard greens in pot of boiling water for about 1 minute, then shock in ice water to stop cooking and to retain color.
Combine beef, cooked rice, ½ cup tomato sauce, garlic, onion, bell peppers, salt and pepper, mixing well.
Use one whole collard leaf per roll, piecing two sides together if needed.
Place collard green on cutting board.

Place about ⅓ cup of filling on bottom third of leaf. Begin rolling by folding leaf over filling, making one turn, then fold sides in over roll. Continue rolling using whole leaf.

Place roll seam side down in baking dish. Continue with remaining leaves.
In a separate bowl, combine remaining sauce with sugar, oregano, salt and pepper. Pour sauce over collard green rolls, then bake for about 45 minutes.
Serves about 6.



FARMERS & CONSUMERS MARKET BULLETIN (ISSN 0889-5619)

is published biweekly by the Georgia Department of Agriculture
19 Martin Luther King Jr. Drive
Atlanta, GA 30334-4250
404-656-3722 • Fax 404-463-4389
Office hours 8 a.m. to 4:30 p.m. Monday – Friday

Gary W. Black, Commissioner MARKET BULLETIN STAFF

Julie McPeake, **Chief Communication Officer**
Amy H. Carter, **Editor**
Lee Lancaster, **Contributing Writer**
Erin Burnett, **Creative Projects Specialist**
Terrell Davis, **Media Specialist**

Subscriptions to the Farmers and Consumers Market Bulletin are \$10 per year. To start or renew a subscription, go to our website to pay by Visa or MasterCard, or send a check payable to the Georgia Department of Agriculture along with your name, complete mailing address and phone number to PO Box 742510 Atlanta, GA 30374-2510. Designate "Market Bulletin" in the "for" line. To determine if an existing subscription is due for renewal, look for the expiration date on the mailing address label on page 1. Postmaster: Send address changes to 19 Martin Luther King Jr. Drive, Atlanta, 30334.

The Department does not discriminate on the basis of sex, race, color, national origin, age or disability in the admission or access to, or treatment in, its employment policy, programs or activities. The Department's Administration Division coordinates compliance with the non-discrimination requirements contained in Section 35.107 of the Department of Justice Regulations. Information concerning the provisions of the Americans with Disabilities Act, and the rights provided thereunder, are available from this division. If you require special assistance in utilizing our services, please contact us.

Wood ash from winter fires can be added to garden soil in moderation

By Sharon Dowdy

Many Georgia families enjoy building roaring fires in their fireplaces or wood-burning stoves during the winter. Whether as a source of heat or for enjoyment, when the flames die down, a pile of wood ash remains.

University of Georgia Cooperative Extension agents get calls this time of year from gardeners asking if they can add wood ash to their garden plots. UGA Extension Consumer Vegetable Specialist Bob Westerfield says the answer is “yes, but in moderation.”

“At the end of the day, ashes are a source of nutrients; primarily potassium or potash,” he said. “You can add wood ash to your garden and get the soil to a level where it’s good for your vegetables, but the problem is adding too much.”

This potash is a stable nutrient, so it doesn’t “go away quickly” from the soil once you add it, he said.

Adding wood ash to a garden plot also adds calcium and magnesium to the soil, similar to applying lime. Like lime, this will increase the pH level in your soil, Westerfield added.

“Again, once the pH hits a proper level and you have a slightly acidic soil, if you keep throwing ashes out there it’s just going to skyrocket the pH. Your soil will end up going the other direction and become too basic,” he said. “Your vegetable plants will start to yellow because the plants will no longer be able to absorb the nitrogen. They essentially begin to starve themselves to death.”

Slightly acid soil at a pH level of 6.5-6.8 is perfect for most vegetables and ornamentals.

When too much wood ash is added to the soil, the pH will “jump up,” nutrients can get out of balance and the roots can’t absorb the nutrients.

To safely add wood ash to your home vegetable garden, Westerfield recommends adding no more than five pounds of wood ash per 1,000 square feet per year. To check the pH level, take a soil sample to your local UGA Extension office and have the soil tested every two years.

“The soil test will tell you the pH level and if you are at a level where you need to hold off on adding more wood ash,” Westerfield said.

Wood ash should not be added to compost piles.

“Compost needs an acidic environment. The wood ash may slow down the microbes,” he said. “This is also why UGA Extension agents and specialists say not to add lime to your compost pile. You can add a little fertilizer, though.”

-Sharon Dowdy is a news editor with the University of Georgia College of Agricultural and Environmental Sciences.



Kel-Mac Saddle Club members Lisa Sprietsma, Daisy Jane Buck, Kelsea Craft and Annie Breedlove riding Maize, Nate, Winn-Dixie and Trucker.

Kel-Mac Saddle Club horse shows raise thousands for charity

The Kel-Mac Saddle Club in Morgan County has set the schedule for its annual slate of horse shows benefitting charitable causes. Since its founding 43 years ago, the club has donated more than \$150,000 to the community. Recipients of the proceeds from the club’s 2018 shows included the Georgia Equine Rescue League, the Morgan County Sheriff’s Empty Stocking Fund and the equestrian facilities at county and state parks such as A. H. Stephens, Hard Labor Creek and Watson Mill Bridge and Heritage Park.

Shows are open to equestrians of all ages and levels of experience. Classes include hunter/jumper, western, gaited, trail obstacles, halter/showmanship, beginner, open, costume contests and much more.

Show dates for 2019 are April 6, May 11, Sept. 21 and Oct. 12. All shows are held at the Morgan County Agricultural Center, 2380 Athens Hwy (441), Madison, GA 30650. For more information go to Facebook, Kel-Mac.com or call Show Chair Susie Cottongim at 706.342.3775.

Georgia Crisis & Access Line

1-800-715-4225

mygcal.com

61st

Tifton

Bull Evaluation

Selling 85 Bulls!

Angus • Charolais • Hereford • Red Angus • SimAngus • Simmental

Wednesday, March 6, 2019 • 12:30 p.m. • Irwinville, Ga.

Auctioneer: Carroll T. Cannon
GAL #249 • 229-881-0721

For more information, contact:
UGA Beef Team 229-386-3214
jacobs@uga.edu Georgia Cattlemen's Association 478-474-6560

Catalog Available Online at ugabeef.com | Videos Available 2 Weeks Prior to Sale
2283 GA Hwy 32 W | Chula, GA | 31733

The Food Safety Modernization Act
Produce Safety Rule has already gone into effect.

Are you rule ready?

VISIT GEORGIAFARMSAFETY.COM
TO SEE IF YOU'RE COVERED

Visit us online today to find your compliance dates.

FARM SAFETY

@GDAFoodSafety

@gdafoodsafety

Funding for this statement, publication, press release, etc. was made possible, in part, by the Food and Drug Administration through grant PAR-16-137. The views expressed in written materials or publications and by speakers and moderators do not necessarily reflect the official policies of the Department of Health and Human Services; nor does any mention of trade names, commercial practices, or organization imply endorsement by the United States Government.

Three mixed calves, one bull, two steers 500-600 pounds, good condition. Make reasonable offers. Rickey Dudley **Leesburg** 229-347-0751

Two 9 m/o Brahman bull calves; \$700 each. Parents on site. Full blood. Kelly King 4622 Pine View Rd **Waycross** 31503 229-740-8580

Swine

If you have questions regarding ads in this category, call 404-656-3722.

Advertisers submitting swine ads must submit proof of a negative brucellosis and pseudorabies test from within the past 30 days. Exceptions are swine from a validated brucellosis-free and qualified pseudorabies-free herd; these operations must submit proof of that certification. If you are faxing or mailing in an ad, the test needs to be sent along with it. For ads submitted online, the test can be attached using the attachments button. Buyers are urged to request proof of a negative brucellosis and pseudorabies test prior to purchase.

Berkshire pigs, males, cut, wormed and eating good: \$50 each. Morris Jennings **Cumming** 770-887-6663 770-401-5263

Mangalitsa piglets for sale, born 12/4; \$325 a piece. David Cork **Statesboro** 912-690-5587

Pigs: Landrace-Yorkshire cross, 11 w/o, 60 to 70 lbs., farm-raised: \$60. Good feeders or breeding stock. Roy Callaway **Carlton** 706-207-9444

Yorkshire hog, 2 y/o, 450-475 lbs: \$300. Denise Wheeler **Sharpsburg** 404-314-5450

Goats And Sheep

If you have questions regarding ads in this category, call 404-656-3722.

2 White Dorper 3 y/o rams for sale; visit creeksidesheep.org. John Pope **Forsyth** 478-955-6550

4 Nigerian Dwarf wethers, Boer Nigerian cross wethers, Boer Nigerian billy; all 9 m/o, \$70 each. Pat Daniel **Warthen** 478-456-5535

4 y/o Boer mix wether: \$250. Big and friendly. Emily **Macon** 478-957-6264

5 bred Nubian goats, spotted Nubian male; \$125 and up. Bonnie Eubanks **Sandersville** 478-456-6606

5 Nigerian Dwarf nannies, one has a kid by her side: \$650 for the group or \$150 ea. Scott Willoughby **Watkinsville** 706-818-3171

9 m/o doeling: 3/4 Lamancha, 1/4 Toggenburg, from good milking stock; \$125. Joyce Reid **Carrollton** 770-854-7143

Blue-eyed Nigerian Dwarfs and Nubian x Nigerian Dwarfs babies to one y/o; UTD shots, disbudded, many colors. Debi Shell **Lenox** njshell@live.com 229-546-4404 229-531-3661

Fainting billy goat, \$200. Baby pygmy males, \$50, and females, \$100; great markings. Shelley Kegley **Villa Rica** 770-789-0209

Herd sire Nubian buck: \$400. ADGA registered American Nubian A/A alpha S1 casein allele; 15 percent more milk. Michael Battey **Lindale** 727-480-3288

Katahdin rams, not registered, born April 2018. Will average 100+ lbs. \$2 per pound with scale on site. Carmen Smith **Collins** 912-403-2215

Katahdin sheep for sale, breeding stock and freezer lambs. Call for pricing. Jonathon Tatum **Athens** 478-290-5967

Kiko x Boer crossed Nubian doelings, born Oct. 11th; big, beautiful girls: \$140 ea. S Liford **Canton** 678-521-8689

Nigerian Dwarf Goats, registered ADGA, AGA, NDGA; buck and doe, six m/o. Filix Austin **Jefferson** 706-654-1019

Nubian buck: very nice, registered 3 y/o, tri-color with moon spots: \$350. Rachel Winkles **Pine Mountain** 706-302-2728

Nubian doelings/bucklings, born Jan 4th, 10th and 11th; parents ADGA registered: \$175 each, \$195 with papers. Ereik Mimms **Alpharetta** 678-283-4355

One Nigerian dwarf male with papers, debudded, DOB 04-25-18: \$150. One doe reg., DOB 02-14-18: \$200. V Carter **Forsyth** 478-993-2119

Purebred Kiko does, 7-12 m/o; \$200. Purebred and 100 percent NZ bucks, 1-3 y/o; \$200-\$1,000. Gregory Slappey **Carrollton** 678-773-4093

Pygmy goats: Bucks, does & wethers available; all wormed, does probably bred: \$75 and up. Mckinley Evans **Adairsville** 678-276-5127

Reg. full blood Dorper rams. 10 m/o, high quality, excellent bloodlines; will make great herd sires. Ken Durden **Lynons** bardfarmshairsheep@gmail.com 912-403-9457 912-245-8128

Registered Katahdin rams and ewes, from weaning to breeding age, x-large Midwest bloodlines. Duke Burgess **Louisville** 478-625-9542 305-923-0262

Stock Dogs

If you have questions regarding ads in this category, call 404-656-3722.

Advertisers must submit a copy of a current Rabies Vaccination Certificate signed by a licensed veterinarian for dogs 12 weeks and older. Ads submitted without this information will not be published.

AKC German Shepherd pups, ready to go 1/18/2019: \$750. Scott Guyton **Gainesville** 770-654-3677

Anatolian puppies from proven working stock, parents on site, UTD vaccines, available now. Chuck Cayton **Tifton** 229-392-0650

Border Collie puppies, turning 6 w/o Jan. 23rd, working parents. Roger Durnagan **Murrayville** 706-300-0134

Great Pyrenees puppies, born 11/7/18, second shots, 6 males, \$300 each; parents on farm. Ricky Yarbrough **Gray** 478-986-4129

Kangal livestock guardian dog, registered male, stud service fee: \$2,000. T Eleanor Davis **Stockbridge** e@peacockhill.farm 770-860-8989

Kangal livestock guardian puppies \$1,600. 10 months old, shots/dewormed, around goats and turkeys. Thora Davis **Stockbridge** 770-860-8989

Livestock guardians: Registered Anatolian Shepherds, 12/27/18: 6 females, 4 males. Brindles, pintos, fawn/wht \$1000. Robin Valentine **Calhoun** 770-314-2609

Wanted: young Old English sheepdog, as pet. Marilyn Tuley **Marietta** mtuley1@bellsouth.net 678-560-1496

Working Line Czech German Shepherd puppies: fantastic guards/protection/herders, import sire, AKC, ready 3/1/19. Lynn Schlup **Tennille** 478-552-1119

Equine For Sale

If you have questions regarding ads in this category, call 404-656-3722.

Advertisers in the Equine for Sale or Equine at Stud categories must submit current negative Coggins tests for each equine advertised. This includes horses, ponies, donkeys, etc. Buyers are urged to request verification of a negative Coggins from the advertiser before purchasing any equine. Negative Coggins reports are valid for 12 months from the date the blood sample is drawn. Falsification or altering of any Coggins results can result in fines and suspension of advertising privileges. If you are faxing or mailing in an ad, the Coggins needs to be sent along with it. For ads submitted online, the Coggins can be attached using the attachments button. Generalized ads, such as "many horses," "variety to choose from," etc., will not be published. Equine at Stud ads will also require a current stable license in order to be published.

Jenny, 5 y/o, good companion, pet or guard donkey: \$250. Can deliver. Wynn Copelan **Greensboro** 706-453-7687

Looking for free miniature horses, miniature ponies and donkeys. Billy Montgomery **Homer** 678-591-6410

Miniature horse, mare, has been running with miniature stud: \$400. Jackie Copelan **Madison** 706-474-5066

Pony mare, 3 y/o, Sorrell white paint, extra gentle, rides, 9 hands: \$700, can deliver. Janice Wilkes **Athens** 706-207-9366

Reg. thoroughbred broodmare, beautiful, grey, 16 hands, correct and top bloodlines. For lease or for sale w/ options. G Gibson **Atlanta** 678-595-2790

Rocky Mountain mare, 15.1 hands, 1050 pounds, chocolate with white snip and bob tail, requires experienced rider: asking \$1800. Sammy Stephens **Clermont** 770-287-2704

Equine At Stud

If you have questions regarding ads in this category, call 404-656-3722.

Equine Miscellaneous

If you have questions regarding ads in this category, call 404-656-3722.

2000 Sundowner gooseneck 3 horse slant, large dressing room with air, one owner, excellent condition: \$10,000 OBO. Mary Ann Topper **Dawsonville** 706-216-6807

2001 Calico 3H SL stock gooseneck with tack room; great pulling trailer: \$3600 OBO. Scott Hawks **Nicholson** 706-207-7614

Chaparral horse trailer: two-horse, bumper pull, excellent condition; \$3250. Dr. Hancock **Lawrenceville** 770-289-2086

Good used Western saddles, like new: 16" Thunder Canyon roping, \$495; 17" Dixie roper, \$300. Willie Coggins **Flowery Branch** 770-500-9318

Horse hay round bale feeder ring, used, good shape; \$75. Melanie Heard **Tignall** 706-359-6973

Horse trailer: Featherlite 4HGL, all aluminum, 52" short-wall dressing room, like new. Larry Wilson **Grovetown** 706-651-9505

Ortho-Flex stitchdown saddle, black, purple booties, 15.5", plus accessories; Tucker GEN II, 16": \$1000 ea. OBO. Beverly Byrd **Leesburg** 229-886-5545

Silver show saddle and bridle; \$1,200. Grooming items, bits, leg wraps and stable blankets. Patti McLeroy **Kathleen** tmcleroy@windstream.net 478-987-0019

Vintage Big Horn leather saddle, 16", good condition, a heavy duty saddle: \$425. Jim **Auburn** 404-710-4596

Boarding Facilities

If you have questions regarding ads in this category, call 404-656-3722.

Advertisers must submit a current stable license in order to advertise boarding and breeding facilities. Ads submitted without this information will not be published. For questions regarding licenses and applications, call 404-656-3713.

Full care paddock board. Individualized grain meals, hands on. Owner on property: \$250-\$350/month. Annetta Coleman **Suches** 678-936-8087

Pasture boarding with arena, round pen, wash rack, tack room, trailer parking and trails near Hampton and McDonough on Hwy. 81. Dan Robertson **Stockbridge** dmrobertsn@aol.com 678-300-3434



Public Notice by Georgia Pork Producers Association and the National Pork Board

The election of pork producer delegate candidates for the 2020 National Pork Producers (Pork Act) Delegate Body will take place at 1 p.m. Tuesday, Feb. 19, 2019, in conjunction with a Board of Directors meeting of Georgia Pork Producers Association in the auditorium of the Georgia Farm Bureau building in Macon. All Georgia pork producers are invited to attend.

Any producer age 18 or older who is a resident of the state and has paid all assessments due may be considered as a delegate candidate and/or participate in the election. All eligible producers are encouraged to bring with them a sales receipt proving that hogs were sold in their name and the checkoff deducted. For more information, contact Georgia Pork Producers Association, P.O. Box 1566, Bainbridge, Ga., telephone 1.229.246.8297.

Poultry/Fowl For Sale

If you have any questions regarding ads in this category, call 404-656-3722.

Mallard ducks must be at least three generations removed from the wild before they can be advertised. Advertisers must include this information in ads, or they will not be published.

10 Barred Rock and Rhode Island Red roosters for sale: \$15 each. Cody Guyton **Gainesville** 678-617-1036

12 varieties peafowl: game chickens, redquill, warhorse, minor blue mugs, orangequill, pumpkin hulse, grey hatch, brown reds, kelso splash. Ray Watts **Macon** 478-361-3468

18-24 m/o laying hens, approx. 250-300, Hyline, Golden Comet; \$3 each, 50 minimum. Jeffrey Anthony **Stockbridge** 678-358-8937

2 bronze hens and 1 tom, born in April. Ty & AJ Hayes **Tallapoosa** 404-567-1192

2 incubators holds 41 eggs, automatic egg turners; \$50 each. Jerry Atkins **Dublin** 478-279-1163

2 Khaki Campbell female ducks for sale: \$20 each. John Peter **Snellville** 917-327-9839

2018 turkeys, mixed breeds, toms and hens: \$40 ea. Three or more, \$30 ea. Harry Propes **Flowery Branch** 770-855-5124

26 homing pigeons, nice birds, no white: \$5/ea. Daniel Ivy **Canton** 770-479-6647

4 Buff Orpington roosters, 8 m/o: \$10 ea. or all for \$30. Larry Manley **Eatonton** 706-473-0967

5 turkeys; \$50 each. 7 ducks; \$15 each. 3 Appleyard; \$60. Ernest Presley **Macon** 478-284-9265

Ameraucana laying hens: \$15 ea. James Young **Metter** 912-682-2917

Baby chicks, \$1 ea.: Rhode Island reds, golden cornish, red stars, turken. Gary Ridley **Lafayette** 706-638-1911

Baby chicks: American Dominique, Buff Orpington and Rhode Island Red. Pure breeds, hatching every three weeks. Monte Poitevint **Lakeland** 229-482-3854

Barred rocks, Rhode Island whites, 8 w/o: \$5 each. Black copper maran roosters, \$15 each. Clayton Johnson **Jasper** 706-253-2258

Black Roundheads, selling out, roosters and hens. Sarah Terrell **Bowman** 443-523-6143

Blues, Murphy Hatch. Ronald L Shepard **Fortson** 706-317-9924

Bobwhite quail, flight conditioned. Larry Corbin **Fayetteville** flntriverstore50@yahoo.com 770-527-1988

Breeding age peahens: 1 Cameo & 1 IB BS split bronze. All laid last year. Mary Clark **Newborn** paints200@aol.com 770-919-7759

Chicks sexed and unsexed; ducks, baby and adult, assorted breeds; also, Ayam Cemani. Sherry Amerson - White **Augusta** blackberrycreekminifarm@gmail.com 706-833-5535

Chinese Weeder Geese, mature adults; 7 females and 2 males: \$30 each. Silas Frantz **Cleveland** 706-865-0998

English Lavender Orpingtons, one rooster and four hens; \$85. Lamar Page **Fairmount** 678-986-4153

For Sale: Sebricht Bantum Chickens. William Nesbitt **Smyrna** 770-432-3406 678-467-4484

Four Toulouse geese to a good home, 18 m/o. Harris Peddy **Leesburg** 229-809-2062

Golden Comet laying hens, 2 y/o; no calls after 8 pm. Kenneth Cook **Dallas** 770-231-4632

Heritage breed turkeys, 2 weeks old, parents free range woods; \$20. Don Meyer **Stockbridge** e@peacockhill.com 770-860-8989

Male peacock, 3 y/o; 1 male peacock, 2 y/o. Call before 9 p.m. Jack Wheeler **Covington** twowheeler@mindspring.com 770-787-1814

Murray McMurray grown hens, \$20 ea. Can text pics. Gloria Malcom **Social Circle** 770-464-4303

Peking ducks. Large. Good for eating and eggs. \$13.00 each. Text/call. Jennifer Sandjaja **Milledgeville** 478-206-7957 478-251-9260

Pigeons: Hubbell White Kings, White Carneau from Palmetto Pigeon Plant Stock.Young Breeders. Jerry Williamson **Dexter** 478-290-1122

Market Bulletin Ad Form

This form may be used to submit an ad. There is a 20-word limit for advertisements unless otherwise noted under category headings. The 20-word limit includes name, city, phone number and complete address, if provided. *Market Bulletin* staff reserves the right to edit notices exceeding the word limit. Only one notice per subscriber per issue. In order to advertise in the *Bulletin*, you must be a paid subscriber with a current subscription.

Category: _____

Please note some categories are not published regularly. In addition, some categories require documentation, such as a Coggins test or organic certification, prior to being published.

Phone number: _____

Subscriber number: _____

Please include your name and full address on all correspondence sent to the *Bulletin* office. The following statement must be signed by the advertiser submitting this notice for publication:

I hereby certify that the above notice meets all the necessary requirements for publication in the *Farmers and Consumers Market Bulletin*.

Please mail ads separate from subscription payments. Ads should be mailed to Georgia Department of Agriculture, Attention: Market Bulletin, 19 Martin Luther King Jr. Drive SW, Atlanta, GA 30334.

Pigeons: white rollers, Turner rollers, colored rollers and white homers; \$20/ pair. Wyatt Johnson **Midville** 478-494-3240

Pullets: Rhode Island Red, Golden Comets and Black Sex link. Quality birds. Brian Sturdy **Dahlongega** 706-865-9201

Silver Sebrights from show stock: \$50/ pair. Clarence Whatley 114 L St NW **Thomaston** 30286 706-647-5122

Poultry/Fowl Requiring Permit/License

If you have questions regarding this category, call 404-656-3722.

Advertisers selling wood ducks must submit a USDA permit with their ad. Ads for wood ducks that do not have this permit will not be published. For information on these permits, call the US Fish & Wildlife Service Atlanta office at 404-679-7319. Advertisers selling quail must be accompanied by a copy of the commercial quail breeder's license. Ads for quail that do not have this license will not be published. For information on these licenses, call the Georgia Department of Natural Resources Wildlife Resources Division at 770-918-6401. If you are faxing or mailing in an ad, the permit/license needs to be sent along with it. For ads submitted online, the permit/license can be attached using the attachments button.

Bobwhite quail. Lamar Cook **Hinesville** 912-271-9757

Bobwhite/Coturnix quail eggs: \$90/100; \$170/500; \$320/1000. Willie Strickland **Pooler** 912-748-5769

Poultry/Fowl Wanted

Wanted: 5 or 6 good young layers (18 to 24 w/o). Phil Pruitt **Covington** 770-786-3320 770-597-2934

Wanted: blue slate turkey hens, to buy or trade. Annette Combs **Hephzibah** 706-871-2656

Wanted: Peahen in Madison area. Philip Wood **Madison** 706-342-5977

ALTERNATIVE LIVESTOCK

If you have questions regarding this category, call 404-656-3722.

Alternative Livestock Requiring Permit/License

If you have questions regarding ads in this category, call 404-656-3722.

Advertisers selling fallow deer, axis deer, sika deer, elk, red deer, reindeer and caribou must submit a current deer farming license with their ads. Ads submitted without this license will not be published. If you are faxing or mailing in an ad, the license needs to be sent along with it. For ads submitted online, the license can be attached using the attachments button. For information about the deer farming license, contact the Georgia Department of Agriculture at 404-656-3667. For information on other hoofed stock, excluding llamas and buffalo, contact the Georgia Department of Natural Resources at 770-761-3044.

LIVESTOCK WANTED

If you have questions regarding ads in this category, call 404-656-3722.

LIVESTOCK HANDLING

If you have questions regarding ads in this category, call 404-656-3722.

'88 16 foot gooseneck stock trailer, great condition, ready to haul. Sherrie Liford **Canton** 678-521-8689

16 ft. cattle trailer, middle gate, escape door, rusty metal: \$575. Don Helm **Covington** 770-786-6503

16' BP stock trailer, storage compartment in front, lights work, solid floor, divide gate: \$2000. Robert Smith **Washington** 706-302-4503

1998 16ft Supreme cattle trailer, barn-kept with center gate; \$2500. Lee Roy Shepherd **Taylorsville** 404-379-4180

24ft CM brand aluminum stock trailer, brand new, never used: \$15,500. Charles Mathis **Nicholson** 404-317-6173

Alleys, tubs/sweeps, bow gates, bud boxes, complete systems custom-made, delivered and set up. Randy Floyd **Hartwell** 706-318-9468

Behlen polytuff creep feeder, 1200# capacity, good condition: \$500. C. C. Chandler **Tallapoosa** 770-508-7093

Goat/cattle slide-in rack, fits 8' pick up bed. Great condition. 8' x 5' high. Alvah Adams **Byron** alvahadamsjr@aol.com 478-956-5843

Hay ring, made by Tarter, galvanized, VGC: \$50. Mickey Hilliard **Baldwin** 706-949-0197

Heavy duty 4-section show pig hauling box, fits short-bed pickup: \$250. Ronald Coody **Quitman** 229-263-7487

RABBITS

If you have questions regarding ads in this category, call 404-656-3722.

Pedigree Florida whites, born 10-1-18; 3 males. Wesley Smith **Athens** 706-247-5254

FEED, HAY AND GRAIN

If you have questions regarding ads in this category, call 404-656-3722.

All feed, hay and grain ads must include the variety offered for sale. Ads for mulch hay will not be accepted in this category; they will be published in the Fertilizers & Mulches category.

\$35 to \$45: 2018 4x5 rolls Fescue hay, excellent quality, stored inside and out; quantity discounts. Charles Woodward **Covington** 678-725-2292

'17 4x5 Bahia/mixed grass rolls; 28 rolls left over from 2017: \$10 a roll. Robert **Lyons** 912-805-1583

'18 Tift 85, 4x5 net wrapped, horse and cow hay, UGA tested priced, according to quality; \$40-55. Nick Wingate **Waynesboro** 706-910-2184

'18 5x6 high quality netwrapped bermuda hay in barn: \$40. 500 bales available. Chuck Yawn **Hazlehurst** 912-209-1505

'18 Alicia bermuda hay, excellent quality square bales, UGA tested, 21% protein, 140.3 RFQ. Danny Fausett **Dawsonville** 706-974-5718 706-265-8432

'18 Bahiagrass, 4x5.5, fertilized, wrapped, sheltered, 75+bales: \$50/ bale; 10+@\$45; 20+@\$40/bale. Delivery negotiable. Wayne Pruitt **Statesboro** 912-682-4481

'18 bermuda Alicia, 4x5 rolls, net-wrapped, UGA tested for nutrients, covered. Delivery available. David Hardin **Fitzgerald** 229-425-8667

'18 bermuda/mix, square, horse-quality, barn-stored: \$5.50. Doris Cherry **Bowman** d.westcherry@gmail.com 678-429-2450

'18 Fescue/bermuda and mixed grasses, sq. bales, rain-free, barn-stored: \$6. Volume discount. Jim Robinson **Good Hope** 770-363-6406

'18 Russell Bermudagrass, 4x5.5, fertilized, wrapped, sheltered, HQ, 200+ bales: \$60/bale; 10+ @ \$55; 20+ @ \$50/bale. Delivery negotiable. Wayne Pruitt **Statesboro** 912-682-4481

'18 Tift bermuda 44 hay, horse-quality, well fertilized, barn-stored: \$5.50 per bale. Jerry Johnson **Jefferson** 706-367-2040

'18 Tift bermuda 44, horse quality, well fertilized and sprayed for weeds: \$5 per bale. Ken Owens **Monroe** 770-267-8759

20 round bales, 4x5.5 with fertilizer; \$50 each. Dupree & Co. Timothy Dupree **Sandersville** 478-232-7590

2018 4x5 mixed grass hay, stored in barn: \$35/bale. Sam Standard **Jackson** 770-362-0475

2018 4x5 rolls, bermuda/Fescue, limed, fertilized, sheltered, 24 bales; \$35 bale. Claude Harman **Greenville** 706-672-4717

2018 Alicia bermuda hay, 5x5 rolls, tied with twine: \$40 ea.; small square bales, \$5 ea. Gregory Miliner **Bluffton** 229-254-0729

2018 bermuda Fescue hay, horse quality; \$5 square bales, in barn. Nancy B Harris **Winder** 770-867-0733

2018 bermuda hay, 5'x6' rolls, net-wrapped, weed-free, fertilized, stored outside: \$45; 2017 for \$25. Stevie Duncan **Royston** 706-498-2099

2018 bermuda mix hay, fertilized and barn stored: \$4.50/bale. Steve Matthews **Griffin** 404-631-1769

2018 bermuda/Fescue hay for sale, fertilized/net-wrapped; large quantity discount: \$30 for 4x6 rolls. Mark Shepherd **Rutledge** 706-318-2609

2018 bermuda/Fescue mixed, 4x5 rolls, fertilized, rain-free, in barn; \$40-\$50 per roll. Mike Keesee **Monroe** 478-899-9668

2018 Coastal and Russell hay for sale, 4x5 rolls, horse and cow quality. Kelly Hart **Guyton** 912-414-5744

2018 Coastal bermuda hay, 4x5 round and square bales. Larry Morgan **Lizella** 478-972-5977 478-781-1990

2018 Coastal bermuda hay, highly fertilized, weed free, rain free. Square bales; \$4.50. Rolls \$40 to \$45 each. Curtis Durden **Lyons** 912-245-1081

2018 Coastal bermuda or rye grass. Horse quality, fertilized UGA soil/specs. Baled square/4x5 round bales. Round; \$25 and up. Olin Trammell **Forsyth** 478-960-7239 478-994-6463

2018 Coastal bermuda, 4x5 net-wrapped rolls and square bales, horse quality, fertilized/limed per UGA, delivery available. Mike Dubose **Junction City** 706-366-1665

2018 Coastal bermuda, horse-quality, fertilized, limed, net-wrapped, sheltered, 4x5 tight bales; \$60. Grace Brady **Hephzibah** 706-231-0985 706-231-8563

2018 Coastal bermuda, lime-fertilized: \$5 square bales at barn. Winford Jackson **Newnan** 678-580-9950

2018 Coastal bermuda/Fescue mix hay, square bales, rain-free: \$4. Patrick Broder **Stockbridge** 404-401-6134

2018 cow hay bermuda mix. 4x5 rolls twine wrap; \$35/roll. Also mulch hay available. Jake Gower **Covington** 404-391-6182

2018 Fescue and mixed grass hay; \$4.50 per bale at barn. Wade Cown **Monroe** 770-207-6983

2018 Fescue mixed hay, 4x5 twine wrapped, stored outside, F.O.B.; \$25 Robert Pennington **Madison** 706-474-0710

2018 Fescue mixed, 4x5, net-wrapped, in barn, fertilized and limed: \$40. Edward Holmes **Dallas** 404-372-7734

2018 Fescue, 4x5 netwrapped in barn, fertilized and limed: horse, \$50; cow, \$35. Can deliver. Kenneth Bagwell **Cumming** bagwell66@gmail.com 770-616-8268

2018 Fescue-mixed hay, 4x5, twine-wrapped, stored outside. Robert Pennington **Madison** 706-474-3150

2018 Fescue-square bales, \$5/bale, horse-quality, stored in barn, sprayed and fertilized, Debbie Roseberry-Odom **Murrayville** 305-304-5878

2018 Fescue/bermuda mix hay, 4x5 net-wrapped rolls, fertilized, stored inside and outside. Glen Whitley **Bethlehem** 770-307-7098

2018 Fescue/bermuda mixed, horse-quality, net-wrapped; \$50-60/inside, \$35-40/outside. Coy Baker **Loganville** 770-466-4609

2018 good horse and cow hay; net-wrapped, 4x6 rolls, fertilized bermuda/Bahia; will load, no delivery. George Davis **Rutledge** 706-818-2025

2018 Hay, Coastal Bermuda/Bahia, 4x5 net wrapped. RFQ tested. Barn and field stored. \$35-\$40. Phil Amos **Louisville** 706-260-8720

2018 high-quality, well-fertilized, weed-free Tift 85 hay, net-wrapped in barn: \$40 for 10 or more. Delivery available. Square bales: \$5/bale. Tim Jarriel **Collins** 912-614-5595

2018 mixed bermuda hay and also ryegrass hay, 4x5 netwrapped and barn kept: \$35. Chad Duck **Braselton** 706-654-8605

2018 mixed grass 4x5 bales, twine-tied, good cattle/goat hay: \$35/bale at farm. R Gilbert **Bishop** 706-769-5820 706-296-4360

2018 net-wrapped bermuda and Bahia mixed hay. Just cut. \$40 bales. Delivery available. Brad Macdonald **Waverly Hall** 770-826-8299 706-582-3530

2018 peanut hay, 4x6 rolls: \$40/roll at barn, delivery available. Glenn Brinson 1800 Corsey Grove Way **Tarrytown** 30470 912-288-5960

2018 peanut hay, high protein, 4x5 rolls, sheltered. \$35, picked up. Local delivery available. Mike Holliday **Pitts** 229-938-8656

2018 quality hay, JD netwrapped, 1000 lb. rolls; \$50. 2017 hay, \$35 per roll. Jeff Bacon **Dudley** 478-875-3918 478-697-0485

2018 rain-free, barn-kept, horse/cow ryegrass hay, net-wrapped; \$50/roll. Brian Ogletree **Milner** 404-535-8511

2018 rolled Alicia hay, cow-feed quality; 100 plus rolls, 4ft. x 4ft; \$25/roll. Keith Yawn **Hazlehurst** 912-375-7743 912-539-0262

2018 Russell bermuda 1000# round bales; fertilized, wrapped and sheltered: \$55. J Kassler **Grantville** 404-402-8096

2018 square bales mulch hay; \$2.50/ bale. Harry Hughes **Warm Springs** 706-655-2475

2018 Tift bermuda hay, square and round horse-quality, stored in barn; delivery available. Dick Stratton **Locust Grove** 770-842-9317

2018 wheat straw, around 600 bales left: \$5 per bale. Jared Cook **Locust Grove** 770-616-6105

2019 Coastal Bermuda hay, dry, stored in barn. 4x5 rolls; \$50. Tim Hunter **Conyers** 770-331-7749

4x5 large rolls hay: Fescue, \$35; bermuda, \$45; in barn, limed & fertilized, rain-free, will load. Darrell Mullins **Rutledge** 706-474-8345

4x5 net-wrapped 2018 bermuda hay, truckload sale: \$30 ea. Delivery available. David Clemens **Waynesboro** 706-466-2944

4x5 net-wrapped bales, Alicia hay, kept dry in barn, 200 rolls; \$40-\$50 each. Jerry South **Martin** 706-491-4006

4x5 rolls, mixed grass, good horse quality, inside. Joe Cronan **Mcdonough** 770-235-3586

4x5, inside, well-fertilized. George Eckerd **Lafayette** geck30728@yahoo.com 706-539-1512 423-488-0644

4x6 tight wrapped round bales, rye/clover mix, Coastal/crab mix: \$55. Mixed cow hay: \$37. Dave **Atlanta** 770-354-2085

800+ Coastal bermuda bales, 4x5 rolls: cow hay, \$35; horse hay, \$55; peanut hay, \$40. We can deliver. Dannie Gingrich **Metter** 912-314-9568

Alfalfa sq. bales; \$10. Alfalfa rolls; \$75. Fescue/orchard rolls; \$45. Fescue/orchard sq. bales; \$5. Fescue rolls; \$30. Dale Hall **Calhoun** 706-506-0351

Bermuda mixed hay ,heavily fert, rain-free, horse quality: square, \$7; round, \$50. Large qty. delivery available. Stephen Stana **Carrollton** 770-241-3201

Bermuda, \$6/bale. Fescue, \$5/bale. Randy Gullebeau **Monroe** 770-316-8715

Bermuda/Fescue mix, premium round rolls, stored dry, net wrapped, excellent quality: horse, \$50; cattle, \$35. Sherrel Astin **Villa Rica** 30180 678-794-0880

Coastal bermuda hay, 4x5.5 bales, excellent quality, barn-stored. Bruce Parker **Butler** 478-214-0473

Coastal bermuda mix hay, 4x4 rolls stored outside: 2018 hay, \$25/roll; 2017 hay, \$15/roll. Andre Barlow **Grantville** 706-302-7658

Crab grass hay, 5'x4' bales. Leo Perfect **Unadilla** 478-955-2362

Fescue mixed round bales, 4x5: \$35 under tarp, \$45 in barn. Steve Arnold **Nicholson** 706-207-4356

Hay rolls: 4x4, \$30; 4x5, \$40. Discount for more than 10. You pick up. Kim Berry **Monticello** 770-789-2826

Large bales Fescue hay, kept dry; \$6 per bale. Graham Lenore **Murrayville** 770-654-2737

Large quantity square bermuda hay, round hay and haylage. Large quantity round peanut hay. Paul Harris **Odum** 912-294-2470

Large round rolls of hay available in Adairville, mostly fescue: \$35 per roll. Pick up only. Steve Nunley **Taylorsville** 678-255-5372

Oats for sale. Lesley Giesbrecht **Davisboro** 478-494-2944

Orchard grass or Fescue hay, 4x5 rolls, fertilized/sprayed, rain free; \$45. Square bales, \$6. Delivery available. William Gilstrap **Dahlongega** 706-300-6592

Pearl millet for food plots: \$35 per 50 lbs. Bryan Maw **Tifton** 229-382-6832

Round bales of Coastal Bermuda, approx. 1000 lbs per roll: \$25 to \$40 per roll. Delivery available. Chad Hendrix **Collins** 912-237-3430

Round bales, 4x5, Fescue/Orchard or Rye Grass, net-wrapped, barn-stored, horse-quality. William **Monroe** 678-975-2071

Russell hay, 4x5 rolls, horse quality, weed free, UGA tested. 2018 cut; \$50 per roll. 2017 cut; \$35 per roll. Lonnie Mckinney **Cordele** 229-947-2878

Tift 44 hay square bales, excellent horse quality: \$6 per bale. Dry and in barn. Paige Bullock **Dallas** 770-445-2107

AG SEED FOR SALE

If you have questions regarding this category, call 404-656-3722.

Advertisers must submit a current state laboratory report, fewer than nine months old, for purity, noxious weeds and germination for each seed lot advertised. Ads submitted without this information will not be published. If you are faxing or mailing in an ad, this report needs to be sent along with it. For ads submitted online, the report can be attached using the attachments button. Seed lots must be uniform and cannot exceed 400 50-pound bags. Certain varieties of seed are protected from propagation unless they are grown as a class of certified seed. These include Florida 304, Coker 9152, Coker 9835, 6738 soybean, Haskell, Bennings and others. For questions regarding certified seed, call the Department's Seed Division at 404-656-3635.

Cereal Rye seed, all in 2000 lb totes. Glynn Solomon **Montrose** 478-697-1502

Old-timey cayenne, yellow cayenne, rooster spur, peter pepper: 25 seeds, \$2/pk + SASE. Terry Madaris 2017 Cloud Springs Rd **Rossville** 30741

Ag Plants for Sale

Catawba, sawtooth oak, crepe myrtle, dogwood, redbud, fig, wild plum, berry. Grace Walsh **Jonesboro** 404-307-8113

Chinquapin trees, 1 y/o bare root seedlings: 5 for \$38. Charles Adams 4880 Lakeland Dr **Marietta** 30068 678-313-1873

Fig cuttings (Brown Turkey) 4 for \$10.00, FREE shipping. www.MuscadinesAndMore.com. Hans Gruetzbach **Dalton** 706-483-4221

Free 4" tall Magnolia plants, You dig, 9-12 seedlings. Walter M Moon **Loganville** 770-979-1596

Pecan seedlings, growing in three gallon pots. 1 year native Persimmon seedlings, packages of 10. Jimmy Crum **Bainbridge** 229-220-3907 229-220-5226

Privacy trees: Leyland Cypress, Thuja Giants; we grow and plant for you in all GA. John **Monticello** 770-862-7442

Ag Seed/Plants Wanted

Huckleberry bushes to plant in NW Ga area. Jeff Wigley **Marietta** 770-206-0794

Want jujubi Chinese date seedlings or planting seed. Please write. Jerry M Lowe Po Box 1132 **Dallas** 30132

Wanted: About a dozen white oak seedlings. Paul Pendergraft **La Fayette** 706-508-8478

FLOWERS AND ORNAMENTALS FOR SALE

If you have questions about this category, call 404-656-3722.

2018 Perennial Blackberry Lily 25 seeds \$3 (cash), SASE. Miltimore 1766 Pleasant Hill Rd Ne **Ranger** 30734

4" perennials, 350 varieties, all \$1.50 each including helleborus. Also 1 gal. grafted Japanese maples, \$20-\$25. Display garden. Selah Ahlstrom **Jackson** 770-775-4967

Apache Tame Blackberry plants (no briars): \$7 ea. Some grow as big as half dollars. Gene Shumake **Greensboro** 470-235-9448

Clivia seeds, fresh 2018, orange: \$1 ea. + SASE. Extra seeds=extra postage. E. Flanagan 204 Sweetwater Ct **Lizella** 31052

Leighton Green Leyland Cypress, 3 gallon; Murray Cypress, 3 gallon. Timothy Keel **Monroe** tkeel@yahoo.com 678-300-2907

Loofah sponge seeds, 25/\$3; 100/\$10. Send SASE. J Shelnett P.O. Box 1212 **Loganville** 30052

Bulletin Calendar

- Feb. 1**
2019 Georgia Ag Forecast Series
UGA Tifton Campus Conference
Center
15 RDC Road
Tifton, Ga. 31794
706.542.5046
agforecast.caes.uga.edu
- Feb. 1-2**
Georgia Young Farmers State
Convention
Augusta Marriott at the Convention
Center
2 10th St.
Augusta, Ga. 30901
- Feb. 4-5**
2019 Georgia Wine Producers
Conference
Chateau Elan Winery & Resort
100 Rue Charlemagne
Braselton, Ga. 30517
www.georgiawineproducers.org
- Feb. 5**
Marketing Your Beef Locally:
Finishing Beef on Your Farm
Edwards Park Community Center
115 Edwards Park
Dalton, Ga. 30721
706.278.8207
roger.gates@uga.edu
- Feb. 7**
North Georgia Prescribed Fire
Council Meeting
Chattahoochee Technical College
100 Campus Drive
Jasper, Ga. 30143
http://www.garxfire.com/events.htm
- Feb. 8-9**
2019 Georgia Organics Conference
UGA Tifton Campus Conference
Center
15 RDC Road
Tifton, Ga. 31794
georgiaorganics.org
- Feb. 9**
Georgia Grown Village at
Whiskey, Wine and Wildlife
Jekyll Island Beach Village & Village
Green
Jekyll Island, Ga. 31527
www.whiskeywineandwildlife.com
- Georgia Iris Society Meeting
"Monarchs and Milkweed Across
Georgia"
St. Bartholomew Episcopal Church
1790 Lavista Road NE
Atlanta, Ga. 30329
678.471.2604

- Feb. 12**
Marketing Your Beef Locally: Meat
Fabrication Demonstration
Walker County Ag Center
10052 N. Hwy. 27
Rock Spring, Ga. 30739
706.278.8207
roger.gates@uga.edu
- Feb. 13**
Georgia Department of Agriculture
Egg Candlering Class
Walker County Ag Center
10052 North Hwy. 27
Rock Spring, Ga. 30739
770.535.5955
- Feb. 12-14**
International Poultry Expo
Georgia World Congress Center
285 Andrew Young International
Blvd. NW
Atlanta, Ga. 30313
www.expohour.com/international-
poultry-expo
- Feb. 21-23**
Georgia National Rodeo
Georgia National Fairgrounds and
Agricenter
401 Larry Walker Parkway
Perry, Ga. 31069
www.georgianationalrodeo.com
- Feb. 26**
Marketing Your Beef Locally:
Finishing Beef on Grass and
Forage
Gordon County Ag Service Center
1282 Hwy. 53 Spur SW
Calhoun, Ga. 30701
706.278.8207
roger.gates@uga.edu
- March 9**
Beekeeping for Beginners
Northeast Georgia Mountain
Beekeepers Association
Ruby Fulbright Aquatic Center
120 Paul Franklin Road
Clarksville, Ga. 30523
www.negabeekeeping.com
- March 14**
2019 UGA Extension Gwinnett Plant
Sale
Gwinnett County Fairgrounds
2405 Sugarloaf Parkway
Lawrenceville, Ga. 30045
Preorder by March 6
678.377.4010
www.ugaextension.org/gwinnett

- April 6**
Kel-Mac Saddle Club Benefit Show
Morgan County Agri-livestock
Facility
2268 Athens Hwy. (U.S. 441 N.)
Madison, GA 30650
706.342.3775
www.kel-mac.com
- May 11**
Kel-Mac Saddle Club Benefit Show
Morgan County Agri-livestock
Facility
2268 Athens Hwy. (U.S. 441 N.)
Madison, GA 30650
706.342.3775
www.kel-mac.com
- Sept. 21**
Kel-Mac Saddle Club Benefit Show
Morgan County Agri-livestock
Facility
2268 Athens Hwy. (U.S. 441 N.)
Madison, GA 30650
706.342.3775
www.kel-mac.com
- Oct. 12**
Kel-Mac Saddle Club Benefit Show
Morgan County Agri-livestock
Facility
2268 Athens Hwy. (U.S. 441 N.)
Madison, GA 30650
706.342.3775
www.kel-mac.com
- Nov. 14-16**
Georgia National Antique Agriculture
Show
Georgia National Fairgrounds and
Agricenter
401 Larry Walker Pkwy.
Perry, Ga. 31069
478.988.6522
pgentry@gnfa.com

*Have an event to put on our
calendar? Contact Amy Carter at
404.656.3722 or amy.carter@agr.
georgia.gov*

*We accept calendar submissions
for food, craft and agriculture
festivals and events. Submissions
for festivals that do not specifically
promote those industries will not
be printed.*

*Additional pesticide recertification
training notices are available on
the department website under the
Plant Industry Division tab.*

Two 100 lb LP tanks, like new condi-
tion: \$75 each. Also three 30 lb tanks.
Larry Dove Po Box 61 **Franklin Springs**
30639 706-498-3438

Wagon wheels available. Larry Wilson
Grovetown 706-651-9505

Woodburning heater (cast iron) with
fan blower, new fire bricks. Good condi-
tion. Charles T Sawyer **Mount Airy** 706-
768-4776

Zebco rod and reel, model 33, 44, 733.
Corn sheller. Saw; 1 man, 2 man. Hu-
bert Arnold 169 Ridge Dr **Jeffersonville**
31044 478-945-3910

Zojirushi Home Bakery Supreme
Bread Machine, model BB-CEC20, like
new: \$200. Glynn Flanagan **Midland**
706-563-3314

Miscellaneous Wanted

ISO a grain silo, 100 miles from Troup
County, 9 tons; \$300-\$1000. Bobby Yar-
brough **Lagrange** 706-884-1873 706-
402-3840

Looking for commercial pecan chop-
per; need one to make pieces. Wade
Parker **Millen** 478-494-6536

Model 36 Chattanooga cane mill.
Tommy Butler **Dexter** 31019 tbutler2@
earthlink.net

Old signs, tools, cool antique barn
junk, old auto parts, old pottery, general
store items, etc. Craig Walker **Cleve-
land** 770-294-5920

Want cats and/or kittens for barn; in or
near Gordon County. Marvin Garner **Re-
saca** 706-913-3165

Bees, Honey & Supplies

10-frame bee hive, \$85; 5 frame bee
hive NUCs, \$65. Also make inner cover/
supers/Top Bar Bee Hive/inside feeder.
Eliseo Delia **Mineral Bluff** 706-492-
5119

16 used hive bodies w/tops and bot-
toms, 75 shallow supers, all cleaned and
palletted; 2000+ frames; all for \$1730.
Bill Slack **Lafayette** 706-638-3791

2019 5-frame nucs for sale, ready mid-
April: \$145. Gary Gailey **Cleveland** gai-
ley.gary@yahoo.com 678-316-9791

3# packaged bees, \$120; 5-frame
NUCs, \$165; queens, \$35; supplies
available. David McDaniel **Rome** 706-
389-5425

5 frame nucs, \$150. Aubrey Ledford
Commerce 706-654-6861

5-frame nucs available middle April;
\$160. Locally grown and mite treated.
Trent Smith **Toccoa** 864-723-4065

Albany/SW Georgia complete bee re-
moval, also hornets, wasps, yellow jack-
ets. Licensed and insured. Dale Richter
Leesburg 229-886-7663

Bee hives for rent for crop pollination,
call for price. Clarke, Morgan, Newton,
Walton County areas. Bold Springs
Apiary. Carl Bishop **Monroe** 770-851-
3761

Bees, honey and queens. www.jarrett-
bees.com. Slade Jarrett **Baldwin** 706-
677-2854

Fresh, unprocessed honey: quart, \$14;
pint, \$8; 8oz bear, \$5. Jimmy Brown
Jackson 770-775-0157

Legaltaly Colibri radial honey extractor,
stainless steel cage, used once: \$250.
Selena Hutcheson **Marietta** shutch6@
bellsouth.net 770-845-0787

Need place in Southeast Ga to put
10 beehives during gallberry/palmetto
bloom. Steve Bond **Gray** 478-986-4056

Order package bees for spring; quality
queens, email for order form. Bj Weeks
325 Roy Haynes Dr **Ball Ground** 30107
weeksworks@gmail.com 770-735-3263

Package bees and NUCs for sale; also
wildflower and Tupelo honey available.
Alan Odom **Rebecca** 229-387-1718

Taking orders for Italian 3lb pack-
ages and 5F NUCS, quantities limited.
Cypress beekeeping equipment in
stock. Bill Posey **Cartersville** 770-595-
9332

Wanted: bee equipment, will pick up
swarms for free. Remove bees from
structure for a fee. Leonard Day **Macon**
478-719-5588

Things To Eat

2018 Desirable Pecans; \$11/lb + post-
age. Will crack, shell, separate your
pecans; \$.50 cents/lb. Russell Eaton
Stockbridge 770-506-2727

2018 pecan halves and pieces; \$10 per
lb. plus shipping via PayPal. Carol Hege
6530 Ga Highway 56 **Millen** 30442 478-
290-2600

2018 pecans, shelled and cleaned,
ready for freezer: \$9 per lb. Peggy Griffin
Clarksville 706-768-8417

2018 pecans, shelled and ready to eat:
\$8/lb. plus shipping. Sue Britt 510 Britt
Rd **Sycamore** 31790 229-402-2300

All natural black Angus beef; sold
whole, half or quarter; grass-fed, grain-
finished. David Sharpton **Commerce**
770-596-3538

For sale: Cuts of Wagyu/Angus beef,
ready mid-February. Belinda Schell **Fort
Valley** 478-954-3840

Grain-finished Angus beef, quarter or
side, cut, wrapped to your order: \$3.50/
lb hanging weight. Jason Cox **Social
Circle** 404-925-5412

Marview Farms provides grassfed
and pasteurized beef, pork, lamb and
goat. Free-range eggs and chickens!
MarviewFarms.com. Fernando Mendez
Arabi 786-210-6544

Sugarcane syrup, no additives, no
preservatives. 25.4 oz; \$9.00. 12.7 oz;
\$6.00. Organic Sugarcane syrup 12.7
oz; \$10.00. Mickey Morris **Odum** mick-
eysfarm@windstream.net 912-586-2241

Sugarcane syrup, pure premium qual-
ity, three 25 oz. bottles shipped: \$42
total. paypal.me/parrishcanesyru Ben
Parrish **Statesboro** 912-536-2200

WANTED: Live Kefir Grains Ginger
Smith **Rome** 706-718-0555

Water-ground meal, whole wheat flour,
grits; will also grind your grain: \$5/5 lbs
+ postage. Mike H Buckner **Junction
City** 706-269-3630

Winter clearance sale: blackberries,
elderberries, huckleberries, figs, mus-
cadines, persimmons, black walnuts,
Chantrelle mushrooms, wildflower hon-
ey; clearance prices. Charles Eaves **El-
berton** 706-436-0310

Herbs

**Advertisers selling ginseng must be
registered with the Georgia Depart-
ment of Natural Resources and proof
of this registration must be submitted
with each ad. Ads for ginseng submit-
ted without this registration will not
be published. For more information,
contact the Georgia Natural Heritage
program at 770-918-6411.**

Fish & Supplies

**Advertisers selling sterile trip-
loid grass carp must submit a cur-
rent Wild Animal License from the
Georgia Department of Natural Re-
sources. Ads submitted without this
license will not be published. If you
are faxing or mailing in an ad, the li-
cense needs to be sent along with
it. For ads submitted online, the li-
cense can be attached using the at-
tachments button. For license infor-
mation, call 770-761-3044.**

A-1 Quality, farm-grown channel
catfish priced by size. Other species
available upon request. Flynt Gilbert
Zebulon 770-468-0725 770-567-
1223

All sizes bass, bluegill, channel catfish,
threadfin, gizzard shad, shellcracker and
more. Free delivery or pickup. Danny
Austin **Roberta** 478-836-4938

Big Red worms/Euro, great fishing;
\$35/lb. Red Wigglers, perfect for com-
posting and fishing; \$20/lb. Lew Bush
Byron bigreds1@cox.net 478-955-4780

Catawba worms: \$1.50 per dozen.
Available live in summer months; frozen
year-round. Joe Mask **Fayetteville** 770-
461-7068

Grass Carp, Bluegill and Shellcracker
Bream, Channel Catfish fingerlings,
Bass, Fathead Minnows; delivery or pick
up, by appt. only. Robert Brown **Brooks**
770-719-8039

Grass carp, Bluegill, Redear, Shell-
cracker, Catfish and Crappie. Delivery
\$2 per mile, one way. Brian Simmons
Hawkinsville 478-892-3144

Koi, Goldfish and Albino catfish for
sale, fish food and pond supplies; call
for more info. Glenn Kicklighter **Sander-
ville** 478-232-7704

Rainbow trout: DNR certified, quality
stockers, hatched on our farm, various
sizes w/delivery/pick-up available. Da-
vid Cantrell **Ellijay** 706-273-6199

Fertilizers & Mulches

100 4x4 rolls of hay, rained on; \$10 a
roll. Richard Baggett **Dalton** 706-271-
6261

2018 bermuda mulch hay, 4x5.5
round bales, net-wrapped under barn,
60 rolls: \$25/roll. Melvin Couey **Alamo**
478-451-7980

Flowers and Ornamentals Wanted

Looking for old-fashioned tall Snow-
On-the-Mountain seed. Linnie Reaves
Smyrna 678-305-2065

FLOWERS REQUIRING PERMITS

*If you have questions regarding this
category, call 404-656-3722.*

**Advertisers selling officially protect-
ed plants must have a permit to sell
such plants. Ads submitted without
this permit will not be published. If
you are faxing or mailing in an ad, the
permit needs to be sent along with it.
For ads submitted online, the permit
can be attached using the attach-
ments button. For information on the
sale or shipment of protected plants,
call the Protected Plant Program at
770-918-6411.**

MISCELLANEOUS

*If you have questions regarding ads in
this category, call 404-656-3722.*

(2) 4 wheeler tires, 12 in; free standing
solid steel wood burning stove. Jerome
Bunn **Forsyth** 478-954-9044

16 pcs. old 10' tin, \$120; 4 rolls 10"
belting and 4 rolls 4" belting, \$100. Dale
Ferguson **Grovetown** 706-836-0699

1928 Model A, two-door sedan; new
tires, motor good condition. David Jack-
son **Sugar Valley** 229-310-3258

1997 Fleetwood Bouncer RV: 69,000
miles, gas, new tires, rotors, brakes, fuel
pump, more: \$11,000. Eric Warren **Fair-
mount** 404-403-0141 404-403-0141

21 bridge timbers, 8"x13"x11'; will
separate: \$100 ea. or all for \$1,000. You
haul. Suzanne Broussard **Plains** 770-
778-8682

275/55 R20 Goodyears (KEVLAR), 50
percent tread left: \$200 for all 4. Jim Le-
ver 209 12Th St W **Tifton** 31794 lever@
friendlycity.net 229-392-3257

4 claw feet for old claw-foot tub, per-
fect condition; four for \$125. Jean Loo-
mis **Cumming** 770-778-2790

55 y/o 60-gallon syrup boiler. great
condition; \$450, cash only. Stephen L.
Smith **Reidsville** 404-714-8220

Antique farm equipment: Mule-drawn
stalk cutter, 3 pt. hitch hay rake, 6-row
John Blue duster, 100 y/o house. Paul
Saxon **Woodland** 256-449-6281

Antique White Mountain ice box, origi-
nal in excellent condition. Mike Huckeba
Whitesburg 770-371-2148

Anvil, 165 lbs, one horn; \$390. Audley
Jarvis **Vienna** 229-268-6283

Buck stove fireplace insert, ex. cond.:
\$650. Pics available. Robert Mcguinty
Rochelle mcapple1@windstream.net
229-276-5852

Carpenter bee traps for capture and
disposal, shipped in lots of 5 for \$85.
William Timmerman **Harlem** 803-640-
6265

Claw-foot bath tub; \$200. James Les-
ter **Gainesville** 678-316-3814

Direct vent propane heater, vents
through outside wall, outside air for com-
bustion. Eugene Parker **Dahlonega** 678-
450-1632

Farm 911 Signs-Farm Safety and
Emergency Signage. An informa-
tion source for greater peace of mind.
Website: farm911signs.com Daren Sue
Truex **Cumming** 678-628-6767

FREE Honda rototiller. Model FR600.
Running when parked. James Turnip-
seed **Powder Springs** 770-943-3880

Harman PF-100 wood pellet furnace,
112,625 BTU, used for one season,
utilities-free heat: \$2900. Jon Robertson
Acworth flyingrobertsons@gmail.com
678-852-8168

Lift-gate for farm truck, complete with
rear step: \$500. Donald Taylor **Fayette-
ville** 404-867-2193 770-487-7430

Log splitter with 205cc Briggs & Strat-
ton motor, 30" x 3/4" cylinder: \$800.
Sam Larimer **Barnesville** 770-358-3564

Need approx. 40 planed walnut boards.
Pery Waits **Monroe** 770-267-0443

Oak firewood, split, stacked, covered.
Priced right. You haul. Please leave mes-
sage. Julius Akins **Dalton** 706-517-5777

Old-fashioned rabbit box traps. Stick
trigger system; \$20. Cedar bluebird
houses. Cleanout lid; \$15 + \$8 shipping.
Donald Allen 3647 Spain Rd **Snellville**
30039 404-578-7758

Pumps, 10 hp and 30 hp, 3-phase
power station, 10-310 GP@120 PSI, on-
demand system, exc. condition: \$4250.
John **Ball Ground** 770-289-8665

Set 2011 Tundra stock wheels: \$150.
18"X8" 5 lug, 150mm bolt pattern. Joe
Hutchinson 162 Hutchinson Ct **Wood-
bine** 31569 912-576-5059

Stihl BT 120 C posthole/soil auger.
4in., looks good, always kept inside,
last run 10 yrs ago: \$75. Peter Avers Sr
Snellville 770-979-2839

Tractor service and shop manual; \$25
and up. Danny R Manning **Cochran**
478-230-2635

Tractor tops, fiberglass: \$40. Fits most
tractors if you have existing framework.
Jay Sylvester **Gainesville** 770-380-6747

UGA student-volunteers help rural Georgians file taxes, get bigger refunds

By Ellen Hallman for UGA CAES News

For more than a decade, the Volunteer Income Tax Assistance program offered through the University of Georgia College of Family and Consumer Sciences Department of Financial Planning, Housing and Consumer Economics has offered free tax help to Georgians with low-to-moderate incomes, persons with disabilities, the elderly and limited-English-speaking taxpayers.

In 2017, with help from UGA Cooperative Extension, the program expanded to offer online services to reach eligible taxpayers in more rural areas of Georgia.

Joan Koonce, UGA Extension financial planning specialist, is looking forward to watching the program grow again this year after watching the progress of the online program with UGA Extension. The program began in 2017 with agents from southwest Georgia and now includes agents from all four districts.

“We only did it a few days each week for one month in the first year,” Koonce said. “We saw what worked well and what didn’t work well. Really, we had greater demand than we could actually keep up with.”

To develop the online program, Koonce worked with Lance Palmer, financial planning professor and director of VITA for UGA, and Andrea Scarrow, director of UGA Extension’s Southwest District, who was the district’s FACS program development coordinator at that time.

“I wanted to expand as much as we possibly could to serve as many people as possible,” said Koonce, adding that agents completed 115 tax returns in 2017. With the help of numer-

ous county Extension agents, taxpayers from every district in Georgia received assistance in 2018 and the service more than doubled the number of tax returns completed to 387.

Like last year, the service will be offered throughout the tax season, from Feb. 1 through April 12, when taxpayers from districts all over Georgia will be able to go to select county extension offices to meet with county agents who conduct a brief interview and gather the required documents. Afterward, the county agents return the required documents to Koonce using an encrypted email service and an email set up specifically for the program.

Students on UGA’s Athens campus prepare the tax returns early each week, then hold virtual meetings with individual taxpayers later in the week to discuss the returns.

“The students are a big part of this,” Koonce said. “It’s a lot of work, but it is so rewarding.”

The service benefits both Georgia taxpayers and UGA undergraduate and graduate students, who gain real-world training in addition to the course credit they earn for their participation.

“We have a lot of elderly people who are in the southwest and southeast districts who have retirement income and all kinds of tax-related things going on,” Koonce said. “So, the students get to really learn about a variety of tax situations.”

She estimates VITA saves each taxpayer served an average of \$300. But perhaps the greatest return is captured in what Koonce says motivates her, and many others, to contribute their time and their efforts to this program.

“I enjoy helping people,” she said.

The UGA Extension offices in the following counties participate in the Vita program: Appling, Bibb, Clayton, Crisp, Colquitt, Dougherty, Elbert, Lincoln, Morgan, Oconee, Quitman, Richmond, Spalding, Sumter, Tattnall, Tift, Washington and Wilkes. To find a participating UGA Extension office near you, call 1.800.ASK.UGA1 (1.800.275.8421).



The Volunteer Income Tax Assistance program offered through the UGA College of Family and Consumer Sciences has expanded its free tax assistance program to include taxpayers in more rural areas of the state.

USDA reopens FSA offices for additional services during government shutdown

WASHINGTON, D.C. – U.S. Agriculture Secretary Sonny Perdue announced Jan. 22 that all Farm Service Agency offices nationwide will reopen to serve farmers and ranchers during the lapse in federal funding. Certain FSA offices have been providing limited services for existing loans and tax documents since Jan. 17. Beginning Jan. 24, however, all FSA offices opened to offer a longer list of transactions.

Additionally, Perdue announced that the deadline to apply for the Market Facilitation Program, which aids farmers harmed by unjustified retaliatory tariffs, has been extended to Feb. 14. The original deadline was Jan. 15. Other program deadlines may also be modified.

“At President Trump’s direction, we have been working to alleviate the effects of the lapse in federal funding as best we can, and we are happy to announce the reopening of FSA offices for certain services,” Perdue said. “The FSA provides vital support for farmers and ranchers and they count on those services being available. We want to offer as much assistance as possible until the partial government shutdown is resolved.”

The U.S. Department of Agriculture has temporarily recalled more than 9,700 FSA employees to keep offices open from 8 a.m. to 4:30 p.m. weekdays beginning Jan. 24. For the

first two full weeks under this operating plan (Jan. 28 through Feb. 1 and Feb. 4 through Feb. 8), FSA offices will be open Mondays through Fridays. In subsequent weeks, offices will be open three days a week – on Tuesdays, Wednesdays and Thursdays – if needed to provide the additional administrative services.

FSA can provide these administrative services, which are critical for farmers and ranchers, because failure to perform these services would harm funded programs:

- Market Facilitation Program.
- Marketing Assistance Loans.
- Release of collateral warehouse receipts.
- Direct and Guaranteed Farm Operating Loans, and Emergency Loans.
- Service existing Conservation Reserve Program contracts.
- Sugar Price Support Loans.
- Dairy Margin Protection Program.
- Agricultural Risk Coverage and Price Loss Coverage.
- Livestock Forage Disaster.
- Emergency Assistance Livestock, Honey Bees, and Farm-raised Fish Program.
- Livestock Indemnity Program.

- Noninsured Crop Disaster Assistance Program.
- Tree Assistance Program.
- Remaining Wildfires and Hurricanes Indemnity Program payments for applications already processed.

Transactions that will not be available include, but are not limited to:

- New Conservation Reserve Program contracts.
- New Direct and Guaranteed Farm Ownership Loans.
- Farm Storage Facility Loan Program.
- New or in-process Wildfires and Hurricanes Indemnity Program applications.
- Emergency Conservation Program.
- Emergency Forest Rehabilitation Program.
- Biomass Crop Assistance Program.
- Grassroots Source Water Protection Program.

Updates to available services and offices will be made during the lapse in federal funding on the FSA shutdown webpage, www.fsa.usda.gov/help/shutdowninfo. Programs managed by FSA that were re-authorized by the 2018 farm bill will be available at a date yet to be determined.

2018 mulch hay, \$50/roll at barn, delivery available. Gary Brinson 6786 Old Louisville Rd **Tarrytown** 30470 912-286-3191

4x5 net-wrapped mulch hay, truck-load: \$15. Delivery available. David Clemens **Waynesboro** 706-466-2944

Aged garden compost and mulch, horse manure and shavings; we load, by appointment, trucks: \$5-\$10. Charlene Cook **Fort Valley** 478-825-1981

Aged horse manure mixed with shavings; \$5 truck load. Can load with tractor. Monti Hight **Macon** 478-960-2008

Free aged horse manure, few shavings, good for gardens, you load and haul. Jim Campbell **Monroe** 770-527-5636 770-617-2912

Free compost horse manure and shavings. Jerry **Douglasville** 770-949-2238

Fresh clean red pine straw installed and cleaned; \$4/bale. We also have long needle pine straw. Travis Golden **Conyers** 770-895-8073

Fresh Pine straw installed. \$4.25 per bale, no additional fees. Reliable service. Long needle available Gloria Williamson **Gainesville** ysrv@hotmail.com 770-912-6671

Long leaf pine straw delivered and spread or semi trailers dropped. Joshua Bulloch **Manchester** 404-925-1076

Poultry Litter/Compost

Poultry litter for sale. Unlimited quantity. Delivery available. 7 tons per load for \$1.50 per loaded mile. Andrew Rodriguez **Greensboro** 678-777-7990

Oddities

Gourds, many varieties; Martin gourds fixed, ready to hang, at farm or shipped to you. Charles Lang **Cordele** 229-406-5039

Grow your own LUFFA washcloths from seed: \$3/20; \$5/40, \$7/60 + SASE. Davis Yaun 15412 Ga Highway 86 **Soperton** 30457 aikenyau@gmail.com 912-399-1988

Lucky Buckeyes; \$4.25/doz. Planting Buckeyes; \$5.25/dozen. Instructions included, please include postage. Jules Simmons **Smoke Rise** 828-226-4700

Garden Space

If you have questions regarding ads in this category, call 404-656-3722.

Farmers Markets

Markets may use this category to advertise vendor space for rent or lease, as well as days and hours of operation.

Out-Of-State Wanted

Firewood

Firewood must be cut from the advertiser’s personal property. Ads for firewood must use the cord when specifying the amount of firewood for sale.

Fat lighter, very reasonable. Please contact me between 5 and 9 pm. Pick-up only. Alan H. **Arnoldsville** 706-227-0781

Firewood for sale: oak, hickory, elm, ash, hardwood; \$145 for a full cord. Randy Jackson 1810 Dews Pond Rd Ne **Calhoun** 30701 678-986-5914

Firewood, mixture hickory/oak, \$150 per cord. Smoke seasoning fruit wood: peach, apple, nectarine, fig. Marion Flowers **Decatur** 770-987-9622

I have 65 trophies cooking BBQ with pecan wood. I have 4 cords, cut and seasoned at \$100 per cord. You pick up. Jesse H Arnett **Tifton** 229-382-6517

Red and white oak, some hickory: \$195 cord. Local delivery, 5-10 miles of Canton and Cartersville. Frank Lundak **White flundak@gmail.com** 770-668-6901

Red oak firewood for sale. Different sizes, lengths. Will deliver locally. Travis Ulfik **Oxford** 470-891-1853

Seasoned oak firewood, \$190/cord, \$90 half cord. Delivery available. James Sells **Monroe** 678-425-7543

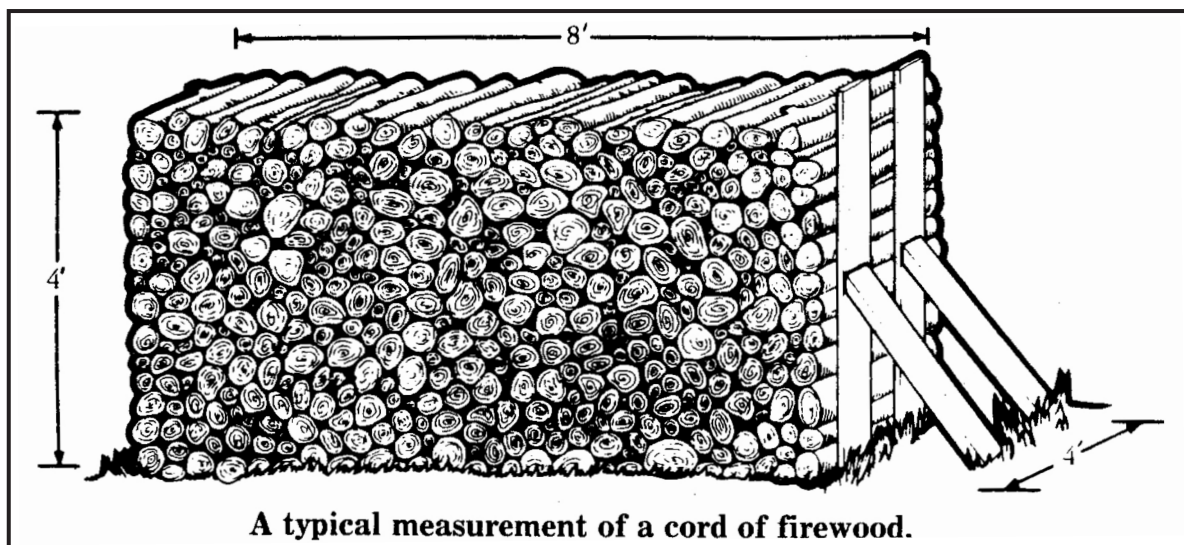
Split oak, hickory; \$180 a cord/\$90 a half cord. Additional charge for delivery. Eddie Akin **Griffin** 678-378-9175

Split seasoned hardwood; \$165 per cord. Can deliver with dump trailer. You pick up: Long-bed, \$85; short-bed, \$65. Norm Johnson **Taylorville** 770-684-7298

Timber

Timber must be individually owned and produced by the advertiser on his personal property. No companies or businesses are allowed to advertise timberland in this category. Timberland advertised must be at least one acre. Timber wanted ads will not be published.

85 cedars growing along driveway, S. Oconee; 10” to 12” diameter measured 4’ above ground; you cut and haul. Leonard Hampton **Watkinsville** 706-769-4669



A typical measurement of a cord of firewood.

A cord is defined as 128 cubic feet of wood stacked by the line or row in a compact manner with individual pieces touching; it can be four feet high, four feet wide (deep), and eight feet long, or any combination of these measurements (height, width and length) that yields 128 cubic feet.

UGA Ag Forecast Series helps farmers plan for a fresh start in 2019

By Amy Carter

amy.carter@agr.georgia.gov

MACON – With the wounds from Hurricane Michael still fresh and growers' hopes for immediate federal assistance dashed by a partial government shutdown, the University of Georgia is helping farmers plan for another go at it in the new year with its annual Ag Forecast series. The first meeting in the series was held Jan. 22 at the headquarters of the Georgia Farm Bureau.

"We would not be farming if we were not optimists," said Georgia Farm Bureau President Gerald Long. "This coming year is going to be, how can I put it, an exciting, concerning, challenging year. But we as farmers, as an agriculture industry, we will survive it."

Farm Bureau is expecting storm-related insurance claims to total as much as \$160 million. Multiple commodities experienced catastrophic losses valued at \$2.5 billion.

Widespread rain in the months since the storm further dam-

aged crops statewide. Cotton farmers have been trying since October to harvest the remnants of what promised to be a historic crop.

"I've never picked cotton in the first of another year," Long said.

Long said a neighbor in Bainbridge recently gave up trying to harvest his crop and mowed under 1,200 acres of cotton.

The ongoing government shutdown and international trade disputes made it difficult to deliver predictions for Georgia agriculture market conditions in the coming year. Additionally, provisions of the 2018 Farm Bill won't figure into those predictions until the U.S. Department of Agriculture drafts new rules and regulations implementing the new policies, said Adam Rabinowitz, assistant professor in UGA's Department of Agricultural and Applied Economics.

Long and Sam Pardue, dean of the UGA College of Agricultural and Environmental Sciences, said many growers are eager to see Georgia develop a plan for growing industrial hemp as allowed by the Farm Bill. The bill authorizes state

departments of agriculture to consult with their governors and chief law enforcement officers to develop a program to license and regulate industrial hemp with a THC content of 0.3 percent or less. THC is the primary intoxicant in marijuana.

At a recent meeting of the American Farm Bureau Federation in New Orleans, an educational session on hemp drew a standing-room-only crowd, Long said.

"That tells you everyone, every farmer, is looking for something, trying to figure out some way to survive this dilemma that we're in," he said.

Pardue said UGA wants to assist Georgia in developing its own hemp program but warned that it is a volatile crop.

"Colorado State said there is potential for hemp but there's also considerable risk associated with industrial hemp production because there's going to be volatility in price, yield and regulatory environment," he said.

Pardue said the state of Kentucky, which is currently piloting a hemp research program, has reported losses of \$1,500 per acre and profits of \$2,700 per acre.

CONFERENCE: Pepper weevil is a new problem for SW GA farmers

Continued From Page 1

purposes with a scan of their badge.

Data transfer on the base model is accomplished with a flash drive. The cellular model on the Verizon network is an upgrade that posts data to the cloud every minute or so.

"It's real-time data out of the field so you can monitor your number of employees and fruit picked from anywhere in the world," he said.

The company, which targets blueberry growers with its product, is four years old and released its harvest scale system two years ago. This was Bertrand's third year at the show.

Justin Bean with Reusable Transport Packaging of St. Petersburg, Fla., talked plastic harvest containers – including hand-held totes for blueberries and larger bulk containers for onions – with growers.

"This is a great show for us," he said. "Since we're based out of the southeast and a lot of our products are here we have a lot of customers in this area and we get to connect with them and see them face-to-face."

Sue Koluchi with H.M. Clause, a French-owned seed company that markets under the Harris Moran brand name in the U.S., said the show allows her to connect not only with regional customers but growers throughout North America.

"This is one of the top shows in the Southeast. Growers come from the entire Southeast as well as Michigan growers, Ohio growers, Canadian growers. We love coming here because we get to connect with our customers all over the country, essentially."

Royalty and Other Celebrities

U.S. Agriculture Secretary Sonny Perdue made an appearance at the conference, as did Georgia Agriculture Commissioner Gary W. Black. The real showstopper, however, was Georgia Watermelon Queen Savannah Hartley on one of the last official assignments in her year-long reign.

"I will relinquish my crown at the end of January, crown a new queen, and then compete for the national title in February in Hawaii," said the Glenwood native. Hartley earned her undergraduate degree in Agriculture Communications from Abraham Baldwin Agricultural College and is pursuing a degree in Ag Law at Mercer.

During her reign, Hartley handed out watermelon to runners in the Charleston, S.C., Cooper River Bridge Run, and represented Georgia's watermelon growers at Canada Day, NASCAR races and trade shows. She's also instructed grocery store patrons and school children in the art of picking the perfect melon.

"There's three steps to picking out the perfect watermelon. Look: you want to look at the watermelon to make sure there are no deep cuts or bruises. You want to lift the watermelon and

make sure it's good and heavy – watermelons are 92 percent water," she said.

"And then the third thing you do is turn them over. There's a yellow spot, that's our ground spot. A lot of people think that's bad but that's actually where the watermelon got to sit in the field and had plenty of time to grow and reach its full maturity. So, when you see that yellow spot that means you have a really good ripe watermelon. That's the three steps that we do in schools and in grocery stores to teach people how to pick the perfect watermelon."

Research and Other Advice

Industry experts and scientists from various universities throughout the U.S. and internationally presented information on many topics of interest to fruit and vegetable growers. Education tracks focused on business operations, food safety, organic production, precision ag technology and issues specific to the growing of blueberries, caneberries, strawberries, peaches, muscadines, Vidalia onions and vegetables.

Dr. Stormy Sparks, a University of Georgia Extension entomologist in Tifton, discussed the emergence of the pepper weevil in Georgia.

The problem is most pronounced in jalapeno pepper fields in

Growers who attended the agritourism and roadside market tracks learned how a 5K run and a multigenerational management approach can bring new business to a farm.

Sarah Aschliman, general manager of Island Grove Wine Co. in Hawthorne, Fla., offered a quick course in staging a 5K run on the farm. The first year her family opened their 700-acre farm to runners, they hoped for 200 people. More than 500 showed up.

In the three years since, attendance has grown steadily – 900 runners participated in November 2018 – and so has the exposure for the winery that is the public face of the family's blueberry operation.

"The people who came the first year to the race, in particular, a lot of them had never heard of us," Aschliman said. "What I really like about the customer profile on those runners is that they are smart, health-centric people who ... are already buying fruit, vegetables, and our wine has a lot of health benefits being a blueberry wine. It's been a new market base for us that we didn't know about, and they buy a lot of wine the day of the race."

Fresh ideas from the younger generation have worked similar magic at Dickey Farms in Musella. Cynde Dickey and her son, Lee, who is the fifth generation to work the family's peach

farm, discussed the benefits of incorporating the tech-savvy talents of younger generations. Since moving back to the farm three years ago, Lee and his wife, Stacy, have given the farm a sophisticated online presence and a youthful social media identity.

"The title of our talk is 'Incorporating the Next Generation,'" Cynde Dickey said. "I thought the title was going to be incorporating the older generation, trying to bring his Dad and I into this century."

Since Lee and Stacy have returned, Dickey Farms has added a strawberry u-pick patch to its long-standing retail peach sales experience. Two acres of strawberries have created the opportunity to open the farm to visitors earlier in the year.

"Our peach season goes from mid-May to early August, so that was really when the retail area was operating, in the summer," Lee

Dickey said. "Strawberries come in late March, early April, and overlap with peaches, so there's a nice benefit there. Our season now starts two months early, and we've also added a fall season going all the way to the end of October."

A new playground and the addition of field trips have increased the appeal of the farm as a destination.

"We're not in a high traffic area. We're not close to an interstate," Lee Dickey said. "People have to leave their house with the intention of coming to see us. We've been intentional about adding activities that give them the opportunity to spend extra time with us."



A John Deere sprayer retrofitted with Mattracks rubber tracks that allow heavy machinery to operate in mud, snow and rocky areas without bogging down or significantly compacting the ground. (Provided photo)

Colquitt, Echols and Grady counties, Sparks said. A survey of those fields in the winter of 2018 found adult weevils overwintering on pods left on the ground and the foliage of plants left to regenerate.

"The biggest recommendation I can make for pepper weevil is get rid of your crop and destroy the pods if you can," Sparks said. "If you let plants regrow, the pepper weevil cannot reproduce on the foliage, but they can feed on foliage and if they've got food they can live a really long time under cool conditions. It's not going to get cold enough to kill them. We're trying to starve them to death."

Find Georgia Agriculture Online! www.agr.georgia.gov



www.facebook.com/georgiangrown



@GeorgiaGrown: <https://twitter.com/>



@GaPoultry



@lamgeorgiagrown



Georgia Grown: <https://www.pinterest.com/GaDepAg/>