

FARMERS AND CONSUMERS

MARKET BULLETIN

GEORGIA DEPARTMENT OF AGRICULTURE • GARY W. BLACK, COMMISSIONER • WEDNESDAY, MARCH 25, 2020 • VOL. 103, NO. 7 • © COPYRIGHT 2020

To our readers: Due to technical issues, we were a day late going to press with this issue. We apologize for the inconvenience, which was in no way related to Coronavirus. We are committed to a schedule of uninterrupted production of the *Market Bulletin* for as long as circumstances allow.

You may view the latest issues and place and search Classified ads online 24 hours a day, 7 days a week, at agr.georgia.gov/market-bulletin.aspx.

We're still here if you need us. Don't hesitate to reach out.

FROM THE COMMISSIONER: Now is the time to be fearless

By Gary W. Black
Georgia Agriculture Commissioner

David and Solomon both affirmed that "the fear of the Lord is the beginning of wisdom." Contextually, this fear refers to reverence, respect and awe. Cable news and social media outlets seem to prefer the terror aspect of the word. Terror detracts wisdom.

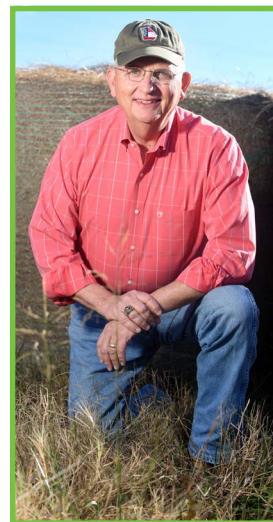
As citizens of the greatest state in the greatest nation on earth, we must not be fearful. Now is the time to be fearless. Why? Your family is watching. Your neighbors may need you. Your colleagues at work and church respect you. Your state and country rely on you. Lastly, you need to be you for your own good during tough times. Your (my) response sets the tone. Establishing the standard for reacting to current challenges is an enormous responsibility.

What young couple needs help with kids who are out of school? Can you pick up a prescription for Mrs. Johnson? Will you help stop the run on toilet paper by being patient? These are small but fearless steps we all must take.

Have you considered the benefit of what near-term might be an abundance of this thing formally known as family time? Might some relationships be restored? Will one kitchen pan say to the other, "It's been years since both of us have been used for five nights in a row"? Yes, good looms nearby during this interruption in normalcy if we fearlessly search for it.

COVID-19 demands attention. The seriousness of its threat is obvious. But in this drama *Respect* and *Wisdom* enter stage-right in starring roles. Wisdom says follow recommended steps to reduce risks. Respect pleads for good decision-making and compassion. I am convinced their fearless performances will yield a positive review. Take the stage with them.

Your Department of Agriculture is on the job, albeit in a Coronavirus-adjusted envi-



ronment. Every division will be staffed with primary leadership every day. Many field inspectors will be maintaining contact with licensed establishments via email and telephone. Business-vital services like meat inspection and seed laboratory testing will continue for now on regular schedules. Our teams will investigate complaints.

Lastly, though normal telephone traffic will temporarily require an enhanced voice mail system as your first point of contact, you have my personal assurance that license inquiries, general questions and

most any other regulatory need will be met.

We have never seen COVID-19 before? I suggest COVID-19 has never seen the response of 11 million fearless Georgians either. Be safe. God, please bless and keep Georgia and the United States of America.

MERCER MEDICAL MOMENT: Ways you can help disrupt COVID-19

By Amber Schmidtke, Ph.D.
Mercer University School of Medicine



Coronavirus disease 2019 (COVID-19) is caused by a virus that belongs to a family of viruses that can cause a wide spectrum of disease, ranging from the common cold to severe acute respiratory syndrome. For COVID-19, the most commonly observed symptoms are fever, cough, and

shortness of breath, making it difficult to distinguish this infection from seasonal allergies, a common cold, or influenza. Most cases are mild and can be successfully managed at home.

However, patients with underlying medical conditions – including heart disease, hypertension and kidney disease – are at higher risk for serious complications and may require hospitalization. If you are experiencing symptoms, it is important to call your medical provider to ask whether you might be a candidate for testing. Currently, there is no vaccine or medication approved to treat COVID-19. The best way to protect yourself is to avoid contact with the virus.

Cover your coughs and sneezes with your elbow (not your hands!) and avoid touching your eyes, nose, and mouth. Thankfully, the virus is disrupted by ordinary soap. So

washing your hands frequently, for 20 seconds each time, with soap and water will inactivate and remove the virus. Soap is preferable to hand sanitizer, but hand sanitizer can be used if it is at least 60 percent alcohol. Beware: the virus can remain infectious for up to three days on metal and plastic, and up to 24 hours on cardboard.

Common household disinfectants should be used to clean frequently touched surfaces such as door knobs, light switches, appliance buttons, etc. The proper length of time between applying a disinfectant and wiping it up is critical in killing and removing the virus from these surfaces, so be sure to follow the manufacturer's directions.

In addition to these personal precautions, avoid crowded areas where you cannot maintain six feet of distance between yourself and others. To limit the spread of

COVID-19, communities across Georgia and the United States are enacting social distancing measures, which are motivated by the concern that if too many people are ill at the same time, we might overwhelm the capacity of our hospitals and clinics to properly care for the sick. While these closures and disruptions are major inconveniences, social distancing has been proven to work during past pandemics and has limited COVID-19 spread in other countries.

For more information, visit www.dph.georgia.gov/ or email Dr. Amber Schmidtke at Mercer University School of Medicine (schmidtke_aj@mercer.edu)

-Amber Schmidtke, Ph.D., is assistant professor of microbiology in the Department of Biomedical Sciences at Mercer University School of Medicine in Macon.

April is Pest Control Month in Georgia

Gov. Brian Kemp signed a proclamation declaring April Pest Control Month in Georgia. Pictured with the Governor are members of Georgia's Structural Pest Control Commission and the Structural Pest Section of the Georgia Department of Agriculture, from left: Derrick Lastinger, Tim Taylor, Connie Rogers, Cliff Baird, Garry Adams, Gov. Kemp, Stuart Sinyard, Brantley Russell, Glen Ramsey, Brett Craig, Rick Bell and Bodine Sinyard. GDA's Structural Pest Section works with the commission to license and regulate pest management professionals, specifically those engaged in the business of structural pest control in the state of Georgia. Structural Pest refers to the process intended to eliminate, remove and inspect for unwanted insects and/or animals in or around structures.



Advertise in the *Market Bulletin*

Classified advertisements in the Market Bulletin are free to subscribers and limited to one ad per issue per subscriber number. Ads run a maximum of two consecutive issues unless requested otherwise. Advertisements from businesses, corporations, dealerships, real estate agents or other commercial entities are not permitted. All items advertised must be farm-related.

Advertisers and buyers are advised to be aware of state and federal laws governing the sale and transfer of live animals. GDA rules also require the submission of certain documents attesting to the health and/or viability of livestock, plants and seed submitted for sale before ads for those items can be published. Those rules are posted online at <http://agr.georgia.gov/advertising-information.aspx>. They are also summarized beneath the headers of all affected Classified categories in every issue of the *Market Bulletin*.

The Georgia Department of Agriculture does not assume responsibility for transactions initiated through the *Market Bulletin* but will use every effort to prevent fraud. Advertisers are expected to fulfill the terms of their offers. Failure to do so through either negligence or intention may require the *Market Bulletin* to refuse future ads.

Market Bulletin staff reserves the right to designate ad length and to edit for spelling, grammar and word count. Classified ads are limited to a maximum of 25 words, including name and contact information.

There are three ways to submit your ad.

Fax: 404.463.4389

Mail: Georgia Department of Agriculture
Attn: Market Bulletin
19 Martin Luther King Jr. Drive SW
Atlanta, GA 30334-4250

Online: www.agr.georgia.gov

Please include your subscription number on all mailed and faxed correspondence.

Questions about advertising? Call 404.656.3722

Subscribe to the *Market Bulletin*

A one-year subscription to the Market Bulletin is \$10 and includes both print and online access.

To subscribe or renew an active account online visit agr.georgia.gov to pay using a Visa or MasterCard.

To subscribe by phone, renew an expired subscription, update your address or report delivery problems call 404.586.1190 or 800.282.5852.

To subscribe by mail send a check or money order payable to the Georgia Department of Agriculture along with your name, complete mailing address, email address and phone number to:

Georgia Department of Agriculture
Attn: Market Bulletin
P.O. Box 742510
Atlanta, GA 30374

Call the Georgia Department of Agriculture

404.656.3600 | 800.282.5852

AI Hotline 855.491.1432

Georgia Grown
404.656.3680

Food Safety
404.656.3627

GATE
855.327.6829

Plant Protection
404.463.8617

Equine Health
404.656.3713

Licensing
855.424.5423

Animal Protection
404.656.4914

State Veterinarian
404.656.3671

Fuel and Measures
404.656.3605

Market Bulletin
404.656.3722

Georgia Department of Law Consumer Protection Unit
404.651.8600 | 1.800.869.1123

Access the *Market Bulletin* online any time at
<http://www.agr.georgia.gov/market-bulletin.aspx>

FARM MACHINERY

Please specify if machinery is in running condition.

TRACTORS

(2) 1952 Ford tractors for parts. You haul away: \$500. K. Major **Cumming** 678-642-9345

(2) 6 volt generators Ford 9N, 8N: \$75. Larry Mongin **Metter** 912-685-5014

135 Massey Ferguson diesel tractor, power steering, in-frame engine overhaul: \$3975. James Sullivan **Vidalia** 912-537-4944

135 Massey Ferguson gas, p.s., 5ft bush hog, 5ft finish mower, 5ft scrape blade, 5ft all-purpose plow subsoiler: \$5000. Alvin Johnson **Snelville** 770-388-9347

1952 Farmall cub, runs perfect, good hydraulics, new tires, new brakes, great paint: \$2350. Wayne Swanson **Ringgold** 706-935-4691

1952 Ford 8N tractor. Very good condition: \$3750 OBO. Leighman Tillman **McDonough** 770-914-6778

1952 Ford Tractor 8N, engine turns over: \$1500. Charles Corbett **Loganville** 770-714-7318

1956 John Deere tractor, working condition: \$2200. James Causey **Albany** 229-435-4296 or 229-395-6300

1969 Ford 2000 tractor w/5ft bush hog; tractor has new tires, starts right up: \$4500 OBO. Luis Binnier **Social Circle** 267-718-9760

1975 MF, exc tires, recently rebuilt engine & hydraulics, good paint, needs a steering gear box: \$5000. C.C. Swafford **Talmo** 404-402-7673

1978 John Deere 444D. B.L. Kent **Millen**, 475-982-5870

1980 MF 80 hp, 4cyl Perkins, 7' International bush hog: \$5600. Stacy Whitworth **Toccoa** 706-391-3818

1985 Ford 340 B 2WD with loader, ROPS, 48HP, original paint. Good condition. Ask for Gary. Frank Griffin **Bremen** 770-265-3164

1989 John Deere model 770 with model 70 front loader and fully adjustable pallet fork. Excellent condition: \$6500. Peacock Hill Farms **Stockbridge** 770-860-8989

1992 JD 2355 tractor. Front end loader & bucket. One owner, new tires, exc cond., needs minor cosmetic work, no rust: \$12,000. Bennett Daniel **Milledgeville** 478-454-6440

1992 Massey Ferguson 240, 3000hrs, good dependable tractor: \$5000. William Davis **Kingston** 770-655-2913

1998 283 Massey Ferguson, 89 hp, good condition, 2700 hrs: \$8500. Milton Roberts **Washington** 706-285-2987

2005 JD 5420 tractor w/front end loader and MX8 mower, 900hrs, kept inside, never abused. Maintenance record available. Dan Gibson **Due West, SC** 864-378-8609.

2010 JD, model #3005, 27hp Yanmar Diesel, 3pt hitch, independent PTO, like new, 84 hrs manual shift: \$9500. L. Taylor **Madison** 706-342-0496

2012 JD 6330, 3 remotes, 7300 hrs, ready to go to work. David Joiner **Hahira** 229-560-5636

2015 John Deere 5065E, 4WD, 380 hrs, loader, forks, excellent condition: \$34,000. Bill Woodard **Kathleen** 478-718-7174

2016 Kubota 3901 HST, diesel, loader, grapple, 46hrs, always sheltered, basically new. Other equip included: \$19,500 **Saint Simons Island** 770-378-4214

3000 Ford, gas, looks and runs good, no major problems (app 1974) plus five pieces of equip for: \$5000 obo. Warren Sap **Ellabell** 912-661-1443

420 John Deere, good metal, needs work, good tires: \$750. D.L Smith **Williamson** 770-567-3516

820 John Deere, 3cyl diesel, needs head gasket: \$2100. 91 Ford F150 Lariat 4x4. A McLane **Hartwell** 706-436-4476

8N Ford Tractor, '51-'52 model, good tires, sheet metal & paint. New 12-volt alternator. Text for pics. Otis Jordan **Savannah** 912-308-1260

Allis Chalmers CA, 2B MDL restored with cultivator & plow, one with belly mower, all run good. Also, some extra parts. M. Shaw **Waycross** 912-283-7150

B Allis Chalmers 1950, good tires, good skin, runs good. Comes with cultivator and plows: \$2600. Jessie Arnett **Tifton** 229-382-6517

Belarus 505, 65HP, water cooled. Runs good, loader, 6ft bucket, 3pt hitch, 540PTO, 2WD. 1 set remotes on rear, 2 mid: \$6000. Andrew Kinder **Royston** 706-386-0895

Bush Hog 2400QT loader on 6060 AC tractor, need hose: \$1000. Truck bed for big truck, 9ft goose neck hitch: \$900. Willie Harrison **Jefferson** 678-231-8636

Case 944 corn head, good cond.: \$1600. Hyd. shop press: \$80. JD 9965, good cond: \$18,000. Ralph Nutt **Cordele** 229-276-5336

Deutz 6275 cab tractor 75HP, 3000 hours. Good condition: \$12,500 OBO. William Treadwell **Monroe** 770-841-0781

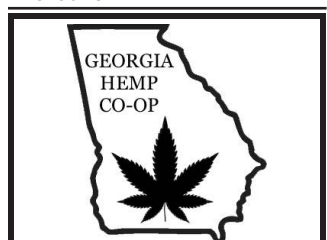
Farmall Super A w/plows, blades, cultivators plus extra equipment, lift on front and back, runs good: \$3000. Atwood Ledbetter **Cumming** 770-366-4615

Farm Services

38 years' experience: horse arenas laser graded, tree clearing, driveways built/regraded, gravel, barns graded, drainage correction, trucking, demolition. Luke Butler **Braselton** 770-685-0288

42 years of experience. Bush hogging, grading, post holes, aerating, discing, seed and fertilizer spreading, etc: \$50 per hour, 4-hour minimum. Rick Allison **Buford** 678-200-2040

Ag/Farm fencing of all types installed and repaired. 12 yrs full time experience. Land management services: consulting, mowing, seeding, food plots, and wildlife habitat. Casey Kent **Good Hope** 678-446-8520



Are you interested in farming hemp? For information: rules, growing supplies, biomass or CBD oil production and equipment. For questions call Richard 404-858-3336 **Ellenwood**

Bush hog, rotary mow, garden and food plot, harrow and plow, bale square hay. Monroe County area. Jimmy Waldrep **Forsyth** 478-951-5563

Bushhog your field or pasture and till your garden or food plot. Larry Boatright **Dallas** 678-386-1466

Compact tractor work. Bush hogging, tilling, disc plowing, loader work, food plots, chainsaw work in Coweta, Fayette & surrounding counties: \$40/hr. Jeff Hufford **Senoia** 678-215-7428

Custom land clearing for barns, pasture or residences. Leave property clean. Demolition. Laser grading pads for barns, homes or riding arenas. Build/refurbish driveways. Insured. Bill Butler **Atlanta** 770-231-4662

Farm 911 Signs-Farm Safety and Emergency Signage. An information source for greater peace of mind. Website: www.farm911signs.com Daren Sue Truex **Cumming** 678-628-6767

Forestry mulching and underbrushing. Land, lot, trail and overgrowth clearing. Fence and survey lines and pasture reclamation, etc. Kristy Jarrett **Baldwin** 706-391-5177

Looking for someone to operate a Drag-Line OPR 405 Koreing 1/1/4 bucket for farm pond. Alonzo Walden **Glenville** 912-266-4092

Forestry mulching, excavating, Site prep, dirt work, land clearing, ditch cleaning, retention pond cleaning, etc. Jason Miller **Rocky Ford** 912-667-1487

Lakes/ponds built & repaired, new pipe systems, land clearing, grading, creeks rerouted, drainage problems, wet lands restoration, bush hogging, homesites. Tim Harper **Peachtree City** 770-527-1565

Loader/backhoe, grading, bush hogging, aeration, tree cutting, branch trimming, pruning, lawn mowing, leaf mulching, chain saw & blade sharpening. Rockdale and surrounding counties. G. Kelecheck **Conyers** 770-597-4878

Specialize in wood fences, wire fences, arenas. Install. Good pricing. Over 25 years' experience. Prompt Service. Dan Gilbert **Roswell** 229-325-3163

Tractor mowing and bush hog work, 45 mile radius of Fitzgerald, GA. Minimum hrs needed. J. Weeks **Fitzgerald** 912-309-5288

Would like to grow hemp seedlings, clones on a contract basis for hemp farmers in GA/AL/SC/NC/FL. Can deliver, 30yrs greenhouse experience. Tim Miller **Rayle** 706-401-0880

For Advertising Guidelines and Category rules visit agr.georgia.gov.

FARM TO SCHOOL: Making squash cool in Elbert County schools

Editor's Note: The Georgia Farm to School Program is a partnership of the Georgia Department of Education, the Georgia Department of Agriculture, Georgia Organics and the Georgia Department of Public Health. Farm to School is an effort to bring locally grown foods to schools and educate children about nutrition and agriculture. For more information, go to www.gafarmtoschool.org.

By Jay Jones

jay.jones@agr.georgia.gov

School System: Elbert County School District, Elberton

Meals served: 780,828 (2018-2019 school year)

Number of Students: 3,050

Most popular menu items: Squash chips and dip; Buffalo cauliflower; Tomato and cucumber salad; Apple and kale salad with vinaigrette

From nothing to something is how Bridgette Matthews describes the Farm to School program at Elbert County Schools. As the nutrition director of the northeast Georgia school district, Matthews believes the possibilities are endless in teaching about Georgia-grown food and good nutrition.

Take for example third-grade students learning division using pecans and muffin tins or grasping the concept of fractions with an ice cream sundae recipe.

"If you have 24 pecans and you're going to divide them six ways, how many pecans go in each of those muffin tins sitting in front of you?" she said. "We teach it hands-on where

they're learning those kinds of things with a visual, not just division up on a board or the formula, but actually being able to see that using Georgia-grown products. That's my rule. Whatever we do, it's going to be something Georgia-grown."

The district started Farm to School learning in 2015 with no resources or plan to start. The first program was a Harvest of the Month program where the cafeterias would spotlight an in-season Georgia fruit or vegetable. Matthews believed she could do more, but there was a lot of conversation among faculty and administrators on how to get nutritional learning into the classrooms.

"One of the things we wanted faculty and staff to know was that it was not something that was done on top of their curriculum. It wasn't something extra," she said. "There was a way that we could make it a part of the curriculum they were already teaching."

Since then, everyone has had a hand in cultivating the program. Matthews joined teachers in their planning lesson meetings, and soon teachers discovered new options for their students.

Second-grade students in the elementary school's gifted program were challenged this fall with a classroom project with squash. Students worked their research and opinion development skills in the lessons. Along with tending squash in the school garden, students had to present how they cared for them, what factors helped them grow best and compare different varieties.

The second part of the project was for students to vote on which squash recipe would be served in the school's cafeteria. The recipe had



Elbert County Schools Nutrition Director Bridgette Matthews provides a lesson in making a blueberry dessert during class at Elbert County Elementary School. Teachers incorporate recipes into their math lessons to help students visualize problems in division and fractions. (Elbert County Schools Photo)

to be healthy, fried squash was out, the district had to be able to purchase the ingredients and be able to replicate it in large amounts.

"We did it very democratically. Each student presented their recipe and argued why they thought it should be the best. We put them all on a tally sheet, and then the students voted," Matthews said.

The winning recipe was squash chips with dip – baked squash cut in thin coins, roasted with olive oil and Parmesan cheese and served

with a side of sour cream.

"It was a really, really neat lesson for the class, and I'm pretty excited about it," she said. "I'll tell you squash chips are now on our cycle menu because the kids loved it."

Matthews said Elbert County Schools' Farm to School program continues to grow. They have partnered with the Career, Technical and Agricultural Education department at the high school for classroom initiatives in the lower grades. A CTAE student is assigned to work with elementary students in school gardens and related lessons.

The school nutrition department has also begun a partnership with the Elbert High School FFA chapter called "Devil's Dirt." The venture creates composting materials collected from school cafeterias that FFA students will use in the high school's greenhouse. Matthews said composting will be another resource for teachers to use in their classrooms.

The schools are also looking for ways to market the Devil's Dirt compost to sell as a fundraising project to support the greenhouse, which in turn will be used to support agricultural and nutritional curriculum for the entire district.

"My daily work does really center around making Farm to School a part of everything that school nutrition does," Matthews said. "As we have progressed through the years, I realize just how important Farm to School is to our students."

DIY Hand Sanitizer

Hand sanitizer is hard to find on grocery store shelves due to the Coronavirus outbreak. Make your own with this recipe and items you have at home.

Ingredients:

2/3 cup Rubbing Alcohol: 99% Isopropyl
1/3 cup Aloe Vera Gel
Optional: 8-10 drops of your favorite essential oil scent

Directions:

To make:

Mix rubbing alcohol (99% isopropyl) and aloe vera gel together. Include optional essential oil. Put in a travel size bottle.

To Apply:

Put enough product on hands to cover all surfaces. Rub hands together, until hands feel dry. This should take around 20 seconds. Do not rinse or wipe off the hand sanitizer before dry.

Recipe courtesy of the Georgia Department of Public Health



JEFF REGISTER BUILDING & TRUSS



40' x 60' x 12' - Installed
Roof only, closed gables - \$8,300
Roof only, open gables - \$7,500

30' x 40' x 10' - Installed
Roof Only, open gables - \$4,500

Prices do not include tax and delivery

Office - 228-678-0971
Cell - 228-234-9115 or 228-234-7241

jregister@registermetals.com

Locations: 2811 26th Ave.

Gulfport MS and
Highland Home, AL

REGISTERBARN.COM

FARMERS & CONSUMERS MARKET BULLETIN (ISSN 0889-5619)

is published biweekly by the Georgia Department of Agriculture

19 Martin Luther King Jr. Drive
Atlanta, GA 30334-4250

404-656-3722 • Fax 404-463-4389

Office hours 8 a.m. to 4:30 p.m. Monday – Friday

Gary W. Black, Commissioner MARKET BULLETIN STAFF

Julie McPeake, **Chief Communication Officer**

Amy H. Carter, **Editor**

Jay Jones, **Associate Editor**

Lee Lancaster, **Contributing Writer**

Stacy Jeffrey, **Business Manager**

Subscriptions to the Farmers and Consumers Market Bulletin are \$10 per year. To start or renew a subscription, go to our website to pay by Visa or MasterCard, or send a check payable to the Georgia Department of Agriculture along with your name, complete mailing address and phone number to PO Box 742510 Atlanta, GA 30374-2510. Designate "Market Bulletin" in the "for" line. To determine if an existing subscription is due for renewal, look for the expiration date on the mailing address label on page 1. Postmaster: Send address changes to 19 Martin Luther King Jr. Drive, Atlanta, 30334.

The Department does not discriminate on the basis of sex, race, color, national origin, age or disability in the admission or access to, or treatment in, its employment policy, programs or activities. The Department's Administration Division coordinates compliance with the non-discrimination requirements contained in Section 35.107 of the Department of Justice Regulations. Information concerning the provisions of the Americans with Disabilities Act, and the rights provided thereunder, are available from this division. If you require special assistance in utilizing our services, please contact us.



Georgie's Drive Thru Jefferson

Hello! I'm Georgie, the Georgia Grown mascot. I travel the state of Georgia promoting our state's No. 1 industry – agriculture! As you may know, Georgia is home to some of the greatest inventors and innovators in our country's history. One of those great innovators was Crawford W. Long. Originally from Danielsville, Dr. Long set up a medical practice in Jefferson where he decided to try and help his patients cope with the pain of surgery by putting them to sleep using ether. On March 30, 1842, he successfully sedated James Venable and removed a cyst from his neck. When he awoke, Dr. Venable said he felt no pain during the operation. As you can imagine, prior to that discovery, even minor surgery was nearly impossible. Jefferson is also famous for something else involving sleep: The World's Largest Mattress! Cotton Mill Interiors has been home to the record-holding mattress since 2013. It measures more than 3,000 square feet and weighs more than 4,500 pounds. The mattress is bigger than 2 king beds, 96 queen beds, 110 full beds, 156 twin beds, or 536 of Morty's pet beds! The owners wanted to build the oversized mattress to highlight the importance of getting a good night's rest.



Georgie the Georgia Grown Mascot visits Jefferson, home of The World's Largest Mattress. (Lee Lancaster/GDA)

GEORGIA GROWN PROFILE: Rhonda Griffin Fine Art

By Alexandra Woodford
Market Bulletin intern

Rhonda Griffin is the owner of *Rhonda Griffin Art* and paints canvases and found materials with colorful depictions of her favorite muses -- Georgia-grown commodities. Griffin obtained a Bachelor of Fine Arts from Valdosta State University, where she discovered her love for painting things around her. She lives in South Georgia and is constantly surrounded by agriculture.

"I stay very busy painting cotton bolls, peanuts, peaches, pecans and corn," Griffin said.

Alongside canvases, she also paints on reclaimed antique bricks that come from torn down, dilapidated buildings in Barney. The brick canvases – mostly depicting cotton and peanuts – are a hit among her consumers. She also paints watermelons, cabbage, citrus, squash, honeybees, florals (i.e. magnolias), and the occasional rooster. Griffin paints from a studio within her home and sells her pieces at fine art shows, agriculture-related shows, and retail stores in Tifton, Albany and Hahira.

Griffin first heard about Georgia Grown through the owners of *Burton-Brooks Orchards*, who are also Georgia Grown members. It is through this connection she was influenced to join. She wanted to start promoting her art to larger audiences including those with an interest in agriculture.

To Griffin, being a member of Georgia Grown means that she can promote her love of art "with subjects that are important to this program." She has benefited from her membership through networking opportunities and a successfully expanded target audience within the agribusiness sphere.

-Shop with and learn more about Rhonda Griffin and all of our Georgia Grown members through our website at <https://www.georgiagrown.com/>.



COOK GEORGIA GROWN: Pantry raid! Recipes for social distancing

Editor's Note: If you're a practical stocker who keeps certain staples in your pantry year-round, Georgia Grown Executive Chef Holly Chute has some recipes to help you avoid the grocery store a little longer. We wish you great health and good eating!

Beans & Rice Soup

Ingredients

1 qt chicken, beef or vegetable broth
1 can beans, any kind, drained & rinsed
1 cup cooked rice
1 Tbsp taco seasoning or 2 tsps chili powder, 1/2 tsp granulated garlic and 1/2 tsp dried oregano *
Optional: 1 cup cooked meat (chicken, ground beef or anything you have on hand)
1/2 cup diced onion and 2 cloves minced garlic sautéed with 1 Tbsp oil

Directions

In a medium pot, combine all ingredients. Bring to a boil then lower heat and simmer 10 minutes.

*You can use any combination of herbs and spices that you have on hand.

Pasta Surprise

Ingredients

1 lb cooked pasta, rotini, shells or elbows
2 cups cheese sauce (recipe below)
1 pkg frozen mixed vegetables
Salt & pepper
Optional: 1/4 cup dry ranch dressing mix

Directions

Combine cream sauce, ranch seasoning if using, and vegetables in a medium pot. Heat on medium-low heat until vegetables are hot. Add pasta to pot, mixing well. Adjust seasoning. Serve hot.

Cheese sauce

Ingredients

2 cups milk
1/4 cup butter
1/4 cup flour
1/4 cup grated parmesan or 1/2 cup grated cheddar or pepper jack

Directions

Melt butter in a small pot over low heat. Whisk flour into butter, stirring to combine. Cook, stirring for 1-2 minutes, then slowly whisk in milk, stirring to avoid lumps. Bring milk to a boil then turn off heat. Season with salt & pepper. Add cheese, mixing until melted.

Peanut Butter & Jelly Quesadillas

Ingredients

1 5-inch flour tortilla*
1 Tbsp peanut butter or any nut butter
2 tsps jelly or jam
1/2 tsp butter

Directions

Spread peanut butter and jelly over one half of tortilla. Fold tortilla in half. Heat small skillet over medium-low heat with 1/2 teaspoon butter. When butter sizzles, put folded tortilla in skillet. Cook about 2 minutes per side or until golden.

*You can use any size tortilla that you have, just increase amount of peanut butter, jelly and butter. You can also substitute cream cheese for peanut butter and add fruit if desired.

PEACHTREE CORNERS
Town Center 6:30PM - 9:30PM PEACHTREECORNERSGA.GOV

LOCAL VENDORS + LIVE MUSIC + MORE

NIGHT MARKET

MAY 8 | JUNE 19 | JULY 10 | AUGUST 7 | SEPTEMBER 11 | OCTOBER 9

CALLING ALL FARMERS MARKET VENDORS:

Interested in displaying homegrown and handmade items at the Peachtree Corners monthly Night Market?

Find details and apply here:
eventeny.com/events/The-Night-Market-407/

MULCH AND FERTILIZERS

100+ rolls 5x5 net wrap hay mulch, go rained on: \$25/roll, can load. David Cannon **Elberton** 706-498-4020

Aged horse manure mixed with shavings: \$5 per load. Can load with tractor. M. Hight **Macon** 478-960-2008

Aged horse manure, Marietta west Cobb County, easy access, you load and carry. Kerry Beaver **Marietta** 770-714-7364

Mulch hay: \$2.50 bale. Kermit Simmons **Jefferson** 770-867-7550

Round bales of mulch hay, barn kept, 600 pound poly fertilizer spreader, great condition: \$500. Phillip Merk **Commerce** 706-476-4747

Screened Ag Wood Ash: Starting at \$150 per truckload. Delivery included (22-24 tons) depending on location and mileage. Analysis available. Chris Browne **Lexington, SC** 803-206-4563

POULTRY LITTER/COMPOST

Chicken litter spreading. Layer hen manure w/o bedding. UGA tested: \$35 per ton delivered, \$10 per ton spread. Andrew Rodriguez **Greensboro** 678-777-7990

PLANTS, TREES AND FLOWERS

Advertisements selling officially protected plants must include a permit to sell such plants. Ads submitted without this permit will not be published. For information on the sale or shipment of protected plants, visit www.fws.org/Endangered/permits/index.html or call the U.S. Fish and Wildlife Service, 404.679.7097. For questions about ginseng, visit <https://www.fws.gov/Endangered/permits/index.html> or call the U.S. Fish and Wildlife Service, 404.679.7097.

2019 Chartreuse, Candy Cane, Red Lime, Lavender and Scarlet Zinnia seeds: 50 for \$3 (cash) + SASE. Text only. Donna's Blossoms **Ranger** 706-618-3890

4in perennials, 350 varieties: \$1.50 ea., including helleborus. Also 1 gal. grafted Japanese maples: \$20-\$25. Display garden. Selah Ahlstrom **Jackson** 770-775-4967/770-714-9233

Azaleas: large-growing azaleas in 1 gal pots, all colors: \$2.50ea. Jack Maffett **Montezuma** 478-472-7133/478-954-2111

Brown Turkey, Celeste figs, Christmas roses (Helleborus), confederate roses: \$5. Thornless blackberries, beautyberries, hydrangeas: \$3.50. Fig cuttings, dewberries: \$2.50. Free Liriope. C. Houghton **Marietta** 770-428-2227

For sale: Sugar cane POJ: 30 cents per stalk. Robert Buchanan **Plains** 229-591-0997

Gardenia plants: Healthy, well-filled plants, 3ft+ tall, large-bloomed variety: \$20. John Anding **Roswell** 770-552-1405

Gloriosa lily bulbs: 3ea per pk: \$6.50, red & yellow, limited supply.. Charles Parrish **Vidalia** 912-583-2537

Lenten roses in bloom: \$6 each; Pachysandra ground cover: \$10 for 50 plants. Carol Olson **Marietta** 770-490-5685

Native Azaleas: orange, yellow, pink, white, red: \$8 and up. Joan Adcock **Newnan** 770-251-2613

Skid Steer Nursery Container Claw, Hydraulics, picks up 15-25gal. Pots: \$1000. Frank Howell **Kite** 863-944-0900

SEEDS

Advertisements selling seeds must include a current state laboratory report (fewer than nine months old) for purity, noxious weeds and germination for each seed lot advertised. Ads submitted without this information will not be published. For more information regarding certified seed, call the GDA Seed Division, 229.386.3557.

Devil's trumpet, touch-me-not, mullein pink, morning glory, hibiscus, four-o'clocks, money plant: \$2 cash/tsp +SASE; mole bean, other. E. Beach 2966 Cardinal Lake Cir **Duluth GA** 30096 770-476-1163

Old timey cayenne, rooster spur, peter pepper, gourd seeds. 25 seeds: \$2 pk. SASE Terry Madaris 2017 Cloud Springs rd, **Rossville, GA** 307 41 423-883-7264

Old timey hot cow horn, red peter & habanera pepper seed; German pink & rutger tomato seed: \$1.00pk w/SASE. Amory Hall 130 Ellison St **Maysville GA** 30558 706-652-2521

Red Castor bean or Loofah seeds: \$3 per 20 or \$10 per 100. Cash and SASE to J. Shelnett, PO Box 1212, **Loganville** 30052

Tifton 9 Bahia grass seeds for sale. Georgia certified and non-certified. James Gaston **Americus** 229-938-9115/229-331-0570

Zinnias mixed, August lilies, poppies, hibiscus, cosmos, amaryllis seed: \$2Tbsp+SASE. Loofah seeds, 6/\$1. Century plants, \$10+postage. G. Ward 4496 Fowlstown Rd **Attapulgus** 39815 229-465-3641

FIREWOOD

Firewood must be cut from the advertiser's personal property. Ads for firewood must use the cord when specifying the amount of firewood for sale.

Allwoods firewood processor with 20ft conveyor belt: \$14,500. James Watkins **Toccoa** 706-599-7986

Seasoned firewood. Oak: \$125/half cord. Hickory or Pecan BBQ wood: \$145/half cord. Fatlighter sticks: \$10/bundle. Delivery available. Bob Lewis **Fayetteville** 770-461-4083

THINGS TO EAT

100% sugarcane syrup, no corn syrup. Three 25.4 oz bottles shipped: \$44 total. paypal.me/parrishcanesyrup. Ben Parrish **Statesboro** 912-536-2200



**Morgan County 4-H
Vidalia Onion Fundraiser**



Pre-Paid Orders ONLY!

Order Deadline:

May 12th, 2020



Name: _____ Address: _____

City: _____ Zip: _____ Home # _____ Cell # _____

E-Mail: _____

*Onions will be harvested at the perfect time for best flavor. We can't rush mother nature; you will be notified with delivery dates which should be BEFORE May 20th. Orders must be picked up at the Morgan County Extension office.

Pounds per Bag	Price	Quantity	Total
10 # Bag Vidalia Onions	\$10		
25 # Bag Vidalia Onions	\$20		
50 # Bag Vidalia Onions	\$35		
10 # Bag Red Onions *Not Vidalia	\$10		

Mail orders to:

Morgan County Extension Office
440 Hancock Street
Madison, GA 30650

*please make checks payable to:
Morgan County Extension/4-H



Grand Total Due: _____
Total Paid: _____
Date Paid: _____
Receipt #: _____

*All proceeds are used to provide educational programs, materials, 4-H scholarships and awards. Questions?? Contact Shannon Cagle at scagle@uga.edu or 706-342-2214

2019 pecan halves for sale: \$9 per lb., plus shipping. Jessie Arnett **Tifton** 229-382-6517

2019 pecans ready to eat, mostly halves: \$10lbs. No shipping. Raymond Gilbert **Madison** 706-342-3623

2019 Pecans, shelled and cleaned, ready for freezer: \$11 per lb.; 2019 Black walnuts, shelled and cleaned: \$20 per quart. P. Griffin **Clarksville** 706-768-8417

All natural Angus beef half or whole, grass raised, non-GMO grain finished: \$3.35lb hanging wght., includes processing, cut to your request. Tom Brown **Canton** 404-259-0998

Grass fed or grain fed beef ¼ or ½ wrapped to order, 3.50lb hanging wt. Plus processing web. Visit www.mcmichaelangusfarm.com. Jason Cox **Social Circle** 404-925-5412

All natural Black Angus beef. Sold by quarter, half, whole. No steroids, antibiotics or hormones. Grass fed/grain finished. Donna **Commerce** 770-596-3538 Facebook: Apple Valley Angus

Freezer beef: grass-fed Black Angus (no antibiotics, hormones), cuts and ground beef packages: \$400 for 40lbs; \$760 for 80lbs. Arthur Ferdinand **Palmetto** wstrvlr@bell-south.net 404-867-8773

Marview Farms provides grass fed and pastured beef, pork, lamb, and goat, free-range eggs and chickens. Fernando Mendez **Arabi** 786-210-6544 www.MarviewFarms.com

Water-ground meal, whole wheat flour, grits; will grind your grain: \$5 per 5 lbs. +postage. Mike Buckner **Junction City** 706-269-3630

ODDITIES

Gourds, many varieties, Martin gourds fixed & ready to hang. At farm or shipped to you. Charles Lang **Cordele** 229-406-5039

Lucky buckeyes: \$4.25/doz. Planting buckeyes: \$5.25/doz. Instructions included, please include postage. Jules Simmons 495 Royal Oaks Ter. **Stone Mountain, Ga.** 30087 828-226-4700

HANDICRAFTS AND SUPPLIES

4-leaf clovers, laminated. Hard to find. Excellent quality and very reasonable, (S.M.L.). A special gift for friends and family. Leave message. Chris Colley **Loganville** 770-466-2173

All types of chair caning, repairs & refinishing. James Lewis **Perry** 478-987-4243

Aprx. 22lbs quilting scraps, large and small: \$35. Pick up only. James Pinyan **Douglasville** 770-634-7152

Carpenter bee traps, handmade, ready to use. Non-toxic, environmentally friendly: \$8 each. Shipping available. Discounts for quantity purchases. Call or text. John Thornton **Screven** 912-207-6369

Chair and rocker caning of all kinds; also wicker and rattan repair. 40 years of experience. Duke Dufresne **Statham** 770-725-2554

Memory Bears made out of your loved ones clothing. Call for more information. Sherry McDaniel **Buford** 770-366-1306

For Advertising Guidelines and Category rules visit agr.georgia.gov.

Find Georgia Agriculture Online! www.agr.georgia.gov

@GeorgiaGrown: <https://twitter.com/>

@lamgeorgiagrown

www.facebook.com/georgiagrown

Georgia Grown: <https://www.pinterest.com/GaDepAg/>

Notice

Ads for the April 22 issue are due by noon, April 10. Ads post online 13 days prior to the first publication date selected.

HANDICRAFTS AND SUPPLIES

We do chair caning. Donald Becker **Tiger** 770-807-9783

FARM ANTIQUES

1910 butcher block for sale. Antique table, chairs, and two side boards. Joe Webb **McDonough** 678-986-2048

Cane mill by Chattanooga Plow Co., model No. 13 (improved). Needs 1 bearing cover and 1 feed cover: \$450. David Brock **Buena Vista** 229-937-5774 briarwod@windstream.net

Civil war era grist mill grinding stone-top stone with metal gear, very large. Have post card picture of mill dam from early 1900's. R. Burrell **Waleska** 770-574-2404

Computer scales 30lb capacity, equipped with an automatic compensating device, patent 1913 Dayton Ohio. Malcolm Talley **Rome** 706-584-1724

Farm, school and church bells for sale. Would also like to buy a train bell. Shane Burnett **Mansfield** 770-827-2240

Gordon jars, 1 gal and 2 gal., perfect condition: \$100ea firm. Winifred Hall **Barnesville** 404-993-0136

N.W. Ga. Rome area 100+ year old farm bill heads, almanacs, school photos, seed store paper ads etc. Bill McGraw **Watkinsville** 706-614-0867

OTHER

(2) Rinnal vent free wall propane heaters, 5600 BTU: \$250 obo; 7900-29000 BTU: \$750 obo, both: \$900. Johnnie Rozier **Warner Robins** 478-922-6431

1000 gal fuel tank: \$800; 270 gal: \$200. Brett Fausett **Dawsonville** 706-429-8491

2 Electric wall heater new 5100 BTU: \$50 each; 2 Metal 23x3 new Red: \$20 each; 3pt hole digger, 9inch: \$525. Roger Swafford **Talmo** 404-402-7673

2 goat stands with head gate, 21ft martin gourd pole with 12 plastic gourds, 50lbs coal. Slate Long **Madison** 706-318-0402

250 gal propane tank, used, for sale. Tim Brooks **Maysville** 706-983-0457

250 gallons of used motor oil from tractors, etc. in 55 gal plastic drums. No charge, you pickup. Syd Lawson **Mount Airy** 706-754-4991

4 Tires 245/75/16 LT: \$100 for all; Plastic and metal barrels: \$25 each. Ronald Rush **Franklin** 706-675-3417 or 706-812-5271

5' chain link fence wire, different size rolls, total over 1200', used: \$875 OBO. Sam Saliba **Marietta** 770-514-1431

9 rolls, 6 mil 12x100', 10 opening slides for mechanical 5000 transplanter, new: \$30ea obo. Paul Shellnut **Americus** 229-938-6413

91 Antique books, manuals, pamphlets, catalogs & literature of misc. farm equipment. Sell as single package, 30 yr collection: \$300. J. McKinley **Thomaston** 706-647-3800

Black Bart II fireplace insert: \$350. B. Maynard **Martin** 706-865-5945

Blue bird boxes made to Audubon specs: \$20 ea.+ shipping or pick up at my home. C. Morris 1095 Admiral Xing **Alpharetta** GA 30005 404-405-1084

Coachman Quin 33', 1975 travel trailer 5th wheel, sleeps 6, A/C, refridg+ freezer, 3 way remodel6526 in good condition: \$2500. Matt Mammoth **Fairburn** 770-969-0151

Drip tubing, 1 gallon per hour, in-line emitter, 2 foot spacing, 10 cents per foot, minimum purchase 1,000 feet. John Mateyak **Ball Ground** 770-289-8665

Egg cartons 55ea, 18 count some new, all good condition: \$40. Doyle Blankinship **Villa Rica** 770-361-5376

Frost protection row covers: \$200; potting trays: \$25; 1300 9.5x15.5' cardboard flats: \$250. Jason Amstutz **Resaca** 706-299-3033

Fuel tank 500 gal on slides with pulling attachment: \$350. John Prince **Macon** 478-781-7685 or 478-258-6391

Fuel tank 500 gal, used on skids, no pump: \$100 Carlos bagwell. **Alpharetta** 770-827-7366

Metal barrels, 20 gal-55gal plastic barrels 55gal stainless steel F.G.; totes 275gal-330gal totes. Tom Allanson **Cumming** 678-231-2324

Propane tanks: (1)100lb, \$80; (1)30lb.: \$40. Both in good condition. Larry Dove **Franklin Springs** 706-498-3438

Seed cane and sugar cane kettles for sale. Ray Freeman **Dublin** 478-272-1307

REAL ESTATE

Realtors or anyone holding a real estate license may not advertise in this Category, unless advertising personal property. Farmland advertised must be owned by the subscriber placing the ad.

FARMLAND FOR SALE

+88 acres: pecans, pasture, woods, little pond, deep well, 50 gal pressure tank, old sheds, workshop, tractor, storage, electricity, beautiful homesite: \$335,000. C. Lightfoot **Macon** 478-954-1295

10 acres mountaintop ridge with spectacular views. Estate sized lot with privacy and convenience, paved road, electricity. Text preferred. Tim Miller **Towns County** 706-401-0880

116 acres with 83 acres open land on paved road. Borders I-75 and Houston County line: \$3000 per acre. Lee Bailey **Dooly County** 229-239-0537

12 acres mature timber over 900' dirt road frontage has well, septic, power, five mins from Clarks Hill Lake and Gills Point Park w/boat ramp: \$60,000 R. Tallant **Cumming** 770-887-4290

155-acre farm, house, Hwy 341, 2 metal buildings, 3 ponds, fenced. 103 acres irrigated pasture, hunting: \$450,000 (\$2,900/acre). Olin Wooten **Telfair County** 912-375-3366

16-acre farm w/3000sq-ft house near Americus. Pecans, pine, hardwood. Unfinished upstairs. Exterior painted, 30yr roof 17/18, beautiful, private: \$124,000. Wayne Badie **Sumter County** 912-590-5859

16.6 acres, fenced, pasture, hugh barn, 3br/2ba house, shop, 1000ft creek, city sewer and water, near Cornelia Walmart, can divide: \$349,000. W. Quarles **Habersham** 706-499-2718

160-acre farm, 50 acres irrigated, 100 acres woods, 3BR, 1 bath house, new roof: \$450,000 (appraised \$470K). Eddie Brannen **Miller County** 770-362-5535

19+ac, 2/1 cabin joins 16,700 ac National Forest-Gravity fed water, power plus generator switch, deer, bear, boar, fox: \$250,000. In Conservation Program, taxes: \$120yr. V. Sloun **Rabun Co** 404-538-5555

19.9 acres w/two springs, creek on rear property line, 13 acres pasture, rest original hardwoods, deer & turkeys, paved rd., frontage, city water: \$195,000. E. Dennis **Franklin** 770-880-8960

20 acres, 2 acre pond, partially wooded, approx. 300ft rd frontage, paved rd.: \$20,000 per acre. Alvin Johnson **Snelville** 770-388-9347

20.25 acre horse farm: Barn, pasture, large trees, creek. Owner financing, small down payment. R. Lazenby **Newborn** 770-786-5341

240 acres, road frontage, mostly wooded, creek, barn, deer, turkey. Doug Storey **Chattooga County** 423-396-3028

23 acres with 1/4 mile road frontage, lg home, two out buildings, active stream, in conservation program, near Ellenwood, low taxes: \$490,000. Hayden McClure **Clayton County** 678-772-4008

28 acres w/barn; 5BR, 3 1/2 B brick; 2BR, 2 B brick; 800' rental house, 3 mobile home spots: \$890,000 OBO. Edgar Land **Gilmer County** 706-273-0665

40 acres timberland. Lays well. Mobile home with well and septic. Road frontage. Great hunting: \$4900 per acre. Owner financing. Dennis Botoms **Haralson County** 770-889-5235

43 acres on US Highway 411, 406ft road frontage. Deer, turkey, hayfield: \$3500 per acre with 10% down. Owner financing. Paul Smith **Floyd County** 706-331-6614

45.5 acres, half open, rest woods, spring and stream, fronts State Hwy 37 near Morgan: \$3000 per acre. Jim Andrews **Calhoun County** 229-835-2483 jtajr51@yahoo.com

47 acres: half pasture, half woods, bold spring, ideal lake-site, timber value, historic home 5/2 w/9 fireplaces: \$10,500/acre. Keith Norris **Milner** 770-229-8319

50ac: house, work shop, livestock barn, paddocks, 40x400 poultry house, rustic cabin on pond; recent survey, 8 miles 85/985 **Gainesville Hall County** B. Roberts **Canton** 678-462-3123

6 acres beautiful land, gated property, power and water. Nice home site: \$125,000. Charles Chastain **Pickens County** 770-893-9013

60 acres fenced with springs and stream, lots of privacy, potential home sites plus mountain top view. Text or call. Danny Reed **Madison County** 706-202-7494

9.56 acres paved road, full bath, well, septic tank, electricity, deer, turkeys: \$69,900. **Cassville** 770-655-3980

60ac timberland, mixed large timber flat/rolling, can divide 10a, 23a, 28a, all with spring elect. frontage on dead end paved road near Athens. L. Sanders **Oglethorpe County** 706-759-3871

75+ Wilkes Co., paved rd, paved drive, 2 ponds; barn, house, site barn fenced. Possible owner financing: \$450,000. Jerry Shore **Wilkes County** 770-286-2494

92.66 acres, ranch & home, zoned A-1, fenced, creek, water system, garage/barn, panoramic views, high elevation, search Facebook marketplace, and www.buyowner.com/BUY213884: \$599,000. Carl Kelley **Madison County** 706-318-1740

97 acres in Dooley Cty, pastureland with 3 stocked lakes totaling 20 acres. Rolling hill-top on paved road. 1 mile east of Byronville: \$3000 per acre. M. Lee **Tifton** 229-392-1182

Christmas tree farm in business 45yrs. Choose/cut, Fraser, other fir, pines. 26acres, home, barns, 100 GPM well, est. irrigation system, lake. E. Worthington **Henry County** 404-428-1050

FARMLAND FOR RENT/LEASE

72 acres of good grazing land for rent in Pulaski County. For more info, call or text. N. Smith **Hawkinsville** 478-230-1745

Lease on hunting land in Laurens County for next year. E. Hendricks **Laurens County** 478-676-3513

Get your

GEORGIA grown

apparel today!

www.georgiagrown.com



Market Bulletin Farmland Ad Form

Ad guidelines: Only farmland of 5 acres or more may be advertised. Include price, acreage and county where the property is located. All property must be for sale by the owner. Limit descriptive terms to property characteristics or structures. A maximum word count of 25 – including name, address, phone number and your city of residence – is permitted in Farmland ads. Only one ad per subscriber per issue. You must be a paid subscriber to advertise in the *Market Bulletin*.

Subscriber number _____ County _____

I hereby certify that this notice meets all the necessary requirements for publication in the *Market Bulletin*:

SERVICES
BOARDING FACILITIES

The Georgia Animal Protection Act requires boarding and breeding facilities to be licensed. A current license number must be submitted with notices for publication in the "Boarding Facilities" category. Notices submitted without this information will not be published. For more information, please call the GDA Equine Health Division, 404.656.3713.

Full care stall: \$500; pasture board: \$350 available. Your choice feed, 12X12 stalls, arena, trails, H/C wash rack, 24/7 supervision. Swell Stables **Ball Ground** www.swellstables.com 404-804-8009

Sunny Brook Stables. Dry-full board available. Great facility in the heart of East Cobb. Boarders and trainers welcome: \$300-\$700. Joanna Bednarz **Marietta** 404-617-4381

Wild Oak Horse Farm. Offering boarding, training, lessons. Check us out at: www.wildoakhorsefarm.com.fb A. Dickson **Loganville** 404-784-7409

EMPLOYMENT

Farm Help Needed and Seeking Farm Employment ads must be related to agricultural farm work. Ads submitted for domestic help, companions, baby sitters, housekeepers, etc. will not be published.

FARM HELP NEEDED

Energetic and detail-oriented person to do housework and light garden work part-time at old farmhouse, reference required. K. Hendricks **Atlanta** 404-307-1784

Highly motivated, Honest, works with others. Duties include operating farm equipment and general care of property. Housing included with small salary. Drug test required. William Corey **Conyers** 770-605-6107

SEEKING FARM EMPLOYMENT

Looking for local farm work. Equipment operator, Class A CDL, certified carpenter. Will relocate, if it's worth it. Michael Martin **The Rock** 678-416-1424

GEORGIA GROWN BUY, SELL, SUPPORT GEORGIA GROWN georgiagrown.com

WANTED

Items wanted in all Classified Categories will be advertised here.

1 or 2 row silage chopper that runs on 540rpm. Any brand ok. Lee Fullbright **Appling** 706-664-5145

10-foot grain drill, single or double disk. Text pictures to Brad. J. Yuille **Martin** 770-367-5092

2004 Komatsu backhoe, with cab 4wd, 4/1 bucket, 86 hp, approx: 2470hrs, last seen in 1/15/20 issue. Tim **Carrollton** 770-328-0729

600 or 800 Ford, 3000 or 4000 Ford or any diesel with 3 point hitch. Nelson Massey **Conyers** 770-483-2639

Cash paid for running and non-running diesel tractors and skid steers. Have trailer with winch. Also buys back hoes. Joshua Fowler **Dacula** 404-886-7423

Craftsman lawn mower, 26hp, 54" cut, good condition: \$1150. C. Smith **Ranger** 706-602-9607

Denmark Feist or Mountain Feist, white body, brown head, want to buy. Larry McDonald **Cedartown** 770-712-7474

Farmall M-TA Torque amplifier hydraulic 3pth in good condition, field ready. L. Kinsley **Perry** 478-714-9900

Hwy. Breed chickens, games, batams, ducks, pigeons, gunnies ext at reasonable price. Johnny Carney **Danielsville**

I am looking for hunting land to lease within a 50 mile radius of Grovetown (Columbia County). Victor Johnson **Grovetown** 706-833-9685

Looking for any type of farm signs: fertilizer, feed, seed, etc. Phone or text. Joe Sarchet **Burford** 770-292-8858

Looking for pasture to lease in Hall or surrounding counties. Cody Guyton **Gainesville** 770-561-7265

Looking to contact wild herb hunters in Douglas County. If you have knowledge of wild herbs, contact me via email. Fred E. Crews **Winston** fcrews925@gmail.com

Model 148 or 48 John Deere front end loader. Earl **Barnesville** 770-358-0833

Need pasture land for cattle. In Lavonia. Would like to find land in Franklin, Hart or Stephens County. James Wilson **Lavonia** 706-599-0099

Need rear wheels, not tires, for Ford 1900. Size is 10"x24" with 4-bolt areas in middle of wheel. David Harrison **Bogart** 770-380-8772

Seeking up to 5 gallons of mayhaws for jelly-making. Neva NeSmith **Coolidge** 229-228-1780 or irvneva@earthlink.net

Three BB Red Bantam chicks, 7-8mo, One Bantam Buff Silky Rooster young. Robert Burch **Cadwell** 478-689-4218

Want a SuperA or 140 Farmall tractor, good condition w/planter & cultivating and all equipment to garden with. J.C. Clark **Waycross** 912-282-8533

Wanted 400lb beef calves. Ken Mallonee **Winterville** 7062025375

Wanted: (2) solid white male quails for sale. Levi Milstead **Armuchee** 706-238-9701

Wanted: 1 Watergate Muscadine vine. Will pay for vine and shipping charges. This is an old variety from Ison's Nursery. Lloyd Pritchett **Ellijay** 706-889-1641

Wanted: 14 foot litter spreader box and 20 foot cattle trailer in good condition. Larry Jarrett **Gillsville** 770-503-5024

Wanted: 48inch pallet forks to fit John Deere H310 loader. Global style attach; Also seeking 200-500 gallon fuel tank. Mike Bloodworth **Knoxville** 478-836-2535

Wanted: Calico Running Pea seeds. Ralph Ridley **Dalton** 706-537-9453

Wanted: Farmall Super A for parts or complete PTO and Flatbelt pulley assembly in good condition. No calls after 10pm. Dale Chester **Villa Rica** 770-364-1913

Wanted: Holstein Female between 1 and 18 months old. Must be 50% White & 50% Black and NOT sterile. Joel Wiley **Coolidge** 229-890-8888 Email: numberman4@yahoo.com

Wanted: plants, cuttings, start, Southern Belle hardy hibiscus, hardy hybrid Alstroemerias. Buy or trade. Lonnie Ward **Columbus** 706-325-5698

Wanting 2 or 3 Lady Amherst hens. William Barlow **Pearson** 912-850-4641

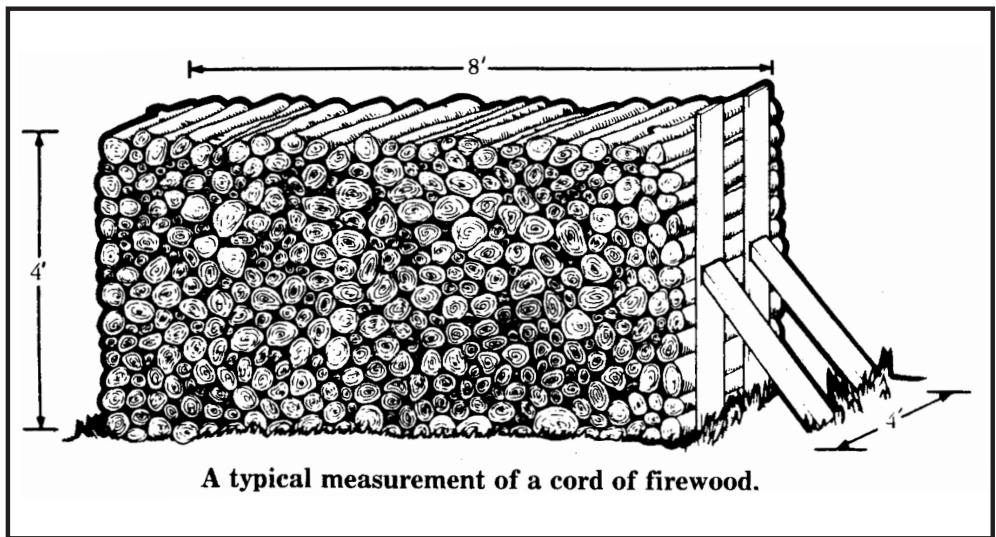
Wanting a pasture aerator. Looking for a 10 ft. wide aerator. Please call with information. Ron Ward **Elberton** 706-213-9175

Wanting non-running riding mowers, in NE Georgia. Can pay small price if complete and look good for parts. David Combs **Jefferson** 706-367-4107

Young black Beefmaster cows, 2-3y/o., can be bred w/calf, will consider heifers. Steve Pettit **Gainesville** 770-540-1870

Georgia Seasonality

Product	January	February	March	April	May	June	July	August	September	October	November	December
Apples												
Blackberries												
Blueberries												
Cabbage												
Cantaloupe												
Christmas Trees												
Collards												
Cucumbers												
Field Peas												
Green Onions												
Irish Potatoes												
Lima Beans												
Muscadines												
Okra												
Peaches												
Peanuts												
Pears												
Pecans												
Peppers												
Snap Beans												
Pumpkins												
Strawberries												
Sweet Corn												
Sweet Potatoes												
Turnips												
Vidalia Onions												
Watermelons												



A cord is defined as 128 cubic feet of wood stacked by the line or row in a compact manner with individual pieces touching; it can be four feet high, four feet wide (deep), and eight feet long, or any combination of these measurements (height, width and length) that yields 128 cubic feet.



Georgia Hemp Processor Permit Application Guide



Georgia Department of Agriculture, Commissioner Gary W. Black

agr.georgia.gov

Hemp Processor application documents are available on the Georgia Department of Agriculture (GDA) website at agr.georgia.gov/industrial-hemp-production.aspx

Please note that the grower portion of the Georgia Hemp Farming Act is still awaiting USDA Approval.

The initial Hemp Processor Permit fee is \$25,000, payable once the application has been approved.

- 1**  **Steps to apply for a Hemp Processor permit:** 
-
- 1** Obtain a \$100,000 surety bond.
-
- 2** If you intend to process hemp grown by a licensed Georgia hemp grower, obtain affidavits of the agreement or intended agreement with each grower.
-
- 3** Complete the application form and mail the completed packet to
- Georgia Department of Agriculture
Hemp Program, Room 210
19 Martin Luther King, Jr. Dr. SW
Atlanta, GA 30334
-
- 4** Once the GDA has notified you that your application qualifies you for a Hemp Processor permit, complete fingerprinting and background checks for all persons holding a beneficial interest in the permit (individual applicant, owner and key participants of a business). Instructions for completing the background checks will be available on the GDA website.
-
- 5** The GDA will notify you when all background checks have been accepted. The initial permit fee of \$25,000 is due at this point, and GDA will provide information on how to make the payment for this fee.



Georgia Farm Recovery Block Grant Application Information

Georgia Department of Agriculture, Commissioner Gary W. Black

farmrecovery.com

On March 18, 2020, the Georgia Department of Agriculture began accepting online applications for Georgia Farm Recovery Block Grant assistance from producers who experienced losses and expenses related to Hurricane Michael. All applications **must be completed and submitted by 11:59 PM on April 8, 2020**. Only online applications will be accepted.

This block grant program is designed to compensate producers for losses and expenses in seven categories of assistance: beef, dairy, fruit and vegetable, pecan, poultry, timber, and uninsured infrastructure. On the application you will see these categories referred to as commodities. The assistance provided through the FRBG will address losses and expenses not already included in an existing USDA program.

Register to Apply

on farmrecovery.com. After registering, you will receive an email to set up a password. Go to Applications > New Farm Recovery Block Grant to begin.

Below is a brief summary of application questions and required documentation. This information is not exhaustive, but intended to make producers aware of the required information. If producers wish to assist GDA in assessing their application, the department will accept additional documentation.

An exhaustive application worksheet can be found at farmrecovery.com in addition to frequently asked questions and a map of eligible counties.

Timber

Application Questions Funding Request Type

- Comprehensive: if you filed an IRS 4684 Casualty Loss Form
- 3rd-Party Certification: if you did not file a Casualty Loss Form, you may still request compensation for your loss.
- You will need to certify that the damage is at least 15% and provide certification of the damage by a

third party. This form is available at farmrecovery.com.

Damage

- Forest Type
 - Pine
 - Hardwood
 - Mixed pine/hardwood
- Maturity
 - .5 years – 15 years
 - 15 years to 30 years
 - 30 years +
- Total Acres in Parcel or Tract
- Fair Market Value as of 10/11/2018 (Comprehensive)
- Fair Market Value as of 10/11/2019 (Comprehensive)

Required Documents

- IRS 4684 Casualty Loss Form that was filed with the IRS (Comprehensive)
- Third-Party Certification of Damage file (3rd-Party Certification)
- 2018 Property Tax Assessment

Cattle

Application Questions

Conception

- Breeding age females in herd as of October 10, 2018
- Conception rates as a percentage - historical: October 9, 2017-October 9, 2018
- Conception rates as a percentage - post-hurricane: October 10, 2018-October 10, 2019

Mortality

Breeding age females that died as a result of Hurricane Michael

Required Documents

- Veterinarian Certification of Damage (GAFRBG-02)
- LIP Application (if you applied for LIP).
- Any forms or documents associated with Federal Crop Insurance and/or NAP.

Dairy Losses

Application Questions

Conception

- Cows in milking herd as of October 10, 2018
- Breeding age heifers as of October 10, 2018
- Conception rates as a percentage - historical: October 9, 2017-October 9, 2018
- Conception rates as a percentage - post-hurricane: October 10, 2018-October 10, 2019

Mortality

Cows in milking herd and breeding

age females that died as a result of Hurricane Michael

Disease

- Documented cases of mastitis month of September 2018
- Documented cases of mastitis month of October 2018

Performance Loss

- Cows permanently removed from milking herd (culled cows) following October 10, 2018
- Total milk produced (in lbs.) - historical: October 1, 2017 – November 30, 2017
- Total milk produced (in lbs.) - post-hurricane: October 1, 2018 – November 30, 2018
- Average number of cows in milk - historical: October 1, 2017 – November 30, 2017
- Average number of cows in milk - post-hurricane: October 1, 2018 – November 30, 2018

Required documents

- Veterinarian Certification of Damage (GAFRBG-02)
- LIP Application (if Applied for LIP is checked).
- Any forms or documents associated with Federal Crop Insurance and/or NAP.

Poultry

Application Questions

Destroyed Houses

- Square Footage
 - Type of Production
 - Insurance Receipts
 - # Days without birds after 10/10/2018
 - Were there birds in this house at the time of the storm?
- #### Damaged Houses
- Square Footage
 - Type of Production
 - Insurance Receipts
 - # Days without birds after 10/10/2018
 - Were there birds in this house at the time of the storm?

Required Documents

- Insurance Receipts for all houses listed above.
- Any forms or documents associated with Federal Crop Insurance and/or NAP.

Fruits and Vegetables

Application Questions

Damage

- Commodity

- Plasticulture Acres Damaged
- Bare ground Acres Damaged
- You will need to certify that the commodity had 15% loss.

Required Documents

Any forms or documents associated with Federal Crop Insurance and/or NAP.

Pecans

Application Questions

Damage

- Total Number of Trees as of October 9, 2018
- Number of Trees Lost

Required Documents

- Any forms or documents associated with Federal Crop Insurance and/or NAP.
- TAP Application (if Applied)

Uninsured Infrastructure

Application Questions

- Structure Type
- Commodity stored in structure
- Commodity source
- Sq. footage
- Value
- Cost of repair & reconstruction
- Amount received from insurance
- You will need to certify that the commodities stored in this structure sustained losses of 15% or higher
- Crop Insurance, NAP, and other USDA programs

Irrigation

Application Questions

- Commodities under this system
- Linear feet damaged/destroyed
- Value of this system
- Cost of repairs/restoration
- Amount received from insurance
- You will need to certify that the commodities under this system sustained losses of 15% or higher

Required Documents

- 2018 property tax assessment
- Any forms or documents associated with Federal Crop Insurance and/or NAP.

Questions? Please visit us online at farmrecovery.com. If your question is not answered there, you may submit additional questions to farmrecovery@agr.georgia.gov.

RURAL GEORGIA: Growing Strong

Mental health initiative addresses the emotional well-being of farmers

By Jay Jones
jay.jones@agr.georgia.gov

A tractor, an irrigation system or a new bull for breeding are all components for a successful farm. However, the one thing farmers may overlook is their own well-being. A new initiative by the University of Georgia Extension Service looks to address the mental and physical health of farmers and agriculture workers.

Recent health data is showing that depression stemming from stress or physical injury can weigh on farmers to the point where they become at risk of suicide. The *Rural Georgia: Growing Strong* initiative began in January to provide resources to people who need help.

Andrea Scarrow, Southwest district extension director, said a pilot program began with ag production meetings in January and February in her area where agents and farmers gathered to discuss crops and livestock. The pilot program started in Colquitt, Mitchell, Lowndes and Echols counties.

“The message to our farmers and their families is they are their own greatest resource on the farm,” Scarrow said. “So just as they would take care of their machinery and really take care of those resources, we want to support them in taking care of themselves as well.”

The Extension Service created information packets to hand to farmers that provide contact information to resources, such as the Georgia Crisis and Access Line (1.800.715.4225). The packets also included academic and professional materials to help farmers understand and deal with stress. Topics covered include stress and mental health, nutrition and physical health, finance management and youth development. All the resources provided are also available online at www.extension.uga.edu/rural.

Scarrow said the extension agents brought up rural stress to the farmers in a general ap-



Mental health experts from throughout Georgia and the nation met in Atlanta in December 2018 to strategize on the topic of rural stress. Sam Pardue, dean of the College of Agricultural and Environmental Sciences at the University of Georgia, requested the summit after reading a CDC study that showed that the suicide rate among farmers is 1.5 times higher than the national average. (UGA CAES File Photo)

proach. However, even with all the resources and data available, discussion about mental health and suicide is difficult to broach. As an ice-breaker, Scarrow said farmers and ag producers were offered free blood pressure checks during the production meetings.

“The response has been really good. We’ve not faced any pushback whatsoever,” she said. “It’s been well received, and so I think from this we feel comfortable building on it going forward.”

Extension’s concern for the well-being of Georgia farmers came from a 2018 study by the Centers for Disease Control and Prevention that showed farming had the third-highest suicide rate of any occupation. Additional research showed that in Georgia, the rate for farmers was about 51 per 100,000, compared with 14.9 per 100,000 for the overall population of workers.

Anna Scheyett, dean of the University of Georgia’s School of Social Work, did research

to find out more about the causes of suicide. The extension service used her research to develop this initiative. She reviewed 106 suicide cases between 2008 and 2015.

Scheyett explained stress could come from different places, and there is no easy answer as to why the suicide rate is higher among farmers.

Loss of a key relationship is one factor in Scheyett’s research. She said the smaller populations of rural areas mean that a person’s spouse or partner plays a significant support role. In many cases, the loss of a spouse was a significant factor in suicide cases.

“There were situations that the suicide happened after the spouse had been put in a nursing home, or the spouse had left or the spouse had died, so the relationship pieces are really poignant,” she said.

Physical health also affects mental health. Scheyett noted that an injury that keeps a farmer out of the field could be very stressful. She

pointed out that an inability to work due to a health condition means a loss of identity for many farmers and that can put them at risk.

Sheyett also said farmers could create stress on themselves by being too self-reliant.

“I think culturally farmers and farm families are incredibly independent and resilient, and they’re amazing. I admire them hugely,” she said.

“But that level of independence – ‘I’m going to solve this by myself when things get really bad and stressful’ – can put people at risk because they’re just going to keep working harder. And sometimes, that’s not the best thing to do. Sometimes, you have to take care of yourself.”

Scarrow explained that helping farmers deal with stress is nothing new to the extension service. Agents often are the ones farmers go to to talk about the problems they are facing. However, agents may not have information at hand to help. Scarrow added that the initiative is being done as much for extension agents as it is for farmers.

“In the past, they’ve had that experience in hard economic times where a farmer would share their woes and their stress with them,” she said. “Our natural response is to be empathetic and to say, ‘Yeah, it’s just tough,’ and maybe that’s not the right response. We have got to stay on the positive side of things, so we’re learning how to be the encourager when we’re in that position of listening.”

The extension service has several partners involved with the initiative including local medical providers, the UGA School of Social Work and College of Public Health, along with the Georgia Department of Behavioral Health and Developmental Disabilities and the State Office of Rural Health, a division of the Georgia Department of Community Health.

For more information, go to www.extension.uga.edu/rural.

COVID-19

Coronavirus update from The Georgia Department of Agriculture

What is it?

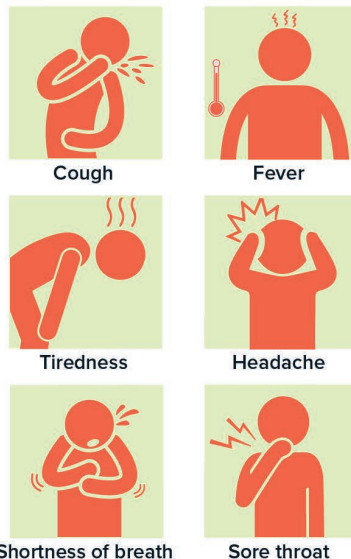
COVID-19 is the infectious disease caused by the most recently discovered coronavirus. Patients with COVID-19 have reportedly had mild to severe respiratory illness. Symptoms may appear 2-14 days after exposure. Seek medical advice if you develop symptoms or have been in close contact with a sufferer.

By the numbers

For the most up-to-date numbers including reported cases and infection spread, please visit the CDC and WHO websites listed in the “for more information” section.



Symptoms



Social Distancing

means putting space between yourself and others. CDC recommends staying at least 6 feet away from other people.

Prevention



What about my animals?

At this time, there have not been reports of pets or other animals becoming sick with COVID-19.

For more information, please review the following information from the CDC: [cdc.gov/coronavirus/2019-ncov/faq.html/#animals](https://www.cdc.gov/coronavirus/2019-ncov/faq.html/#animals) or find a quick link to the CDC FAQ’s on our website at www.agr.georgia.gov.



Who is at risk?

People of all ages can be infected by COVID-19.



Older people, and people with pre-existing medical conditions (such as asthma, diabetes, and heart disease) appear to be more vulnerable to becoming severely ill.

For more info

Centers for Disease Control
[cdc.gov/coronavirus/2019-nCoV/index.html](https://www.cdc.gov/coronavirus/2019-nCoV/index.html)
Different parts of the country are seeing different levels of COVID-19 activity. Stay up-to-date with the CDC.

World Health Organization
[who.int/emergencies/diseases/novel-coronavirus-2019](https://www.who.int/emergencies/diseases/novel-coronavirus-2019)
On January 30, 2020, WHO declared the outbreak a “public health emergency of international concern.” Stay up-to-date with WHO.