

FARMERS AND CONSUMERS

MARKET BULLETIN

GEORGIA DEPARTMENT OF AGRICULTURE • TYLER HARPER, COMMISSIONER • WEDNESDAY, FEBRUARY 5, 2025 • VOL. 108, NO. 3 • © COPYRIGHT 2025

Live poultry shows, markets suspended following HPAI cases in Elbert County

By Jay Jones

jay.jones@agr.georgia.gov

Georgia's poultry industry is grappling with a surge of Highly Pathogenic Avian Influenza (HPAI) outbreaks, prompting swift action from the Georgia Department of Agriculture (GDA) to contain the spread and protect the state's vital agricultural sector.

After reporting an HPAI case on Jan. 17 in Elbert County at a commercial facility, designated Elbert 01, GDA inspectors set up a surveillance and quarantine operations area within a 10-kilometer radius (6.2 miles) of Elbert 01. Within the operations area, GDA inspectors collected routine sampling from a nearby poultry facility, and a positive HPAI result was confirmed four days later by the USDA's National Veterinary Services Laboratory in Ames, Iowa.

The second premise was designated as Elbert 02 and located approximately 210 yards away from Elbert 01, the initially affected location. Elbert 01 had about 45,000 broiler



Georgia Department of Agriculture personnel responded last month to two confirmed Highly Pathogenic Avian Influenza (HPAI) cases in commercial poultry facilities in Elbert County that affected 175,000 birds. There have been a total of six confirmed HPAI cases in Georgia since the start of the current national outbreak in 2022. The Elbert County cases were the first involving commercial flocks. (USDA/File Photo)

breeders onsite at the time of detection. Elbert 02 had approximately 130,000 broilers onsite, according to the GDA.

The GDA's Emergency Management and State Agricultural Response Team were deployed immediately to Elbert 01 to conduct depopulation, disposal, cleaning, and disinfecting operations. According to the GDA announcement, those operations occurred concurrently at the second due to the close physical proximity and the positive detection at the Georgia Poultry Lab Network.

Depopulation of both Elbert 01 and Elbert 02 was completed in the initial 48 hours after detection. GDA Law Enforcement maintained the 10-kilometer perimeter around the affected premises.

"I want to thank our team at the Georgia Department of Agriculture and our partners, who have been working 12+ hour days during a holiday weekend in the bitter cold to protect our state's #1 industry and the farm families who

See *AVIAN FLU*, page 14

Georgia Grown launches tour for small businesses aspiring for larger markets



By Jay Jones

jay.jones@agr.georgia.gov

Small business owners across Georgia participated in a tour of last month's Atlanta Market organized by the Georgia Grown program. They said it was a valuable opportunity to learn about selling their products and whether they can move from local retail sales to national distribution.

Eighteen people signed up for the tour and walked through the market inside the Americas Mart complex in downtown Atlanta on the first day of the Atlanta Market. They talked with Georgia Grown members

David Goodson of Goodson Pecans talks with a tour group of small businesses during the Atlanta Market, a wholesalers market held in the Americas Mart complex in downtown Atlanta last month. The Georgia Department of Agriculture's Georgia Grown program organized the tour to allow business owners to see how the market works and whether they are ready to distribute their products to a broader audience. (GDA/Jay Jones)

participating in the market and asked questions.

The Americas Mart's operator, ANDMORE, annually holds trade shows in January and July. The Atlanta shows are among the largest wholesale trade shows in the world. Each show hosts over 50 floors of vendor booth space across three buildings and attracts retailers and designers from every state and over 60 countries.

Diana Sutherland, who guided the group through the market, explained that the idea for a tour came from Sarah Cook and Elizabeth Danforth of the Georgia Grown Domestic Marketing Program. They organized a similar tour with produce farmers in October when the Global Produce and Floral Show came to Atlanta.

Sutherland said a walkthrough of a large market can give business owners perspective on what direction they want to take and learn from those selling

See *ATLANTA MARKET*, page 14

UGA Ag Forecast predicts a mixed picture for agriculture in 2025

By Jay Jones

jay.jones@agr.georgia.gov

The University of Georgia's 2025 Ag Forecast released on Jan. 24 offered both promising and challenging projections for the state's agricultural sector, with economic headwinds and lingering effects from Hurricane Helene impacting farmers' bottom lines.

While Georgia's agriculture remains a significant economic driver, contributing \$18.3 billion and supporting 323,000 jobs, UGA Ag Economist Gopinath Munisamy warned of a challenging year ahead, with net cash income projected to plummet from \$3.4 billion in 2023 to \$1.9 billion in 2024.

The forecasters expect an economic slowdown in Georgia but not a recession. They estimate the probability of a recession at 25 percent. According to the Ag Forecast report, Georgia's economy is also expected to grow faster than that of the nation due to economic success, stronger population growth and favorable economic structure.

For Georgia agriculture, the forecasters estimate commodity prices to trend downward in the coming year before stabilizing in the next 3-5 years.



Two University of Georgia researchers work on a test parcel of peanuts at the university's Tifton campus. UGA released its 2025 Ag Forecast on Jan. 24, which showed peanuts among the top 5 commodities in Georgia by gate value, along with broilers, layers, cotton, and timber. (UGA-CAES/Jay Oliver)

See *AG FORECAST*, page 16

Advertise in the *Market Bulletin*

Classified advertisements in the *Market Bulletin* are free to subscribers and limited to one ad per issue per subscriber number. Ads run a maximum of two consecutive issues unless requested otherwise. Advertisements from businesses, corporations, dealerships, real estate agents or other commercial entities are not permitted. All items advertised must be farm-related.

Advertisers and buyers are advised to be aware of state and federal laws governing the sale and transfer of live animals. GDA rules also require the submission of certain documents attesting to the health and/or viability of livestock, plants and seed submitted for sale before ads for those items can be published. Those rules are posted online at <http://agr.georgia.gov/classified-ads-guidelines>. They are also summarized beneath the headers of all affected Classified categories in every issue of the *Market Bulletin*.

The Georgia Department of Agriculture does not assume responsibility for transactions initiated through the *Market Bulletin* but will use every effort to prevent fraud. Advertisers are expected to fulfill the terms of their offers. Failure to do so through either negligence or intention may require the *Market Bulletin* to refuse future ads.

Market Bulletin staff reserves the right to designate ad length and to edit for spelling, grammar and word count. Classified ads are limited to a maximum of 30 words, including name and contact information.

There are three ways to submit your ad.

Fax: 404.463.4389

Mail: Georgia Department of Agriculture
Attn: Market Bulletin
19 Martin Luther King Jr. Drive SW
Atlanta, GA 30334-4250

Online: www.agr.georgia.gov/market-bulletin

Please include your subscription number on all mailed and faxed correspondence.

Questions about advertising? Call 404.656.3722

Subscribe to the *Market Bulletin*

A one-year subscription to the *Market Bulletin* is \$10 and includes both print and online access.

To subscribe or renew an active account online visit agr.georgia.gov/market-bulletin to pay using a Visa or MasterCard.

To subscribe by phone, renew an expired subscription, update your address or report delivery problems call 404.586.1190 or 800.282.5852.

To subscribe by mail send a check or money order payable to the Georgia Department of Agriculture along with your name, complete mailing address, email address and phone number to:

Georgia Department of Agriculture
Attn: Market Bulletin
P.O. Box 742510
Atlanta, GA 30374

Call the Georgia Department of Agriculture

404.656.3600 | 800.282.5852
Avian Influenza Hotline 770.766.6850

Georgia Grown
404.656.3680

Food Safety
404.656.3627

GATE
855.327.6829

Plant Protection
404.463.8617

Equine Health
404.656.3713

Licensing
855.424.5423

Animal Protection
404.656.4914

State Veterinarian
404.656.3671

Fuel and Measures
404.656.3605

Market Bulletin
404.656.3722

Georgia Department of Law Consumer Protection Unit
404.651.8600 | 1.800.869.1123

Access the *Market Bulletin* online any time at
<http://www.agr.georgia.gov/market-bulletin>

FARM MACHINERY

Please specify if machinery is in running condition.

TRACTORS

135 Massey Ferguson, diesel, power steering, no defects, runs good: \$4975. James Sullivan **Vidalia** 912-537-4944

1948 Super A, runs well, tires OK, new belts, sheet metal good, cultivator, draw bar, belly mower, rare foot throttle. Mack Shaw **Waycross** 912-283-7150

1981 Power King 2416, 16HP garden tractor: \$1500; 4 pieces of equipment. Needs starter rebuilt. Andy Lawrence **Alto** 706-968-2198

1984-1985 931C Caterpillar for sale. Needs new engine and left track coil. Engine model 3204PC. Arrangement 4N169: \$2200. Lisa Simmons **Conyers** 770-605-6107

2002 Kubota M4900 2WD ROPS good condition: \$12,500; plug aerator: \$1200; Rotary cutter: \$800; Post hole digger and augers: \$900; Box blade: \$500; Subsoiler: \$500. Rick Allison **Buford** 678-200-2040

2013 NH Boomer; 40 Compac, 4WD, loader, hook-ups, 143hrs, like new, 2014; BH15 Bushhog extra parts, new Bushhog blades, towbar, bolt kit: \$20,650. Sam **Marietta** 770-514-1431

2021 New Holland 75 Power-Star, 345hrs, 3rd function, 4WD, w/cab: \$58,500; 8ft Bushhog cutter: \$3700; also, Brangus black bulls for sale. James Brown **Ty Ty** 229-272-2653

240 Massey Ferguson original British-made, serial #529600. Very low hours, remote hyd. Harrow and bush hog: \$6500. Nick **Jackson** 404-557-5646

4040 John Deere, 6,000hrs, rebuilt injection pump, Moon-walk 6-ton fertilizer/lime spreader, new hydraulic lines, rod and bearings on back. Ready to work. William **Carnesville** 678-614-3569

986 International tractor. \$8000. Tommy Rider **Waynesboro** 706-814-4486

A restoration project: 1949 John Deere G, serial #33009. Needs a carburetor, front rims, motor not locked: \$2150. Larry Ansley **Watkinsville** 706-255-7174

Allis Chalmers tractors, 3-Bs, 1-CA, non-running, good sheet metal, assorted implements: \$1500. Wesley Carlan **Homer** 423-888-7272

Allis-Chalmers tractors. WD45, running w/new brakes; WD45, parts tractor; WD, not running, new tires, good sheet metal; CA w/bad engine; model 40 all-crop combine, new parts, manuals: \$4000 OBO. Mike **Bowman** 706-988-4524

Farmall C with cultivators. Runs good: \$1500; Farmall H, runs good: \$1300. Robert Collins Calhoun 706-602-9027

John Deere 1050, runs great, good condition overall. 2395 hours, front weights, 2WD, no ROPS. Can send pictures: \$5500. Chris Newman **Canton** 770-883-5952

John Deere Gator TS (2007), 1452hrs, gas, 11HP Kawasaki engine, 2WD, differential lock, new seats, new battery: \$5000. Clay Brown **Fort Valley** 478-391-7556

Kubota 2022 L2501DT. Gear drive, 4WD, R4 tires, with loader. Excellent condition, no emissions, 100 hrs.: \$21,000 firm. Jeff Walls **Dewy Rose** 678-371-2030

Older Model 140 Farmall tractor with single-disk plow and cutting harrow: \$3400 Starts and runs excellent. Clyde Parker **Chatsworth** 706-280-2932

CUTTERS AND MOWERS

2022 Hardee LR40142 16ft hydraulic boom mower: \$16,995. PTO-powered hydraulic unit. Setup for open center hydraulic system, but can be converted to closed. <3 hrs. Debra Middleton **Monticello** 678-478-0764

Bush-hog brand 2715 Legend Bat-wing mower, 15ft wide, flotation tires, no rust or dents. Always sheltered. Excellent condition: \$15,500. Rick Garrett **Bogart** 706-540-4090

Bushhog 217 model 7ft. rotary cutter. Like new: \$4000. Curtis Garner **Villa Rica** 770-757-6441

JD 7ft sickle mower, 3pt hitch: \$825; JD 606 6ft mower, sheltered, HD, excellent condition: \$950; King Cutter 6ft mower: \$875; tilted all-steel 8x16 trailer, dual axle: \$1850. Ron **Milan** 912-363-5978

John Deere 635 disc mower conditioner with impellers, 12ft cut, 1000 PTO. Cutter bar is bad: make offer. Call, leave message. Roger Bruce **Madison** 706-342-3638

Kuhn disc mower. 2019 GMD HD, used on approx. 250 acres, excellent condition, one owner, 8ft cut: \$9500. Frank Eaves **Elberton** 706-201-7267



BULLETIN

Livestock & Poultry

www.forms.agr.georgia.gov/GATE/

Exempt:

All feed used specifically for ag production or services of qualified livestock, fish, bee, and poultry operations. Feed and other items for qualified horse facilities.



Not Exempt:

Pet food and supplies for domestic animals including dogs, cattle/herding dogs, cats, birds, etc

Animal Husbandry

Not Exempt:

Animals that are not cattle, hogs, sheep, other livestock, poultry, or bees



Exempt:

Cattle, hogs, sheep, horses, poultry, goats, fish, and bees when sold for breeding purposes. Items designed for husbandry on animal ag operations.

Exempt:

Materials used for meat and dairy production, processing, and packing.



Meat and Dairy Production

Not Exempt:

Energy, cell phones or supplies used for residential or administrative purposes. Shipping or freight on items that are not qualified as tax exempt ag inputs.

CUTTERS AND MOWERS

Land Pride RCR2572 6ft cutter, good condition, sheltered: \$800. Call/text. Barry Collins **Milledgeville** 478-456-5236

PLANTING AND TILLAGE

16in disc harrow, 3pt hitch: \$500; 8in disc harrow, pull type: \$350. Curtis Reed **Lilburn** 770-403-5355

2-row cultivator with 3pt hitch: \$900; 2-row Covington planter with corn plates: \$900. Gary Melton **Cedartown** 678-988-9552

2022 Unverferth model 332 6-row ripper stripper: \$25,000; John Deere HX20 mower 20ft: \$8,000. Paul Harrell **Cairo** 229-377-4020

9ft Cultipacker, 3 point or tow, weight baskets, bought new, used only a few times. Carbon steel packing wheels, weighs about 100lbs per ft: \$2,500. Mike **Watkinsville** 706-621-1039

Case IH 335 vertical till, 31ft., disk 17.5inch: \$50,000. John Deere 726 mulch finisher, 24.9ft: \$16,000; Krause 4118 field cultivator, 21ft: \$3,750. Paul Harrell **Cairo** 229-377-4020

Ferguson 2 bottom plow 3-pt hitch: \$250; 5ft Bushhog brand HD 3ph: \$750. George **Commerce** 706-658-6081

Ford 2-bottom turning plow; (1) 2-disc turning plow HD w/ tailwheel; (1) 20-disc HD culling harrow; (1) 5.5x10 utility trailer; (1) new quick pickup forklift; (1) tractor. Darwin **Trion** 706-238-0465

King 8-disk cutaway harrow, 3pt hitch, field ready: \$450; Taylorway 16-disk offset harrow on wheels with cylinder, HD: \$2250. Charles **Commerce** 706-658-6081

Taylor 3pt hitch rototiller, Model 962: \$2250. Call or text. Don Sullinger **Royston** 706-680-5281

GRADERS AND BLADES

7-foot deep box land plane (box blade): \$1800; Heavy duty bush hog harrow for new ground/fire break: \$1200; 3-point hitch post hole digger with auger: \$495. Emily Kenney **Vidalia** 912-293-2890

Dirt Dog 3505 scraper blade, 6ft 3pt. hitch. Bought new but never used: \$650. Call or text. Joseph Gibson **Johns Creek** 770-789-4036

Ford industrial 5ft scrape blade 3-pt excellent condition: \$400. 5ft box blade 3pt never used, new condition: \$400. Chester **Jefferson** 706-658-6081

PICKERS AND HARVESTERS

1972 combine: \$2500; also 1960 combine: \$1500. Both barn kept and running condition. Ready to go. Andy Adams **Hartwell** 706-376-8968

JD 9965 cotton pickers: \$12,500; Hobbs hard hose 1250ft: \$15,000; Harrell 6-bottom plow like new: \$16,000; C-65 grain truck: \$6500; KML peanut combine, wide-body, 6-row: \$10,000. Owen Stapleton **Richland** 229-938-7348

John Deere 630 harrow, 32ft: \$6000; Crustbuster Boll Buggy, 16ft, Vane Packer, 4 tires: \$500; John Deere 10-bolt dual wheel hubs: \$600/pair. Paul Harrell **Cairo** 229-377-4020

Self propelled blueberry harvester, BEI sway machine, excellent condition: \$30,000. Call for more details, no texts. L.G. Mitcham **Ludowici** 912-270-4683

HAY AND FORAGE

2007 Vermeer 5410 Rebel net wrap baler with AccuBale Monitor, 4x5 sized bales, 11,000 bales through it, extra belt, pickup teeth: \$10,000. Leave message. Steve Echols **Signall** 706-401-0350

2021 John Deere 460M round baler, silage special, lightly used, high flotation tires, push-bar, surface wrap with twine. Excellent condition: \$38,000 OBO. S. Stana **Carrollton** 770-241-3201

575 New Holland baler. Hydraulic bale tension, hydraulic tongue. Field ready, kept under shelter: \$12,000. No text please. Jimmy Hendrix **Metter** 912-678-5179

Bermuda King model 73-20 sprig harvester: \$3500; Bermuda King sprig planter, model 8-86: \$3500 or both for \$6000 including sprig trailer. Both field ready. Phil Moshell **Morris** 229-881-5823.

JD 450E round baler, 4x5, baled 850 bales, net-wrap and string: \$28,000. David Petit **White Plains** 706-614-3913

JD combine 4420 also 215 header; JD 467 net wrap baler; Massey Ferguson 1080. Make an offer. Carl McKnight **Senoia** 770-328-6810

John Deere 348 square baler in great shape, field-ready, under cover: \$14,000 OBO; 500-gal pull-behind Rainbow sprayer; \$4500 OBO. Alex **Dahlonega** 678-410-0983

John Deere 457 string baler like new. It has been stored in a barn. Looks and runs great. Used it last hay season without problems: \$10,500. Jason Hammett **Senoia** 678-410-8194

M & W model RC466 Hay rake, 8 wheels great condition. Everything works as it should: \$3,000 or best offer. Michael Brown **Hawkinsville** 478-957-0651

Roto cutter round bale cutter, 3pt hitch, PTO driven w/cylinders. Cuts bale in half or quarter: \$1000. Bob Brady **Augusta** 706-373-8397

SPRAYERS AND SPREADERS

Frontier MS 1108 manure spreader, 2018 mode, PTO powered, 80bu capacity, excellent condition, great for small farm: \$3500/OBO. Jess Austin **Dillard** 678-296-5965



Poultry Housekeeper. Large bed. Retiring: \$4500. Greg Carey **Homer** 404-314-9866

AG PARTS AND TIRES

(2) fuel tanks, approx. 100Gal w/pumps. One works: \$100; one doesn't: \$75. Larry Rogers **Camilla** 229-328-1758

OTHER MACHINERY AND IMPLEMENTS

Danhuser F7 post hole auger with 9inch bit: \$600; 3pt hay spear, All American, brand new: \$225. Ryan Baerne **Nicholson** 706-247-6240

7ft frontier bucket for JD 540M loader for sale. Brand new: \$2000/OBO. Will trade for hay spear, pallet forks or buy hay spear and pallet fork. Mike Bloodworth **Knoxville** 478-836-2535

Lots of Corley circular sawmill parts Drayline bucket, Bay City, Fairlead, Bay City wheels, tires. All kinds of undercarrage parts; 4-boom sections, 5/8 steel cable. Richard Thompson **Rossville** 423-991-7530

Miller-Yoder 1 horse surrey buggy: \$900; (7) 160 bushel gravity flow wagons: \$1900-\$2500; 6000-gallon steel fertilizer tank: \$1200; Super B dryer, M# AS-400, 1715hrs: \$400. Paul Harrell **Cairo** 229-377-4020

New Holland 352 mixer grinder: \$600; Gehl silage wagon parts. R. Jolley **Covington** 404-414-2694

Post hole auger with 9inch bit: \$2500; 48inch pallet forks: \$750; 78inch root grapple: \$1500; All new universal quick connect. Jim Bishop **Franklin** 706-675-3943

Vermeer RTX150 walk-behind stand on trencher, new engine, rebuild tracks, ready to be put to work: \$6250. Andy Adams **Hartwell** 706-376-8968

Wood splitter for sale. Runs off tractor PTO: \$200. Ken Hughes **Oxford** 770-596-2381

HEAVY EQUIPMENT

Please specify if equipment is in running condition or not.

FORESTRY AND LOGGING EQUIPMENT

Band sawmill for sale. Cuts 16ft in length. Call for further details and can send pictures: \$4000. David Chambliss **Dawson** 229-894-1561

Like new Titan 72in HD log grappler for JD Series 4 tractors. Hook and pin connection. Twin 3,000lb cylinders, hoses and couplers. Replaceable cast bucket teeth: \$1500. William Grun **Hawkinsville** 478-335-5830

CONSTRUCTION EQUIPMENT

D5M Caterpillar 1997 high-track dozer, new sprockets, new rails, new pads and all new knuckles, 6-way blade, 350hrs. Photos available: \$52,500. James M. Morris **LaFayette** 423-304-8022

John Deere 455G crawler loader 1997 with 5288 hours. 4-in-1 bucket, 70% undercarrage, full set maintenance manuals: \$17,500. Bill or Jennifer **Toccoa** 404-372-2771 or 706-244-2841

TRAILERS

LIVESTOCK HANDLING AND HAULING

04 fifth wheel camper. Very good condition. 1 slide out, fridge, stove, heat, air, etc.: \$6500 OBO. Will consider trade for UTV in good shape. Debbie Tucker **Blythe** 706-829-6116

2-horse steel stock trailer 2003, red, very good condition, always kept inside, 12x6 bumper pull, mats and good floor: \$4000. Diane Bond **Blue Ridge** 706-258-7856

Featherlite aluminum 4-horse gooseneck trailer. Rear tack, large dressing room. Used very little, like new, hauled horses less than a dozen times: \$16,500. Kent **Jordan Hartsfield** 229-891-8912

EQUIPMENT TRAILERS AND CARTS

16x6.5 bumper pull two new 3500lbs axles with brakes, new tires and wheels, oak floor. Heavy duty and in excellent condition: \$2800. Kim Bryant **Monticello** 706-476-0083

18ft long, 7ft wide Hooper flatbed dual axle, 7,000 GVWR. Equipment trailer new tires excellent condition: \$3200. Caleb Anthony **Jefferson** 706-658-6081

2017 Carry-on aluminum trailer, 6ftX12ft, 50in gate, 15in wheels/tires, spare w/frame mount, jack w/wheel, LED lights, PT floor, VGC, asking: \$2650. Mitch Wages **Loganville** 770-601-3451

40ft gooseneck trailer, dual tandem, 6ft floored neck, good tires, ramps; 24ft gooseneck ramps dovetail, ramps, 3-axle 40ft: \$11,900, 24ft: \$3000; 10inch wheel lift type hayrake: \$1000. Clark Holton **Douglas** 912-592-8584

7x16 double axle car/utility trailer with ramps: \$2800. Chance Kelley **Haddock** 478-319-7678

CROP TRAILERS, AND CARTS

1995 Strickland chip trailer. 40ft, barn doors, enclosed top, wood floors. Excellent condition, good brakes, descent tires, all lights work: \$5000. Call or text. Howard Grant York **Bowersville** 706-436-6394 pamyork@hartcom.net

1996 40ft log trailer. Good condition. Good brakes. All lights work: \$2000. Call or text. Howard Grant York **Bowersville** 706-436-6394 email: pamyork@hartcom.net

Looking for your subscriber number and expiration date? Find both above your name on your mailing label:

Subscriber Number Expiration Date

#00000000# 1/01/2021

MARKET BULLETIN SUBSCRIBER
19 MARTIN LUTHER KING JR DR SW
ROOM 330
ATLANTA GA 30334-0000

Subscribe to the Market Bulletin

An annual subscription is \$10 (26 issues) and includes online access to view the *Market Bulletin*, place Classified ads and search the Classifieds online.

New Subscriber Gift subscription
 Renewal (Subscriber No. _____)

Please deliver the *Market Bulletin* to:

Name: _____

Address: _____

City: _____ State: _____ Zip code: _____

Phone: _____

Email address: _____

Check here if you prefer an online subscription (the paper WILL NOT be mailed to you).

Please bill this subscription to:

(Check here if same as delivery address)

Name: _____

Address: _____

City: _____ State: _____ Zip code: _____

Phone: _____

Email address: _____

Please make your check or money order payable to the Georgia Department of Agriculture and mail with this form to:

Georgia Department of Agriculture
Att: Market Bulletin
P.O. Box 742510
Atlanta, GA 30374-2510

You may also pay with a Visa or MasterCard online at <http://www.agr.georgia.gov/market-bulletin> or by contacting our Consumer Call Center at 800.282.5852.

Market Bulletin Classified Ad Form

All ads are scheduled to run in two consecutive issues, unless requested otherwise. Subscribers may run one free Classified per issue. Multiple ads per issue may be purchased for \$10 per ad (price covers two issues). Ads are limited to 30 words, including your name, city and phone number.

Category (e.g., Farm Machinery; Farm Animals): _____

Classification (e.g., Tractors; Cattle): _____

Phone number: _____

Subscriber number: _____

Border (\$5) Photo (\$20)

Additional Ad (\$10)

Only applies when multiple ads run in the same issue.

Please mail a check or money order for the exact dollar amount of your choice with your ad. Enclose photo with ad and payment, or email (.jpg) to MBClassifieds@agr.georgia.gov.

Mail this form to: Georgia Department of Agriculture, Attention: Market Bulletin, 19 Martin Luther King Jr. Dr. SW, Room 330, Atlanta, GA 30334
FAX to: 404.463.4389

Farmers and Consumers Market Bulletin Classified Categories

You must be a subscriber to advertise in the *Market Bulletin* Classifieds. All advertisements submitted to the *Market Bulletin* must be agriculture-related. Please note that some categories require supporting documentation before ads can be published. For questions about these categories, please call **404.656.3722** or email **MBClassifieds@agr.georgia.gov**.

Farm Machinery

- Tractors
- Cutters and Mowers
- Planting and Tillage
- Graders and Blades
- Pickers and Harvesters
- Hay and Forage
- Sprayers and Spreaders
- Ag Parts and Tires
- Other Machinery and Implements

Heavy Equipment

- Forestry and Logging Equipment
- Construction Equipment

Trailers

- Livestock Handling and Hauling
- Equipment Trailers and Carts
- Crop Trailers, Carts and Bins

Vehicles

- Trucks
- Truck Accessories and Parts
- UTVs/ATVs
- Golf Cars
- Boats

Lawn and Garden

- Garden Tractors
- Landscape Tools/Materials

Farm Supplies

- Irrigation Equipment
- Tools and Hardware

- Generators and Compressors
- Buildings and Materials
- Lumber
- Posts and Fencing

Farm Animals

- Cattle
- Swine
- Goats
- Sheep
- Equine
- Stock Dogs
- Barn Cats
- Rabbits
- Poultry/Fowl
- Poultry/Fowl Requiring Permit or License
- Non-Traditional Livestock

Animal Supplies

- Cattle Supplies
- Swine Supplies
- Goat Supplies

- Sheep Supplies
- Tack and Supplies
- Dog Supplies
- Rabbit Supplies
- Poultry Supplies

Miscellaneous

- Bees, Honey and Supplies
- Aquaculture and Supplies
- Feed, Hay and Grain
- Mulch and Fertilizers
- Poultry Litter/Compost
- Plants, Trees and Flowers
- Hemp
- Herbs
- Seeds
- Timber
- Firewood
- Farmers Markets
- Pick Your Own
- Things to Eat
- Oddities
- Handicrafts and Supplies

- Farm Antiques
- Canning Supplies
- Other
- Christmas Trees

Real Estate

- Farmland for Sale
- Farmland Rent/Lease
- Garden Space Rent/Lease

Services

- Stud Services
- Boarding Facilities
- Farm Services

Employment

- Farm Help Needed
- Seeking Farm Employment

Wanted

- Items wanted in all categories will be advertised here.

VEHICLES

Please specify if vehicles are in running condition.

TRUCKS



1987 Ford F700. Lonely F700 seeks farm employment. 429 motor, new carburetor, 11ft flatbed, 2inch hitch. Needs new fuel pump to run included. First: \$2700 OBO. James Bartlett **Whitesburg** 404-625-9144

1989 2WD Toyota, half-ton, long bed, damaged in front, 22R-E engine, 99,749mi, auto, good parts (bed, fenders, doors, hood.): \$1500. Can send pictures. G.W. **Maysville** 706-499-5391

1992 F-700 Ford dump truck: \$7500 OBO; 1993 Ford F-450 Heavy Duty, propane-operated, new tires: \$2800 OBO. Kenneth Taylor **Cleveland** 706-224-6169

1993 Ford F700. Flatbed and dump bed. 7.5L gas engine. New tires, new brakes, runs great. 198,000miles. Engine rebuilt 20k miles ago: \$10,750. Text or call. Ben Huffman **Jeffersonville** 225-772-3478

1996 F-350XLT, 4WD, 189,000 miles, 9ft. flatbed with gooseneck hitch, 7.3 power stroke, runs well and good condition: \$16,500. Can send photos. Gary **Cumming** 678-270-8958

1997 Toyota Tacoma 4x4, 2.7L engine, five-speed, 349,000 miles with a fiberglass camper shell. Farm Truck or good parts: \$1500. G. W. **Maysville** 706-499-5391

2000 Ford Excursion, 4WD, gas, runs and drives good, looks good, many new parts. Call for more information: \$7500. I no longer need it. Rembert Cragg **Alto** 706-499-8063 or 706-499-2999

2003 Ford F-250 SRW Super Duty Black Diesel with 113,000 miles: Asking \$13,000. Please text Kim. **Conyers** 404-309-0360

2003 GMC W-3500 w/landscape body, 92k miles, nearly new tires. AC, power steering and brakes, extra clean. David **Cedartown** 770-748-8929

2011 Chevrolet Silverado, 155k miles, 4dr, crew cab, auto, 4WD. Call for pricing. R. Spratlin **Woodland, AL** 256-610-7064

2012 Dodge 3500 crew cab/chassis, 4WD, 5.7engine, automatic transmission, 113,400miles, Anderson toolbox body, air compressor, fuel tank, electric pump, vise; 2010 Hooper gooseneck trailer 28ft: All for \$30,000. Paul Harrell **Cairo** 229-377-4020

2015 GMC Sierra 1500 crew, 203K miles. Needs rebuilt engine, good condition, good radial tires: \$14,000. Robert Pennington **Madison** 706-474-0710

88 Silverado Chevy, had not run in a while; long-wheel base. Martin Ashley **Danville** 478-697-9953

UTVs/ATVs

2016 Bad Boy Onslaught 503cc 4 wheeler w/5x10 trailer for 4 wheeler: \$5,500/both OBO or \$4,500/4 wheeler & \$1,500/trailer. Both like new. 4 wheeler can pull trailer. Rozier **Warner Robins** 478-396-0726

2024 Atlas off-road 500cc 700cc UTV with tilting cargo bed and windshield, 29.69 HP (winch). Purchased new 2/2024, Driven 4 times: \$6500 Deb Carter **Monticello** 404-376-9523

GOLF CARS

2014 Club Car golf cart, gas powered, new tires, excellent condition, with cover: \$5400. Steve Marshall **Lizella** 478-935-8325

LAWN AND GARDEN

Please specify if machinery is in running condition or not.

GARDEN TRACTORS

Woods 42 belly mower. Fits IH decent deck, complete: \$200 OBO. Kevin Meeks **Milledgeville** 478-443-0046

LANDSCAPE TOOLS AND MATERIALS

Dewalt 20V hedge trimmer, new, w/battery and charger: \$125. Marvin **Marietta** 770-427-6848

Fresh pine straw installed. 20+ years experience: \$4.75-\$5.75/bale, no additional fees, (50) bale minimum. American owned/operated. Serves north metro Atlanta and surrounding areas. Gloria Williamson **Atlanta** ysrvc@hotmail.com 770-912-6671

Kemp shredder/mulcher, 5HP engine. Model K161T, runs well. Missing chipper chute but still usable. Great for leaves, twigs, small branches: \$300 OBO. Mike Rochelle **Resaca** 706-934-5836 rochellemike@hotmail.com

Long Leaf pine straw. Available roll bales and square bales. Delivery and install available. Call for pricing. Joshua **Manchester** 404-925-1076

FARM SUPPLIES

TOOLS AND HARDWARE

Sears Craftsman bench saw, 10-inch tilting arbor with table extension and manuals. Excellent condition: \$150. Alvie Killingsworth **Norcross** 770-448-2564

BUILDINGS AND MATERIALS

Heatstar propane heater, almost new, used only few times. Paid \$375, asking: \$250. Bobby Cagle **Milton** 770-337-5586

Plastic pallets - black, large heavy duty, over-sized, 43.5in (W) x 55in (L) x 6in (H). Good condition, durable: \$19/ea. Alexander **Brooks** 678-723-9265

Modular classroom trailer, 14ft wide X 43ft long. Use for office, storage, dwelling. Complete AC & heat, new carpet, no roof leaks: \$11,400. Call. William Solomon **Brooks** 678-723-9265

Riteway wood burning stove. Not pretty, but functional. Leave message. Michael Sutherland **Suwanee** 404-273-1081

Rusted 5V roof metal from old shed in Lee County. You take all. Henry Crisp **Americus** 229-938-8061

US Stove Co, new, plus pipe: \$300; two intact male goats, approx. 150Lbs: \$200/ea. Edward Patten **Sylvester** 229-881-1674

Used tin for sale, good condition. 30 pcs, 24inX8ft & 30 pcs, 24inX9ft: \$1/ft. Negotiable if buyer takes all. Milton Anthony **Columbus** 706-681-5182

LUMBER

Band-sawn lumber. Pine or hardwood, siding or framing and beams, oak trailer decking or blocking, T&G shiplap. Text or call. Larry Moore **Grantville** 678-278-5709

Custom cut band saw lumber cut to order with a Wood-Mizer LT15. Call or text for more information. Johnny Simmons **Monroe** 678-201-5473

Good used lumber; 2x4; 2x6; 2x8 in various lengths. Plywood and chipboard 4x8 sheets. Better than half-price materials. Steel I-beams 4inchx12inchesx22ft and steel posts 4inchx6inchx12ft. Royce Brooks **Acworth** 770-378-2564

Mixed seasoned split & green hardwood firewood available: price based on quantity. AA Farms **Hartwell** 706-376-8968

Red Oak. Rough cut, 8ft, 10ft and 16ft lengths; 1inch and 2inch thick. Kept under cover. Have approximately 1848 board feet: All for \$500. Kathy Meremonte **Hampton** 470-301-8641

Sawmill lumber. Rough, finished, kiln-dried, air-dried or green. Pine, red/white oak, poplar, cherry, black walnut, slabs available for counter tops. Can cut up to 24ft. Andy Adams **Hartwell** 706-376-8968

We sell all species of hardwood kiln dried, planned, and straight lined ripped. Also sell cabinet grade plywoods and pattern lumber. Custom milling, firewood also available. Justin Boutwell **Thomson** 706-699-2067

Wood-Mizer custom-cut lumber, milled, air-dried, restorations, timber frames, flooring, barns, fencing, tables, mantles, live-edge, reclaimed lumber, and trailer flooring. John Sell **Milner** 770-480-2326 sellj@bellsouth.net www.sell-andassociatesinc.com

POSTS AND FENCING

16 fence posts cut lengths are 7-8 ft long, and 6-10 inches diameter: \$200. Ronald Folk **Jeff Davis County** 912-209-0526

Good used gray cedar wooden fence slats, 1x6 with varying lengths, estimated 90-100sqft. Boards are even cut, solid and no nails: \$275. Call for details. Henry East **Cobb County** 770-971-7857

FARM ANIMALS

Livestock listed must be for specific animals. Ads for free or unwanted livestock will not be published. All animals offered for sale in the *Market Bulletin* must be healthy and apparently free of any contagious, infectious or communicable disease. Out-of-state animals offered for sale in the *Market Bulletin* must meet all Interstate Animal Health Movement Requirements, including appropriate testing for the species and a current official Certificate of Veterinary Inspection or NPIP 9-3 for poultry. Individuals may sell their own animals; however, livestock dealers are required to have a Livestock Dealer License from GDA. For more information, please call the GDA Livestock and Poultry Division at 404.656.3665.

CATTLE

(20) coming 2 yr Braford bulls; (20) coming 2 yr Hereford bulls; (70) open Hereford heifers. Jonny Harris **Odum** 912-586-6585

1 miniature High Park/Scottish Highland bull for sale. Parents are registered. Black nose. Body is light to dark copper color. Text for more information. Penny Crumbley **McDonough** 678-614-1942

14-15 month old registered black Angus yearling bulls. Al sired by Growth Fund, Commerce, Exponential, Iron Horse & Rival. BSE/DNA completed. Dry Branch Angus. Brett Fausett **Dawsonville** 706-265-9661

16 month old registered Angus bulls for sale. Ready for service. Bred for calving ease. Call or text. Cloud Cattle, Sam Cloud **Canton** 678-294-4475

Help The Honey Bee



License plates available now

gabeepate.com

CATTLE

2 Angus heifers: \$800/ea; 1 red Angus heifer: \$800/ea; 1 Angus bull: \$1000. All 5mos old. C. D. Gravitt **Buford** 770-945-4371

2 year old Jersey bull. Farm raised, gentle. Don Hudgins **Villa Rica** 404-886-6849

2 year+ black Angus bulls ready for service: \$2850 each. Please leave a message. Rodney Brooks **Glenwood** 912-523-5282

20 months old registered Charolais bulls. They have passed the BSE exam, fully vaccinated: \$3500. Carl Roper **Canon** 706-491-9604

3 purebred Wye Angus pairs, 5-6 years old. John Woods **Pine Mountain** 706-302-4709

6 registered 18-month-old Angus bulls. Will deliver. Solid Ground Farms. Kirk Little **Lyons** 912-326-3512



Bull/bulls annual sale on farm. Purebred, virgin, low birth weight, 1-2 yrs old with registered ancestry. Ready to breed. Come see us. Daniel Divide, Daniel Thomaston 478-297-8627

Hereford and red Baldie heifers. Spring calving, bred to red Angus easy calving bull: \$3000. John Green **Rising Fawn** 423-280-6555

Jersey cow 7 with bull calf. Gentle, lots of milk. Don Hudgins **Villa Rica** 404-886-6849

Purebred Hereford bulls for sale: \$2500 up. Jim Drake **Starr, SC** 864-933-2790

Reg'd black Angus bulls, 18-28m/o, BSE/DNA tested, top EPDs. AI sired by Veracious, Top Cut, Foretold. McMichael Angus Farm, Ken **Monticello** 706-819-9295

Reg'd Charolais heifers, 9-14m/o, easy disposition, current shots, you pick: \$2000/ea or \$15,000 take all. Text or call. Shala Phillips **Hartwell** 706-498-4215

Reg'd polled Hereford bulls – rugged, pasture raised, gentle exc bloodlines & EPDs, small calves, exc growth, western genetics, Ga bred. Bobby Brantley **Tennille** 478-553-8598

Reg'd polled Hereford bull, grandson of THM Avatar, must see to appreciate, can text photos; also (14) straws Dream On semen. Ennis Ryals **Dublin** 478-278-0678

Reg'd pure Wye Angus bull 16 months old. Also, 5 Wye Angus embryos all by Churchill of Wye and Queen Mother of Wye. F. Brinson **Millen** 478-982-5473

Reg. Angus bulls, semen tested with low birth wts and excellent EPDs. Photos on request. Delivery available. Windell Gillis **Eastman** 478-231-8236

Bulletin Calendar

Feb. 4
Starting Seeds like a Champ UGA Extension Gwinnett County ONLINE WEBINAR Register at https://bit.ly/482QqoW 678.377.4026 lisa.klein@gwinnettcounty.com

Feb. 6
Bed Bug Workshop UGA Entomology and Structural Pests UGA Griffin Campus Student Learning Center 1109 Experiment St Griffin, Ga. dsuiter@uga.edu 770.233.6114 https://bit.ly/40JAogs

Lunch and Learn: Right Plant for the Right Place UGA Extension Henry County 97 Lake Dow Rd McDonough, Ga. 30252 841.288.8421 tdaly@uga.edu

Feb. 7-9
Athens Wine Festival Benefiting the Classic Center Cultural Foundation The Classic Center 300 N. Thomas St Athens, Ga. 30601 https://bit.ly/3D8Hfqt

Feb. 9-11
Georgia Wine Producers Annual Conference The Classic Center 300 North Thomas St Athens, Ga. 30601 706.897.1758 info@georgiawineproducers.org www.georgiawineproducers.org

Feb. 11
Cotton Boll Quilt Guild Quilt Show: Cherie Tatro and Mary Volzer Epiphany Lutheran Church 2375 Ga. Highway 20, S.E. Conyers, Ga. 30013 Facebook: cottonbollquiltguildinc skel621@aol.com

UGA Horse Owner's Webinar Series: Senior Horse Management Register at https://bit.ly/4gtDWbH 706.359.3233 rlstew2@uga.edu

Prepping Your Tools for Spring Georgia Native Plant Society West Georgia Chapter Carroll County Agricultural Center 900 Newnan Rd Carrollton, Ga. 30117 info_westgeorgia@gnps.org https://bit.ly/41WgvUl

Feb. 13
Soil Basics and Interpreting Georgia soil tests UGA Extension Gwinnett County ONLINE WEBINAR Register at https://bit.ly/3AHU2n 678.377.4026 lisa.klein@gwinnettcounty.com

Feb. 13-15
Journeyman Farmers Certificate Program Small Fruit & Vegetable Production UGA Extension Henry County 97 Lake Dow Rd McDonough, Ga. 30252 841.288.8421 tdaly@uga.edu https://bit.ly/3CuGtUr

Feb. 15-16
GNPS Annual Symposium Breaking the Grass Ceiling: Promoting Native Landscapes Georgia Native Plant Society VIRTUAL EVENT Registration TBA https://bit.ly/40eXQ4X

Feb. 17, 19 & 21
Beekeeper Short Course: Nucs, packages & swarms Three-part workshop for beginners UGA Extension Clayton County 1262 Government Circle Jonesboro, Ga. 30236 Register at bit.ly/REGISTERINCLAYTON 770.473.3945 https://bit.ly/3Tz4dwU

Feb. 18
Heart of Georgia Beekeepers Meeting Argene Claxton Canning Plant 1701 Houston Lake Rd Perry, Ga. 31069 www.hogba.org

Feb. 18 & 25
UGA Horse Owner's Webinar Series: Senior Horse Management Register at https://bit.ly/4gtDWbH 706.359.3233 rlstew2@uga.edu

Feb. 19
Egg candling class Georgia Department of Agriculture McIntosh County Fort King George 302 McIntosh Rd, S.E. Darien, Ga. 31305 404.656.3627 glenda.adams@agr.georgia.gov agr.georgia.gov/events

Egg candling class Georgia Department of Agriculture Floyd County Berry College Lamar Westcott Building Viking Way (Next to baseball field) Mount Berry, Ga. 30149 470.501.0659 tina.maples@agr.georgia.gov agr.georgia.gov/events

Feb. 19-22
Georgia Junior National Livestock Show Georgia National Fairgrounds 401 Larry Walker Parkway Perry, Ga. 31069 kwise@gaaged.org georgiaffa.org/GJNLS

Feb. 20
Commercial IPM Workshop UGA Entomology and Structural Pests UGA Griffin Campus Student Learning Center 1109 Experiment St Griffin, Ga. dsuiter@uga.edu 770.233.6114 https://bit.ly/40JAogs

Feb. 20-22
Georgia National Rodeo and Stock Show Georgia National Fairgrounds 401 Larry Walker Parkway Perry, Ga. 31069 1.800.987.3247 www.georgianationalrodeo.com

Feb. 25
Georgia 4-H Day at the Capitol Capitol Building 206 Washington St, N.W. Atlanta, Ga. 30303 706.542.4444 bjand626@uga.edu

Feb. 27
Spring Vegetable Gardening UGA Extension Gwinnett County ONLINE WEBINAR Register at https://bit.ly/4fzrib2 678.377.4026 lisa.klein@gwinnettcounty.com

Feb. 28
Food Supply Chain Workshops: Marketing Team Georgia Agriculture UGA Food and Product Innovation Center 405 Cowart St Griffin, Ga. 30223 404.695.0141 https://bit.ly/4fXTtQH

Feb. 28-March 2
Boer Goat Show Peach State Classic Georgia National Fairgrounds 401 Larry Walker Parkway Perry, Ga. 31069 1.800.987.3247 https://bit.ly/3PLjrMx

March 1
Whigham Rattlesnake Roundup Whigham Community Club East Broad St. Whigham, GA 39897 https://bit.ly/3BzKzKc

March 1-2
2025 Winters End Llama Show Georgia National Fairgrounds 401 Larry Walker Parkway Perry, Ga. 31069 1.800.987.3247 https://bit.ly/40khDA2

March 4
Starting a Community Garden UGA Extension Gwinnett County ONLINE WEBINAR Register at https://bit.ly/3DEWvvy 678.377.4026 lisa.klein@gwinnettcounty.com

March 5
Egg candling class Georgia Department of Agriculture Fannin County Fannin County Agricultural Facility 43 Station Ridge Blue Ridge, Ga. 30513 470.501.0605 tina.maples@agr.georgia.gov agr.georgia.gov/events

March 6
Commerce Beekeepers Club DDT by Shawn Jones Commerce Public Library 1344 S. Broad St Commerce, Ga. 30529 Web: commercebeeclub.com Facebook: commercebeekeepersclub

March 6-7
Termite Control Workshop 1 UGA Entomology and Structural Pests UGA Griffin Campus Student Learning Center 1109 Experiment St Griffin, Ga. dsuiter@uga.edu 770.233.6114 https://bit.ly/40JAogs

March 7
UGA Extension Southeastern Green Industry Update Online via Zoom https://tinyurl.com/4fe2zc8m 770.288.8421 tdaly@uga.edu

March 9-10
Winter Chautauqua travel and tourism conference Northwest Georgia Travel Association The Boathouse Lake Lanier Olympic Park 3105 Clarks Bridge Rd Gainesville, Ga. 30506 info@georgiamountains.org www.winterchautauqua.com

March 12-14
63rd Annual Convention Georgia Cattlemen's Association Augusta Marriott Convention Center 2 Tenth St Augusta, Ga. 30901 478.474.6560 gca@gabeef.org www.georgiacattlemen.org

March 15
Blue & Gold Gala Georgia FFA Mercedes Benz Stadium 1 AMB Dr., N.W. Atlanta, Ga. 30313 912.614.6808 psweet@gaaged.org https://bit.ly/4gFACuw

March 17-23
National Ag Week Georgia Department of Agriculture Various locations http://georgiaagweek.com/ https://www.agday.org/

March 20
Home Grown Tomatoes in Georgia UGA Extension Clayton County 1262 Government Circle Jonesboro, Ga. 30236 Register at bit.ly/REGISTERINCLAYTON 770.473.3945 https://bit.ly/3Tz4dwU

March 21
UGA-CAES Alumni Association Awards and Georgia Agricultural Hall of Fame Ceremony The Classic Center 300 N. Thomas St Athens, Ga. 30601 706.542.5264 lbayne@uga.edu https://bit.ly/3ZMFWGE

March 25-27
Georgia Pecan Growers Association Annual Conference and Trade Show Georgia National Fairgrounds 401 Larry Walker Parkway Perry, Ga. 31069 229.382.2187 mary@georgiapecan.org https://georgiapecan.org/

April 2
Egg candling class Georgia Department of Agriculture Dodge County Board of Commissioners 643 Pearl Bates Ave Eastman, Ga. 31023 404.656.3627 glenda.adams@agr.georgia.gov agr.georgia.gov/events

Have an event to put on our calendar? Contact Jay Jones at 404.656.3722 or jay.jones@agr.georgia.gov

We accept calendar submissions for food, craft and agriculture festivals and events. Submissions for festivals that do not specifically promote those industries will not be printed.

Additional pesticide recertification training notices are available on the department website under the Plant Industry Division tab.

PUBLIC NOTICE BY GEORGIA PORK PRODUCERS ASSOCIATION AND THE NATIONAL PORK BOARD

The election of pork producer delegate candidates for the 2026 National Pork Producers (Pork Act) Delegate Body will take place at 1:30 p.m., Tuesday, February 18, 2025, in conjunction with a Board of Directors meeting of Georgia Pork Producers Association at the State Farmers Market in Macon, Georgia. All Georgia pork producers are invited to attend.

Any producer, age 18 or older, who is a resident of the state and has paid all assessments due may be considered as a delegate candidate and/or participate in the election. All eligible producers are encouraged to bring with them a sales receipt proving that hogs were sold in their name and the checkoff deducted. For more information, contact Georgia Pork Producers Association, P.O. Box 1566, Bainbridge, Ga., telephone 1-229-254-9355.



Registered black Angus bulls for sale. 18-24 months old. Top Genetics. Available for viewing at our farm, JLB Farm and Kennel. Eric Brasington **Armuchee** 404-569-3080

Registered red Angus bulls for sale. BSE, semen tested, and ready for service. Morgan Marlowe **Pine Mountain** 706-315-8260

Registered Charolais bull, 17 months old. Lots of growth and length. Very gentle. Around 1450lbs: \$4000. Pictures, videos available. 15 minutes from Perry. Call/text. Joseph Owen **Marshallville** 731-694-7996

Registered yearling Polled Hereford bull for sale. Dark red and stout, born 3/1/24. Tim Parks **Ellijay** 706-635-2531

Registered Charolais bulls. Excellent EPDs. Easy calving. All vaccinations. Current breeding soundness exams. Fully guaranteed. Ready for breeding. Call/text. Craig Padgett **Baxley** 912-367-4929 or 912-347-4345. Leave message if no answer.

Livestock Sales and Events Calendar

APPLING COUNTY

1st & 3rd Saturdays, 12:30 p.m. at the Baxley Fairgrounds Goats, sheep, feeder pigs, hogs, calves, poultry and rabbits; A&A Goat Sales, 187 Industrial Drive, Baxley. **Call** Allen Ahl, 912.590.2096

ATKINSON COUNTY

2nd & 4th Saturdays, 12:30 p.m. Goats, Sheep, Chickens, other livestock; Pearson Livestock, 1168 Hwy 441 N, Pearson. **Call** Jorge Caycay 912-253-1247

BEN HILL COUNTY

Every Monday, 1 p.m.: Cattle; South Central Livestock, 146 Broad Road, Fitzgerald. **Call** Thomas Stripling, 229.423.4400 or 229.423.4436

BLECKLEY COUNTY

2nd & 4th Saturday, 1 p.m.: Goats, sheep, calves, rabbits, poultry. Every Saturday miscellaneous at 10 a.m. Col. Wayne's Auction Co., Bleckley County Barn, 293 Ash St., Cochran. **Call** Wayne Chambley, 678.544.3105. Lic# AU004496

BUTTS COUNTY

Every Wednesday, 12:30 p.m.: Beef cattle; **2nd & 4th Wednesdays, 11:30 a.m.:** Dairy cattle; Jackson Regional Stockyard, 467 Fairfield Church Road/Hwy. 16 W, Jackson. **Call** Barry Robinson, 770.775.7314

CAROLL COUNTY

Every Monday, noon: Cattle, goats, sheep; Carroll County Livestock Sales Barn, 225 Salebarn Road, Carrollton. **Call** Eric Thompson, 678.372.3776

CLARKE COUNTY

Every Wednesday, 11 a.m.: Goats and sheep; **noon:** cattle. Northeast Georgia Livestock, 1200 Winterville Road, Athens. **Call** Todd Stephens, 706.549.4790

Thursday, Feb. 13, 12 p.m.:

University of Georgia 32nd Edition Focus on Genomic Enhanced EPDs Bull Sale. Selling 35 Angus bulls, 3 registered Angus open heifers, and 30 Angus-cross commercial open heifers. UGA Livestock Instructional Arena, 2600 S. Milledge Ave, Athens. **Call** Carroll T. Cannon, 229.881.0721 or 229.881.2705. CannonMarketingCompany@gmail.com.

COLQUITT COUNTY

Every Wednesday, 1 p.m.: Cattle; Moultrie Livestock Co., 1200 1st Street N.E., Moultrie. **Call** Randy Bannister, 229.985.1019

COOK COUNTY

1st & 3rd Saturdays, 1 p.m.: Cows, goats, sheep, chickens, small animals; Deer Run Auction, 1158 Parrish Road, Adel. **Call** Matthew Culpepper, 229.560.0595

DECATUR COUNTY

2nd Saturdays, 1 p.m.: Goats, sheep, chickens, small animals; Waddell Auction Co., 979 Old Pelham Road, Climax. **Call** John Waddell, 229.246.4955

EMANUEL COUNTY

Every Tuesday, 12:30 p.m.: Cattle; Southern Livestock, 131 Old Hwy 46, Oak Park. **Call** Clay Floyd, Dustin Miller and Cody Copelan, 912.578.3263.

2nd & 4th Saturdays, noon:

Goats, sheep, chickens, small animals; R&R Goat & Livestock Auction, 560 GA Hwy. 56 N, Swainsboro. **Call** Ron & Karen Claxton, 478.455.4765

FRANKLIN COUNTY

Every Tuesday, noon: Cattle, goats, sheep; Franklin County Livestock Sales, 6461 Stone Bridge Road, Carnesville. **Call** Chad Ellison, 706.384.2975 or 706.384.2105

GORDON COUNTY

Every Tuesday, 9:30 a.m. and 12:30 p.m.: Sheep and goats at 9:30 a.m., Cattle at 12:30 p.m.; Calhoun Stockyard Hwy. 53, 2270 Rome Road SW, Calhoun. **Call** Gene Williams & Adam Williams, 706.629.1900

GREENE COUNTY

Every Monday, noon: Cattle, goats, sheep; Duvall Livestock Market, 101 Apalachee Ave., Greensboro. **Call** Jim Malcom, 706.342.5655; JD Hidgon, 706.817.6829; or main office, 706.453.7368

JEFF DAVIS COUNTY

1st Fridays: Horse sale, 7:30 p.m.; Circle Double S, 102 Lumber City Highway, Hazlehurst. **Call** Steve Underwood, 912.594.6200 (night) or 912.375.5543 (day)

LAMAR COUNTY

Every Friday, 6 p.m.: Goats, sheep, chickens, small animals; **5 p.m.:** farm miscellaneous, Ga. Lic. #4213; Buggy Town Auction Market, 1315 Highway 341 S, Barnesville. **Call** Krystal Burnett 678.972.4599

LAURENS COUNTY

2nd & 4th Thursday, 6 p.m.: Goats, sheep, chickens, small animals; Horse Creek Auction Co., 5971 Hwy. 441 S, Dublin. **Call** Daniel Harrelson, 478.595.5418

MARION COUNTY

1st & 3rd Thursdays, 7 p.m.: Goats, sheep, chickens, small animals; Auction 41, 4275 GA Hwy. 41 N, Buena Vista. **Call** Jim Rush, 706.326.3549. **Email** rushfam4275@windstream.net

PULASKI COUNTY

Every Tuesday, 1:30 p.m.: Cattle, goats, sheep; Pulaski County Stockyard, 1 Houston Street, Hawkinsville. **Call** John Walker, 478.892.9071

SEMINOLE COUNTY

Every Wednesday, 1:30 p.m., 3rd Saturday Special Sale, 1:30 p.m.: Cattle, goats, sheep; Seminole Livestock Exchange, 5061 Hwy. 91, Donalsonville. **Call** Luke Spooner, 229.524.2305

STEPHENS COUNTY

2nd Saturdays, 5 p.m.: W&W Livestock, Eastanollee Livestock Auction, Eastanollee. **Call** Brad Wood, 864.903.0296

3rd Saturdays, noon: Goats, sheep; Agri Auction Sales at Eastanollee Livestock Market, Highway 17 between Toccoa and Lavonia. **Call** Ricky Chatham, 706.491.2812 or Jason Wilson, 706.491.8840

Every Monday, noon: Cattle, goats, sheep; Eastanollee Livestock, 40 Cattle Drive, Eastanollee. **Call** Mark Smith, 706.779.5944

SUMTER COUNTY

Every Monday, 1 p.m.: Cattle; Sumter County Stockyard, 505 Southerfield Road, Americus. **Call** Aaron and Anna White, 229.380.4901 or 864.704.2487

TAYLOR COUNTY

1st & 3rd Saturdays, 6:30 p.m.: Feeder pigs, goats, sheep, chickens, small animals. Receiving: 8 a.m.; Animals sale 2 p.m. Taylor County Livestock Auction, 1357 Tommy Purvis Jr. Road, Reynolds. **Call** 678.914.7333

THOMAS COUNTY

Every Tuesday, 1 p.m.: Cattle. Thomas County Stockyards, 20975 Hwy. 19 N, Thomasville. **Call** Danny Burkhardt, 229.228.6960

TOOMBS COUNTY

1st & 3rd Saturdays, 11 a.m.: Feeder pigs, goats, sheep, chickens, small animals; Metter Livestock Auction, 621 Hwy. 1 S, Lyons. **Call** Lewie Fortner, 478.553.6066

TURNER COUNTY

Every Wednesday, 1 p.m.: Cattle; Turner County Stockyards, 1315 Hwy. 41 S, Ashburn. **Call** Alan Wiggins, 229.567.3371

UPSON COUNTY

Every Tuesday, 12 p.m.: Cattle, goats, sheep, horses. Upson County Livestock, 2626 Yatesville Hwy., Thomaston. **Call** Aaron and Anna White, 864.704.2487 or 770.713.5045

WILKES COUNTY

Every Tuesday, noon: Cattle, goats, sheep; Wilkes County Stockyard, Hwy. 78 Bypass/302 Third Street, Washington. **Call** Josh Saggus, J.F. Hansford, Mason Cronic and Walker Moore, 706.678.2632

Notices for auctions selling farm-related items other than livestock must be accompanied by the auction license number of the principal auctioneer or auction firm conducting the auction, per regulations from the Georgia Secretary of State. Auctions without this information will not be published. Have an auction to put on our calendar? Contact Jay Jones at 404.656.3722 or jay.jones@agr.georgia.gov.

Nigerian Dwarf billy goats, will be polled, no horns to get caught in fence. Two solid white, one black with white ears: \$150. Ready by 2/21/25. Larry R. Pirkle **Dawsonville** 706-216-2954

SHEEP

1-4 y/o Katahdin ewes bred to registered St. Croix ram. Due Feb-March. Katie Hufford **Cleveland** 706-348-5187

2 y/o Katahdin Ewe, good mother, had twins on our farm: \$275-\$300. David Hinton **Tignall** 706-401-8235

Katahdin Dorper cross ram born 1/5/25 will be ready 3/16/25: \$200. Pictures available upon request Dusty Herndon **Baxley** 912-278-9242

Katahdin ram for sale, part of a healthy flock: \$250. Margaret Sherman **Canon** 706-308-2250

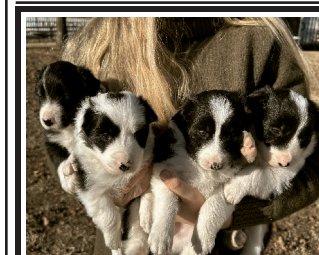
Katahdin rams for sale. 6-12 mos old: \$150-\$200. Call or text Diana Hegger **Royston** 404.431.7514

STOCK DOGS

Ads in this category are limited to breeds recognized by the American Kennel Club as herding and/or working dogs (in an agricultural context). Ads for breeds that do not meet those definitions will not be published.

Advertisers must submit a copy of a current Rabies Vaccination Certificate signed by a licensed veterinarian for dogs 12 weeks and older and include the ages of all dogs being advertised. Ads submitted without this information will not be published.

AKC Belgian Malinois puppies, born Dec. 17. Will have 6-week vaccination and worming: \$1200. Calls only. Andrew Frantz **Cleveland** 706-969-0334



Border Collie puppies, born 11/24/24, purebred; 4 females. They have had vet check and vacs, and have been raised around kids, sheep, barn cats, and chickens. Angela Crane **Canton** 770-712-1456

Border collie puppies. Mom is black and white dad is red and white: \$225. Call to get yours. Weston **Waynesboro** 478-299-8690

Karakachan purebred puppies, 5 females, 1 male. Both parents raised on our farm w/minature cows, sheep, cats, grandkids. Wonderful, smart, loyal breed: \$500. Eric **Crawford** 678-825-7514

Tibetan Mastiff LGD. Working bloodlines. Parents on site, pups will be immersion training for 12 weeks with goats, pigs, sheep, poultry. Loyal family and farm guardians. Spencer **Barnesville** 515-447-2458

BARN CATS

Barn cats available: no charge. Calls only. Jeannette **Temple** 770-316-9480

Floyd Felines has barn cats in NW GA at no cost to you. Cats are neutered/vaccinated. Must provide daily food, water. Email/text. Floyd Felines, Angie **Rome** spayfloyd@felines@gmail.com 706-512-7004

Fixed/vaxed, healthy, socialized/semi-socialized, some raised indoors, litter box trained. Photos on request. Will personally deliver to you, insuring safe habitat: free, you feed, water & shelter. Brent **Cumming** 770-378-2711



Got rats? Adopt some barn cats! Shelter rescues - fixed, vacc'd & delivered at no cost. You provide food, water, shelter. Call/text. Linda **Oconee Co.** 706-343-8173 barncatsgeorgia@gmail.com

RABBITS

New Zealand meat bunnies from pedigree stock. Different bloodlines to start your breeding program. Ready for new homes end of Jan/mid February. J. Porter **Bostwick** 706-380-7222

Tamuk rabbits. (12) 3m/o rabbits, 8 males, 4 females: \$35 each. Also have a litter of 11 kits available on 1/25/25. Text for info. Carly Hyde **Covington** 678-209-6943

POULTRY/FOWL

Any person engaged in buying live poultry of any kind for resale, or in selling live poultry of any kind bought for resale, must be licensed by the GDA. Possessing such a license does not by itself disqualify an individual from advertising poultry in the *Market Bulletin*. Mallard ducks must be at least three generations from the wild before they can be advertised in the *Market Bulletin*. Advertisers must include this information in notices submitted for publication. Out-of-state poultry must have a negative Avian Influenza test and negative pulorum test within 21 days of entering Georgia. For more information, call the GDA Livestock and Poultry Division, 404.656.3665.

(25) 2y/o (4/25) Golden Comet hens and (25) 1y/o Plymouth Rock hens: \$10 each or \$7 each for all. JR Burnette **Morganton** 706-633-0302

5 month old Americana Rooster. Call for price. Ed **Cleveland** 706-348-3235

Assorted chickens - baby to adult; ducks, guineas, rabbits, goats, sheep also. Sherry Amerson-White **Augusta** blackberrycreekminifarm@gmail.com 706-833-5535

Ayam Cemani chickens for sale. Starting at \$35 for baby chicks. I have adults, pairs and baby chicks for sale contact. Travis Yarbrough **Davisboro** 478-232-2743.

Blue Laced Wyandotte mixed rooster about 2 years old: \$10. Great protector and polite around people. Kimberly Akin **Moreland** 770-309-6220

Blue-laced red Wyandott pullets. Beautiful, healthy & clean environment. Hatched July 01, 2024: \$45/ea. Near Griffin. Kelley **Williamson** 404-858-9884

For sale peafowl, yearlings, white, pied, Black Shoulder, Blue Indie: \$100 each. Mike Shepard **Douglasville** 678-778-3659

Peacocks for sale. Blue, white and black shouldered: \$200-\$400. Candi Whitman **Auburn**, AL 706-426-2813

CATTLE



Registered miniature Paint Jersey 2-year-old proven bull. A2/A2, dam-raised, polled, friendly, 40-inches tall. Parents on premises, dam has an excellent udder and supporting ligaments: \$1800. Stephanie **Wrens** 631-576-9900

SWINE

Advertisers submitting swine ads must submit proof of a negative brucellosis and pseudorabies test from within the past 30 days. Exceptions are swine from a validated brucellosis-free herd and/or qualified pseudorabies-free herd; these operations must submit proof of those certifications. Buyers are urged to request proof of a negative brucellosis pseudorabies test prior to purchase. Feral hogs may not be offered for sale or advertised in the *Market Bulletin*. Kune Kune piglets, 4 females, 8 weeks old Registered parents on premises: \$200 each Candice Miller **Linton** 864-978-1366

Meishan pigs, 8 weeks old: \$75/ea. Ed Shealey **Douglasville** 678-249-7319

GOATS

All goats offered for sale must be individually identified in compliance with the USDA Scrapie Program. For more information, please call the GDA Animal Health Division at 404.656.3667.

1 wethered male Boer, 6y/o, approx. 200lbs, great companion for bucks or other goats, brown color: \$400. Eddie Smith **Covington** 678-414-9732

Full-blooded Boer bucks, black tricolor, 3y/o: \$400; traditional 1.5y/o: \$285; others: \$250 & up. Call/text. Steve Gore **Tallapoosa** 470-241-0483

Kiko goats for sale. Ken Hughes **Oxford** 770-596-2381

Kiko wether, 1.5 years old. Pretty black, little white. Can text photos. He's a pet: \$100. R. Conley **Conyers** 770-851-2623



ABGA registered white and black spotted dappled Boer goat, buck, 7m/o. Vaccinated, scrapie tagged, ears tattooed: \$750. Certificate of registration in hand. S. Wright **Ellijay** 706-889-0999

Kiko purebred goats for sale. 10 boys 10 girls available. All are 5 months old. Boys are 60 to 80lbs. Gospel Life Farms. Charlie Aycock **Gillsville** 678-776-6192

Pure Spanish billy, Koy/Kensing Bloodline, 4 y/o: \$400. Can send pictures. Call or text. Ronny Whitmire **Elberton** 706-680-4354

988 LÍNEA DE PREVENCIÓN DEL SUICIDIO Y CRISIS

POULTRY/FOWL

Any person engaged in buying live poultry of any kind for resale, or in selling live poultry of any kind bought for resale, must be licensed by the GDA. Possessing such a license does not by itself disqualify an individual from advertising poultry in the *Market Bulletin*. Mallard ducks must be at least three generations from the wild before they can be advertised in the *Market Bulletin*. Advertisers must include this information in notices submitted for publication. Out-of-state poultry must have a negative Avian Influenza test and negative pul-lorum test within 21 days of entering Georgia. For more information, call the GDA Livestock and Poultry Division, 404.656.3665.

Game chickens. 6 pullets, 4 stags, round head, Albany crosses: \$50 each. Wayman Jordan **Douglasville** 404-245-9374

Pigeons - white homers, white rollers, turner rollers & colored rollers: \$22/pair. Wyatt Johnson **Midville** 478-494-3240

Pigeons and peacocks for sale. Frizzle back pigeons & BS, violet peacocks. M. Campbell **Danielsville** 762-316-9767

Roundhead stags and Law Gray crosses for sale. Bacle Fowler **Jasper** 770-652-6787

Several different breeds of the Old English Bantams: \$20/pair \$30/trio; Blacks, BB reds, blue reds, golden duck wings. Available for trade Johnny Reece **Woodstock** 404-947-9189



Straight-run chicks and rabbits for sale throughout the year. Holland Lops, Lionheads, Lion-Lops. Easter Eggers, Ameraucanas, BCM, Olive Eggers, Silkie chickens. Rainbow Eggs. Text 9am-8pm. Tyler Martinez **Commerce** 706-410-8954

White hackles, real good. Ronald Shepard **Fortson** 762-247-9104

ANIMAL EQUIPMENT AND SUPPLIES

CATTLE SUPPLIES

2 hay rings with hay saver: \$125 each; other rings, some with rust, but usable, repairable. Cash only. Call, leave message. Benny Horton **Danville** 478-962-3231

Tarter Series 3 w/ auto chute, gate corral panels, 50-gallon water trough. Tarter metal feeders 10ft, round mineral feeder. panel corral 10 & 12ft. Olga Martell **Montezuma** 305-610-4447

TACK AND SUPPLIES

Leather English saddle. Like new condition: \$250. Like New. Can meet in Austell for pickup if needed. Tom Tucker **Taylorville** 678-776-0038

POULTRY SUPPLIES

Box furnaces from chicken houses. LB White Guardian, natural gas: \$200 each. Eddie Hatcher **Comer** 706-247-5267

Egg cartons, holds 18 eggs. About 100 in total. Free OBO. Patricia Pettit **Adairsville** 770-387-6719

Four feed bins for sale. Three 18-ton, one 14-ton: \$400 each. You remove. No calls after 8 p.m. Brent Ponder **East Ellijay** 706-273-1544



Poultry pens for sale. 3x8x3 approx. 6ft tall, wrapped with 1/2-inch hardware cloth: \$325 each. 5 pens available. Danny Dalton **706-270-4049**

FEED SUPPLIES

18-ton used feed bin good condition: \$700; 2-wheel liquid supplement tank: \$250 good condition; 150-gallon propane tank good condition: \$250. D. Harrison **Cornelia** 770-601-2363

MISCELLANEOUS

Only agriculture-related items may be advertised in this Category.

BEEES, HONEY AND SUPPLIES

10, 8, and 5 frame equipment, 5 Frame NUCS, 3# packages, beekeeping supplies, insulated hives, HivelQ hives, classes, honey (wildflower, sourwood, gallberry). swarm capture, Banks/Jackson counties. **Commerce** harold@lanierbee-barn.com 678-471-7758

5-frame VSH Pol-Line 2.2 and VSH Spartan NUCs and Queens; Wildflower, Sourwood, Creamed and Infused Honey; Licensed Honey Bee Removal **Commerce** (706) 362-4951 BerryLaneBees.com berrylanebeesga@gmail.com

Bee wax for sale: \$10 per pound. I have a 14, 15, 16, 17, 18, and 18 pound blocks. Pickup in Maysville (Banks County). Jim Ellis **Maysville** 770-900-4967

Nucs, queens, packages & beekeeping classes. Melissa **Monticello** www.gsbeez.com. 312-909-3050

Spring Vegetable Planting Chart

| Vegetable | Days to Maturity | Planting Dates | Seeds/Plants per 100 ft. | Spacing Rows per plants | Depth to Plant |
|------------------|------------------|------------------------------|--------------------------|-------------------------|----------------|
| Asparagus | 2nd year | Jan. 15-Mar. 15 | 50 roots | 36" x 18"-24" | 6" |
| Beans, bush | 50-60 | Mar. 15-May 1 | ½ pound | 36" x 2"-4" | 1"-1 ½" |
| pole | 65-75 | Mar. 15-May 10 | ½ pound | 36" x 4"-12" | 1"-1 ½" |
| lima | 65-75 | Mar. 15-June 1 | ½ pound | 36" x 3"-4" | 1"-1 ½" |
| pole lima | 80-85 | Mar. 15-June 1 | ½ pound | 36" x 6"-8" | 1"-1 ½" |
| Beets | 55-65 | Feb. 15-April 1 | 1 ounce | 18"-36" x 2" | ½" |
| Broccoli | 60-80 | Feb. 15-March 15 | 100 plants | 36" x 12" | ———— |
| Butterpea | 70 | April 1-May 1 | ½ pound | 36" x 3"-4" | 1"-1 ½" |
| Cabbage | 70-120 | Jan. 15-Mar. 15 | 100 plants | 36" x 12" | ———— |
| Cantaloupe | 80-90 | Mar. 20-June 20 | 1 ounce | 60" x 36" | 1" |
| Carrot | 70-95 | Jan. 15-March 20 | ½ ounce | 18-36" x 2"-3" | ¼" |
| Cauliflower | 60-75 | Mar. 1-April 1 | 100 plants | 36" x 12" | ———— |
| Collards | 55-85 | Feb. 1-March 15 | ½ ounce | 36" x 8"-16" | ½" |
| Corn, yellow | 65-90 | Mar. 15-June 1 | ¼ pound | 36" x 12"-18" | 1"-1 ½" |
| white | 65-90 | Mar. 15-June 1 | ¼ pound | 36" x 12"-18" | 1"-1 ½" |
| bi-color | 65-90 | Mar. 15-June 1 | ¼ pound | 36" x 12"-18" | 1"-1 ½" |
| Cucumber: | | | | | |
| slicing | 50-65 | April 1-May 15 | 1 ounce | 60" x 12" | ½"-¾" |
| pickling | 50-65 | April 1-May 15 | 1 ounce | 60" x 12" | ½"-¾" |
| gynoecious | 50-65 | April 1-May 15 | 1 ounce | 60" x 12" | ½"-¾" |
| Eggplant | 75-90 | April 1-May 15 | 50 plants | 36" x 24" | ———— |
| Kale | 50-70 | Feb. 1-Mar. 10 | ½ ounce | 36" x 8"-16" | ½" |
| Lettuce | 60-85 | Jan. 15-Mar. 1 | ¼ ounce | 18"-36" x 8-12" | ⅛" |
| Mustard | 40-50 | Jan. 15-April 1 | ½ ounce | 18"-36" x 2" | ½" |
| Okra | 55-65 | April 1-June 1 | 1 ounce | 36" x 12" | 1" |
| Onion, green | 60-90 | Jan. 1-Mar. 15 | 300 plants | 18"-36" x 3" | ———— |
| dry bulb | 100-120 | Jan. 1-Mar. 15 | 300 plants | 18"-36" x 3"-4" | ———— |
| Peas: | | | | | |
| garden (English) | 60-70 | Jan. 15-Feb. 15 | 1 pound | 36" x 2" | 1"-2" |
| edible pod | 60-70 | Jan. 15-Feb. 15 | 1 pound | 36" x 2" | 1"-2" |
| Southern | 60-70 | April-Aug. 10 | ½ pound | 36" x 3"-4" | 1"-2" |
| Peppers, bell | 65-80 | April 1-June 1 | 50 plants | 36" x 24" | ———— |
| hot | 65-95 | April 1-June 1 | 50 plants | 36" x 24" | ———— |
| hot-sweet | | April 1-June 1 | 50 plants | 36" x 24" | ———— |
| Potatoes, Irish | 70-90 | Jan.15-Mar. 1 | 12 pounds | 36" x 12" | 4"-5" |
| Sweet | 90-120 | April 15-June 15 | 100 plants | 36" x 12" | ———— |
| Pumpkin, tiny | 85-120 | | 1 ounce | 72" x 48" | 1" |
| pie type | 85-120 | May 15-July 1 | 1 ounce | 72" x 48" | 1" |
| small | 85-120 | (Depending on maturity date) | 1 ounce | 72" x 48" | 1" |
| large | 85-120 | | 1 ounce | 72" x 48" | 1" |
| giant | 85-120 | | 1 ounce | 72" x 48" | 1" |
| Radish | 25-30 | Jan. 15-April 1 | 1 ounce | 24" x 1" | ½" |
| Spinach | 40-45 | Jan. 15-Mar. 15 | 1 ounce | 18"-36" x 2" | ½"-¾" |
| Squash: | | | | | |
| summer | 40-55 | April 1-May 15 | ½ ounce | 36" x 24" | 1"-2" |
| (zucchini) | | | | | |
| winter | 85-120 | April 1-July 1 | ½ ounce | 60" x 36" | 1"-2" |
| Tomato: cherry | 70-90 | Mar. 25-May 1 | 50 plants | 48" x 24" | ———— |
| grape | 70-90 | Mar. 25-May 1 | 50 plants | 48" x 24" | ———— |
| determinate | 70-90 | Mar. 25-May 1 | 50 plants | 48" x 24" | ———— |
| indeterminate | 70-90 | Mar. 25-May 1 | 50 plants | 48" x 24" | ———— |
| Turnip | 40-60 | Jan. 15-April 1 | ½ ounce | 18"-36" x 2" | ½" |
| Watermelon: lg. | 80-90 | Mar. 20-May 1 | 1 ounce | 72" x 36-48" | 1"-2" |
| round | 80-90 | Mar. 20-May 1 | 1 ounce | 72" x 36-48" | |
| small | 80-90 | Mar. 20-May 1 | 1 ounce | 72" x 36-48" | |

Adapted from the University of Georgia Cooperative Extension Service



Know what's below. Call before you dig.

News Briefs: Workshop on rehab therapy for farmers, ranchers with disabilities planned

Occupational and physical therapists and other health professionals are invited to a two-day Rehab Farmers workshop about assisting disabled farmers and ranchers return to work. The workshop will be held March 6-7 at the Coastal Georgia Botanical Gardens in Savannah.

The workshop sessions will be hosted by Farm Again, a program managed by the University of Georgia's Cooperative Extension Service in the College of Agricultural and Environmental Sciences and the Institute on Human Development and Disability in UGA's College of Family and Consumer Sciences. Farm Again is a free service and focuses on promoting independence for members of the agricultural community who have injuries, disabilities or chronic health conditions.

Sessions will include hands-on instruction provided by the Shepherd Center and UGA and a full-day of farm tours for health professionals to better understand the work and tasks required to operate farm operations from cattle to aquaculture. Participants can expect to learn about farm culture, daily work demands, how to communicate effectively with patients who are farmers, and available assistive technology solutions.

Registration cost is \$295, which includes meals, tour costs and resources. To learn more, visit the website farmagain.com/rehabfarmer or call 706-542-3963.

Toews named associate dean of UGA Extension



Michael-Toews

Dr. Michael Toews was named the new associate dean for Extension at the University of Georgia beginning April 1, according to an announcement by UGA College of Agricultural and Environmental Sciences Dean Nick Place.

Toews (rhymes with Dave's) has been with CAES since 2006. He is currently the assistant dean for the UGA Tifton campus, a position he has held since March 2020.

Toews received a B.S. in biology from Fort Hays State University in Kansas, followed by M.S. and Ph.D. degrees in entomology from Oklahoma State University. After his post-doctoral fellowships at Kansas State University and the USDA's Agricultural Research Service, he joined the UGA faculty as a research entomologist responsible for insect ecology and integrated pest management.

Current UGA associate dean for Extension, Dr. Laura Perry Johnson, announced her retirement earlier this academic year. She has served UGA-CAES for over 35 years with extensive work with Georgia 4-H. She has served as associate dean for Extension since 2015.

GDA Structural Pest celebrates 70 years of service with new video

The Georgia Department of Agriculture's Structural Pest Division is celebrating 70 years of service to the state by releasing a new promotional video. The video features Division Director Derrick Lastinger and his team of inspectors discussing their work and its impact on Georgia residents and businesses.

The video can be found on the GDA's Facebook page (facebook.com/GaDeptAg/videos) and shows Structural Pest employees providing information about the Division, including the 1,500 inspections done annually and ensuring over 5,000 termite treatment standards are met yearly.

The video is the first in a series of public outreach initiatives planned by the Division for 2025. This effort includes an awareness campaign for National Pest Awareness Month in April, which will focus on educating the public about the importance of proper pest control and prevention.

The Georgia Department of Agriculture's Structural Pest Division regulates the state's structural pest control industry. This includes licensing and regulating pest control companies, investigating consumer complaints, and conducting inspections to ensure compliance with state regulations.

For more information, visit the Structural Pest webpage at agr.georgia.gov/structural-pest-control.

USDA to gather final pecan production data for 2024 crop

Staff Reports

Georgia pecan growers can make their voices heard by participating in the 2024 Pecan Production and Disposition Inquiry from the USDA's National Agricultural Statistics Service (NASS) through Feb. 14.

The collected data will help producers, buyers, state and federal agencies, and agricultural researchers assess the pecan market. According to Anthony Prillaman, director of the NASS Southern Regional Field Office, NASS data are the only impartial source of detailed pecan acreage, yield, production, price, and value for Georgia and the nation.

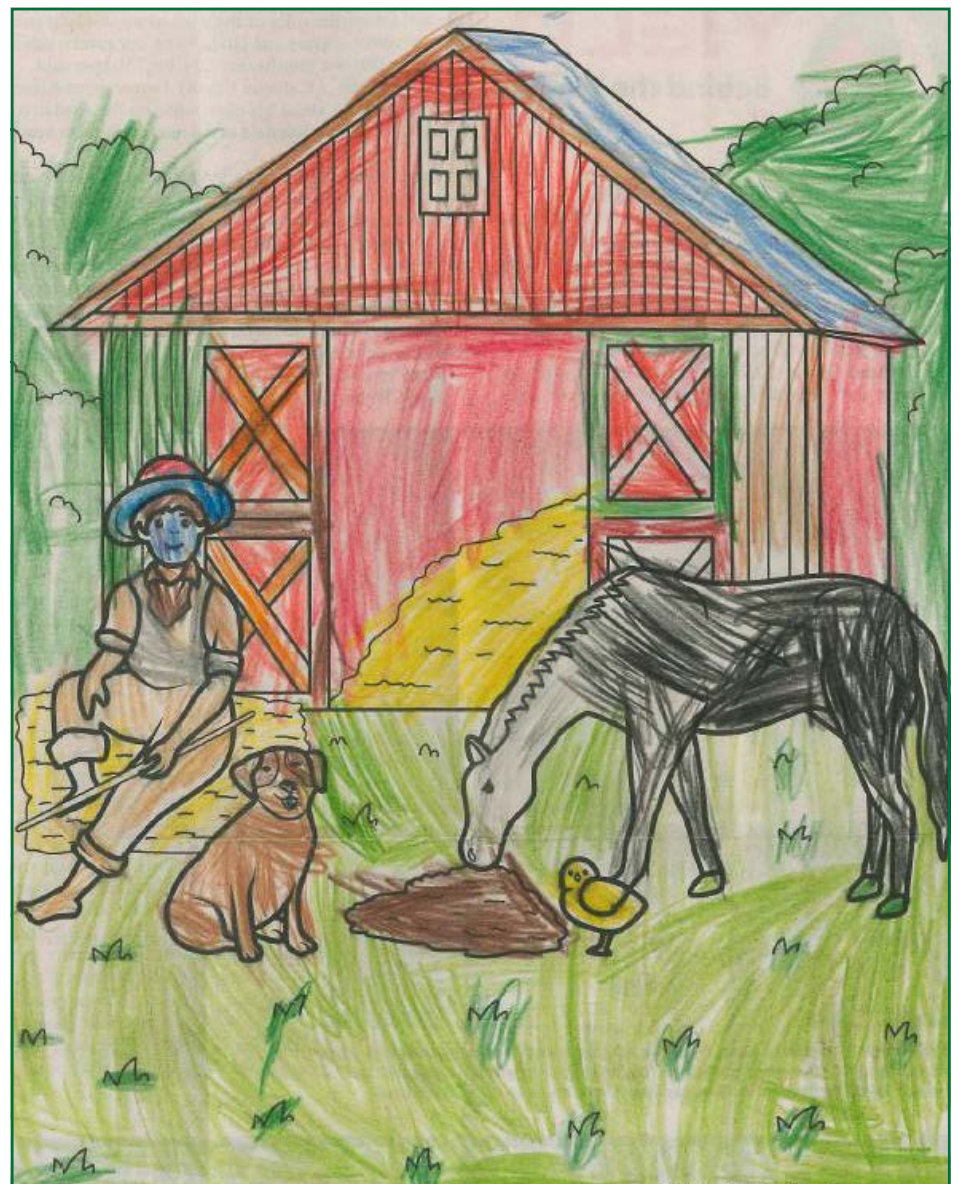
"The pecan industry is an important part of U.S. agriculture, especially in Georgia, and it is crucial for us to have accurate data about this key sector of the economy," Prillaman said. "Approximately 2,600 pecan producers from across the country, including more than 300 in Georgia, will be contacted. I encourage every grower who receives a survey to respond to help us measure the 2024 pecan crop that has seen so many weather challenges."

Growers can provide their responses securely online at agcounts.usda.gov, by mail or fax. If no response is received by Feb. 14, growers may be contacted by a NASS representative for a telephone or in-person interview.

NASS will publish the data on May 2 in the Noncitrus Fruits and Nuts Summary report at nass.usda.gov. NASS safeguards the privacy of all respondents and publishes only aggregate data, ensuring that no individual operation or producer can be identified in accordance with federal law.

For more information, call the NASS Southern Regional Field Office at 800-253-4419.

Staff reports in the Market Bulletin are submitted by outside organizations concerning agricultural-related topics in Georgia. A submission does not guarantee publication. The editor retains the right to accept and edit submitted articles. Submissions can be sent to marketbulletin@agr.georgia.gov



Fun on the farm!

Kenslee Grace Kaeg, granddaughter of *Market Bulletin* subscriber Teresa Vanhorne provided us with this wonderful submission of the Kid's Page coloring page in the Oct. 30 issue. "She colored this one afternoon at my house, and I told her I would mail it in," Teresa wrote. "I hope you all think it's as great as I do." We certainly do. Thank you, Kenslee! Share your colorful creations to be published in the *Market Bulletin*. Submit your Fun on the Farm artwork to marketbulletin@agr.georgia.gov.



FARMERS & CONSUMERS MARKET BULLETIN (ISSN 0889-5619)

is published biweekly by the Georgia Department of Agriculture
19 Martin Luther King Jr. Drive
Atlanta, GA 30334-4250
404-656-3722 • Fax 404-463-4389
Office hours 8 a.m. to 4:30 p.m. Monday – Friday

Tyler Harper, Commissioner MARKET BULLETIN STAFF

Jay Jones, **Editor**
Nicholas Vassy, **Business Manager**
Lee Lancaster, **Contributing Writer**

Subscriptions to the Farmers and Consumers Market Bulletin are \$10 per year. To start or renew a subscription, go to our website to pay by Visa or MasterCard, or send a check payable to the Georgia Department of Agriculture along with your name, complete mailing address and phone number to PO Box 742510 Atlanta, GA 30374-2510. Designate "Market Bulletin" in the "for" line. To determine if an existing subscription is due for renewal, look for the expiration date on the mailing address label on page 1. Postmaster: Send address changes to 19 Martin Luther King Jr. Drive, Atlanta, 30334.

The Department does not discriminate on the basis of sex, race, color, national origin, age or disability in the admission or access to, or treatment in, its employment policy, programs or activities. The Department's Administration Division coordinates compliance with the non-discrimination requirements contained in Section 35.107 of the Department of Justice Regulations. Information concerning the provisions of the Americans with Disabilities Act, and the rights provided thereunder, are available from this division. If you require special assistance in utilizing our services, please contact us.

FORESTRY MATTERS: Wildfire mitigation, tree planting leads into busy February

By Stasia Kelly
Georgia Forestry Commission

Forest landowners impacted by Hurricane Helene are finding some relief in their inboxes. Emails from the Georgia Forestry Commission are notifying many grant applicants their funding for state relief has been approved.

Fieldwork is beginning for two separate programs addressing wildfire risk and public safety in disaster-declared counties. Twenty-two million dollars is earmarked for the Fuel Mitigation program, and \$3 million is being distributed through the Firebreak and Forest Road program.

The Fuel Mitigation program intends to offset landowners' costs for work that reduces wildfire risk. It includes practices that improve access, reduce forest fuel loads, and reduce wildfire threats in the wildland-urban interface. Reimbursement for services will be made on an 80-20 cost share basis (not to exceed a designated amount) by the Georgia Development Authority.

The Firebreak and Forest Road program aims to restore and improve forest road access and previously installed firebreaks. Criteria for this program included countywide damages and their subsequent wildfire risk, severity of damage to individual proper-



Tree saplings are packed for delivery to land owners this month. Tree planting is in full swing this time of year and February is the ideal month to do just that. Georgia's Arbor Day is Feb. 21 (always the third Friday) this year, and celebrations are scheduled throughout the month statewide. (GFC/Special Photo)

ties, and proximity to nearby structures and communities.

As news reports continue to cover recent California wildfires, the importance of defensible space is made clear. The

Georgia Forestry Commission (GFC) is busy helping landowners mitigate their risk of wildfire and plan for the future through prescribed burning and reforestation.

Tree planting is in full swing this time of year and February is the ideal month to do just that. Georgia's Arbor Day is Feb. 21 (always the third Friday) this year, and statewide celebrations are scheduled throughout the month. National Arbor Day is in April, but by then, our trees are leafing out and enjoying the warm spring air. Trees are best planted when they are dormant before spring leaves appear. Planting early in the year also gives the trees more time to send out roots that find water before the hot summer arrives.

Whether you're planting seedlings in a backyard or a vast plantation, the GFC can assist! Our online seedling store at GaSeedlings.org remains open for your shopping pleasure. The store opens in July, and deliveries are in progress, so some species' inventory is dwindling. However, there's still time to make your selections, so check in soon.

And there's nothing like the fragrance of fresh-turned Georgia soil! Why not get your hands dirty and enjoy the wonder of watching a seedling take hold and turn into your next big, healthy tree?

Charles Hall, GFVGA executive director emeritus, dies at 74

Staff Reports

Charles Hall, executive director emeritus of the Georgia Fruit and Vegetable Growers Association, passed away on Jan. 20. He was 74.

Hall was the founder and former CEO of Association Services Group, LLC, a LaGrange-based association management company. After founding ASG in 1995, Hall brought on the Georgia Fruit and Vegetable Association as one of his first clients. At that time, one of the key objectives in GFVGA's mission statement was for the new association to become the voice of Georgia's produce industry, according to the GFVGA in announcing Hall's passing.

Hall served a major role in the growth of the GFVGA, which hosts the annual Southeast Fruit and Vegetable Conference, one of the largest regional agricultural trade shows in the country. Hall attended the conference in Savannah Jan. 9-11.

Chris Butts, GFVGA executive vice president, honored Hall and noted that a generation of industry leadership developed under his guidance all working to advance the industry and provide better opportunities for growers.

"Charles was more than a leader to our industry and the farmers and producers he worked so hard to protect," Butts said in a statement. "Our industry will miss his leadership, but we will also miss our friend."

Hall was known for servant leadership, love of agriculture, and passion for associations. He was instrumental throughout his life and career in building trade associations

that would go on to do great things within their industries, according to the announcement.

"Since founding ASG 30 years ago this year, Charles has

He genuinely loved our team, and he was loved in return," Katie Oxford, ASG chief executive officer, said in a statement.



Charles Hall, left in red vest, collects entries in a raffle supporting the Fruit and Vegetable PAC during last month's Southeast Fruit and Vegetable Conference in Savannah. Hall, who died on Jan. 20 after an illness, was instrumental in building the Georgia Fruit and Vegetable Growers Association during 30 years of service. (GDA/Nick Vassy)

remained dedicated to serving his clients and supporting his team. He is a respected leader in the association management industry and a cherished member of our ASG family.

Hall was a University of Georgia alumnus and former chairman of the board of the UGA College of Agricultural and Environmental Sciences Alumni Association. He was recognized for his industry and association leadership multiple times.

In 2011, Hall was awarded the Clifford Clark Award as the outstanding association executive in Georgia by the Georgia Society of Association Executives. Then in 2018, he was named a member of 'The Packer 25,' an annual award that recognizes 25 leaders, innovators, and changemakers in the fresh produce industry by The Packer, a national trade publication.

He received the Glenn Bostrom Award in 2019 for outstanding career achievement from the Association Management Company Institute, and then in 2022 upon his retirement, Hall was awarded the "Friend of the County Agent" Award – the highest honor awarded by the University of Georgia Cooperative Extension Agent Association.

Hall is survived by his wife, Jan; and their children, Emily Brewton (Wendell) and Tamlin Hall; and six grandchildren.

Hall's obituary can be found at www.dignitymemorial.com, and search for Charles Tamlin Hall Jr.

In lieu of flowers, the family asks that donations be made in Hall's memory to First Baptist Church on the Square of LaGrange, where he served as a deacon, usher and greeter.

GDA Law Enforcement seize 136 neglected dogs from south Georgia kennel

Staff Reports

Investigators with the Georgia Department of Agriculture's Law Enforcement Division said they seized 136 neglected dogs from a kennel in Pierce County in south Georgia last month.

Georgia Agriculture Commissioner Tyler Harper announced on Jan. 23 that the GDA Law Enforcement Division executed a search warrant at the Pierce County kennel and seized the dogs from the property after they received a tip regarding alleged animal abuse at a local kennel. State and local personnel at the property took the animals to a secondary location where veterinary care was provided onsite. Harper said the Department was working with rescue organizations to foster out the seized animals as quickly as possible.

"I am incredibly proud of the work our Law Enforcement team did to remove these dogs and address this situation," Harper said in a statement. "Our Law Enforcement Division is working every day to send a clear message that crime in Georgia's agricultural sector – from animal abuse to drug and labor trafficking and everything in between – will not be tol-

erated, and our Companion Animal and Equine team works diligently each day to ensure our state's companion animals and equine are properly cared for."

Harper added that GDA would continue a partnership with Georgia Statewide Animal Crimes Prosecutor with the Prosecuting Attorneys' Council of Georgia to "ensure those who commit crimes in the agricultural sector are held accountable."

GDA Law Enforcement investigators followed up on the tip, which led them to accompany GDA Companion Animal and Equine inspectors to inspect the property. During that inspection, investigators found violations of the Department's rules and regulations as well as state law providing probable cause to obtain and execute a search warrant on the property, according to the press release announcing the animal seizure.

During the execution of the search warrant, evidence, including live animals, was collected and seized by the Georgia Department of Agriculture, the press release stated.

GDA investigators did not say if anyone had been arrested in the case or if local law enforcement was expected to take out charges against the kennel owner.

The Georgia Department of Agriculture is working with local rescue groups to rehome or foster the seized animals. The rescue groups include:

- Renegade Paws Rescue of Savannah (www.renegadepawsrescue.org)
- K9 Battle Buddies of Hinesville (www.k9bb.org)
- Allmon's All About Animals of Blackshear (Facebook: Allmons All About Animals)
- Liberty County Animal Services (www.libertycountyga.com)
- Atlanta Humane Society (<https://atlantahumane.org/>)
- Humane Society of Greater Savannah (www.humanesocietysav.org)

Georgians can learn more about fostering or adopting these animals on our rescue partner's websites and social media pages.

Staff reports in the Market Bulletin are submitted by outside organizations concerning agricultural-related topics in Georgia. A submission does not guarantee publication. The editor retains the right to accept and edit submitted articles. Submissions can be sent to marketbulletin@agr.georgia.gov

BEES, HONEY AND SUPPLIES

Order package bees now for March availability. Pickup in Butts or Cherokee counties. Gentle and well mated. Quantity disc. Classes starting Jan. 16, 2025 B.J. Weeks weeksworks@gmail.com

Remove honey bees from a structure for a fee, licensed and insured; remove a swarm for free. Also, wanted bee equipment. Leonard Day **Macon** 478-719-5588

AQUACULTURE AND SUPPLIES

Advertisers selling sterile triploid grass carp must submit a current Wild Animal License from the Georgia Department of Natural Resources. Ads without this license will not be published. Entities producing and selling or reselling domestic fish in Georgia are required to obtain a free Aquaculture Registration Permit. For more information on aquaculture rules and licensing in Georgia, including a listing of domestic fish and other fish species requiring a Wild Animal License, visit <https://georgiawildlife.com/aquaculture> or call 770.761.3044.

10-12in sterile carp, bluegill, Oxbow F1 bass (fast growing, limited supply, excellent genetics), Shellcracker, Catfish, pond lime, Crappie, Shiners, Minnows, & Fish Feed (Edge's Fish Smack). Keith Edge **Soperton** 478-697-8994

3-12inch+ grass carp, large-mouth/bass, threadfin/shad, coppernose/bluegill, shellcracker, other species when available, pvc holding/catfish cages. inquire about our unique genetics and "live" delivery guarantee. David Beall **Greenville** 706-289-1874

All sizes - Bass, Bluegill, Channel Catfish, Threadfin, Gizzard Shad, Shellcracker and more. Free delivery or pickup. Danny Austin **Roberta** 478-391-9068

Bass, bluegill, hybrid bream, shellcracker, sterile grass carp, channel catfish, koi. Lake management. David Cochran **Ellijay** 706-889-8113

Grass carp, Bluegill, Threadfin shad, Crappie and Shellcracker. Delivery available at: \$2.50/mile, one way. Brian Simmons **Hawkinsville** 478-892-3144

Koi and Goldfish for sale; also fish food and supplies. Glenn Kicklighter **Sandersville** 478-232-7704

Townsend commercial catfish skinner: \$5000 firm. Ladon Tucker **Chula** 229-426-9052

FEED, HAY AND GRAIN

2024 Alicia hay, fertilized, horse quality: \$8 per square bale. Jim Grant **Elko** 478-217-0626

2024 Bermuda cow and horse hay, sheltered and unsheltered, 4x5 net wrapped bales: \$60 to \$80 a bale. Some delivery available for a fee. Mike Holiday **Pitts** 229-938-8656

2024 Bermuda mixed 4x5 rolls for sale, fertilized, barn-stored, rain-free: \$60/ea. William Bailey **Bartow** 478-364-3461

2024 Cheyenne II Bermuda large square bales: \$6/ea; 4x5 net-wrapped rolls for cows: \$60/ea. Pickup only. William Chambers **Fayette County** 678-409-0704

2024 Coastal mix hay, 4X5 net wrapped rolls. Dry in shelter: \$60/roll. Carlin & Amanda Hodges **Musella** 478-951-1821 404-557-8978

2024 fescue/clover mix hay available. Square bales: \$8/ea; 4x4 round bales: \$60/ea; 4x5 round bales: \$70/ea. Robert Steele **Zebulon** 770-468-6425

2024 Fescue/clover mix, horse-quality, fertilized, weed & rain-free, barn-stored. 4x5, round bales, net-wrapped: \$60/ea; square bales: \$7/ea. Ron Teems **Kingston** 770-715-1368

2024 mixed feed hay: \$60 per bale, \$50 if more than 10 purchased. Under shelter. Carl McKnight **Senoia** 770-328-6810

2024 High protein UGA tested hay for sale - barn-stored rd/sq Alicia & Russell Bermuda grass. Delivery available. Heath Pittman **Vidalia** 912-293-2535 or 912-537-9721

2024 premium Tift44 Bermuda, horse quality, fertilized, weed free, 4x5 roll barn stored: \$100. Tim Hunter **Conyers** 770-331-7749 or 770-483-8712

2024 Russell & Alicia Bermudagrass, 4x5, fertilized, net-wrapped. In-barn: \$75-\$85/roll; tarped on pallets: \$60-70/roll (Quantity discounts available); squares: \$8/bale. Delivery negotiable. VM/text. W. Pruitt **Statesboro** 912-682-4481

2024 Russell Bermuda fertilized, 4x5 rolls: \$60/bale. George Temples **Mauk** 678-591-4916

2024 sheltered cow peanut hay, 4x5 net wrapped bales: \$65 a bale. Some delivery available for a fee. Mike Holiday **Pitts** 229-938-8656

2024 Sheltered Peanut Hay: \$55 per roll at barn. Delivery available. Call Glenn Brinson **Tarrytown** 912-288-5960

2024 square bales, Coastal Bermuda or Tift85, fertilized, weed-free, UGA inspected, RFQ 99: \$8/square. 1500 squares available, discounts on 100+. Pierce **Screven Co** 912-659-9726 or mack-pierce61@comcast.net

2024 square bales, fertilized, barn stored. Horse hay: \$10 per bale; Cow hay: \$6 per bale. Fran Masters **Buford** 770-945-6433

4x5 net-wrapped fescue and clover. Barn kept, rain-free: \$75 per roll. Free delivery available for fee. Tim Garmon **Jefferson** 706-367-4775

4x5.5 net-wrapped John Deere rolls inside and outside stored. Prices vary. Delivery available for mileage. Josh Pennino **Sparta** 706-340-3146

Alfalfa hay, highest quality, UGA tested, 65lb square bales: \$14/ea, also round rolls available; Lespedeza square bales: \$12/ea, 10 bale min. Andy Adams **Hartwell** 706-376-8968

Bahia hay, 4X5, net-wrapped, fertilized and sheltered: \$55/ea. Michael Powell **Pearson** 912-422-8299

For sale - Fescue Bermuda hay. Fertilized, sprayed, rain free: \$6/bale. William Cargle **Rome** 706-235-1226

Bermuda, mixed hay. Fertilized and rain free, horse quality: \$10/square; \$80/round; also cattle hay: \$50/round. Net wrapped in barn. Large quantity delivery available. S. Stana **Carrollton** 770-241-3201

Bermuda/Bahia grass, mixed, net-wrapped, horse quality, can deliver. Inside: \$60; outside: \$45. Coy Baker **Loganville** 770-466-4609

2025-2026 MARKET BULLETIN ADVERTISING DEADLINES

| REQUESTED PUBLICATION | ADVERTISING DEADLINE |
|-------------------------------|----------------------------|
| Wednesday, January 08, 2025 | Friday, December 27, 2024 |
| Wednesday, January 22, 2025 | Friday, January 10, 2025 |
| Wednesday, February 05, 2025 | Friday, January 24, 2025 |
| Wednesday, February 19, 2025 | Friday, February 07, 2025 |
| Wednesday, March 05, 2025 | Friday, February 21, 2025 |
| Wednesday, March 19, 2025 | Friday, March 07, 2025 |
| Wednesday, April 02, 2025 | Friday, March 21, 2025 |
| Wednesday, April 16, 2025 | Friday, April 04, 2025 |
| Wednesday, April 30, 2025 | Friday, April 18, 2025 |
| Wednesday, May 14, 2025 | Friday, May 02, 2025 |
| Wednesday, May 28, 2025 | Friday, May 16, 2025 |
| Wednesday, June 11, 2025 | Friday, May 30, 2025 |
| Wednesday, June 25, 2025 | Friday, June 13, 2025 |
| Wednesday, July 09, 2025 | Friday, June 27, 2025 |
| Wednesday, July 23, 2025 | Friday, July 11, 2025 |
| Wednesday, August 06, 2025 | Friday, July 25, 2025 |
| Wednesday, August 20, 2025 | Friday, August 08, 2025 |
| Wednesday, September 03, 2025 | Friday, August 22, 2025 |
| Wednesday, September 17, 2025 | Friday, September 05, 2025 |
| Wednesday, October 01, 2025 | Friday, September 19, 2025 |
| Wednesday, October 15, 2025 | Friday, October 03, 2025 |
| Wednesday, October 29, 2025 | Friday, October 17, 2025 |
| Wednesday, November 12, 2025 | Friday, October 31, 2025 |
| Wednesday, November 26, 2025 | Friday, November 14, 2025 |
| Wednesday, December 10, 2025 | Friday, November 28, 2025 |
| Wednesday, December 24, 2025 | Friday, December 12, 2025 |
| Wednesday, January 07, 2026 | Friday, December 26, 2025 |

*If ad due date falls on a holiday, please submit on the first available business day before the holiday.
Call 404-656-3722 with questions.*

Biosecurity is a Team Effort

Backyard and Exhibition Growers

Veterinarians

Industry Growers and Workers

Government Agencies

USDA

Let's keep our poultry healthy together
#DefendTheFlock
aphis.usda.gov/animalhealth/defendtheflock

DEFEND THE FLOCK
BIOSECURITY

FEED, HAY AND GRAIN

Fescue, clover, hay. Weed-free, fertilized, rain-free, 4x5 rolls net wrapped. Excellent quality: \$60 for inside, \$40 for outside. H.L. Porter Martin 706-716-4040

Hay for sale, net-wrapped Tift, X5: \$50/ea. Call or text. Stoney Layfield **Tifton/Odum** 229-848-0092

Hay for sale. 150 bales, cut in 2024: \$67 per bale. Located in Putnam County, Ga. Dwain Sammons **Sandersville** 478-232-1217

Horse quality Bermuda hay, square and 4x5 round bales available. Call for pricing. Taylor Catalano **Toccoa** 706-391-3560

Large quantity round and square Bermuda hay. Round wrapped peanut hay. Jonny Harris **Odum** 912-294-2470

MULCH AND FERTILIZERS

2024 Fall mixed grasses (mostly Fescue), firm full squares, no rain: \$4.00 at barn. John Petrel **Walker County** 706-313-6628

2024 Wheat Straw: \$4 per bale at barn. Delivery available. Call Gary Brinson **Tarrytown** 912-286-3191

50lbs alfalfa compost no weed seeds, greenhouse, antique grain scale misc horse tack. Call or text. Mary Clark **Newborn** 770-919-7759

Mulch hay, square bales, delivery possible. Janie Willis **Dahlonega** 706-867-5177

PLANTS, TREES AND FLOWERS

Advertisements selling officially protected plants must include a permit to sell such plants. Ads submitted without this permit will not be published. For information on the sale or shipment of protected plants, visit www.fws.org/Endangered/permits/index.html or call the U.S. Fish and Wildlife Service, 404.679.7097. For questions about ginseng, visit <https://www.fws.gov/Endangered/permits/index.html> or call the U.S. Fish and Wildlife Service, 404.679.7097.

2025 Georgia Belle peach trees: \$15 w/instructions; eatable fruit banana trees: \$15; muscadine: \$15; Sago palms: \$15; Luffa sponge w/seed: \$10. Whispering Pines Farm. Davis Yaun **Soperton** aikenyaun@gmail.com 678-283-7592

Most 1-gallon plants: \$8/ea; 3gal: \$24/ea. Camellias, azaleas, ferns, angel trumpets, hydrangeas, palms, Japanese maples, fruit trees, blueberries, irrigated flax, lemon grass. 9 miles South of Columbus. Doug **Seale, AL** 678-618-0352

Pachysandra ground cover: 50 bare-root plants for \$12. I have a large supply. Evergreen, hardy, shade loving, deer, rabbit resistant and doesn't climb. Call for video. Carol Olson **Marietta** 770-490-5685



Privacy Trees, Leyland Cypress, Thuja Green Giant. We deliver direct from our farm to your property. 12 Years serving GA. John Cowherd **Monticello** 770-862-7442

Sawtooth oaks, Japanese maples (grafted and seedlings), Dwarf Youpon Holly, Azalea (multiple varieties), Chinese chestnut trees, white oaks, Gardenias. Mark Crosby **Wrightsville** 478-455-2981

Thornless blackberries, beautyberries, burning bushes: \$4/ea; Nandinas, forsythia, crate myrtle, red hot pokers, crocosmias, arum: \$3/ea; variegated monkey grass: free. Other native plants available. Linda **Calhoun** 470-398-9863

Variegated liriopse & mondo grass, 1gal pots: \$2/each; nandina, 1gal pots: \$5/ea; Ginkgo trees, 1gal pots: \$10/each. K. Patman **Athens** 706-549-4487

SEEDS

Advertisements selling seeds must include a current state laboratory report (fewer than nine months old) for purity, noxious weeds and germination for each seed lot advertised. Ads submitted without this information will not be published. For more information regarding certified seed, call the GDA Seed Division, 229.386.3557.

2024 Ageratum Mist Flower or Rose Champion. 25+ seeds: \$3 (cash) + SASE D. Miltimore 1766 Pleasant Hill Rd, NE **Ranger GA** 30734

Old time yellow cayenne hot pepper, 150-year heirloom: 30+ seed \$5 +SASE. H. Anthony 567 Bennett Cemetery Rd, **Jefferson, Ga.** 30549 706-605-0201

Peter Pepper, Cayenne, Chili, Ghost, Poblano, Galaxy Red hot pepper seed: \$3/10 seeds w/self addressed stamped envelope. Edward Patten **Sylvester** 229-881-1674

TIMBER

Timber must be individually owned and produced by the advertiser on his or her personal property. No companies or businesses are permitted to advertise timberland in this Category. Timberland advertised must be at least one acre. Timber wanted ads will not be published.

Cedar logs, cut 18in: free (good for making kindling); also 2 cedar tree trunks/posts (approx. 10ft): \$10/ea. Please leave message. L. Elliott **Conyers** 770-597-9269

FIREWOOD

Firewood must be cut from the advertiser's personal property. Ads for firewood must use the cord when specifying the amount of firewood for sale.

Firewood for sale. Larry Smith **Gordon** 478-361-9967

Firewood for sale. You pick up or delivery possible depending on location. Free fat wood with purchase of truck load. Call for pricing. Clayton Brooks **Monroe** 678-938-9376

Oak firewood for sale: \$250/cord. Other quantities available. Deliveries additional. Don Gilbert **Baxley** 912-339-2817



Premium firewood: \$2999 per cord. White and red oak, dry seasoned minimum 2 years. Large quantities only. Ideal for restaurant use. Call or text. Justin **Demorest** 706-949-0295

Seasoned firewood, good wood. 1 cord: \$300; 1/2 cord: \$175. Oak, all hardwood. Steven McAbee **Elijay** 762-543-1228

Seasoned or green oak and hickory: \$100/half cord; \$200/full cord. Delivery available. Jeremy Wood **Carlton** 864-526-9228

Seasoned or green oak firewood, 1/2 cord: \$125. Truckload or any quantity available. Delivery available. Text/call. Larry Moore **Grantville** 678-278-5709

Seasoned split firewood, all hardwood, different sizes available. Half cord: \$120 including local delivery and stacking. Will deliver further at extra charge. Ron Teams **Cartersville** 770-715-1368

THINGS TO EAT

Advertisers producing and offering for sale shell eggs at retail to the end consumer must obtain an egg candling certificate from the Georgia Department of Agriculture. The department offers training in egg candling. Email candling@agr.georgia.gov or call 404.656.3627 for more information.

2024 pecans for sale. Ready for freezer: \$11 per lb. plus shipping. Peggy Griffin **Clarkesville** 706-768-8417

2024 Desirable pecans ready to eat \$13 per pound+postage. Will machine crack, shell, separate your whole pecans: \$.75-cents per pound. Russell Eaton **Stockbridge** 770-506-2727

2024 Paper Shell pecans, medium size: \$2.00/lb packed in 10lb & 25lb bags. CJ Orchards **Rutledge** 706-318-9462

2024 shelled Elliott pecans, ready to eat-bake-freeze-enjoy: \$12/lb. +shipping. Call/text Mark Parker 229-726-4238 Tressie Parker 229-400-3304 **Moultrie** Facebook: Parker Pecans

Farm fresh duck eggs: \$8/dozen; farm fresh chicken eggs: \$4/dozen. Call or text. Danielle **Covington** 770-891-1912

Farm fresh eggs, cage-free, all natural: \$5 per dozen. Harriet Chaney **Lithonia** 404-290-1122

Registered high-end Angus beef: \$4.80 LB hanging weight. Can deliver to your butcher. Circa 1000LB Live Wt. Good marbling and tender. 90-day finish. Rich Miller **Monticello** 706-476-1323

Water-ground meal, whole wheat flour & grits: \$5/5lbs + postage. Will grind your grain. Mike Buckner **Junction City GA** 706-269-3630



RE:GENERATIONS & SOIL HEALTH

Field Day

OVERVIEW OF SOIL HEALTH PRACTICES & OPPORTUNITIES IN PEANUT PRODUCTION

FEBRUARY 12TH, 2025

MCLENDON ACRES, INC HANGAR

1206 GA HWY 234 LEARY, GA

10 A.M. - 1 P.M. | LUNCH WILL BE PROVIDED

REGISTER BY FEBRUARY 5TH AT

FLINTRIVERSWCD.ORG/EVENTS OR CALL

229-849-2415 EXT: 101



Struggling to Find Reliable Internet?

Lightning-fast fiber internet from Conexon Connect is now available in more places than ever. See if we are in your area today!

844-542-6663 ConexonConnect.com



FARM SERVICES

Coyote & hog control, day or night, fully suppressed, thermal scopes: free. Servicing all of GA. Very experienced. Zeb Brown **Dallas** 678-873-6234

Custom pasture tree clearing. Build laser-graded or re-freshing horse arenas. Driveways built, regraded, re-graded. Demo houses/barns w/property clean. Barns/house pads graded, horse paddocks, drainage correction, trackhoe, trucking. Insured. Bill **Braselton** 770-231-4662

Down tree removal. Fair prices, fully insured, within 50 miles radius. Chuck Daly **Augusta** 706-564-4383

Electric fence charger repair. Wilfred Milam 8001 S Giles Rd **Douglasville** GA 30135 770-942-4672

Equipping growers/gardeners w/premium tools & supplies for flowers/veggies, from professional-grade greenhouses to durable seed-starting trays. We help you thrive. Grow smarter with Blessings Grow Meadows, Robin **Metter** 762-212-0943 www.Blessings-GrowMeadows.com

Farm 911@ Signs – farm safety and emergency signage. An information source for greater peace of mind. Website: www.farm911signs.com Daren Sue Truex **Cumming** 678-628-6767

Fence builder in Northeast Georgia. All types of farm fencing, NRCS fences and drinkers, pipe fences, corrals. Kevin McClure **Cleveland** 770-527-6943

I remove unwanted construction and farming equipment. I haul equipment. I buy some equipment. I clean up property. Skid steer, dump trailers available. Fast, dependable service. Troy Wilson **Stockbridge** 470-449-1360

Lakes/ponds built, repaired, new pipe systems, and clearing, swamps drained, creeks rerouted, drainage problems wetlands restoration, bush hogging home sites. Tim Harper **Peachtree City** 770-527-1565

Lawnmower repair and pick-up and delivery, riders and push mowers. Terry Mikle **Snellville** 770-979-8981

Loader/backhoe, grading, bush hogging, aeration, tree cutting, branch trimming, pruning, lawn mowing, leaf mulching, chain saw & blade sharpening. Rockdale and surrounding counties. G. Kelecheck **Conyers** 770-597-4878

Mobile professional horse training, 30+ years experience. Working initiate colts, horse behavior issues, etc; also hauling horses or horse transportation. For more info, call. AM Horsemanship **Atlanta** 678-308-4002

Mobile welding service – all types of welding, certified, 45 years of experience. Call for details. Within 60mi. Campbell's Welding, Randy Campbell **Griffin** 678-603-0175

Russell Bermuda sprigging service – no till or plant by plow. Perfect for livestock including cattle & horses. Call us to learn more today. Covering all of Northeast Georgia. Taylor Catalano **Toccoa** 706-391-3560

Stumps ground neatly below ground level, free estimate and reasonably priced. Glen Whitley **Bethlehem** 770-307-7098



State wide brush cutting. Underbrush clearing, small tree clearing, brush cleanup, bush hogging, property and fence lines, overgrown areas. Thomas Bowlin 678-972-4647

Stump removal service w/stump grinder, 17 years of experience, insured. Reasonably priced, free estimates. Serving areas within 55mi radius of Cartersville. Ron Teems **Kingston** 770-715-1368

EMPLOYMENT

Farm Help Needed and Seeking Farm Employment ads must be related to agricultural farm work. Ads submitted for domestic help, companions, baby sitters, housekeepers, etc. will not be published.

FARM HELP NEEDED

Help with general maintenance, fences, tractor, cattle. Salary with furnished apartment. Background check. Leonard Draper **Cedartown** 770-748-2042

Honest, mature person to manage property and equipment. Salary based on experience. 1BR furnished house included. Drug and background check required. Good driving record. No pets. Lisa Simmons **Conyers** 770-605-6107

Immediate opening for Spanish-speaking male or couple needed to work on bird farm. Live-in position, 4hr/day, 5 days/week: \$250/weekly inc. small apartment. Serious inquiries only. Tere Lopez **Oxford** 770-787-2955

Seeking reliable person for placing quail and pheasants for field hunts, feeding of the birds and general duties. Etowah Valley Game Reserve, Alex **Dawsonville** 678-410-0983

SEEKING FARM EMPLOYMENT

Responsible adult male looking for local farm work. Years of experience in tractor work, bush hogging, carpentry & fencing. Michael Martin **Thomaston** 678-552-3607

WANTED

Items wanted in all Classified Categories will be advertised here.

Burlap tobacco sheets, in good condition. Vick Murphy **Moultrie** 229-891-5616

Companion pony wanted for small 12 hand gelding. **Roberta** 478-332-9911

Free house must be moved or torn down for materials. Larry Stewart **Danielsville** 706-789-3771

I need rabbits. If you have any that need a home, call me. Mike Stillo **Bishop** 404-392-2349

I would like to purchase white and pink Angel Trumpet cuttings. Inez Smith **Gainesville** 770-536-8393

Looking for a Richard Kelly hen and cock for sale. Terry **Riverdale** 478-390-2847 or 770-210-0475

In search of old homes or vacant, idle land in the west Georgia area to buy, if interested in selling. Cody Barnett **Bremen** 678-315-7946

ISO free goat shed or barn large enough for two goats, but small enough to relocate. Wooden structure preferred. Please call. Birgit Bolton **Atlanta** 404-783-2045

ISO Stihl 028WB chainsaw for retired chainsaw mechanic for upcoming projects. Text or leave message. Randy Vowell **LaGrange** 706-302-8573

Law abiding, Christian, Augusta family (Pop, son, grandson) searching for private property in Burke, Jenkins, or Screven counties to spend quality time hunting together. Mike O'Meara **Augusta** 706-833-2762

Looking for info and seed if possible for the "Worthmore" pea developed 1976 by UGA plant pathologist Dr. Danny Gay in Tifton. Emory Bryan **Tulsa, OK** 918-636-3184 emory.bryan@cox.net

Looking to purchase a young Rhode Island Red rooster or young yellow Buffington. N. Grovner **Darien** 912-577-2072 or ngrovner01@comcast.com

Need 1 purebred Duroc gilt piglet within 40 miles of Athens, GA. Will pay \$150. Please call Beau. **Winder** 404-274-4448.

Need 2 Ford 3000 13.6 x 28 used but good tires, with rims preferred. Ray Lunsford **Bu-ford** 678-410-6244

Need a windmill 27ft or 30ft. will take down and cleanup. Call or text with price. Thanks. Mike King **Cherry Log** 706-889-3170

Rotary tiller, 5-foot, offset, 3-point hitch, Good condition. Nick Lacey **Ray City** 229-455-3204

Small 2 BR 1 bath house (or close to that) out in the country for a single person retired age in good health. Mike Rochelle **Resaca** 706-934-5836 or rochellemike@hotmail.com

The gentleman who call the person looking for a 6ft boom mower, please call him again. John Gunn **Reynolds** 478-391-0330

Want Case 580D and 580E parts or rebuildable. John Bruce **Madison** 706-342-5543

Want Farmall Cub or Cub Lo-Boy tractor for parts or repair. Thomas Tucker **Lithia Springs** 770-941-2354

Want sheep foot roller. Fred Suggs **Greenville, SC** 864-270-1610

LIVESTOCK QUOTATIONS

Average prices for January 2025 at Georgia Auction Markets, Georgia Department of Agriculture an U.S.D.A. Cooperative Federal-State Livestock Market News and Grading Service. For daily quotations, call (229) 226-1641 (7:30 a.m. - 4:30 p.m.)

(Cattle prices expressed in price/hundredweight)



SLAUGHTER CLASSES AVERAGES

COWS:
Breakers 75-80% lean..... 129.76
Boners 80-85% Lean 132.33
Lean 85-90% Lean 113.48

BULLS:
Yield Grade 1
1000-2100 lbs..... 154.85

FEEDER CLASSES: WEIGHTED AVG PRICES

STEERS: MEDIUM AND LARGE

| | 1 | 2 |
|------------------|--------|--------|
| 300-350 lbs..... | 417.38 | 389.73 |
| 350-400 lbs..... | 392.71 | 374.47 |
| 400-450 lbs..... | 363.23 | 344.22 |
| 450-500 lbs..... | 339.00 | 322.27 |
| 500-550 lbs..... | 322.22 | 307.22 |
| 550-600 lbs..... | 300.76 | 288.78 |
| 600-650 lbs..... | 293.74 | 277.60 |
| 650-700 lbs..... | 266.96 | 258.82 |

HEIFERS: MEDIUM AND LARGE

| | 1 | 2 |
|------------------|--------|--------|
| 300-350 lbs..... | 344.34 | 327.96 |
| 350-400 lbs..... | 329.49 | 310.98 |
| 400-450 lbs..... | 311.98 | 295.09 |
| 450-500 lbs..... | 287.42 | 276.23 |
| 500-550 lbs..... | 280.15 | 266.31 |
| 550-600 lbs..... | 268.78 | 250.48 |
| 600-650 lbs..... | 251.42 | 230.94 |
| 650-700 lbs..... | 247.55 | 233.93 |

Producers can obtain daily cattle prices by Internet at the following website: <http://www.ams.usda.gov>
Once at the site, select Market News and Transportation Data in the left column. Click on Livestock, Meats, Grain and Hay under the heading Market News Reports by Program. Next, click on Cattle under the heading Browse by Commodity. Then click on Feeder and Replacement Cattle Auctions and select Georgia.

BULLS: MEDIUM AND LARGE

| | 1 | 2 |
|------------------|--------|--------|
| 300-350 lbs..... | 408.99 | 391.14 |
| 350-400 lbs..... | 384.53 | 373.64 |
| 400-450 lbs..... | 372.21 | 343.87 |
| 450-500 lbs..... | 318.44 | 307.78 |
| 500-550 lbs..... | 305.33 | 287.78 |
| 550-600 lbs..... | 288.12 | 270.15 |
| 600-650 lbs..... | 266.01 | 245.62 |
| 650-700 lbs..... | 254.95 | 234.13 |

GOATS (priced per head) SLAUGHTER CLASSES SELECTION 2 ACTUAL WEIGHT BILLIES/BUCKS

| | |
|-----------------------------|-----|
| 70-75 lbs..... | n/a |
| 80-85 lbs..... | n/a |
| 90-95 lbs..... | n/a |
| 100-145 lbs..... | n/a |
| 150-180 lbs..... | n/a |
| NANNIES/DOES | |
| 60-65 lbs..... | n/a |
| 70-75 lbs..... | n/a |
| 80-85 lbs..... | n/a |
| 90-95 lbs..... | n/a |
| 100-130 lbs..... | n/a |
| KIDS & YEARLINGS | |
| 20-25 lbs..... | n/a |
| 30-35 lbs..... | n/a |
| 40-45 lbs..... | n/a |
| 50-55 lbs..... | n/a |
| 60-65 lbs..... | n/a |
| 70-75 lbs..... | n/a |

Want to buy Super Major Fordson for parts. Michael Richardson **Elberton** 706-283-7134

Want to lease pasture for cattle in or near Oglethorpe County. Tim Rodgers **Lexington** trodgers@hotmail.com or 706-474-2427

Wanted - EverRide lawnmower deck 48in or 60in in good condition or will take whole mower as long as deck is in good condition. Charles **Dear-ing** 706-699-2860

Wanted in NE Ga (Athens Area) non running, or non wanted riding mowers for parts or repair. Am retired keeps me busy. David Combs **Jefferson** 706-367-4107

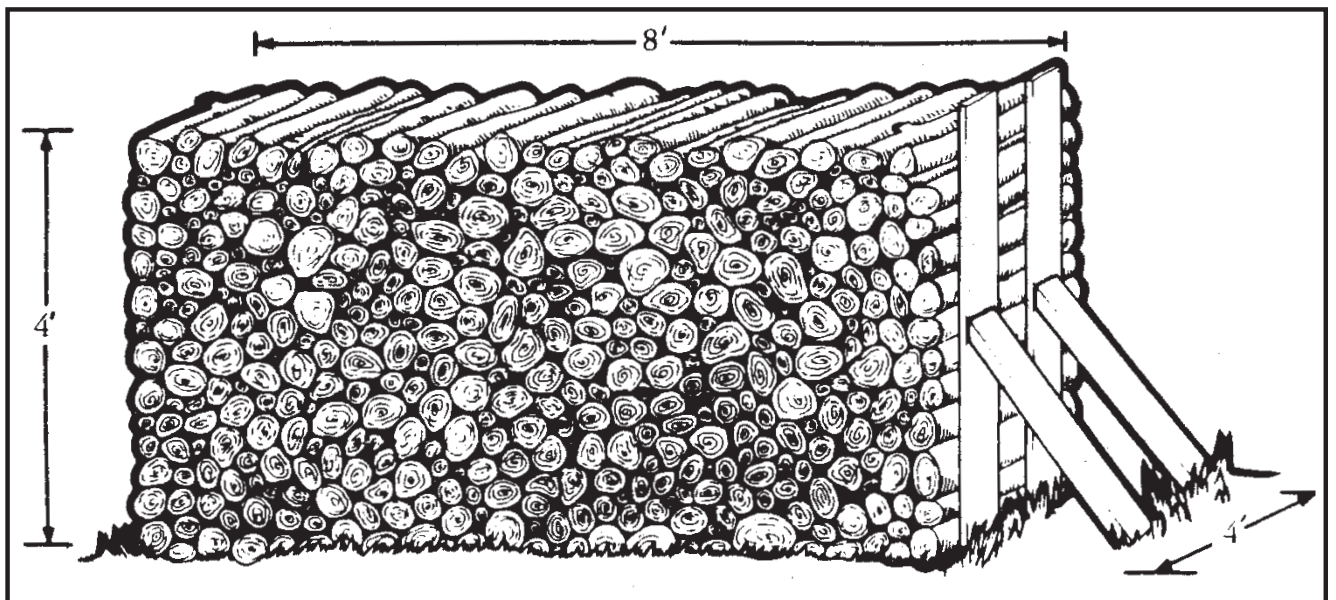
Wanted lift type drag harrow w/spikes in NE GA area. W. Simmons **Toccoa** 706-244-9681

Wanted. 6 metal sheets, 3ftx12ft. Prefer North GA location. Roy Bruce **Marble Hill** 678-925-7660

Wanted: seeking a location to place 5 honey bee hives in exchange for pollination and fresh honey. Areas include Lowndes, Lanier, Cook, or Brooks Counties. T. Bennett **Hahira** 229-412 5924

Wanted: Troy Bilt Horse tiller in running condition or for parts. Tom Whitten **Ellaville** 229-942-8262

Wanted: Two tractor tires, size 10-24, and two tractor tires, size 12.4x28. Gary Moncrief **Roberta** 478-672-7511



A cord is defined as 128 cubic feet of wood stacked by the line or row in a compact manner with individual pieces touching; it can be four feet high, four feet wide (deep), and eight feet long, or any combination of these measurements (height, width and length) that yields 128 cubic feet.

AVIAN FLU: Quick action taken to contain recent HPAI outbreaks; food supply remains safe

Continued From Page 1

fuel its success,” Georgia Agriculture Commissioner Tyler Harper said, noting the event took place during the Martin Luther King Jr holiday weekend.

In response to the outbreak, State Veterinarian Janemarie Hennebelle suspended all poultry exhibitions, shows, swaps, meets, and sales (flea markets, auction markets) in the state of Georgia until further notice.

The suspension does not apply to the retail sale of poultry products in Georgia, and there will be no impact on retailers’ ability to offer poultry products like meat and eggs for commercial sales. The suspension does not apply to production facilities in Georgia, nor does it apply to private treaty sales between individuals. Additionally, birds may continue to be shipped into Georgia following routine entry requirements, which can be found in the official code of Georgia, O.C.G.A, Rule 40-13-2-.15 pertaining to interstate movement health requirements for poultry.

Harper and others in the poultry industry sought to reassure the public that poultry products in Georgia stores are safe.

“Every Georgian can and should have 100 percent confidence in the safety and security of poultry products offered for sale in the state of Georgia,” Harper said. “The recent detection of HPAI in commercial poultry flocks in Elbert County will not impact Georgians’ ability to purchase poultry products like meat or eggs at

the local grocery store or restaurant nor will it impact retailers’ ability to offer these products for sale.”

Mike Giles, president of the Georgia Poultry Federation, said measures are in place to ensure chicken from an infected farm never lands on anyone’s plate.

“Before poultry is processed for human consumption, samples from each flock are collected, and no food products are allowed into the supply chain for human consumption without first receiving test results demonstrating that the flocks are healthy and safe for consumption,” Giles said in a statement released to the Georgia Recorder.




Before the positive cases in Elbert County, HPAI had only affected Georgia backyard flocks since the ongoing nationwide outbreak began in February 2022. Four cases were confirmed, including a small flock of chickens and ducks in Clayton County the week before the Elbert County cases.

Broilers represent Georgia’s top commodity. In 2023, broilers had a farm gate value of \$5.8 billion, representing one-third of Georgia’s total agricultural commodities.

Owners of poultry flocks are strongly encouraged to closely observe their birds and report a sudden increase in the number of sick birds or bird deaths to the Avian Influenza Hotline at 770-766-6850. More information is available on the GDA website.



Suspension of Poultry Activities

| Permitted | Suspended |
|--|---|
|  Private treaty sales between two individuals on private property |  Sales of live birds at an auction market, flea market, or other livestock market |
|  Retail sales of poultry products like meat and eggs at grocery stores, convenience stores, markets and restaurants |  All gatherings including exhibitions, meet ups, swaps, and shows featuring live birds |
|  Importation of live birds or hatching eggs into Georgia in compliance with routine entry requirements | |
|  Poultry Processing Operations | |

Following the HPAI cases in Elbert County, the Georgia Department of Agriculture announced a suspension of poultry activities in the state until further notice. (GDA/Special Graphic)

ATLANTA MARKET: Tour showcases learning opportunities in larger market for Georgia businesses

Continued From Page 1

products. Tour participants were Georgia Grown members or partner businesses with the Georgia Grown Innovation Center in Metter and the Georgia Tech Manufacturing Extension.

“There’s a million places you can go with your products, so for anyone interested in even thinking about this side of the business, it’s a great way for them to walk and then to see a variety of things,” Sutherland said. “You can see how people do packaging and if your packaging is up to snuff or could draw attention. You can see 12 other products like yours and see what you can do to make it stand out. You can look at how someone sets up their booth or where people invest their time and money.”

Sisters Sheila Tiller-Tooks and Toshia Tiller own Cornbread Sisters and specialize in buttermilk cornbread products, dry mixes, packaged muffins, and loaves. They started the business two years ago and have their products in local stores in the Atlanta area. Shelia said they took the Atlanta Market tour to learn what they can do better with their products.

“I’ve always thought (the Atlanta Market) had something to do with home things for the home or garden products. I never thought it would have had anything to do with food products, so I was really excited to get here today and see all of the exhibits with food products,” Shelia said.

“I’ve learned a lot just looking. We’re looking at a lot of product labels and thinking about designing our products and developing designs and things like that. We have also looked at what spaces were getting a lot of foot traffic.”

The tour participants also talked with Georgia Grown members who were selling their products at the market. David Goodson of Goodson Pecans came to the Atlanta Market in 2016 through Georgia Grown’s Domestic Marketing Program. This cost-sharing effort allows Georgia-based businesses to partner with the Georgia Department of Agriculture’s Georgia Grown marketing brand at national trade shows.

Goodson said he worked with about four square feet of booth space that first year. “It was tiny, and we had a lot of products, but that was my first entry into it,” he said.

Goodson now has his booth space, a corner spot at the end of an aisle. As Goodson talked with the group, his wife, Melody, handed out samples of their pecans to passersby. Occasionally, Melody would pull out a paper form to take an order from someone.

Goodson provided advice on the basics – packaging, booth space and approach. “They can look at our booth and see we’ve got a great setup. I don’t say that pridefully. It’s just



These small business owners from across Georgia walked the floors of the Atlanta Market last month to see what they can learn to improve their products and determine if they can expand their distribution. Tour participants were Georgia Grown members or partner businesses with the Georgia Grown Innovation Center in Metter and the Georgia Tech Manufacturing Extension. (GDA/Jay Jones)

what we’ve learned over the years, and we work with some great folks who have helped us do a really good job with promoting our product and stuff.”

Goodson added that the atmosphere at the Atlanta Market is very different from that of a retail market, like a local farmers’ market or fair. “You want something that’s going to draw people. This is a tough market.

“You may think your product’s great, and you may sell a bunch of product at retail shows, but that doesn’t mean you’re going to sell as much product here because you’re dealing with buyers,” Goodson said. “There are so many people around who have food products, so you’re one of many. You’ve really got to do something to get out in front of the customer.”

Sutherland said tours like the one held at the Atlanta Mar-

ket can help those who may not think they are ready for a larger audience.

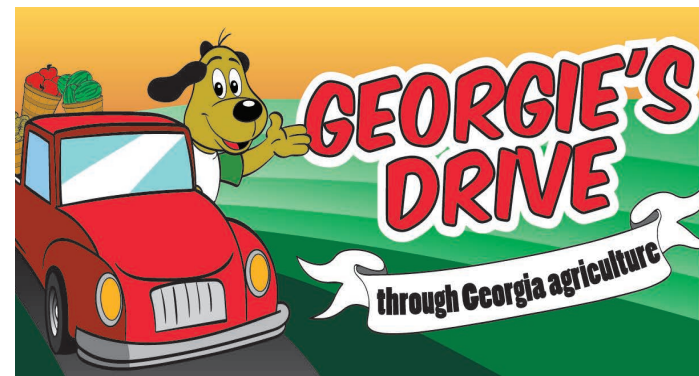
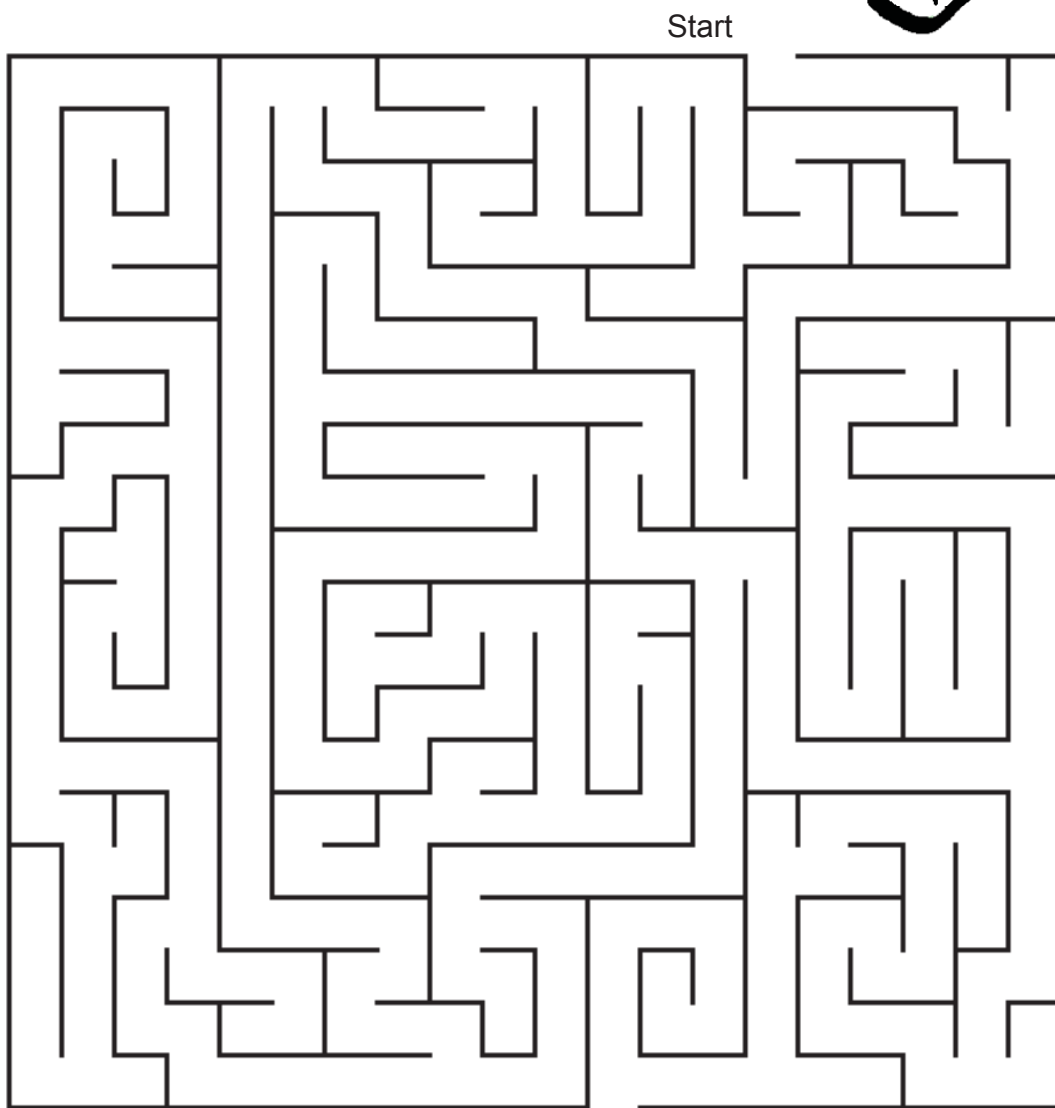
“I think this tour exposes people. It confirms things. It may tell you you should run in another direction. It also may say, ‘Oh, I’m not there yet, but I want to be there,’” she said. “It also helps you realize there are a lot of Georgia Grown groups, partners, and brands that want to offer you support.”

Georgia Grown’s Domestic Marketing Program offers opportunities to 11 tradeshows annually. Applications for participation in the Domestic Marketing Program for 2026 will be accepted beginning on Aug. 1 and due by Oct. 1. For more information, contact Sarah Cook at sarah.cook@agr.georgia.gov or Elizabeth Danforth at elizabeth.danforth@agr.georgia.gov. Learn more about Georgia Grown by visiting www.georgiagrown.com.

Fun on the Farm!

An acre of activities for young people.

Can you help broccoli find his way to the market?



Georgie Drive to the wild chickens of Fitzgerald

Editor's note: Georgie continues his travels this month and was unable to file a story, but he promised to send us a new one for the next issue. Until then, here is one of our favorite Georgie's Drives from March 14, 2018.

Hello! I'm Georgie, the Georgia Grown mascot. I travel the state promoting our No. 1 industry — agriculture. With an annual production value of over \$5 billion, poultry is by far our No. 1 commodity. Georgia farms produce 29 million pounds of meat and almost seven million eggs every single day. But one city in South Georgia is famous for wild chickens – Burmese junglefowl, to be exact.

Fitzgerald is located south of the Ocmulgee River in Ben Hill County. Back in the 1960s, the Georgia Department of Natural Resources released a pile of these junglefowl along the river near Bowen's Mill, hoping that they would reproduce enough to become another game bird species for hunters in South Georgia to enjoy. I reckon the birds got tired of living the country life pretty quick 'cause they all packed up and moved to Fitzgerald. Not everybody likes these birds, though. Would you believe the city council considered having them removed a few years ago?

I've been chasing chickens almost as long as I've been chasing my tail, so I'm sure glad that motion failed. Nowadays, the folks in town celebrate their brightly feathered neighbors every third weekend in March with the Fitzgerald Wild Chicken Festival!



Visitors to Fitzgerald in south Georgia can find a large population of wild Red Junglefowl roaming the neighborhoods. The birds were introduced to the area 60 years ago and are now a regular feature in the small south Georgia town. (Special Photo/ Geoff Hill)

Join in the fun and get published!

We invite you to share your colorful creations to be published in the Market Bulletin. Submit your artwork to marketbulletin@agr.georgia.gov or mail to Georgia Department of Agriculture, Attn: Market Bulletin, 19 Martin Luther King Jr. Drive S.W., Atlanta, GA 30334-4250

Recipes for Tiny Tasters!

Buffalo chicken pasta bake

This easy-to-make Buffalo chicken pasta bake is perfect for kids (and adults) and can be customized to everyone's taste. Use your favorite hot sauce to adjust the spice level,

making it as mild or as fiery as you like!

Prep time: 45 minutes
Makes 6-8 servings

Submitted by Carly Williams, Wayne County 4-H



(USDA/Special Photo)

Ingredients

- 1 (12.5 oz) can chicken, drained
- 1 box spiral rotini noodles, uncooked
- 1 can black beans, drained and rinsed
- 2 oz Texas Pete hot sauce (or other hot sauce of choice)
- ½ cup ranch dressing
- ¾ cup mild cheese, shredded

Directions

1. Drain chicken. Add to medium bowl and shred.
2. Drain and rinse beans and add to the chicken.

3. Cook noodles according to box. Once done, drain and add noodles to the bowl.
4. Add hot sauce, ranch, and 1/2 cup cheese to the bowl and mix thoroughly.

5. Pour mixture into casserole dish. Top with 1/4 cup cheese and spread evenly.
6. Bake at 350 degrees for 25 minutes.

Courtesy of Georgia 4-H Pantry Pride program

GEORGIA COOKING: Sweet potato and kale breakfast burrito

Start your day right with this nutritious and flavorful sweet potato and kale breakfast burrito. Packed with vitamins and antioxidants thanks to Georgia-grown sweet potatoes and kale, this hearty breakfast will keep you fueled all morning. Enjoy the taste of the season with this delicious and easy-to-make recipe featuring fresh, local ingredients from Georgia farmers.

Ingredients

2 cups diced and roasted sweet potatoes with your favorite seasoning blend
2 tsps olive oil
2 cups diced onion
1 clove garlic, minced
2 cups diced red pepper
1 jalapeño, stemmed, seeds removed, diced
1 16-ounce container liquid eggs, or 8 shell eggs, cooked soft scrambled and set aside
1½ cups grated white cheddar, Monterey or pepper jack cheese
1 16-ounce bag of chopped kale, stems removed
1 jar salsa of your choice
¼ cup Cilantro leaves
10 soft taco size tortillas
Hot sauce of your choice

Instructions



(Photo by Georgia Grown Test Kitchen)

1. Heat oil in a large skillet over medium heat. When oil is shimmering, add onion, garlic, red pepper and jalapeño. Sauté until onions are translucent, about 5 minutes. Add kale, and sauté until wilted. Remove from heat, and add eggs and sweet potatoes, tossing to incorporate. Taste for seasoning.

2. Heat tortillas, if desired (this will make burritos easier to wrap), by

dipping your fingers in water to lightly moisten each tortilla before placing on a microwave safe plate and covering with plastic wrap. Microwave on high for 30 seconds. Keep tortillas covered with a towel while you roll each burrito.

Assemble

1. Place first tortilla on a cutting board

Georgia Grown in Season



Brussel Sprouts
Collards
Carrots
Citrus
Kale
Lettuce
Mushrooms
Sweet Potatoes
Spinach
Turnips

and spoon ¼ cup of the burrito mixture slightly offset toward the bottom third. Top with salsa, cheese, hot sauce, and cilantro.

2. Fold right and left sides in to partially cover the filling, then roll up the bottom half over and roll the burrito tightly. Set aside to serve right away, or immediately roll tightly in plastic wrap to freeze.

3. To serve from fresh: Grill both sides in a dry skillet to melt cheese if desired.

4. To serve from frozen: Remove burrito from plastic wrap. Wrap with a paper towel and microwave on high for 1-1½ minutes per side.

5. Eat!

Recipe courtesy of Georgia Grown.

AG FORECAST: Economic uncertainty, Hurricane Helene impact weighs on agriculture

Continued From Page 1

According to the most recent USDA farm income forecast, declining crop prices are expected to outweigh revenue gains from animal products, combined with slightly reduced input costs, leading to lower national net farm income in 2024.

Also, USDA analysis showed a decline in net farm income of 4.1 percent in nominal terms and 6.3 percent in inflation-adjusted terms nationally in 2024. However, Munisamy said these projections will not apply to Georgia because of the significant damages caused by Hurricane Helene, which resulted in lost output and infrastructure.

Speaking at the UGA Tifton Conference Center, Munisamy said Georgia agriculture had \$3.4 billion in cash receipts in 2023 but only expected and projected \$1.9 billion in 2024. The cause was Helene's damage, which UGA estimated was about \$5.6 billion.

Munisamy reported that most commodities in Georgia – such as cotton, poultry, beef, dairy, and specialty crops like pecans, blueberries, vegetables, and nursery products – suffered substantial output losses because of Helene.

Congress approved \$31 billion in disaster assistance to agriculture, but Munisamy said it remains to be seen how that money will be distributed to the affected states in the coming year.

Munisamy discussed immigration reform and the possible tariffs that will significantly affect Georgia's agriculture this year. Still, it was difficult to determine how much of an effect that would be. The incoming Trump Administration has made immigration reform a primary goal and has discussed using tariffs, but the specifics remain unknown.

Munisamy noted that agriculture across the country, and in Georgia in particular, is dependent on H2-A migrant workers, individuals from other countries who are permitted legally to travel to the U.S. temporarily for work.

“On one side, we are looking at law enforcement. We are removing people from the country that are here illegally. On the other side, agriculture is really starving for labor,” Munisamy said.

He added that the federal Adverse Effect Wage Rate (AEWR) had risen 36 percent last year, which, in turn, drove labor costs up for farmers.

The AEWR sets the minimum wage that the U.S. Department of Labor requires employers to pay H2-A workers. The rate is intended to protect American workers in the same region by preventing the hiring of foreign workers to depress local wages for similar jobs. Despite the recent AEWR increases, USDOL surveys show that the wage gap between farm workers and comparable nonagricultural jobs remains wide.

Munisamy wondered how stricter immigration and AEWR would affect agriculture. “How do we balance these two sides? Are we going to make the (labor) scarcity even worse? I don't know.”

Another unknown is the possibility of a trade war if tariffs are placed on goods from other countries. Munisamy said it would be different than the China trade war during the first Trump Administration, where there were a few months between placing tariffs and China responding likewise. “Countries that are going to retaliate will have their list ready,” he said.

Munisamy noted that U.S. Secretary of Agriculture nominee Brooke Rollins had promised that there would be aid to farmers if a trade war occurred when asked on the subject during her Senate confirmation hearing.

The 2025 UGA Ag Forecast is available online at the website extension.uga.edu/publications. Use the search bar by typing “2025 UGA Ag Forecast.”

Key takeaways from the University of Georgia's 2025 Ag Forecast:

- Food price growth in 2025 is projected to align with inflation at around 2.5 percent, although prices for food consumed away from home are expected to remain higher than those consumed at home.
- Declining crop prices are expected to outweigh revenue gains from animal products, combined with slightly reduced input costs, leading to lower national net farm income, according to the most recent USDA farm income forecast.
- USDA projects a decline in net farm income of 4.1 percent in nominal terms and 6.3 percent in inflation-adjusted terms nationally in 2024. These projections will not apply to Georgia because of losses sustained from Hurricane Helene.
- This year and beyond, numerous geopolitical risks combined with various proposed policies – including tariffs and retaliation, immigration controls, tax policies, energy strategies, and inflation-targeted monetary policies – will contribute to ongoing uncertainties surrounding U.S. and Georgia agricultural economic outcomes.

UGA's College of Agricultural and Environmental Sciences also provides an online report of Georgia's agricultural impact with tools that users can search by county or commodity. The report is available at the website discover.caes.uga.edu/georgiaagimpact.

Find Georgia Agriculture Online! www.agr.georgia.gov



@GeorgiaGrown: <https://twitter.com/GeorgiaGrown>



www.facebook.com/georgiangrown



@iamgeorgiagrown: <https://www.instagram.com/iamgeorgiagrown/>



<https://www.instagram.com/gamarketbulletin/>



www.facebook.com/GaMarketBulletin

Notice

Ads for the Feb. 19 issue are due by noon, Feb. 7. Submit your ads online any time at www.agr.georgia.gov/market-bulletin