

# FARMERS AND CONSUMERS

## MARKET BULLETIN

GEORGIA DEPARTMENT OF AGRICULTURE • TYLER HARPER, COMMISSIONER • WEDNESDAY, APRIL 16, 2025 • VOL. 108, NO. 8 • © COPYRIGHT 2025

### Georgia FLEX provides guidance to high school entrepreneurs

By Jay Jones  
jay.jones@agr.georgia.gov

**TIFTON** – Ten high school students with 10 unique ideas and a single dream of running their own business competed in the Georgia FLEX State Finals in Tifton this month. The young entrepreneurs pitched their businesses to a panel of judges on stage for the chance to win up to \$10,000 in seed funding and college scholarships.

FLEX stands for “Foundational Leadership and Entrepreneur X-perience” and collaborates with local businesses and educators to help students learn about running a business. Students representing their high schools competed in “Shark Tank” style, pitching their businesses to judges on stage at the University of Georgia Tifton Conference Center on April 2.

All students gave their one-minute elevator speech in the first round; then the judges chose three finalists for the next round, where they gave 10-minute presentations.

Addison Hilsman of Morgan County won first place and received \$10,000 for Elite Diesel Performance and Accessories.

See **YOUNG ENTREPRENEURS**, page 16

Attendees visit each student’s booth at the Georgia FLEX State Finals in Tifton. Students representing 10 high schools competed by presenting their businesses to a panel of judges, similar to the TV reality show, Shark Tank. FLEX provides an opportunity for students to experience real-life lessons of owning a business. (GDA/Jay Jones)



### Georgia Department of Agriculture honors school nutrition heroes for farm-to-school efforts

By Jay Jones  
jay.jones@agr.georgia.gov

**ATLANTA** – The Georgia Department of Agriculture recently recognized school nutritionists with a luncheon and cooking demonstration to spotlight efforts to bring fresh, locally-grown food to school cafeterias.

The luncheon was held on March 19 during Georgia Ag Week at Southern National, a restaurant in Atlanta’s Summerhill neighborhood. Georgia Grown Executive Chef Carlos Granderson provided the cooking demonstration and lunch.

The event also allowed Georgia Agriculture

Commissioner Tyler Harper, center, poses with school nutritionists from across the state during a luncheon hosted by the Georgia Department of Agriculture at Southern National in Atlanta. The event recognized their dedication to incorporating locally-grown food into school meals. (GDA/Jay Jones)



Commissioner Tyler Harper to thank school nutritionists and cafeteria workers for their work and reaffirm GDA’s efforts to support “farm-to-fork” initiatives.

Harper noted that good nutrition is key for students in learning. “We know that to be true, so the work that you do every single day helps ensure that our kids all across the state are able to obtain the knowledge they need to be successful in life,” Harper said. “You truly play a critical role in your nutrition programs in your school districts.”

Harper also recognized the challenges school districts face in accessing local farms to source food. He introduced Fred Rayfield, GDA’s Farm-to-School coordinator, who would work with schools to support their efforts.

Rayfield has over 20 years of experience in education and recently served as superintendent of the Thomasville City Schools System. Harper noted

See **SCHOOL NUTRITIONISTS**, page 14

### Farm Stress Summit targets improved mental health access for rural Georgia

By Jay Jones  
jay.jones@agr.georgia.gov

**STATESBORO** – Key stakeholders concerned with farmer well-being met recently in Statesboro for the Farm Stress Summit, where participants, including representatives from UGA Cooperative Extension, the Ag community, and state and local mental health care providers, gathered to address the complex topic of suicide in Georgia’s rural communities and share notes on improving access to mental health resources, and discuss what support is currently available.

UGA Extension organized the Farm Stress Summit in 2019, looking for ways to address an alarming rise in suicide among farmers. A national study by the Centers for Disease Control and Prevention showed farming had the third highest suicide rate of any occupation. Additional research showed that in Georgia, the suicide rate for farmers was about 51 per 100,000, compared with 14.9 per 100,000 for the overall population of workers.

The summit was held at the Center for Continuing Education at Georgia Southern University on March 13 and co-hosted by and the Georgia Foundation for Agriculture. Previous summits were held at Tifton, Macon and Jasper.

See **RURAL STRESS SUMMIT**, page 16



Georgia Agriculture Commissioner Tyler Harper and Kevin Tanner, commissioner of the Georgia Department of Behavioral Health and Developmental Disabilities, participate in a session of the Farm Stress Summit held at the Center for Continuing Education at Georgia Southern University in Statesboro. State and local mental health providers meet annually to discuss ways to improve access to mental health resources in underserved and rural areas. (GDA/Jay Jones)

## Advertise in the *Market Bulletin*

Classified advertisements in the *Market Bulletin* are free to subscribers and limited to one ad per issue per subscriber number. Ads run a maximum of two consecutive issues unless requested otherwise. Advertisements from businesses, corporations, dealerships, real estate agents or other commercial entities are not permitted. All items advertised must be farm-related.

Advertisers and buyers are advised to be aware of state and federal laws governing the sale and transfer of live animals. GDA rules also require the submission of certain documents attesting to the health and/or viability of livestock, plants and seed submitted for sale before ads for those items can be published. Those rules are posted online at <http://agr.georgia.gov/classified-ads-guidelines>. They are also summarized beneath the headers of all affected Classified categories in every issue of the *Market Bulletin*.

The Georgia Department of Agriculture does not assume responsibility for transactions initiated through the *Market Bulletin* but will use every effort to prevent fraud. Advertisers are expected to fulfill the terms of their offers. Failure to do so through either negligence or intention may require the *Market Bulletin* to refuse future ads.

*Market Bulletin* staff reserves the right to designate ad length and to edit for spelling, grammar and word count. Classified ads are limited to a maximum of 30 words, including name and contact information.

### There are three ways to submit your ad.

**Fax:** 404.463.4389

**Mail:** Georgia Department of Agriculture  
Attn: Market Bulletin  
19 Martin Luther King Jr. Drive SW  
Atlanta, GA 30334-4250

**Online:** [www.agr.georgia.gov/market-bulletin](http://www.agr.georgia.gov/market-bulletin)

Please include your subscription number on all mailed and faxed correspondence.

**Questions about advertising? Call 404.656.3722**

## Subscribe to the *Market Bulletin*

A one-year subscription to the *Market Bulletin* is \$10 and includes both print and online access.

**To subscribe or renew an active account online** visit [agr.georgia.gov/market-bulletin](http://agr.georgia.gov/market-bulletin) to pay using a Visa or MasterCard.

**To subscribe by phone, renew an expired subscription, update your address or report delivery problems** call 404.586.1190 or 800.282.5852.

**To subscribe by mail** send a check or money order payable to the Georgia Department of Agriculture along with your name, complete mailing address, email address and phone number to:

Georgia Department of Agriculture  
Attn: Market Bulletin  
P.O. Box 742510  
Atlanta, GA 30374

## Call the Georgia Department of Agriculture

**404.656.3600 | 800.282.5852**  
**Avian Influenza Hotline 770.766.6850**

Georgia Grown  
**404.656.3680**

Food Safety  
**404.656.3627**

GATE  
**855.327.6829**

Plant Protection  
**404.463.8617**

Equine Health  
**404.656.3713**

Licensing  
**855.424.5423**

Animal Protection  
**404.656.4914**

State Veterinarian  
**404.656.3671**

Fuel and Measures  
**404.656.3605**

Market Bulletin  
**404.656.3722**

Georgia Department of Law Consumer Protection Unit  
**404.651.8600 | 1.800.869.1123**

Access the *Market Bulletin* online any time at  
<http://www.agr.georgia.gov/market-bulletin>

### FARM MACHINERY

Please specify if machinery is in running condition.

#### TRACTORS

(2) 1956 Ford 641 Gas Jubilee Tractors, need work. 1 is 12V w/good lug tires, other 6V w/OK turf tires: \$2800/pair. Other items for sale, ask about package. Pete **Batesville** 706-949-1567

1025R John Deere, mower deck, easy off, 4WD, 70hrs, Middle Buster, Inc. plow included: \$10,500. Jim Young **Canton** 678-446-8783

13 month-old full-blooded Brangus bull for sale. Benny Lasseter **Franklin, GA** 678-378-1884

1935 Silver King 4-wheel tractor #642: \$3500 OBO; also John Deere lawn mower, 48in cut, doesn't run: \$250. Call between 6-8PM. John **Greensboro** 706-467-3414

1947 8N Ford tractor. Good running condition, good paint. Comes w/4ft bush hog & 4ft box scrape blade. Asking: \$3000. Gary Fry **Elberton** 762-721-0650

1956 Cub Farmall, complete rebuilt engine, new clutch and pressure plate, disc turning plow, layoff plow, cultivators VGC: \$3700. Raymond Long **Loganville** 770-466-2435

1966 David Brown 990 Selectomatic diesel. Runs good: \$1500. Mike **Macon** 478-550-1891

1978 Farmall 140. low hours, always kept inside, good sheetmetal with full cultivator, plow, double section IH discs. 10-disc bush/bog: \$6500. 1 horse-turner, drag-tooth harrow with handle, 1 double-tooth harrow no handle. Edward Marable **Trenton** 423-580-4839

1984 Model 240 Massey Ferguson. Very good condition, 2000 hours. Always been garage kept: \$12,500. Text for pictures. Harley Roach **Walhalla, SC** 864-710-4738

1994 Kubota L3450 DT 7 4 wheel drive w/backhoe, front loader. Only 250hrs. Looks new, works like new: \$21,000. Sam Wood **Morrow** 678-758-7887

1994 Massey Ferguson 231 tractor. Cranks, runs and operates good. Nice tractor: \$6000. Jerome Jones **Whitesburg** 770-301-1755

2 Allis Chalmers C models tractors, both antique, 1941 & 1948 w/cultivator, saw, plow, hydraulic lift, trailer and more. 1948, runs great: \$6000/both. Edward Weber **Barnesville** 470-257-0926

2003 Kubota 3000 tractor; scrape blade; King Kutter bush hog; Husquvarna lawnmower. Samantha **Blue Ridge** 706-838-5232

2010 Case IH Farmall 95 MFWD. 735hrs, 90HP 4.5-liter, 4-cylinder turbo diesel, 4WD, 540 Independent PTO, 12gears, mechanical locking rear differential, 2 hydraulic remotes, heat, A/C, NO Loader. Josh Moates **Canton** 770-324-8447

2013 NH Boomer, hydrostatic, 40 Compac, 4WD, loader, hook-ups, 143hrs, like new, 2014; BH15 Bushhog extra parts, new Bushhog blades, towbar, bolt kit: \$21,000. Sam **Marietta** 770-514-1431

2018 Kubota M5111HDC. 1850hrs. Self leveling loader LA1854S. 2 remotes. Rick **Monroe** 678-522-6560



2021 John Deere 4052 cab bucket front mower. 500 hours remaining warranty. 4x4, heated A/C radio, front and rear hydraulic hookups, 4 rear 3 front. Call. **Waycross Wayne** 912-288-1939

2021 New Holland 75 PowerStar, 345hrs, 3rd function, 4WD, w/cab: \$56,500 OBO; 8ft Bushhog cutter: \$3500 OBO; 22ft bumper-pull trailer, w/2 7,000lb axles & brakes: \$5600. James **Ty Ty** 229-272-2653

2440 JD for sale; 399 M.F. For sale. Jacob Furney **Milan** 229-315-1990

2810 Ford diesel 2265hrs. Bush hog, box blade, boom pole, spreader and seeder. 18-foot country boy trailer: \$14,000 for all. Leave voice message or text. Ricky Mullinax **Lawrenceville** 770-601-1810

3pt hay and dirt scoop: \$325 together or \$200 separately, \$200 for 3pt hay and \$150 for dirt scoop. Come and get it. Maurice Muhammad **Maxeys** 762-753-5785

4000 Ford diesel tractor: \$4000; Taylor Way 10-disc harrow: \$950. Gober **Buchanan** 770-359-7815

451 Massey Ferguson, diesel, power steering tractor: \$12,000; rotary mower, 6ft: \$500. C. Keen **Abbeville** 229-467-2808

8N Ford tractor, new muffler, exhaust pipe, etc., plus brand new tires, front and back. Needs minor repairs: \$2000. Leave message. Dawn Gentry **Cusseta** 706-662-3836

B 8200 Kubota tractor. 750Hrs, shed kept: \$4900. New battery, in great shape. Also, scrape blade and boom pole. Charles Heath **Rome** 706-295-5104

Branson 3015R tractor. Excellent condition, 163hrs w/5ft Titan bush hog, front-end loader BL150, Land Pride tiller and fertilizer spreader: \$20,000/all or \$18,500/tractor, bucket bush hog. Scott Plemmons **Cumming** 770-361-7091

Farmall 130, bush hog, cultivators with side dresser, spare shares, new ignition system, carb and water pump. Tree damaged cowling and 1 rim: \$3000 Mike Tackett **Braselton** 678-617-0873

Ford 3000 40HP 3 cylinder diesel 8 speed transmission. Runs good looks great with new paint: \$6500. For pictures call. David Popham **Ball Ground** 678-313-5327

Ford 3930 diesel tractor with Ford 7310 front-end loader. 50HP tractor with Shuttle Shift. 767hrs, new tires, runs, operates like new. Must see to appreciate. Larry Love **Danielsville** 706-255-5596

Ford tractor 1620 HYD 1300hrs bought new. Runs, drives great. All service records oil and filter change every 50hrs. Garage kept: \$7500 cash. R. Rooks **Winder** 770-867-1847

JD 1946 A: \$2650; 1948 B 3pt: \$3200; 1951 A: \$1650. Extra and new parts. Ted Dixon **Gordon** 478-804-2567

Jinma 3 cylinder diesel tractor. 2 wheel drive. Good lift and PTO. Works as it should: \$3000. Randy Smith **Cumming** 404-409-5529

JD 4955; JD 235 harrow 23ft; KMC 8-row strip till; 3000gal fertilizer storage tank; 12-row sprayer, 200gal tank, hydro booms; 2-row KMC cultivator. John Payne **Allentown** 478-230-5372

John Deere 2200 tractor for parts or restoration. Call for details. Also, roofing tin in excellent condition available, 12ft-29ft: negotiable. A. Anderson **Collins** 912-245-8460

John Deere 5085E cab, 4 wheel drive, no loader, 268hrs, new condition: \$48,000. Garage kept. Hubert Lewis **Buchanan** 770-883-6004

John Deere 900 HC. 1986 high crop cultivating tractor. Rare find. Great shape. Comes with plows. 2300hrs. All original. Ashley Rodgers **Douglasville** 770-714-4218

Kubota BX23S FWD diesel, 109hrs, 21.6hp, w/front loader and backhoe & thumb; also new 50in Kubota tiller. Donald Wood **Winterville** 706-207-8624

Kubota M9540, MF 240, implements, gates, trucks, trailers, & more. On-site auction. 10am Saturday May 3, 2025. 1027 Sam Bruce Rd **Royston** GA. Sam Williamson GAL2585, [www.SamWillAuction.com](http://www.SamWillAuction.com)

Massey Ferguson 150 diesel. Looks, runs, drives great. No issues. Work ready: \$5500; Bushhog and harrow available: \$1000. Charles **Commerce** 706-658-6081

Massey Ferguson 360 Perkins Diesel with front-end loader. Not running: \$5900. Wendell Prince **Eatonton** 478-952-1552

Massey Ferguson TO35, gas: \$2,500. Bob Nealey **Canton** 770-843-0561

MF 135, gas, p/s, 1725 hours, like new. Tires, VGC, owned 22 years: \$5550. Wayne Quarles **Demorest** 706-499-2718

Super A Farmall with cultivator, runs good: \$1900; Famall Cub with belly mower, runs good: \$1900. Robert Collins **Calhoun** 706-602-9027

Yanmar 18hp diesel 2002 w/Land Pride bush hog. Buck **Madison** 404-583-3337

### CUTTERS AND MOWERS



2019 Bush-Whacker ST-180 Elite, excellent working condition. Tackle the toughest mowing challenges: \$13,250. Andy Adams **Hartwell** 706-376-8968

48-inch bush hog only used half dozen times looks a little old but mechanically new: \$900 OBO. Randy Richter **Milner** 678-409-5694

5ft finish mower: \$250; 1-bottom plow: \$200; 5ft blade: \$175; wire stretcher: \$125; 5gal Rotella diesel motor oil: \$500; (3) 175gal water trough. Sam Moon **Homer** 706-677-3540

6ft Brown brush mower, excellent condition: \$5000 OBO. Ronnie Singleton **Buena Vista** 706-566-2937

Bushhog RDTH 84 finishing mower. 7-inch cut, rear discharge, new belt, excellent condition, barn kept: \$1300. Brian Hart **Lafayette** brianhart@windstream.net 706-996-5070

**CUTTERS AND MOWERS**

John Deere CX15 Flex-Wing, 2018 model. Field ready: \$10,500. Andy Adams **Hartwell** 706-376-8968

Krone 283S cutter, Kuhn GMD700 cutter, Krone KW5.52 17ft tedder, Sitrex 8-wheel rake, JD 467 baler net wrap, (2) 3pt hay spears. Ryder Griffin **Hoboken** 912-288-0432

Land Pride 5ft model 1660 finishing mower, like new, used one time, kept in garage: \$2300 firm. Randy Ellis **Milledgeville** 478-288-4585

Rotary mower 72in Rhino TW72 w/owners manual, very little use: \$1800; mower 7ft sickle w/balanced head, International, 1300, 3pt hitch, owners manual: \$1800. David Slonaker **Midland** 706-569-6105

Woods 5ft belly mower for Farmall Cub, excellent condition: \$500. Marvin Lyle **Pendergrass** 770-533-2887

Woods 5ft finishing mower: \$600; 5ft Bush Hog: \$400; pull-behind fertilizer/seed spreader: \$100. Tractor and other implements also for sale, ask about package. Pete **Batesville** 706-949-1567

**PLANTING AND TILLAGE**

1-row cultivator w/middle plow: \$350; t-post fence sleeves: \$3/ea; chicken feed line w/plastic pans: \$1/ft plan motor & control; other misc. items also available. Selling the farm. Charles **Statham** 470-273-1698

2-row cultivator with 3pt hitch: \$900; 2-row Covington planter with corn plates: \$900. Gary Melton **Cedartown** 678-988-9552

2017 Kuhn Krause excellerator 8005-25 25ft turbo till. Great shape: \$45,000 OBO. Zach **Bridgeboro** 229-881-6383

2022 Unverferth model 332 6-row ripper stripper: \$25,000. Paul Harrell **Cairo** 229-377-4020

Allis Chalmers no till planters 333, 4 planters, needs 1 seed box and 1 chain: \$2250. Charles Adams **Marietta** 678-313-1873

B&B Harrow: \$400; dirt scoop: \$175; subsoiler: \$125; 2-bottom plow: \$350; pull-type harrow: \$125; rotary mower: \$400. Frank Massey **Madison** 404-273-3777

Blanton 10-disc bush/bog harrow-3ph: \$500; Oliver 10-foot cultipacker, pull type: \$500. C Chandler **Tallapoosa** 770-508-7093

Case 490 disk harrow, 26feet: \$1900; Brillion Cultipacker two roller hydraulic lift: \$2000. Roy Southernland **Chatsworth** 706-428-1779

Case IH 335 vertical till, 31ft., disk 17.5inch: \$50,000. John Deere 726 mulch finisher, 24.9ft: \$16,000; Krause 4118 field cultivator, 21ft: \$3,750. Paul Harrell **Cairo** 229-377-4020

Collari 6ft top quality planter one pass till and plant. Like new, only used a couple of times: \$4800. Charles **Jefferson** 404-317-6173

For sale - two Troy-Bilt garden tillers, Pony series, very good condition. One: \$250; other: \$200. Larry Smith **Rome** 706-234-1347

For sale - older model Troy-Bilt rear time tiller, good condition, used very little. Harford Cook **Kennesaw** 770-841-2359

John Deere 1635 disc harrow, 13'3" wide, 11-inch spacing: \$7250; Case 3900 folding disc harrow, 29' 4" wide, 7 1/2 inch spacing: \$9500. Jarrell Cagle **Rome** 706-676-8376

John Deere 1790 6-row 30 in, 11-row 15in w/monitor & books; Leland cypress posts, looks like cedar, many sizes: reasonably priced. Allan Brittain **Jackson** 404-328-5756 abrittain47@gmail.com

John Deere offset 7.6ft disk, model MX225: \$6500; 3pt hitch field cultivator, 9ft: \$750. Call/text. Don Sullinger **Royston** 706-680-5281

KMC Ripper Spider 4 row with hyd. row marker: \$1200; John Deere 4 row rolling cultivator: \$1200. Tommy McAllister **Buena Vista** 706-993-5950

Massey Ferguson 2-row planter with bean, corn, sorghum plates, bushel seed hoppers, two fertilizer attachments. Larry Blaxton **Macon** 478-808-9414

Maxim heavy duty front tine tiller, chain drive. New 6.5hp (OHV) engine w/layout plow: \$550. Alvie Killingsworth **Norcross** 770-448-2564 or 678-231-6551

One row planter and fertilizer, mounted on cultivator frame: \$1500. Eddy Tomlinson **Calhoun** 706-280-8068

Rain-flo 2600 plastic mulch layer: \$4000. 8y/o. Lays 5ft and 4ft plastic film, on raised or flat beds. Need 80HP to pull. Ashley Rodgers **Douglasville** 770-714-4218

Troy-Bilt Super Bronco rear tine rototiller. Runs well, recent service: \$150. Bob Horansky **Jackson** 404-965-1163

Troybilt Horse, good condition, manual start: \$1100. Paul Hart **Dalton** 706-270-1215

Turning plow County Line model #1BPCL. cat 0. Like new: \$600. Mike Tackett **Braselton** 678-617-0873

Two 71 John Deere planters w/large seed hoppers on Pittsburgh cultivator: \$2000. Charles Rogers **Chester** 478-697-1942

**GRADERS AND BLADES**

5 1/2 foot box scrape blade 3pt older, heavy duty VGC: \$500; King brand 8-disk harrow 3pt VGC: \$500. Terry **Commerce** 706-658-6081

6ft scrape blade in good useable condition, 3pt hitch: \$375. J.W. Akins **Dalton** 762-201-9337

7-foot deep box land plane (box blade): \$1800. E. Kenney **Vidalia** 912-293-2890

Bush Hog 120-08 hydraulic adjustable scrape blade, 3pt: \$2800; Bush Hog 2101 post hole auger with 2 augers: \$1000. Ryan Baerne **Nicholson** 706-247-6240

Industrial America 12-foot 120R 6-way blade. Excellent like new condition: \$5500. They sell for over \$8000 new. Call for more info. Danny Hogan **Dexter** 478-984-6415

Reynolds 14 curb yard dirt pan. Good condition: \$15,000; Fork lift mast with 4ft forks: \$500; Benshaw well control panel 2000 model: \$1500. William Sparrow **Pinehurst** 478-954-5903

**PICKERS AND HARVESTERS**

1972 combine: \$2500; also 1960 combine: \$1500. Both barn kept and running condition. Ready to go. Andy Adams **Hartwell** 706-376-8968

Clipper Super 69D seed cleaner: \$4500. Excellent condition. 12 screens, brush feed hopper, exhaust air ducts and surge hopper included. Vincent Crow **Chatsworth** 770-335-0635

FMC sweet corn picker. One row picker. Strong hydraulics. Everything works as it should. 4-wheel trailer is included: \$6500 OBO. Jessie Thomas **Maysville** 706-380-2993

John Deere 630 harrow, 32ft: \$6000; Crustbuster Boll Buggy, 16ft, Vane Packer, 4 tires: \$500; John Deere 10-bolt dual wheel hubs: \$600/pair. Paul Harrell **Cairo** 229-377-4020

Savage 8042 pecan harvester, 2020 year model in great condition: \$10,500. Tony Cashwell **Quitman** 229-263-0746

**HAY AND FORAGE**

575 new Holland baler. Hydraulic bale tension, hydraulic tongue. Field ready, kept under shelter: \$12,000. Jimmy Hendrix **Metter** 912-687-5179

849 New Holland roll baler, good for parts or can be fixed to use. Randy Milam **Tyrone** 770-480-2223

Anderson NWX660 bale wrapper. Fully remote, always kept under a shed, only 400 bales wrapped with it. Charles Stewart **Greensboro** 706-817-1862

DM/5 Sitrex disc mower used very little: \$4500. Jake Shirley **Cornelia** 706-778-2024 or 706-949-1904

Fella TH540 hydro tedder. 4-basket, hydraulic fold, pull behind. Good shape. Field ready: \$4000. David Blizzard **Milledgeville** 478-223-1192



Following items for sale: baler, cutter, tedder and hay rake: \$8500. Best offer takes all. Yasi **Atlanta** 404-246-0589

Hay rake: \$2500; square baller: \$4500; accumulator: \$4500. All are in good condition. Earl Swain **Dahlonega** 706-344-9054

JD 450E round baler, 4x5, baled 850 bales, net-wrap and string: \$28,000. David Petit **White Plains** 706-614-3913

Kuhn fold-up hay tedder, New Holland 256 Rolabar rake, New Holland BR740 round baler. All shed kept, great condition. Wayne Powell **Menlo** 706-676-5582

Kuhn GMD313TG 2011 trail mower, 11.5ft wide, needs very little work. Been sheltered and cared for: \$10,000. Kirk Little **Lyons** 912-326-3512

Retiring from hay business. 4ft Kuhn disc mower, Kuhn hay tedder, Kuhn rake SR108, Ford rake, Hesston in-line square baler 4550, Maxilator accumagrapple. Rex Palmer **Auburn** 770-867-9589

Roto cutter round bale cutter, 3pt hitch, PTO driven w/cylinders. Cuts bale in half or quarter: \$1000. Bob Brady **Augusta** 706-373-8397

Sitrex hay fluffer 4 basket, working: \$1500; V rake on Kelderman caddy: \$1500. Can send pictures. Hugh Willcox **Winterville** 706-201-2800

Vermeer Rebel round baler, excellent shape, very little use. 4-basket hay tedder & brand new V-Rake: \$16,500 firm for all. All stored in shed. Scott **Sautee Nacoochee** 404-310-2558

Vermeer round baler 505M Classic String tie, sheltered, picture available, average 50 bales per year: \$8500. Alton Ray **Washington** 706-678-2801

**SPRAYERS AND SPREADERS**

12 row sprayer for sale, used 1 season. Make/model BE 39300-28X 300gal, 35ft boom X fold. Excellent condition: \$5,000. Joe Lee **Nicholls** 912-614-5757

Hot water pressure washer, hoses, reel, 300gal tank, 3 guns. Needs battery & minor repair: \$500. T. Oneal **Greensboro** 706-817-9179

Spray Innovations mist sprayer. Agricultural power sprayer, 5 nozzles, engine driven: \$2900. Like new condition, always sheltered. E. Worthington **Hampton** 404-729-5370

Spreader PTO driven. Model #FS20 58-gallon. Excellent condition, low hours: \$500. Mike Tackett **Braselton** 678-617-0873

**OTHER MACHINERY AND IMPLEMENTS**

1, 2, & 4-row cultivator; 1-row subsoiler; dirt scoop; 1 & 2-row rolling cultivator; 6ft blade; 2-row cultivator & Cole Hi-Speed planters; 23ft sprayer w/folding booms Cash. Carl **Blackshear** 912-449-6573

**Looking for your subscriber number and expiration date?**  
Find both above your name on your mailing label:

**Subscriber Number    Expiration Date**

#00000000# 1/01/2021

MARKET BULLETIN SUBSCRIBER  
19 MARTIN LUTHER KING JR DR SW  
ROOM 330  
ATLANTA GA 30334-0000

**Subscribe to the Market Bulletin**

An annual subscription is \$10 (26 issues) and includes online access to view the *Market Bulletin*, place Classified ads and search the Classifieds online.

New Subscriber     Gift subscription  
 Renewal (Subscriber No. \_\_\_\_\_)

**Please deliver the Market Bulletin to:**

Name: \_\_\_\_\_

Address: \_\_\_\_\_

City: \_\_\_\_\_ State: \_\_\_\_\_ Zip code: \_\_\_\_\_

Phone: \_\_\_\_\_

Email address: \_\_\_\_\_

Check here if you prefer an online subscription (the paper WILL NOT be mailed to you).

**Please bill this subscription to:**

(  Check here if same as delivery address)

Name: \_\_\_\_\_

Address: \_\_\_\_\_

City: \_\_\_\_\_ State: \_\_\_\_\_ Zip code: \_\_\_\_\_

Phone: \_\_\_\_\_

Email address: \_\_\_\_\_

Please make your check or money order payable to the Georgia Department of Agriculture and mail with this form to:

Georgia Department of Agriculture  
Att: Market Bulletin  
P.O. Box 742510  
Atlanta, GA 30374-2510

You may also pay with a Visa or MasterCard online at <http://www.agr.georgia.gov/market-bulletin> or by contacting our Consumer Call Center at 800.282.5852.

**Market Bulletin Classified Ad Form**

All ads are scheduled to run in two consecutive issues, unless requested otherwise. Subscribers may run one free Classified per issue. Multiple ads per issue may be purchased for \$10 per ad (price covers two issues). Ads are limited to 30 words, including your name, city and phone number.

Category (e.g., Farm Machinery; Farm Animals): \_\_\_\_\_

Classification (e.g., Tractors; Cattle): \_\_\_\_\_

Phone number: \_\_\_\_\_

Subscriber number: \_\_\_\_\_

Border (\$5)     Photo (\$20)

Additional Ad (\$10)

*Only applies when multiple ads run in the same issue.*  
Please mail a check or money order for the exact dollar amount of your choice with your ad. Enclose photo with ad and payment, or email (.jpg) to [MBClassifieds@agr.georgia.gov](mailto:MBClassifieds@agr.georgia.gov).

**Mail this form to:** Georgia Department of Agriculture, Attention: Market Bulletin, 19 Martin Luther King Jr. Dr. SW, Room 330, Atlanta, GA 30334  
**FAX to:** 404.463.4389

## OTHER MACHINERY AND IMPLEMENTS

3-point hitch log splitter. Hooks to tractor hydraulics, new hoses, lay down version. Bruce Goddard **Brooks** 770-480-7319

6000-gallon steel fertilizer tank: \$1200; Super B dryer, M# AS-400, 1715hrs: \$400. Paul Harrell **Cairo** 229-377-4020

Citrus grower retiring in central Florida. Packing facility selling small Junior Unit. Perfect for growers with 30-40 acres. Call for details. Can send photos. Bill Reed **Weirsdale, FL** 352-427-7794

Clipper grain cleaner model M2B. Bought from commodity traders in 2012 and is good working order. Additional screens included for both corn and popcorn. Asking: \$4,500. Brad **Rome** 706-255-8861

Craftsman riding lawnmower. 12y/o in good condition, needs a new battery: \$600; Echo 12inch chainsaw: \$50; sheet metal screws, 40lbs: \$20. Larry Smith **LaGrange** 706-412-3060



Rare vintage Meadows Mill 20in, serial #27895 side sifter attachment, belt pulled. Recently used and in great working order. A fine mill. Asking: \$7,500. See other ads. Brad **Ranger** 706-255-8861

## HEAVY EQUIPMENT

Please specify if equipment is in running condition or not.

## FORESTRY AND LOGGING EQUIPMENT

1997 GMC Chipper body truck with 1999 Vemore chipper, model BC1230A; 2019 Cormidi mini skid steer, model C1500 with grapple and bucket. Kenneth Taylor **Cleveland** 706-224-6169

4 8ftX16ft swamp mats. Support for wet work, fair condition: \$300/ea. Dennis **Gillsville** 678-873-0157

Band sawmill for sale. Cuts 16ft in length. Call for further details and can send pictures: \$4000. David Chambless **Dawson** 229-894-1561

Hud-son 28in band saw mill, precision cut, fully assembled, ready to saw, American built, under warranty, double pillar block system: \$6000. Jim Lugo **Royston** 706-245-9490

## CONSTRUCTION EQUIPMENT

8.5x20 Tilt trailer dual tandem 12-ton. New wheels, tires, lights. Metal flooring, electric brakes. Adjustable Pintle hitch. Chance Kelley **Haddock** 478-319-7678

D5M Caterpillar 1997 high-track dozer, new sprockets, new rails, new pads and all new knuckles, 6-way blade, 350hrs. Photos available: \$52,500. James M. Morris **LaFayette** 423-304-8022

Stow model CM-9, 9 cubic foot, pull behind concrete mixer w/7HP motor: \$1500. Andy Adams **Hartwell** 706-376-8968

## TRAILERS

## LIVESTOCK HANDLING AND HAULING

1993 Sundowner living quarter trailer, 32ft long, 4 horse slant load, very good condition: \$17,500 OBO. Pictures available. Martin Taylor **LaGrange** 706-773-1880 or 6624



2000 Star 29ft 4-horse slant load trailer w/front tack room. New coupler, tires, steel wheels, 7-way round, and lights: \$10,000. JR Carr **Concord** 404-276-1169



Arrowquip Q-catch 74 series. Excellent condition, only used once. Retired, don't have cattle anymore. Includes corral panels: \$25,000. Jack Boggs **Comer** 828-506-9779

Double D goose neck cattle trailer, also cattle head gate, cattle scales. Also drill press, table saw, Olympic weight bench, barbell with weights, dumbbells. Rex Palmer **Auburn** 770-867-9589

## EQUIPMENT TRAILERS AND CARTS

24-foot Hooper gooseneck flatbed equipment trailer. Electric brakes, dovetail with ramps, new 14 ply tires, 7-ton: \$6000. David Blizzard **Milledgeville** 478-223-1192

4x8ft tilt trailer: \$400. M. L. Garrett **Statham** 770-402-7934

5x10 single axle utility trailer, 2in ball, 205/75/15 tires, pressure treated wood deck, enclosed light boxes, 3,000lbs axle: \$1200. Very good condition. Photos available. Phil Crane **Juliette or Powder Springs** 404-368-7094

6.5X16 trailer, ramps, oak floor, 7 point wiring hookup, 2 new 3500lb axles with electric brakes, excellent condition, stored inside, new tires and wheels: \$2800. Kim Bryant **Monticello** 706-476-0083

Homemade flatbed trailer, gooseneck 24ftx7ft 8inches. House trailer axles and tires, oak floor: \$800 Ray Greeson **Adel** 229-507-2855



New 28ft cattle feeder wagons: \$6550; New 3-ton creep feeders: \$4,850 (Gates available in 15 and 19 inch wide openings). Georgia Grass-Fed Beef. G.H. Riddle **Rome** 706-728-4859

Swartz 25ft goose neck trailer. Less than 500 miles, 2017 model EQ820-57TG. Photos available: \$12,500. Herb Harris **Jasper** 404-372-3375

## CROP TRAILERS, AND CARTS

24x8ft Gooseneck hay trailer, dual axles, lights & ramps, w/removable side bodies. In good condition. Call for details. R. Spratlin **Woodland, AL** 256-610-7064

4-wheel side dump forage wagon, Gehl 9000 Hydra-Tilt box, field-ready, 10ftWX13ftH x12ftL, 8 ton capacity: \$4000. Richard Acree **Calhoun** 706-629-7694



April 2021 Tempte Super Hopper 42X96x78. Aluminum fifth wheel plate, suspension. Lift-axle, tire auto-inflate/deflate, 2 Vibrators, oiler, Hopper-view windows. All mill to mill use. No salt or fertilizer: \$35,000. Charley Courson **Blackshear** 912-506-2367

## VEHICLES

Please specify if vehicles are in running condition.

## TRUCKS

1992 F-700 Ford dump truck: \$7500 OBO; 1993 Ford F-450 Heavy Duty, propane-operated, new tires: \$2800 OBO. Kenneth Taylor **Cleveland** 706-224-6169

2003 GMC W-3500 w/landscape body, 92k miles, nearly new tires. AC, power steering and brakes, extra clean. David **Cedartown** 770-748-8929

2005 Chevy Silverado 2500 HD, Crew Cab, 4x4, 250,000miles. To sell with a 2006 Springdale Bunkhouse camper M296 BHGS. Original owner of both: \$24,000. Text for pictures. Thomas Caraway **Grayson** 678-313-9190



1996 Peterbilt 379. 282 wheelbase. 200K miles since rebuild 12.7 Detroit and Eaton 13-speed: \$32,000. Charley Courson **Blackshear** 912-506-2367

2006 Ford truck, 2wd, 8ft utility bed w/100gal fuel tank. 5spd tans, 135k, one owner, great shape, new tires. Barney Walker **Fayetteville** 770-461-7167

2015 Mack R600, 299,000 miles, 40KR, 10sp & 2018 Trinity Eagle stainless 45ft trailer: \$125,000/pkg. Will split. Gary Alexander **Starr, SC** 864-483-4669

Ford Excursion, 4WD, gas, year 2000, many new parts, good vehicle for someone who needs it: \$6500. Call for more details. Rembert Cragg **Alto** 706-499-8063 or 706-499-2999

## TRUCK ACCESSORIES AND PARTS

1999 Lance Truck-bed camper model #815 Lite 8'6", stable-lift electric drive under 84.5" ID and manual jacks. Fully self-contained. Never leaked. Good condition: \$5,500 Mike Tackett **Braselton** 678-617-0873

400 Ford motor, 120,000 miles. Buster Jenkins **Jackson** 770-560-7782

8-lug 16in rim chrome trim new tire 235/85/r16: \$200; log splitter, 3 point hitch, 22in: \$300; John Deere bush hog JMX6: \$2500. Gene Lynn **Tyrone** 404-432-1325

Construction camper top for short bed pickup truck w/hydraulic ladder rack. Measures 6ft 2in wide, 6ft 11in long: \$600 OBO. Martin Ashley **Danville** 478-697-9953

White camper top for S-10, Ford Ranger or small Dodge, full-size bed. Good for electrical or plumbing contractor. All metal. Charles Sawyer **Mount Airy** 706-768-4776

## UTVs/ATVs

2013 XRT Club Car, Kubota diesel motor, 4seater, new wheels and tires, 4x4, lights. Runs good. 1700Hrs, automatic transmission, receiver hitch, dump bed, aluminum frame: \$5000. Chance Kelley **Haddock** 478-319-7678

Like new John Deere Gator HPX615E. One button automatic 4WD. Has 30 hours. Extras added: front windshield and push button electric dump bed: Asking \$12,500. Jacob Sullins **Cartersville** 678-858-3985

UTV 2021 Polaris 570 EFI Crew, 250 hours, 1300 miles, excellent condition: \$10,500. Fred Granitz **Meansville** 478-214-3133

## GOLF CARS

Club cart, low hours: \$2500; John Deere 345 lawnmower, 54in cut: \$950; Bush Hog stalk cutter, 5ft heavy duty rotocycle: \$700. C. D. Gravitt **Buford** 770-945-4371

## BOATS

2014 Riverhawk B-60 custom. 15'3"x5' fiberglass. 2015 9.8hp Tohatsu 4stroke elect start. com-fab galv trailer, trolling motor fish finder 3 chairs. Dual batteries. Low hours. \$5,000 Mike Tackett **Braselton** 678-617-0873

Gheenoe, 15.5ft length, 3ft beam, w/trailer and Yamaha 9.5hp extended throttle 2-stroke motor. Cedar bench seats, place for front-mount trolling motor: \$3,000. Debra **Maysville** 706-654-8591

Several old gas motor boats: free. Some on trailers. Scott **Keyville** 706-360-8988

## LAWN AND GARDEN

Please specify if machinery is in running condition or not.

## GARDEN TRACTORS

Heavy duty craftsman garden rear 18 tine tiller. Used very little and always garage kept never fails to crank. Very good condition: \$400. Elaine Coleman **Lyons** 478-299-8318

John Deere ZTR, 19HP, 48-inch, VGC, commercial, one owner: \$2150. Richard Ward **Winston** 770-756-7297

Old 6HP Tecumseh front tine rototiller. Running when last put up: \$60; Large heavy gauge wheel barrow: \$115. Pete Avers **Snellville** 770-979-2839

Troy tilt rear tine tiller, model 12209 Bronco. Running like new. With original owners manuals: \$1000. William Coleman **Monticello** 410-830-9799

## LANDSCAPE TOOLS AND MATERIALS

2021 Kubota Zero Turn mower 54-inch cut 19.3HP. Diesel engine 79hrs. Shaft drive commercial deck. One belt. Like new, one owner: \$8500. Matt Young **Richland** 229-942-2840

Beard-Poulan 361 bow saw. Runs good: \$250. Jeffrey Meeks **Augusta** 706-513-6628

Chipper, Yardman with owner's manual. 8HP, model series 642D thru 648D. Last used in 2024: \$500 OBO. Martha O'Neil **Sugar Hill** 770-271-4166

Dixie Chopper lawn mower, 52in classic, motor has 30hrs. Needs gearbox. Well maintained: \$1200. Mike **Gay** 954-650-6107

DR pull-behind gasoline-powered lawn vac: \$600; pull-behind lawn/turf roller: \$100; pull-behind aerator: \$100. Other items for sale, ask about the package. Pete **Batesville** 706-949-1567

Exmark Lazer Z, S-series, 52in deck, Kawasaki FX801V, 1270hrs: \$6,800. Ricky **Dawsonville** 706-429-4973

Fresh pine straw installed. 20+ years experience: \$5.00-\$6.00/bale, no additional fees, (50) bale minimum. American owned/operated. Serves north metro Atlanta and surrounding areas. Gloria Williamson **Buford** ysrv@hotmail.com 770-912-6671

# FAST GROWING PRIVACY TREES

- Thuja Green Giants, Leyland/Murray Cypress, & other trees/shrubs
- Professional delivery & installation available

Visit our farm in Jasper County to select & pick up your trees!

Forever Green Tree Company, LLC | 770-862-7442

www.ForeverGreenTreeCompany.net

988 SUICIDE & CRISIS LIFELINE

**LANDSCAPE TOOLS AND MATERIALS**

John Deere E 35 walk behind edger: \$300. Fred Granitz Meansville 478-214-3133

John Deere mower Z997R 155hrs, 72-inch cut. Looks new: \$15,000 cash. Ken Dill Mount Airy 706-499-2555

Snapper 11HP riding mower. Runs well, needs minor deck repair: \$85; 5HP limb shredder/grinder: \$80; 6ft boom pole for tractor: \$60. Jon Hughes Braselton 470-248-8835

Snapper rear engine riding mowers (10) complete except engines. Lots of parts/bags. Have other running mowers. Retiring: make offer. J. Mullins Cherokee County 770-595-4987

**FARM SUPPLIES**

**IRRIGATION EQUIPMENT**

Hook and latch aluminum irrigation pipe. 4inX30ft: \$45/each or best offer. Approx 50 pieces. Call. Richard Spooner Iron City 229-254-5617

**TOOLS AND HARDWARE**

2 bow saws for sale. Haven't been cranked in a while: \$150 each. E. Marshall Lizella 478-935-8325

Hickory handles. Tack hammer to sledge hammer, shovel, ax, cant hook, pitch fork, rake, short handled shovel, bush ax. Glenn Campbell Rockmart 770-546-5567

Machines Rockwell table saw: \$900; Delta radial arm saw: \$300; Powermatic scroll saw: \$400; Keller power hack-saw: \$200. Fred Haney Ellijay 678-234-3455

Woodworking tools for sale – table saw, radial arm saw, wide belt sander, shaper. All three-phase, most Powermatic. Call for pricing. Good deal if you take all. Debra Maysville 706-654-8591

**BUILDINGS AND MATERIALS**

(1) new interior door unit, 2-6 RH, raised 6-panel stain grade solid pine. New, never used, complete with jam and frame: \$150. Please leave message. Mark Welch Blairsville 770-605-0324

14 chicken houses to be demoed. (8) 40x450 w/wood trusses, 4 good tin, 4 rusted; (6) 42x500 w/metal trusses & good tin. Taking orders or turnkey demo photos on request. Jerry Jasper 864-918-3633

3 ea unused C beams, 27ft long, 8in on front, 8in on back: \$150/ea; 4 ea unused 4x4in 1/4in steel posts, 20ft long. Sam Wood Morrow 678-758-7887

40 pieces of 12ft used 5V 29-gauge tin (not rusted). Also available: 12ft, 9ft, and 8ft rusty tin: \$1 per foot, negotiable if taking all. G. Williams Maysville 706-499-5391

500 red and black bricks; 5 4x4x16 pressure treated boards, it would be good for a deer stand. Terry Mikle Snelville 770-979-8981

53ft truck container storage unit w/overhead rolling door: \$2000 cash. You move. Smith Blairsville 727-457-3843

Brand new, never opened 175 watt mercury vapor light: \$50; extra 175 watt clear bulbs: \$10/ea; sensors: \$8/ea. Ronnie Waycross 912-550-9245

Plastic pallets - black, large heavy duty, over-sized, 43.5in (W) x 55in (L) x 6in (H). Good condition, durable: \$16/ea. Alexander Brooks 678-723-9265

**LUMBER**

Band-sawn lumber. Pine or hardwood, siding or framing and beams, oak trailer decking or blocking, T&G shiplap. Text or call. Larry Moore Grantville 678-278-5709

Sawmill lumber. Rough, finished, kiln-dried, air-dried or green. Pine, red/white oak, poplar, cherry, black walnut, slabs available for counter tops. Can cut up to 24ft. Ask about half off special. Andy Adams Hartwell 706-376-8968

Seasoned rough cut mixes, 1inX6, 8, 10 & 12ft long. Charlie Carroll County 770-841-5887

We stock kiln dried lumber, t&g, shiplap, rough cut lumber and beams, cabinet grade plywoods, siding, and other building materials. Boutwell Lumber and Firewood Thomson 706-699-2067

Wood-Mizer custom-cut lumber, milled, air-dried, restorations, timber frames, flooring, barns, fencing, tables, mantles, live-edge, reclaimed lumber, and trailer flooring. John Sell Milner 770-480-2326 sellj@bellsouth.net www.sell-andassociatesinc.com

**POSTS AND FENCING**

11 Round pen gates: \$85/ea. John Jackson 404-316-4315

16 fence posts cut lengths are 7-8 ft long, and 6-10 inches diameter: priced to move, call for details. Ronald Folk Jeff Davis County 912-209-0526

**FARM ANIMALS**

Livestock listed must be for specific animals. Ads for free or unwanted livestock will not be published. All animals offered for sale in the Market Bulletin must be healthy and apparently free of any contagious, infectious or communicable disease. Out-of-state animals offered for sale in the Market Bulletin must meet all Interstate Animal Health Movement Requirements, including appropriate testing for the species and a current official Certificate of Veterinary Inspection or NPIP 9-3 for poultry. Individuals may sell their own animals; however, livestock dealers are required to have a Livestock Dealer License from GDA. For more information, please call the GDA Livestock and Poultry Division at 404.656.3665.

**CATTLE**

(7) Purebred red Angus bulls, breeding age, 18 months. Hubert Lewis Buchanan 770-883-6004

13 Reg'd Charolais heifers and 9 reg'd Charolais bulls for sale. Franklin Cartersville 678-520-0026

2 Reg'd 2yr old Polled Hereford bulls for sale. Call. Jordan Tunnell Hill 678-988-5683, 678-520-0026

2 year+ black Angus bulls ready for service: \$2850 each. Please leave a message. Rodney Brooks Glenwood 912-423-0389

**Livestock Sales and Events Calendar**

**APPLING COUNTY**

1<sup>st</sup> & 3<sup>rd</sup> Saturdays, 12:30 p.m. at the Baxley Fairgrounds Goats, sheep, feeder pigs, hogs, calves, poultry and rabbits; A&A Goat Sales, 187 Industrial Drive, Baxley. Call Allen Ahl, 912.590.2096

**ATKINSON COUNTY**

2<sup>nd</sup> & 4<sup>th</sup> Saturdays, 12:30 p.m. Goats, Sheep, Chickens, other livestock; Pearson Livestock, 1168 Hwy 441 N, Pearson. Call Jorge Caycay 912-253-1247

**BEN HILL COUNTY**

Every Monday, 1 p.m.: Cattle; South Central Livestock, 146 Broad Road, Fitzgerald. Call Thomas Stripling, 229.423.4400 or 229.423.4436

**BLECKLEY COUNTY**

2<sup>nd</sup> & 4<sup>th</sup> Saturday, 1 p.m.: Goats, sheep, calves, rabbits, poultry. Every Saturday miscellaneous at 10 a.m. Col. Wayne's Auction Co., Bleckley County Barn, 293 Ash St., Cochran. Call Wayne Chambley, 678.544.3105. Lic# AU004496

**BUTTS COUNTY**

Every Wednesday, 12:30 p.m.: Beef cattle; 2<sup>nd</sup> & 4<sup>th</sup> Wednesdays, 11:30 a.m.: Dairy cattle; Jackson Regional Stockyard, 467 Fairfield Church Road/Hwy. 16 W, Jackson. Call Barry Robinson, 770.775.7314

**CARROLL COUNTY**

Every Monday, noon: Cattle, goats, sheep; Carroll County Livestock Sales Barn, 225 Salebarn Road, Carrollton. Call Eric Thompson, 678.372.3776

**CLARKE COUNTY**

Every Wednesday, 11 a.m.: Goats and sheep; noon, cattle. Northeast Georgia Livestock, 1200 Winterville Road, Athens. Call Todd Stephens, 706.549.4790

**COLQUITT COUNTY**

Every Wednesday, 1 p.m.: Cattle; Moultrie Livestock Co., 1200 1<sup>st</sup> Street N.E., Moultrie. Call Randy Bannister, 229.985.1019

**COOK COUNTY**

1<sup>st</sup> & 3<sup>rd</sup> Saturdays, 1 p.m.: Cows, goats, sheep, chickens, small animals; Deer Run Auction, 1158 Parrish Road, Adel. Call Matthew Culpepper, 229.560.0595

**DECATUR COUNTY**

2<sup>nd</sup> Saturdays, 1 p.m.: Goats, sheep, chickens, small animals; Waddell Auction Co., 979 Old Pelham Road, Climax. Call John Waddell, 229.246.4955

**EMANUEL COUNTY**

Every Tuesday, 12:30 p.m.: Cattle; Southern Livestock, 131 Old Hwy 46, Oak Park. Call Clay Floyd, Dustin Miller and Cody Copelan, 912.578.3263.

2<sup>nd</sup> & 4<sup>th</sup> Saturdays, noon:

Goats, sheep, chickens, small animals; R&R Goat & Livestock Auction, 560 GA Hwy. 56 N, Swainsboro. Call Ron & Karen Claxton, 478.455.4765

**FRANKLIN COUNTY**

Every Tuesday, noon: Cattle, goats, sheep; Franklin County Livestock Sales, 6461 Stone Bridge Road, Carnesville. Call Chad Ellison, 706.384.2975 or 706.384.2105

Saturday May 3, 2025, 10 a.m.:

Kubota M9540, MF 240, implements, gates, trucks, trailers and more; 1027 Sam Bruce Road, Royston. Sam Williamson GAL2585, www.SamWillAuction.com.

**GORDON COUNTY**

Every Tuesday, 9:30 a.m. and 12:30 p.m.: Sheep and goats at 9:30 a.m., Cattle at 12:30 p.m.; Calhoun Stockyard Hwy. 53, 2270 Rome Road SW, Calhoun. Call Gene Williams & Adam Williams, 706.629.1900

**GREENE COUNTY**

Every Monday, noon: Cattle, goats, sheep; Duvall Livestock Market, 101 Apalachee Ave., Greensboro. Call Jim Malcom, 706.342.5655; JD Hidgon, 706.817.6829; or main office, 706.453.7368

**JEFF DAVIS COUNTY**

1<sup>st</sup> Fridays: Horse sale, 7:30 p.m.; Circle Double S, 102 Lumber City Highway, Hazlehurst. Call Steve Underwood, 912.594.6200 (night) or 912.375.5543 (day)

**LAMAR COUNTY**

Every Friday, 6 p.m.: Goats, sheep, chickens, small animals; 5 p.m., farm miscellaneous, Ga. Lic. #4213; Buggy Town Auction Market, 1315 Highway 341 S, Barnesville. Call Krystal Burnett 678.972.4599

**LAURENS COUNTY**

2<sup>nd</sup> & 4<sup>th</sup> Thursday, 6 p.m.: Goats, sheep, chickens, small animals; Horse Creek Auction Co., 5971 Hwy. 441 S, Dublin. Call Daniel Harelson, 478.595.5418

**MARION COUNTY**

1<sup>st</sup> & 3<sup>rd</sup> Thursdays, 7 p.m.: Goats, sheep, chickens, small animals; Auction 41, 4275 GA Hwy. 41 N, Buena Vista. Call Jim Rush, 706.326.3549. Email rushfam4275@windstream.net

**PULASKI COUNTY**

Every Tuesday, 1:30 p.m.: Cattle, goats, sheep; Pulaski County Stockyard, 1 Houston Street, Hawkinsville. Call John Walker, 478.892.9071

**SEMINOLE COUNTY**

Every Wednesday, 1:30 p.m., 3<sup>rd</sup> Saturday Special Sale, 1:30 p.m.: Cattle, goats, sheep; Seminole Livestock Exchange, 5061 Hwy. 91, Donaldsonville. Call Luke Spooner, 229.524.2305

**STEPHENS COUNTY**

2<sup>nd</sup> Saturdays, 5 p.m.: W&W Livestock, Eastanollee Livestock Auction, Eastanollee. Call Brad Wood, 864.903.0296

3<sup>rd</sup> Saturdays, noon:

Goats, sheep; Agri Auction Sales at Eastanollee Livestock Market, Highway 17 between Toccoa and Lavonia. Call Ricky Chatham, 706.491.2812 or Jason Wilson, 706.491.8840

Every Monday, noon:

Cattle, goats, sheep; Eastanollee Livestock, 40 Cattle Drive, Eastanollee. Call Mark Smith, 706.779.5944

**SUMTER COUNTY**

Every Monday, 1 p.m.: Cattle; Sumter County Stockyard, 505 Southerfield Road, Americus. Call Aaron and Anna White, 229.380.4901 or 864.704.2487

**TAYLOR COUNTY**

1<sup>st</sup> & 3<sup>rd</sup> Saturdays, 6:30 p.m.: Feeder pigs, goats, sheep, chickens, small animals. Receiving: 8 a.m.; Animals sale 2 p.m. Taylor County Livestock Auction, 1357 Tommy Purvis Jr. Road, Reynolds. Call 678.914.7333

**THOMAS COUNTY**

Every Tuesday, 1 p.m.: Cattle. Thomas County Stockyards, 20975 Hwy. 19 N, Thomasville. Call Danny Burkhardt, 229.228.6960

**TOOMBS COUNTY**

1<sup>st</sup> & 3<sup>rd</sup> Saturdays, 11 a.m.: Feeder pigs, goats, sheep, chickens, small animals; Metter Livestock Auction, 621 Hwy. 1 S, Lyons. Call Lewie Fortner, 478.553.6066

**TURNER COUNTY**

Every Wednesday, 1 p.m.: Cattle; Turner County Stockyards, 1315 Hwy. 41 S, Ashburn. Call Alan Wiggins, 229.567.3371

**UPSON COUNTY**

Every Tuesday, 12 p.m.: Cattle, goats, sheep, horses. Upson County Livestock, 2626 Yatesville Hwy., Thomaston. Call Aaron and Anna White, 864.704.2487 or 770.713.5045

**WILKES COUNTY**

Every Tuesday, noon: Cattle, goats, sheep; Wilkes County Stockyard, Hwy. 78 Bypass/302 Third Street, Washington. Call Josh Saggus, J.F. Hansford, Mason Cronic and Walker Moore, 706.678.2632

Notices for auctions selling farm-related items other than livestock must be accompanied by the auction license number of the principal auctioneer or auction firm conducting the auction, per regulations from the Georgia Secretary of State. Auctions without this information will not be published. Have an auction to put on our calendar? Contact Jay Jones at 404.656.3722 or jay.jones@agr.georgia.gov.



5 year old Bradford bull for sale: \$3500. Calves on site. Chip Radebaugh 772-828-0620

6 well balanced five to six month old replacement heifers 3/4 Angus 1/4 Braunvieh. Can send pictures. Josh Cantrell Carnesville 706-969-0879

8 registered red Angus and black Angus heifers, 21-23 months old. Excellent EPDs: \$2950 and up. Web: gibson-cattle.com. Joe Gibson Rome 706-506-3026



Adams Ranch Braford bull, 7 years old. Fresh breeding soundness exam. Solid bull, have used on heifers. Easy handling: \$4250. White Creek Cattle Thomson 706-595-0520

Akaushi cattle, red pure blood. 8 cows, 3 calves, already, 8 heifers, bulls. Easy calving, good meat quality, heat tolerant, excellent breeders. Roy Strickland Villa Rica 404-975-8200

Jersey bull calves for sale: one born 11/15/2024 to registered parents \$1000, one born 2/27/2025 \$600, one born 3/08/2025 \$500. All dams are on the farm. Andrew Aldridge Tennille 817-207-8733



Beautiful black Angus bulls for sale, starting at: \$2000. Purebred, virgin, low birth weight and ready to breed. They come from registered lineage. Daniel Divide Cattle, Al Daniel Thomaston 478-297-8627

Reg'd black Angus bulls, 18-30m/o, BSE/DNA tested, top EPDs. AI sired by Veracious, Top Cut, Foretold, Hometown. McMichael Angus Farm, Ken Monticello 706-819-9295

Reg'd red Angus bulls, 14 mouths old, low birth. Good ww and yw, ready for work. Flying W Farm Cochran 478-934-6998 or 478-951-3312

Reg'd polled Hereford bulls – rugged, pasture raised, gentle exc bloodlines & EPDs, small calves, exc growth, western genetics, Ga bred. Bobby Brantley Tennille 478-553-8598

Registered gray Brahman bull. Good breeding bull, gray w/black and red markings. Very gentle. Approx 3-4 years old: \$3000. Roger Patterson Dahlonga 706-973-9196

Registered Holstein heifers for sale. Deborah Smith Clermont 770-560-2813 or 770-560-2814

Very nice Hereford show heifer prospect. JW 1857 Merit daughter. Born 11/18/24. Tim Parks Ellijay 706-635-2531



# Bulletin Calendar

## April 17

Flavor of Georgia Reception  
The Classic Center  
300 N. Thomas St.  
Athens, GA 30601  
706.542.0272  
jah56214@uga.edu  
<https://bit.ly/4iu8FXW>

## April 18

Georgia Aquaculture Conference  
Georgia Center for Continuing Ed  
1197 South Lumpkin St  
Athens, Ga. 30602  
706.542.8849  
mrise@uga.edu  
<https://bit.ly/3DqFNjF>

## April 18-19

25th Annual Cobb Master  
Gardener Plant Sale and Expo  
Jim Miller Park Covered Arena  
700 Callaway Rd, S.W.  
Marietta, Ga 30008  
404.307.0583  
mgvocc.comms@gmail.com  
[www.cobbmastergardeners.com](http://www.cobbmastergardeners.com)

## April 19

Georgia Craft Brewers Festival  
111 Elm St  
Woodstock, Ga. 30188  
info@georgiacraftbrewersguild.org  
<https://bit.ly/4ivmjv>

## Native Plant Sale

Georgia Native Plant Society  
West Georgia Chapter  
Carroll County Ag Center  
900 Newnan Rd  
Carrollton, Ga. 30117  
info\_westgeorgia@gnps.org  
[www.wgawildflowers.org](http://www.wgawildflowers.org)

## April 23-25

97th Georgia FFA State Convention  
Macon Coliseum and Convention  
Center  
200 Coliseum Dr  
Macon, Ga. 31217  
706.552.4456  
[www.georgiaffa.org/conferences](http://www.georgiaffa.org/conferences)

## April 24-26

Annual plant sale  
Vegetables, perennials, annuals,  
herbs and more  
Garden Buddies Garden Club  
1210 Hill City Rd  
Sugar Valley, Ga. 30746  
470-398-9863

## April 24-27

Vidalia Onion Festival  
Downtown Vidalia  
Vidalia Convention & Visitors  
Bureau  
912.538.8687  
vidaliaonionfestival.com

## April 24-25

FFA Career & Trade Show  
Georgia FFA Association  
Macon Centreplex  
200 Coliseum Dr  
Macon, Ga. 31217  
770.786.6926  
nmccracken@gaaged.org  
<https://bit.ly/3OAViYR>

## April 25-26

Sacred Heart Garden Festival  
Sacred Heart Cultural Center  
1301 Greene Street  
Augusta, GA 30901  
706.826.4700  
denise@sacredheartaugusta.org  
[www.sacredheartaugustaga.org](http://www.sacredheartaugustaga.org)

## April 26-27

GHF/Massey Ferguson Dressage  
at the Horse Park  
Good Horseman Foundation  
Georgia International Horse Park  
1996 Centennial Olympic Pkwy N.E.  
Conyers, Ga 30013  
404.289.9328  
[www.goodhorseman.org](http://www.goodhorseman.org)

## April 26

JamborBEE Spring Event  
Georgia Beekeepers Association  
Conference  
The Barn at Acorn Ridge  
610 Old Toombsboro Rd  
Toombsboro, Ga. 31090  
[www.gabeekeeping.com](http://www.gabeekeeping.com)

## Blue Ridge Trout and Outdoor

Adventures Festival  
Downtown City Park  
781 E. Main St.  
Blue Ridge, Ga. 30513  
706.838.5259  
[blueridgetroutfest.com](http://blueridgetroutfest.com)

## Annual Plant Sale and Garden

Clinic  
Fayette County Master Gardeners  
Fayette County Education Garden  
810 Heritage Pkwy  
Fayetteville, Ga. 30214  
(near the Fayette County Library)  
770.305.5412  
KimToal@uga.edu  
<https://bit.ly/41SO09W>

Spring Plant Sale  
Athens Area Master Gardeners  
Athens-Clarke County Extension  
Office  
275 Cleveland Rd  
Bogart, Ga. 30622  
706.613.3640  
<https://bit.ly/4bMc4OV>

## Annual Plant Sale

Gwinnett County Master Gardeners  
4817 Church St., N.E.  
Lilburn, Ga. 30047  
678.377.4010  
gwinnettgardener@gmail.com  
[www.gwinnettmastergardeners.com](http://www.gwinnettmastergardeners.com)

## Biennial Plant Sale

Sope Creek Garden Club  
Temple Kol Emeth  
1415 Old Canton Rd  
Marietta, Ga. 30062  
Facebook: sopecreekgardenclub

## April 26-27

Smyrna Jonquil Festival  
The Village Green  
Georgia Grown on site  
200 Village Green Cir, S.E.  
Smyrna, Ga. 30080  
770.423.1330  
[travelcobb.org/event/spring-jonquil-festival/](http://travelcobb.org/event/spring-jonquil-festival/)

## April 26-27

Open Horse Show  
Newton County Saddle Club  
1996 Centennial Olympic Pkwy  
N.E.  
Conyers, Ga. 30013  
678.873.3019  
[www.newtoncountysaddleclub.com](http://www.newtoncountysaddleclub.com)

## May 1

Commerce Beekeepers Club  
Bee Nutrition and Local Plants  
Commerce Public Library  
1344 S. Broad St  
Commerce, Ga. 30529  
<https://commercebeeclub.com>  
Facebook:  
commercebeekeepersclub

## Green Partnerships: Unlocking the

Secrets of Companion Planting  
UGA Extension Gwinnett County  
ONLINE WEBINAR  
Register at <https://bit.ly/3Eg2Duu>  
678.377.4026  
lisa.klein@gwinnettcountry.com

Agribusiness Classic Clay Shoot  
Meadows Clay Sports  
1064 Rumble Rd  
Forsyth, Ga. 31029  
706.336.6830  
rmcdowell@ga-agribusiness.org  
ga-agribusiness.org

## May 2-4

C&G Antique Tractor Museum  
Annual  
Cleveland & Georgia Carter  
5279 Hwy 144  
Baxley, Ga. 31513  
912.571.1387 or  
904.613.1722  
Facebook: C&G Antique Tractor  
Museum

## May 3

Awesome Blossom Festival/Arts  
& Crafts  
Bethel Methodist Church  
245 Fairview Rd  
Stockbridge, Ga. 30281  
absponsor@bethelmethodist.  
church  
awesomeblossomfestival.com

## Native Plant Sale

Georgia Native Plant Society  
Athens-East Piedmont Chapter  
550 Athens Rd  
Winterville, Ga. 30683  
Facebook: AthensGNPS

## May 7

Category 41 Mosquito Control  
Pesticide Training  
UGA Extension Henry County  
97 Lake Dow Rd  
McDonough, Ga. 30252  
Register at <https://tinyurl.com/2f7app9c>  
700.288.8421  
tdaly@uga.edu

Have an event to put on our  
calendar? Contact Jay Jones at  
404.656.3722 or [jay.jones@agr.georgia.gov](mailto:jay.jones@agr.georgia.gov)

We accept calendar  
submissions for food, craft and  
agriculture festivals and events.  
Submissions for festivals that do  
not specifically promote those  
industries will not be printed.

Additional pesticide  
recertification training notices  
are available on the department  
website under the Plant Industry  
Division tab.

(2) one-year-old Savanna  
bucks, one percentage and  
one full-blood. Can register ei-  
ther one with Pedigree Interna-  
tional. Can send pictures. Call  
or text. Isaac Roper **Hartwell**  
706-391-0429

(6) gorgeous Nigerian Dwarf  
goats available. Born 1/2025.  
(5) Doelings Blk/Wht w/ Moon  
Spots, Chocolate w/ Wht  
Splashes. (1) Buckling  
Brown/Blk w/ Moon Spots.  
Slatespringfarm.com Leslie  
**Fairmont** 770-845-9472

100% New Zealand Kiko  
bucklings for sale: \$150-\$250.  
All intact and will be weaned  
early April. One bottle fed  
buckling. Gregory Slappay  
**Carrollton** 678-773-4093  
oakgrovekikos@gmail.com

Full-blooded Boer bucks.  
Dapples and Black solid, 8  
months to 1 years old: \$250-  
\$400. Call or text. Can send  
photos. Steve Gore **Tal-  
lapoosa** 470-241-0483

Goats for sale \$100 each.  
Small males. John Cross  
**Jackson** 404-316-4315

Goats Southeast Spanish  
100% predominately Low  
Country Forage Fed. Also Her-  
itage Breed Turkeys, Kanga  
Livestock guardian dogs Pea-  
cock Hill Farm **Stockbridge**  
770-860-8989

Herd reduction. Nigerian  
Dwarf - 3 females, 1 male;  
Pygmy/ND - 2 females, 1  
(wether) male: price nego-  
tiable for some or all. Text for  
photos. Jason Browning  
**Washington** 704-451-6397

Kiko buck, 4 years old, regis-  
tered 100% NZ: \$400. Going  
out of business. Other goats  
and equipment for sale. Wayne  
Forshee **Reynolds** 678-416-  
9257

Mini Nubians three months  
old. Three females: \$250 each  
and one male: \$200. N. Green  
**Pine Mountain** 706-594-6431



Miniature Silky Fainting &  
Miniature Myotonic Fainting  
goats. All goats are regis-  
tered and micro-chipped.  
Have several breeder buck-  
lings and doelings available.  
Health guaranteed reference.  
Billy 706-343-7425 Rob 706-  
248-5528 **Comer**

Nubian x goats, all ages.  
Starting at \$80. Call for more  
info. Joese Gonzalez **Mc-  
Donough** 678-898-5555

Red male boar sire for sale.  
Throws dappled, babies on  
farm: \$300; Female sheep, 3  
years old for sale for food:  
\$300. Call and leave message.  
Suzanne Kuykendall **Acworth**  
770-241-5027

Reg'd 100% New Zealand  
Kiko buck, born February  
2025, colored, #R274: \$300.  
Bryan Maw **Tifton** 229-382-  
6832

Registrable ND bucklings  
born December 2024 and  
ready for their new farm. Text  
or call. Located in Cherokee  
County. Ashley Mize **Canton**  
[www.aefarms.org](http://www.aefarms.org) 404-465-  
1682

Savanna goats. 7/8% billies  
and nannies, full blood billies  
and nannies, some 3/4% bred  
nannies. Bruce **Lincolnton**  
706-401-0799

Spanish Billy Goat, 4 years  
old: \$400. Please call or text  
for info. Can send pictures.  
Ronny Whitmire **Elberton** 706-  
680-4354

Two polled (no horns) Nigeri-  
an Dwarf billies for sale: \$150  
each. Can send pictures upon  
request. Larry R. Pirkle **Daw-  
sonville** 706-216-2954

## SHEEP

14 Registered Katahdin  
ewes. Nationally acclaimed ge-  
netics. All under 3 years old:  
\$500/ea. Great starter flock.  
Mike Jones **West Point** 706-  
773-3612

2 ewes, 1y/o. Katahdin and  
the other a Katahdin Painted  
Desert cross. A ram, appr 6-7  
months old: \$900 for all. Text  
for photos. Aline Bennett  
**Auburn** 678-227-9535

Beautiful Dorper/StCroix mix  
lambs. born Jan 1: \$200-250.  
Larry Priest **Monroe** 770-630-  
7982 or 770-601-1743

Dorset and Hampshire lambs  
available born late January:  
\$200-250; Hampshire ram also  
available: \$400. Casey Artman  
**Rutledge** 770-356-5639 or  
404-643-7926

Katahdin lambs and sheep for  
sale. Bruce Billue **McIntyre**  
478-979-0138

Katahdin sheep, foot rot free.  
Ewes w/lambs by their side, 4  
sets triplets and 6 ewes  
w/twins. Owner retiring, health  
reasons. Send text or call.  
Scott **Sautee Nacoochee**  
404-310-2558

Katahdin/Dorper cross ewes.  
18m/o w/single lamb; 2y/o  
w/twin lambs; 3-4y/o ewe.  
Katie Hufford **Cleveland** 706-  
348-5187

Purebred and crossbred  
Katahdin ewe and ram lambs.  
Born Feb/Mar. Breeding and  
meat: \$200-\$300. M Lichty  
**Luthersville** 770-833-5159

## STOCK DOGS

Ads in this category are limited  
to breeds recognized by the  
American Kennel Club as  
herding and/or working dogs  
(in an agricultural context). Ads  
for breeds that do not meet  
those definitions will not be  
published.

Advertisers must submit a copy  
of a current Rabies Vaccination  
Certificate signed by a licensed  
veterinarian for dogs 12 weeks  
and older and include the ages  
of all dogs being advertised.  
Ads submitted without this  
information will not be  
published.



3 Male 8wk Anatolian/Pyre-  
nees. UTD on vaccines, par-  
ents on site. Raised on my  
farm w/chickens & goats. June  
Lott **Monroe** 770-207-9962

8 beautiful Aussie puppies for  
sale. Brown and brown and  
white. Allen Stribling **Lincol-  
nton** 706-401-4565

AKC Bernese Mountain pup-  
pies, born 03/01/2025: \$1500.  
William Yoder **Montezuma**  
229-389-1870

## SWINE

Advertisers submitting swine  
ads must submit proof of a  
negative brucellosis and pseu-  
dorabies test from within the  
past 30 days. Exceptions are  
swine from a validated bruce-  
llosis-free herd and/or qualified  
pseudorabies-free herd; these  
operations must submit proof  
of those certifications. Buyers  
are urged to request proof of a  
negative brucellosis pseudora-  
bies test prior to purchase.  
Feral hogs may not be offered  
for sale or advertised in the  
*Market Bulletin*.

3 Berkshire piglets for sale, 9  
weeks old: \$50/ea. Janet Pol-  
son **Midville** 706-871-7510

## GOATS

All goats offered for sale must  
be individually identified in  
compliance with the USDA  
Scrapie Program. For more in-  
formation, please call the GDA  
Animal Health Division at  
404.656.3667.

(2) 9 month old wethers: \$120  
each; 6 month old Billy goat:  
\$150. All are very friendly and  
are dewormed. Call or text.  
Rance McWhorter **Carrollton**  
770-301-5912

# Help the Honey Bee



License plates available now

[gabeeplate.com](http://gabeeplate.com)

**STOCK DOGS**

Ads in this category are limited to breeds recognized by the American Kennel Club as herding and/or working dogs (in an agricultural context). Ads for breeds that do not meet those definitions will not be published.

Advertisers must submit a copy of a current Rabies Vaccination Certificate signed by a licensed veterinarian for dogs 12 weeks and older and include the ages of all dogs being advertised. Ads submitted without this information will not be published.

Kangal livestock guardian puppies, registered: \$2500. Will breed her when I have enough deposits; 100% Southeast Spanish goats predominately Low Country, heritage breed turkeys.. Peacock Hill Farm **Stockbridge** 770-860-8989

Pure breed Anatolian puppies for sale. Eight weeks old, ready to go now. Raised with sheep, goats, and cattle. Mom and dad on premises. Call/text. Scott Hogan **Nashville** 229-237-4663

**BARN CATS**



Barn cats available for rodent control. Shelter rescues, fixed, vaccinated and delivered at no cost. You provide food, water, shelter. Text/email. Linda **Oconee County** 706-343-8173 barncatsgeorgia@gmail.com



Barn cats available. Neutered & vaccinated, no fee to adopt, transportation is available. Please include your location and phone number. Elizabeth **Duluth** ferals@pethoodga.org

Floyd Felines has barn cats in NW GA at no cost to you. Cats are neutered/vaccinated. Must provide daily food, water. Email/text. Floyd Felines, Angie **Rome** spayfloydfelines@gmail.com 706-512-7004

**RABBITS**

Flemish Giant kits. Will be ready one week before Easter, April 13. Black, gray, and sandy. Tiffany Tilley **Fortson** 706-326-9098

New Zealand and Black Silver Fox bunnies from top meat and fur producing rabbits. 3 unrelated litters from pedigree bloodlines. J. Porter **Bostwick** 706-380-7222

Pure silver fox and pure New Zealand (Black Doe x Silver Agouti Buck) available 4/27=8 weeks and available now NZ/SF-4/16=13 weeks Fat healthy gentle V Square Farm **Colbert** 706-621-332

Standard Rex rabbits are the perfect choice. Known for their fast growth, tender meat, luxurious fur, They are a must-have for any homesteader. Call or text. Starla Allen **Mitchell** 706-466-4590

**POULTRY/FOWL**

Any person engaged in buying live poultry of any kind for resale, or in selling live poultry of any kind bought for resale, must be licensed by the GDA. Possessing such a license does not by itself disqualify an individual from advertising poultry in the *Market Bulletin*. Mallard ducks must be at least three generations from the wild before they can be advertised in the *Market Bulletin*. Advertisers must include this information in notices submitted for publication. Out-of-state poultry must have a negative Avian Influenza test and negative pulorum test within 21 days of entering Georgia. For more information, call the GDA Livestock and Poultry Division, 404.656.3665.

1 rooster, 1.5 years old, Australorp breed, 13lbs, 1.5 feet tall. Black with some green feathers. Call Hosanna. T.M. Ewing Farm **Covington** 404-519-4981

2024 hatch peafowl. India Blue cock, Black Shoulder cross hen: \$50 each; 2024 hatched White Bearded silkies: \$25 a pair. Bill Turner **Ball Ground** 404-713-8053

4 year old Indian Blue male peacock for sale. Tim Brooks **Maysville** 706-983-0457

Bourbon Red, Black, Blue Slate, Narragansett turkey hatching eggs, poults. Ameraucana, BCM, Delaware, Australorp, Welsummer, RIR, NHR, Barred Rock, Buff Orpington, Olive Egger chicks, hatching eggs. Daniel **Pine Mountain** 678-687-6746

Ducklings and adults. Magpie, Cayuga and Run; also Pr IB peacock. Call or text. Mary **Newborn** 770-919-7759

Ducklings – Muscovy & Crested. All handled from hatch. Linda **Senoia** 770-599-9062

Goslings - Pomeranian Saddle, Buff, & others. All handled from hatch; also available hatching eggs. Linda **Senoia** 770-599-9062

Guinea for sale, laying pairs: \$35/pr. James Causey **Dawson** 229-395-6300

Guineas and Muscovys (multi colors) available. Approximately 1 year old. Call or text. David Hillebrand **Greenville** 678-799-0648

Heritage Breed Turkeys. Also GOATS 100% South East Spanish Goats predominately Low Country Forage Fed. Kangal Livestock guardian dogs. Peacock Hill Farm **Stockbridge** 770-860-8989

Leiper Hatch stags, 10 mos: \$75/ea. Greg Watson **Watkinsville** 706-202-2909

Peacocks. 4 males: \$50 each. Hatched 11/2025. Mostly blue but some green mix. Steve Brown **Thomaston** 706-975-9234 steve1413@charter.net

Pigeons - white homers, white rollers, turner rollers & colored rollers: \$22/pair. Wyatt Johnson **Midville** 478-494-3240

# Spring Vegetable Planting Chart

Vegetable	Days to Maturity	Planting Dates	Seeds/Plants per 100 ft.	Spacing Rows per plants	Depth to Plant
Asparagus	2nd year	Jan. 15-Mar. 15	50 roots	36" x 18"-24"	6"
Beans, bush	50-60	Mar. 15-May 1	½ pound	36" x 2"-4"	1"-1 ½"
pole	65-75	Mar. 15-May 10	½ pound	36" x 4"-12"	1"-1 ½"
lima	65-75	Mar. 15-June 1	½ pound	36" x 3"-4"	1"-1 ½"
pole lima	80-85	Mar. 15-June 1	½ pound	36" x 6"-8"	1"-1 ½"
Beets	55-65	Feb. 15-April 1	1 ounce	18"-36" x 2"	½"
Broccoli	60-80	Feb. 15-March 15	100 plants	36" x 12"	————
Butterpea	70	April 1-May 1	½ pound	36" x 3"-4"	1"-1 ½"
Cabbage	70-120	Jan. 15-Mar. 15	100 plants	36" x 12"	————
Cantaloupe	80-90	Mar. 20-June 20	1 ounce	60" x 36"	1"
Carrot	70-95	Jan. 15-March 20	½ ounce	18-36" x 2"-3"	¼"
Cauliflower	60-75	Mar. 1-April 1	100 plants	36" x 12"	————
Collards	55-85	Feb. 1-March 15	½ ounce	36" x 8"-16"	½"
Corn, yellow	65-90	Mar. 15-June 1	¼ pound	36" x 12"-18"	1"-1 ½"
white	65-90	Mar. 15-June 1	¼ pound	36" x 12"-18"	1"-1 ½"
bi-color	65-90	Mar. 15-June 1	¼ pound	36" x 12"-18"	1"-1 ½"
Cucumber:					
slicing	50-65	April 1-May 15	1 ounce	60" x 12"	½"-¾"
pickling	50-65	April 1-May 15	1 ounce	60" x 12"	½"-¾"
gynoecious	50-65	April 1-May 15	1 ounce	60" x 12"	½"-¾"
Eggplant	75-90	April 1-May 15	50 plants	36" x 24"	————
Kale	50-70	Feb. 1-Mar. 10	½ ounce	36" x 8"-16"	½"
Lettuce	60-85	Jan. 15-Mar. 1	¼ ounce	18"-36" x 8-12"	⅛"
Mustard	40-50	Jan. 15-April 1	½ ounce	18"-36" x 2"	½"
Okra	55-65	April 1-June 1	1 ounce	36" x 12"	1"
Onion, green	60-90	Jan. 1-Mar. 15	300 plants	18"-36" x 3"	————
dry bulb	100-120	Jan. 1-Mar. 15	300 plants	18"-36" x 3"-4"	————
Peas:					
garden (English)	60-70	Jan. 15-Feb. 15	1 pound	36" x 2"	1"-2"
edible pod	60-70	Jan. 15-Feb. 15	1 pound	36" x 2"	1"-2"
Southern	60-70	April-Aug. 10	½ pound	36" x 3"-4"	1"-2"
Peppers, bell	65-80	April 1-June 1	50 plants	36" x 24"	————
hot	65-95	April 1-June 1	50 plants	36" x 24"	————
hot-sweet		April 1-June 1	50 plants	36" x 24"	————
Potatoes, Irish	70-90	Jan.15-Mar. 1	12 pounds	36" x 12"	4"-5"
Sweet	90-120	April 15-June 15	100 plants	36" x 12"	————
Pumpkin, tiny	85-120		1 ounce	72" x 48"	1"
pie type	85-120	May 15-July 1	1 ounce	72" x 48"	1"
small	85-120	(Depending on maturity date)	1 ounce	72" x 48"	1"
large	85-120		1 ounce	72" x 48"	1"
giant	85-120		1 ounce	72" x 48"	1"
Radish	25-30	Jan. 15-April 1	1 ounce	24" x 1"	½"
Spinach	40-45	Jan. 15-Mar. 15	1 ounce	18"-36" x 2"	½"-¾"
Squash:					
summer	40-55	April 1-May 15	½ ounce	36" x 24"	1"-2"
(zucchini)					
winter	85-120	April 1-July 1	½ ounce	60" x 36"	1"-2"
Tomato: cherry	70-90	Mar. 25-May 1	50 plants	48" x 24"	————
grape	70-90	Mar. 25-May 1	50 plants	48" x 24"	————
determinate	70-90	Mar. 25-May 1	50 plants	48" x 24"	————
indeterminate	70-90	Mar. 25-May 1	50 plants	48" x 24"	————
Turnip	40-60	Jan. 15-April 1	½ ounce	18"-36" x 2"	½"
Watermelon: lg.	80-90	Mar. 20-May 1	1 ounce	72" x 36-48"	1"-2"
round	80-90	Mar. 20-May 1	1 ounce	72" x 36-48"	————
small	80-90	Mar. 20-May 1	1 ounce	72" x 36-48"	————

Adapted from the University of Georgia Cooperative Extension Service

# ASK THE EXPERT: Avoiding common mistakes in farm loan applications

By Amanda Heitkamp  
Farm Service Agency

The USDA Farm Service Agency (FSA) offers loans to help farmers and ranchers get the financing they need to start, expand or maintain a family farm. Robert White, deputy director for FSA's Loan Making Division, answers questions about the FSA farm loan application process. He and his colleagues address regulatory and policy initiatives and develop IT modernization processes to assist loan applicants nationwide. He grew up on a family farm in Kansas and continues to maintain close ties to production agriculture.

**AH:** What do you recommend as the first steps for someone interested in a FSA farm loan?

**RW:** FSA recently rolled out two new products, which should be of interest to loan applicants. The Loan Assistance Tool (<https://lat.fpac.usda.gov/>) offers a series of online questions, which help the applicant explore FSA direct and guaranteed loan programs, decide what loans may best suit their needs, determine eligibility and documentation requirements, and quickly access loan forms. Any interested applicant is encouraged to begin their search with the Loan Assistance Tool.

After visiting the Loan Assistance Tool site, applicants can apply by completing FSA's new Online Loan Application (<https://ola-fsa.fpac.usda.gov/ola-web/home>). To apply online, they must first sign up for a farmers.gov account. Once an account is established and linked to their profile, direct loan applicants will answer a series of questions and are provided the option to upload required documentation, saving the applicant time and a trip to their local service center.

**AH:** What are the most common errors applicants make when completing farm loan applications?

**RW:** Generally, applicants can improve their chances of receiving a timely loan approval by ensuring their loan application responses are accurate and thorough.

For example, prior to completing a loan application, all applicants should prioritize the development of their business plan. In most states, the Cooperative Extension Service can help with developing a business plan. Many states have additional resources, including FSA Cooperators who applicants can contact for assistance. Applicants needing help with their business plan should contact the local FSA Farm Loan team (see "Find Your Local Service Center" on Farmers.gov) for details on available resources.

Loan applicants can answer application questions about

their business plan online or by using form FSA-2001, where they will be asked to provide a balance sheet and a cash flow projection. They can complete these as part of the application, or they have the option to attach/upload current documents containing the information.

It is very important for applicants to consider their business plan details, as the financial feasibility of the operating plan is the most common reason for a loan denial. Occasionally, an applicant's business plan includes complexities or unique circumstances that are not clear from the balance sheet and cash flow projection provided. They can provide additional supporting information. Applicants can contact their local FSA Farm Loan team to schedule a phone call, virtual meeting, or in-person meeting to clarify the loan request, business plan, or other application matters.

**AH:** Are there particular sections of the form FSA-2001 where errors are frequent?

**RW:** Direct loan applicants should note that form FSA-2001 requires applicants to provide additional information for FSA to determine if the applicant has the training, education, or experience required for the requested loan types and that the applicant meets other loan eligibility or approval requirements. There is an area on form FSA-2001 to provide additional details.

Although the loan applicant is familiar with details associated with their responses, the answers may not be clear to FSA without additional details. To assist FSA in accurately determining eligibility or approval, applicants are encouraged to provide details to responses that may not be clear from the basic answers relating to loan eligibility or approval requirements. For example, to validate an applicant's experience an attachment might be submitted detailing the specific roles and responsibilities they have previously held, or a copy of a degree awarded in a related field.

**AH:** What common misunderstandings do applicants have



Robert White has been with the Farm Service Agency for 40 years, spending most of that time as a farm loan manager in Kansas, with the last three years at the National Office. (FSA/Special Photo)

about loan eligibility criteria?

**RW:** Along with other eligibility and approval requirements, FSA must determine that an applicant has an acceptable credit history demonstrated by debt repayment. FSA does not determine eligibility based on an applicant's credit report score; but rather, FSA examines if any history of failures to repay past debts was within the applicant's control and if those debt repayment issues show a pattern of unsatisfactory or slow payment.

If FSA's credit report or other forms of debt verification show a recent history of foreclosures, judgments, or delinquent payments, FSA will contact the applicant to learn more about these potential credit issues. An applicant can explain any circumstances applicable to these matters. They should provide details if the adverse action or delinquency was caused by circumstances that

were temporary in nature and beyond their control; or the result of a refusal to make full payment because of defective goods or services or other justifiable dispute concerning purchasing or contracting for goods or services.

**AH:** What occurs if the loan application submitted is not complete?

**RW:** Within seven calendar days of receiving an application, FSA will advise the applicant if additional information is required. If the stated additional information is not received following the initial written request, the agency provides notice that the application will be withdrawn if the information is not received within an additional 15 calendar days of the date of the second notice. Complete applications are placed in the queue for processing by the loan official in the order of receipt.

If an application is withdrawn as incomplete, the applicant is encouraged to contact their local FSA office once the remainder of the incomplete items are available. Often, an applicant may simply update the previously withdrawn application and re-sign form FSA-2001 to establish a replacement application.

## NEWS BRIEFS: GFVGA seeks growers input for new market study

The Georgia Fruit and Vegetable Growers Association is seeking growers' input after securing funding to study the development of ingredient and consumer products from non-fresh market quality or surplus watermelon, blueberry, peach and citrus inventories.

Your valuable input through the growers survey, accessible via the QR code, will directly impact the development of new market opportunities. Capturing accurate data at the launch of this project is vital. The market for fresh, domestic juices and purees is significant and growing. This study aims to unlock some of the obstacles and highlight some of the opportunities to equip growers with solid information upon which to plan future business activities designed to add value to what now considered waste, according to the GFVGA's announcement.

You can also access the survey using the link: <https://bit.ly/4cBXJVT>.



For more information, please contact GFVGA at 706-845-8200.

### Athens Area Master Gardeners to hold Plant Sale

The Athens Area Master Gardener Association will hold its annual Spring Plant Sale on Saturday, April 26, at the Athens-Clarke County Extension Office in Bogart.

The sale will be held from 8 a.m. to 2 p.m. at the Extension Office at 275 Cleveland Road, Bogart. Plants are from the Master Gardeners' gardens and include a great selection of herbs, vegetable plants, annuals, perennials, trees, shrubs, ferns, ground covers, seedlings, and bulbs.

The sale will be held rain or shine. Cash or checks will be accepted as payments (no charges). Proceeds support the Association's Plant-a-Row for the Hungry Gardens and scholarships for University of Georgia horticulture students.

For more information, call the Athens-Clarke County Extension office at 706-316-3640, or visit the Extension website, or email [uge1059@uga.edu](mailto:uge1059@uga.edu).



## MARKET BULLETIN IN THE FIELD: Pea-king and queen into the patch!

Katrina Davis of the Crooked Branch Farm in Millen shared a photo of her children, Kennedy, 1, and Reddley, 8, in the farm's purple hull pea patch. That is a lot of peas! Share your favorite farm or Ag production photos with us to be published in the *Market Bulletin*. Submit your photo to [marketbulletin@agr.georgia.gov](mailto:marketbulletin@agr.georgia.gov). (Special Photo/Katrina Davis)

### FARMERS & CONSUMERS MARKET BULLETIN (ISSN 0889-5619)

is published biweekly by the Georgia Department of Agriculture  
19 Martin Luther King Jr. Drive  
Atlanta, GA 30334-4250  
404-656-3722 • Fax 404-463-4389  
Office hours 8 a.m. to 4:30 p.m. Monday – Friday

### Tyler Harper, Commissioner MARKET BULLETIN STAFF

Jay Jones, **Editor**  
Nicholas Vassy, **Business Manager**  
Lee Lancaster, **Contributing Writer**

Subscriptions to the Farmers and Consumers Market Bulletin are \$10 per year. To start or renew a subscription, go to our website to pay by Visa or MasterCard, or send a check payable to the Georgia Department of Agriculture along with your name, complete mailing address and phone number to PO Box 742510 Atlanta, GA 30374-2510. Designate "Market Bulletin" in the "for" line. To determine if an existing subscription is due for renewal, look for the expiration date on the mailing address label on page 1. Postmaster: Send address changes to 19 Martin Luther King Jr. Drive, Atlanta, 30334.

The Department does not discriminate on the basis of sex, race, color, national origin, age or disability in the admission or access to, or treatment in, its employment policy, programs or activities. The Department's Administration Division coordinates compliance with the non-discrimination requirements contained in Section 35.107 of the Department of Justice Regulations. Information concerning the provisions of the Americans with Disabilities Act, and the rights provided thereunder, are available from this division. If you require special assistance in utilizing our services, please contact us.

# SOWTH Conference tackles challenges facing southern food systems

By Danny Harper  
Georgia Organics

Over 1,000 food system producers, advocates, and leaders from across the Southern United States and its territories converged at the Georgia World Congress Center in Atlanta for the SOWTH 2025 Conference, aiming to bolster sustainable agriculture and local food movements.

Representatives from 14 Southern states, Puerto Rico, and the Virgin Islands gathered Feb. 4-6 under the conference's theme, "small farms, big community," to exchange tools, resources, and build connections.

SOWTH, or the Southern Organizations Working Toward Healthier food systems, is a network uniting farmers and organizers across the South. It aims to drive collective action for positive change in the region's food system. Formed to address the void left by the 2019 closure of the Southern Sustainable Agriculture Working Group (Southern SAWG), SOWTH continues supporting sustainable agriculture practices and strengthening local food networks.

In total, 1,326 people attended the conference, with one-third being producers (farmers, growers, graziers, bee raisers, pastoralists, fishers, oyster farmers, and everything in between).

SOWTH organizers awarded 153 regional scholarships, providing more opportunities for food system community members to benefit from the conference. The Georgia Organics team and our organizing partners were grateful to receive kind words from many SOWTH attendees — Danielle Adamson of HealthMPowers said, "It was great to see everyone in person and to witness firsthand the dedication and hard work that went into making this conference an unforgettable experience."

The first day of the conference saw attendees journey to various small farms and food centers in Georgia, including Patchwork City Farms, Global Growers Network, Rodgers Greens and Roots, Love is Love Cooperative Farm, Decimal Place Farm, Snapfinger Farm, Chattahoochee Queen & Floribunda Flower Farm, High Hog Farm, Grow Where You



Attendees at the SOWTH Conference in Atlanta toured local farms, gaining practical insights on maximizing production in small spaces, equipment sharing, and pasture-raised hog farming. (SOWTH/Jenna Shea Photojournalism.)

Are, and Fort Valley State University. Tour-goers got up-close explorations of organic livestock production, scaling small farms for wholesale markets and learning how cooperative farm models work.

On day two, SOWTH attendees convened at the Georgia World Congress Center. The day started with breakfast in the Georgia Ballroom, the first of several delicious meals that emphasized SOWTH's small farms, big community focus—more than 50 percent of the food served was locally sourced with the help of our friends at The Common Market.

After the meal and opening remarks from Georgia Organics Executive Director Alexis Chase and SOWTH Steering Committee Chair Brennan Washington of Southern SARE, attendees dispersed throughout the GWCC for the first day of sessions, with each presentation designed around specialized educational tracks, including Farmer Advocacy, Climate Resilience, Farmers Markets, Producer Resources, and Youth Engagement. During sessions, the Expo hall offered more opportunities to connect with the many food-system professionals gathered for the week. Lunch brought everyone back together in the Georgia Ballroom to hear from Farmer Cee Williams, who imparted invaluable knowledge on her

experience as a farmer, businesswoman, and advocate for healthier growing.

SOWTH concluded on day three with the last round of sessions, breakfast and morning plenary with the Women in Southern Agriculture Panel, featuring Sue Beckwith, Tomika Bell, Ira Wallace, Diana Garcia-Padilla, Shirley Sherrod, Leni Sorensen, and Ashely Smith.

For the special lunch plenary, conference attendees got a peek at the first-ever Pollinator's Atlas, a crowd-sourced, interactive tool that helps Southern farmers and producers connect with service providers in their states. Through Project Pollinate, SOWTH participants logged their interactions via a digital Pollinator's Log, allowing our friends and facilitators at Ignited Word to visualize the expanding network in near real time. Participants tracked their connections in printed programs and submitted them digitally, with updates displayed throughout the event. The Pollinator's Log gave a visual representation

of SOWTH's mission to create a strong, collaborative agricultural community and we appreciate everyone's participation in the project!

In the evening, guests gathered for the SOWTH dinner, closing remarks, and presentation of the inaugural SOWTH Awards and many thanks and congratulations to Ira Wallace, co-founder of Acorn Community Farm, home of Southern Exposure Seed Exchange; and Shirley Sherrod, co-founder of New Communities, Inc. Each was recognized with the Ira Wallace Seed Sower Award and Shirley Sherrod Justice in Agriculture Awards named, respectively, in their honors for their years of committed service as local food system advocates. Washington was also recognized for his world-class leadership, advocacy and field work as the inaugural SOWTH Steering Committee Chair.

For more information, visit the conference website at [sowth.org](http://sowth.org). Georgia Organics was the host organization for SOWTH. Learn more about Georgia Organics' programs and resources at [georgiaorganics.org](http://georgiaorganics.org).

*Danny Harper is development and communications manager for Georgia Organics.*

## Georgia Farm Bureau accepting entries for farm dog contest

### Staff Reports

The Georgia Farm Bureau (GFB) is accepting nominations for its 2025 Farm Dog Contest to recognize farm dogs' special role in agriculture.

GFB is accepting entries for the contest until 10:59 p.m. Thursday, May 1, or until 200 entries are received, whichever comes first.

The contest is open to GFB members ages 18 and over. For complete contest rules and the criteria dogs will be judged by, visit [gfb.ag/25farmdogcontest](http://gfb.ag/25farmdogcontest). Judging for the contest will take place in May.

The annual contest recognizes the special role farm dogs play on the farm. "They can serve in a variety of roles, such as herding livestock or guarding livestock and property. Farm dogs also provide companionship and joy to their families. Many dogs make every step their farmers do as they complete their daily chores," according to the GFB press release announcing the contest.

The winning dog and its human will be recognized in October at the 2025 Sunbelt Agricultural Exposition in Moultrie. The grand prize winner will receive a \$500 gift card. Georgia farm dogs have some pretty amazing stories to tell, and GFB is looking forward to telling them, the release added.

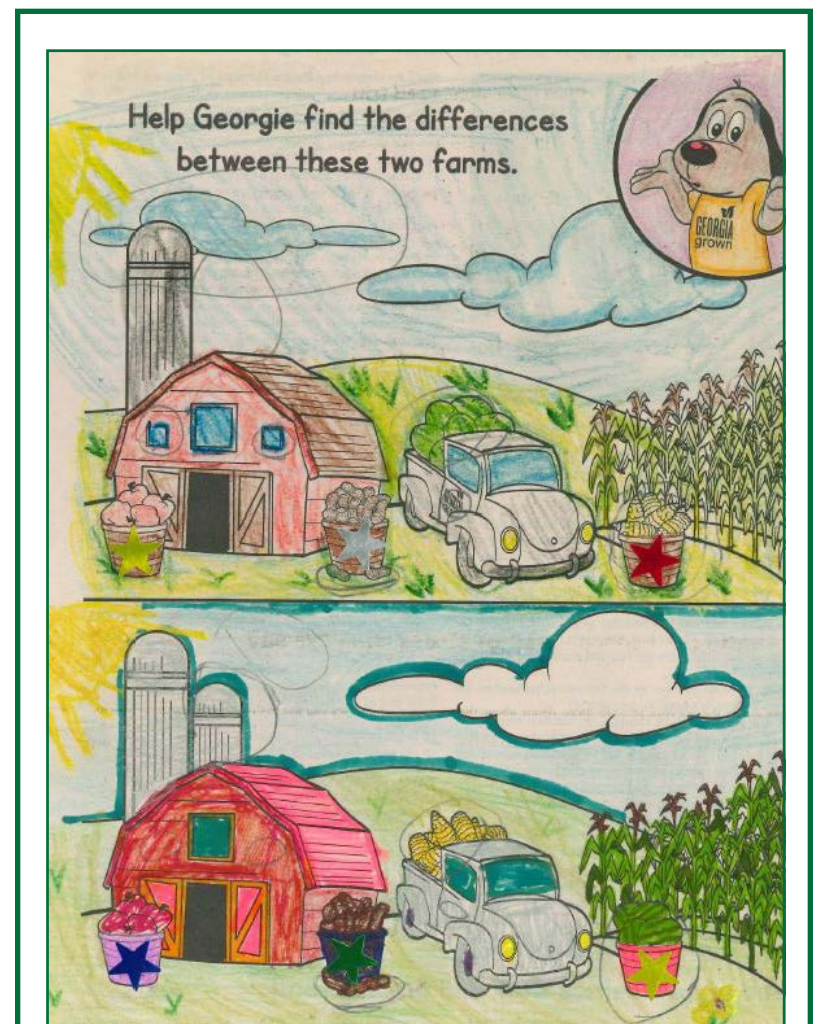
The 2024 winner of GFB's first Georgia Farm Dog Contest was Belue, a Shetland Sheepdog from



Georgia Agriculture Commissioner Tyler Harper, right, poses with Sumter County farmer and Ag teacher Brinson Brock, and his Shetland Sheepdog, Belue at last year's Sunbelt Agricultural Exposition in Moultrie when Belue was named the 2024 Georgia Farm Bureau Dog of the Year. (GDA/Nick Vassy)

Americus. Belue works sheep and cattle for his human, Brinson Brock, and attends the middle school agricultural classes Brock teaches to encourage students' interest in veterinary science.

*Staff reports in the Market Bulletin are submitted by outside organizations concerning agricultural-related topics in Georgia. A submission does not guarantee publication. The editor retains the right to accept and edit submitted articles. Submissions can be sent to [marketbulletin@agr.georgia.gov](mailto:marketbulletin@agr.georgia.gov)*



## Ella's eye for detail!

Ella Gahagan, 7, of Calhoun, learned about the variety of farm products while finding the differences in our farm scene from the April 3, 2024 issue. She noticed the clouds and the different crops in the trucks! Wonderful job, Ella! Send your Fun on the Farm artwork to [marketbulletin@agr.georgia.gov](mailto:marketbulletin@agr.georgia.gov).

**POULTRY/FOWL**

Any person engaged in buying live poultry of any kind for resale, or in selling live poultry of any kind bought for resale, must be licensed by the GDA. Possessing such a license does not by itself disqualify an individual from advertising poultry in the *Market Bulletin*. Mallard ducks must be at least three generations from the wild before they can be advertised in the *Market Bulletin*. Advertisers must include this information in notices submitted for publication. Out-of-state poultry must have a negative Avian Influenza test and negative pul-lorum test within 21 days of entering Georgia. For more information, call the GDA Livestock and Poultry Division, 404.656.3665.

RIR, Barred Rocks and Speckled Sussex chicks: \$5 each. Call or Text. Larry Waters Jr. **Aragon** 770-591-8005

Selling out – 175 RIR: \$10/ea. 8 months old, no bird flu. Do have poultry wire, post wire for fence, feeders & water containers. Carl Taylor **Meansville** 404-408-8466

Six month old roosters. All raised together in same brood. Sussex Chantecler mix: \$15 each. J. Quick **Rutledge** 706-765-8121

Straight run chicks and hatching fertile eggs. Text for list of breeds available. Aline Bennett **Auburn** 678-227-9535



Straight-run chicks and rabbits for sale throughout the year. Holland Lops, Lionheads, Ameraucanas, BCM, Olive Eggers, Silkie chickens. Rainbow Eggs. Text 9am-8pm. Tyler Martinez **Commerce** 706-410-8954

**NON-TRADITIONAL LIVESTOCK**

Advertisers selling fallow deer, axis deer, sika deer, elk, red deer, reindeer and caribou must submit a current Deer Farming License with the ad. Farmed deer greater than 12 m/o are required to have a negative Brucellosis test within 30 days and a negative TB test within 90 days to move intrastate. Ads submitted without a copy of the license and negative sample results (if applicable) will not be published. For information about deer farming licenses, contact the GDA Livestock and Poultry Section at 404.656.3665. For information on other hoofed stock, excluding llamas and water buffalo, contact the Georgia Department of Natural Resources at 770.761.3044. Camelids (llama, alpaca) must be individually identified; bison (some people mistakenly call them buffalo) and water buffalo must meet the same requirements as cattle. Antelope must be individually and officially identified, and 6 m/o or older are required to have a negative Brucellosis test within 30 days and a negative TB test within 90 days prior to entering Georgia. PLEASE NOTE: Importation of any cervid into Georgia requires a special permit from the GDA State Veterinarian and DNR. At this time, cervids are not permitted into the State.

Emu chicks. Limited amount this year. \$300 each. Text or leave a voice mail. D. James **Madison** 706-207-1561

McClellan saddle for sale. Age unknown. Brass shield states 12 in seat. Saddle in decent shape, missing straps and stirrups: \$100. Betsy Gilman **Conyers** 404-202-8221

Two used western saddles harness for 800lb horse: no reasonable offer refused. Nicky Maddox **Canton** 770-479-6717

Van Den Heuvel marathon team carriage for large ponies or small horses. Made in Holland: \$2500. Call or text. Ken Linthacum **Thomasville** 229-221-4547.

2 applicators; 2 boxes of new ear tags style 681 BRT self piercing; 2 boxes of new ear tags 49 BRT sta-on-stick: \$55 for all. Slate Long **Madison** 706-318-0402

Cattle working systems: 11x5x8 XHD cattle panels (175#), 7-bar, 1.5-inch sch40 frame: \$250; 11x7 bowgates: \$600; 6-piece 180-degree cornerless-sweep: \$4500; 28x7 alley gates: \$450. Animal/worker safe.. Gary **Piedmont, AL** 256-390-3940

Fence Doctor electric fence diagnostic tool: \$50. D. Jones **Flowery Branch** 770-718-7253

Wrapped bermuda grass rolls, sheltered, fertilized, good quality, 100+ rolls: \$40 per. Jeff Dorsey **Nashville** 229-445-1278

SureWeigh cattle scales manual slide 3000lbs capacity: \$1500; Baltic 3pt hitch seeder/fertilizer: \$400; 10ft bull gates: \$220 each. Willard Redwine **Dalton** 706-260-9526

**GOAT SUPPLIES**

Kiko and Boer Kiko goats. Billies, nannies, & kids. Prices depend on what you want. Old and young. Call. Russell Cantrell **Newborn** 770-855-3008

**TACK AND SUPPLIES**

Court's 16in Western saddle, double cinch: \$395; various Clinton Anderson tack for sale: discounted half price, never used. Larry **Kite** 478-455-2535

Five western saddles, all good condition, 15-17inch; also Countyline 8ft round bale feeder: \$250 OBO. Hank Stoehr **Buford** 770-530-7697



McClellan saddle for sale. Age unknown. Brass shield states 12 in seat. Saddle in decent shape, missing straps and stirrups: \$100. Betsy Gilman **Conyers** 404-202-8221

Two used western saddles harness for 800lb horse: no reasonable offer refused. Nicky Maddox **Canton** 770-479-6717

Van Den Heuvel marathon team carriage for large ponies or small horses. Made in Holland: \$2500. Call or text. Ken Linthacum **Thomasville** 229-221-4547.

14-ton feed bin, very good condition: \$500; Stihl SR 450 backpack sprayer, runs good: \$200. Henry **Loudermilk Mount Airy** 706-768-5814

Feed bins, water lines, feeders, heaters, all kinds of gas controllers; also tin and wood. Haddock **Crawford County** 770-468-0411

Portable hen hotel. Houses 250 hens, complete w/hen boxes and outside egg access. Ideal for pastured hens: \$4000 OBO. Scott **Sautee Na-coochee** 404-310-2558

Tube type poultry feeder, holds 30lb feed; also plastic 5gal jugs; also chicken hatchery and incubator, used one time. Call for details. James **Mount Airy** 706-716-9689

**MISCELLANEOUS**

Only agriculture-related items may be advertised in this Category.

**BEEES, HONEY AND SUPPLIES**

5-frame NUCs, laying queen, full of bees. Limited quantity, place order. James Bramlett **Greensboro** 706-347-0190

5-frame VSH Pol-Line 2.2 and VSH Spartan NUCs and Queens; Wildflower, Sourwood, Creamed and Infused Honey; Licensed Honey Bee Removal **Commerce** (706) 362-4951 **BerryLaneBees.com** berrylanebeesga@gmail.com

A complete bee removal solution - swarms & structures. Master beekeeper, state licensed & insured, serving all of GA, located in SW GA. Call or text. Dale Richter **Leesburg** 229-886-7663

Bee removal licensed and insured. Serving Athens and 50-mile radius. Residential and commercial. Daniel Peterson **Blossom Bee Removal Athens** 229-563-3050

Bee removal Valdosta and Southwest Georgia (100-mile radius). Structural bee removal for a fee, swarms free. Licensed and insured. Blossom **Bee Removal S. Peterson Valdosta** 229-563-3050

Bee supplies, new and used. Hive components, upper feeders, frames, foundations tops, bases, nuke structures, box kits - all or partial. Can send pictures. Frank Rodriguez **Atlanta** 404-456-4482



Gallberry honey - Voted Best-Tasting & Flavor of GA winner: \$68 (cash, check, money order)/gallon including shipping. B. Bruce PO Box 88 **Homerville, GA** 31634 912-487-5001 **www.brucesnutnhoney.com**

Over \$35k worth of beekeeping equipment. Everything needed to start or expand a business asking: \$20k, will negotiate. Selling as lot, call for details, too much to list. Floyd **Brasstown, NC** 828-361-5235

Queens, nucs, & beekeeping classes. Melissa **Monticello** www.gsbeez.com. 312-909-3050

Remove honey bees from a structure for a fee, licensed and insured; remove a swarm for free. Also, wanted bee equipment. Leonard Day **Ma-con** 478-719-5588

**AQUACULTURE AND SUPPLIES**

Advertisers selling sterile triploid grass carp must submit a current Wild Animal License from the Georgia Department of Natural Resources. Ads without this license will not be published. Entities producing and selling or reselling domestic fish in Georgia are required to obtain a free Aquaculture Registration Permit. For more information on aquaculture rules and licensing in Georgia, including a listing of domestic fish and other fish species requiring a Wild Animal License, visit <https://georgiawildlife.com/aquaculture> or call **770.761.3044**.

3-12inch+ grass carp, large-mouth/bass, threadfin/shad, coppernose/bluegill, shellcracker, other species when available, pvc holding/catfish cages. inquire about our unique genetics and "live" delivery guarantee. David Beall **Greenville** 706-289-1874

A-1 Worms Big Reds/Euro Great Fishing: \$45/lb; Red Wigglers: \$38/lb. perfect for fishing, composting and worm castings available. Lew Bush **Byron** smokefj@gmail.com 478-955-4780

All sizes - Bass, Bluegill, Channel Catfish, Threadfin, Gizzard Shad, Shellcracker and more. Free delivery or pick up. Danny Austin **Roberta** 478-391-9068

Bass, bluegill, hybrid bream, shellcracker, sterile grass carp, channel catfish, koi. Lake management. David Cochran **Ellijay** 706-889-8113

Grass carp, Bluegill, Threadfin shad, Crappie and Shellcracker. Delivery available at: \$2.50/mile, one way. Brian Simmons **Hawkinsville** 478-892-3144

**FEED, HAY AND GRAIN**

2021 John Deere 460M round baler, silage special, lightly used, high flotation tires, push-bar, surface wrap with twine. Excellent condition: \$38,000 OBO. S. Stana **Carrollton** 770-241-3201

2024 fescue hay, 4x5 net-wrapped for sale. Sprayed and fertilized: \$50 a roll. Carl Henson **Ellijay** 706-264-4477

2024 Bermuda cow and horse hay, sheltered and unsheltered, 4x5 net wrapped bales: \$60 to \$80 a bale. Some delivery available for a fee. Mike **Holiday Pitts** 229-938-8656

2024 High protein UGA tested hay for sale - barn-stored rd/sq Alicia & Russell Bermuda grass. Delivery available. Heath Pittman **Vidalia** 912-293-2535 or 912-537-9721

2024 Premium Tift 44 Bermuda, horse quality, fertilized, weed free, 4x5 roll barn stored, \$100. Tim Hunter **Conyers** 770-331-7749, 770-483-8712

2024 Russell & Alicia Bermudagrass, 4x5, fertilized, net-wrapped. In-barn: \$75-\$85/roll; tarped on pallets: \$60-70/roll (Quantity discounts available); squares: \$8/bale. Delivery negotiable. VM/text. W. Pruitt **Statesboro** 912-682-4481

2024 Russell Bermuda fertilized, 4x5 rolls: \$60/bale. George Temples **Mauk** 678-591-4916

2024 sheltered cow peanut hay, 4x5 net wrapped bales: \$65 a bale. Some delivery available for a fee. Mike **Holiday Pitts** 229-938-8656

2024 sheltered peanut hay: \$55/roll at barn. Delivery available. Glenn Brinson **Tarrytown** 912-288-5960

2024 square bale sell off. Coastal Bermuda or Tift85, fertilized, weed-free, UGA inspected, RFQ 99: \$5/square. 1500 squares available, bulk discounts available. Pierce **Screven Co** 912-659-9726 or mackpierce61@comcast.net

2024 square bales, fertilized, barn-stored. Horse hay: \$10 per bale; cow hay: \$8 per bale; mulch hay: \$6 per bale. Fran **Masters Buford** 770-945-6433

4x5 Rolls of winter rye/mixed grass, good quality cattle hay. Net-wrapped, stored in barn: \$50/roll. Roger Yates **Attalla, AL** 256-295-1049

4x5.5 netwrapped John Deere rolls. Inside and outside stored. Delivery available for mileage. Josh Pennino **Sparta** 706-340-3146

Alfalfa hay, highest quality, UGA tested, 65lb square bales: \$14/ea, also round rolls available; Lespedeza square bales: \$12/ea, 10 bale min. Andy Adams **Hartwell** 706-376-8968

Bermuda hay 4x5, net-wrapped: \$60/roll. Delivery available. David Clemens **Waynesboro** 706-466-2944

Bermuda hay, horse quality, fertilized, weed-free, rain-free, barn-stored. 4x5 rolls: \$90; square bales: \$10. Mitchell **Rutledge** 678-602-8921



# Struggling to Find Reliable Internet?

Lightning-fast fiber internet from Conexon Connect is now available in more places than ever. See if we are in your area today!

844-542-6663 [ConexonConnect.com](https://ConexonConnect.com)



**FEED, HAY AND GRAIN**

Bermuda, mixed hay. Fertilized and rain free, horse quality: \$10/square; \$80/\$60 round. Net wrapped in barn. Large quantity delivery available. S. Stana **Carrollton** 770-241-3201

Chemical-free Bermuda hay, horse & cow quality, 4x5 rolls, small squares. Oat, ryegrass clover, vetch baleage. Andrew Carpenter **Metter** 912-682-9690

Hay for sale, 5 foot bales: \$65 per bale. Dwain Sammons **Eatonton** 478-232-1217

Horse hay for sale. 54In bales on pallets in hay shed. Only 16 left: \$40/bale. Free delivery within Fannin County. Larry Garrison **Blue Ridge** 907-229-6337

Horse quality Bermuda hay, square and 4x5 round bales available. Call for pricing. Taylor Catalano **Toccoa** 706-391-3560

**MULCH AND FERTILIZERS**

2024 wheat straw: \$4.00/bale at barn. Delivery available. Gary Brinson **Tarrytown** 912-286-3191

Mulch hay fescue mix: \$4 per bale Glen Edmonds **Mount Airy** 706-599-3673

Mulch hay, square bales for sale. Delivery possible. Janie Willis **Dahlonega** 706-867-5177

**PLANTS, TREES AND FLOWERS**

Advertisements selling officially protected plants must include a permit to sell such plants. Ads submitted without this permit will not be published. For information on the sale or shipment of protected plants, visit [www.fws.org/Endangered/permits/index.html](http://www.fws.org/Endangered/permits/index.html) or call the U.S. Fish and Wildlife Service, 404.679.7097. For questions about ginseng, visit <https://www.fws.gov/Endangered/permits/index.html> or call the U.S. Fish and Wildlife Service, 404.679.7097.

2025 Georgia Belle peach trees: \$15 w/instructions; eatable fruit banana trees: \$15; muscadine: \$15; Sago palms: \$15; Luffa sponge w/seed: \$10. Whispering Pines Farm. Davis Yaun **Soperton** aikenyaun@gmail.com 678-283-7592

Angel trumpet, Mahonia, Hellebores Christmas Rose, Nandina, Japanese Maples, Night Blooming Cactus, Mother of Thousands, ferns and grasses: \$6/gallon \$3/small. No shipping. Leave message. P. Tillman **Hoschton** 706-654-8639

Apple trees, grafted. Most are late ripening. Good for deer hunting Oct-Dec. Bare root, pickup only, 1yr: \$22; 2yr: \$24. Limited supply. Text for list. Frank McDaniel **Jasper** 678-313-9948

Bare-root Pachysandra evergreen ground cover: 50 plants/\$12. Deer/rabbit resistant, loves the shade, doesn't climb. Can text short video showing what I'm selling and how to plant. Carol **Marietta** 770-490-5685

Japanese maples. All grafted varieties, some 15 years old: Most \$25. A few special ones \$50. Uprights and laceleaf. Carl Wright **Stone Mountain** 614-619-6988



Fast growing privacy trees from our farm and planted for you. Serving Georgia since 2012 GA licensed. John Cowherd **Monticello** 770-862-7442

Native Azaleas - orange, yellow, pink, red, & white. J. Y. Adcock **Newnan** 770-251-2613

One day plant sale, April 16, 9:00AM – hellebores, Confederate rose, hostas and more local plants & bulbs. N. Purvis 505 Kennesaw Ave. **Marietta** GA 30064

Thornless blackberries, beautyberries, burning bushes: \$4/ea; Nandinas, forsythia, crate myrtle, red hot pokers, crocosmias, arum: \$3/ea; variegated monkey grass: free. Other native plants available. Linda **Calhoun** 470-398-9863

Variegated liriope & mondo grass, 1gal pots: \$2/each; nandina, 1gal pots: \$5/ea; Ginkgo trees, 1gal pots: \$10/each. K. Patman **Athens** 706-549-4487

Yucca, Spanish Dagger, 3-foot sprouting sections. Grows to 12ft. No planting maintenance or water req'd. Massive flower display/tasty fruit. Specimen or living fence: \$25/ea. Leave message. E. Julian **Acworth** 678-742-8645

**SEEDS**

Advertisements selling seeds must include a current state laboratory report (fewer than nine months old) for purity, noxious weeds and germination for each seed lot advertised. Ads submitted without this information will not be published. For more information regarding certified seed, call the GDA Seed Division, 229.386.3557.

Cleome, money plant, 4 o'clock, Mexican sunflower, marigold, touch-me-not: \$2/tsp with SASE. (1 stamp for each tsp.) B. L. Savage, 3017 Atkins DR, **Gainesville, GA** 30507

Old-timey Hot Cow Horn, Red Peter pepper seed, Rutger and German pink tomato seed: \$2/pack with SASE. Amory Hall 130 Ellison St **Maysville** GA 30558 470-201-9105

Original old time Stone Mountain red watermelon, 20+ seeds: \$5 +SASE. H. Anthony 567 Bennett Cemetery Rd **Jefferson** 30549 706-367-7116

Red Peter Pepper, Rooster Spur and old-timey Cayenne pepper seeds: \$3/pk (20 seeds). Hot. Send Self-addressed stamped envelope. Terry Madaris 1285 Burnt Mill Rd **La Fayette** GA 30728

**TIMBER**

Timber must be individually owned and produced by the advertiser on his or her personal property. No companies or businesses are permitted to advertise timberland in this Category. Timberland advertised must be at least one acre. Timber wanted ads will not be published.

12 large straight pine trees, great for sawmill lumber, you cut and haul: free. N. Mathis **Rock Spring** 423-321-2098

Rough-cut sawmill lumber for sale. Now taking orders. Call for details. Bobby Robinson **Adairsville** 678-767-8731

**FIREWOOD**

Firewood must be cut from the advertiser's personal property. Ads for firewood must use the cord when specifying the amount of firewood for sale.

Firewood for sale. Larry Smith **Gordon** 478-361-9967

Firewood for sale. Seasoned oak: \$300/cord. Delivery available \$1/mile, one way. Please text. Pat Waldrop **Polk County** 678-232-1077

Mixed seasoned split & green hardwood firewood available: price based on quantity. AA Farms **Hartwell** 706-376-8968

Seasoned or green oak firewood: 1/2 cord: \$125. Truckload or any quantity available. Delivery available. Text/call. Larry Moore **Grantville** 678-278-5709

**FARMERS MARKETS**

The Milly Market Farmers Market, opens April 4 and 18 from 4-7 pm, seasonal fruits & vegetables, dairy, baked goods, honey, handcrafted soaps and candles and more. Debbie Waugh 478-952-3544 millymart.com 222 East Hancock Street **Milledgeville**

**THINGS TO EAT**

Advertisers producing and offering for sale shell eggs at retail to the end consumer must obtain an egg candling certificate from the Georgia Department of Agriculture. The department offers training in egg candling. Email [candling@agr.georgia.gov](mailto:candling@agr.georgia.gov) or call 404.656.3627 for more information.

2024 pecans for sale: \$11 per lb; 2024 Black walnuts for sale: \$20 per lb. Shelled and cleaned. Ready for freezer. Peggy Griffin **Clarksville** 706-768-8417

2024 shelled Elliott pecans, ready to eat-bake-freeze-enjoy: \$12/lb. +shipping. Call/text Mark Parker 229-726-4238 Tressie Parker 229-400-3304 **Moultrie** Facebook: Parker Pecans

Eastern Turkey eggs for sale Taking orders for spring eggs: \$10 each. These eggs are Eastern turkeys legally obtained. Randall Durden **Ellijay** durdenrandy@gmail.com 706-273-9147

Farm fresh eggs, cage-free, all natural: \$5 per dozen. Harriet Chaney **Lithonia** 404-290-1122

Locally-grown beef, USDA inspected, half/whole available, custom cuts: \$5.75/lb hanging weight. We offer ground beef, sausage, steaks, jerky and slaughter your cattle. Potts Family Meats, Kyle **Jefferson** 706-367-5823

Registered high-end Angus beef: \$4.80 LB hanging weight. Can deliver to your butcher. Circa 1000LB Live Wt. Good marbling and tender. 90-day finish. Rich Miller **Monticello** 706-476-1323

Rouen duck eggs for sale. 1.5 x larger than extra large hen eggs. Great for omelets, baking and casseroles. Text. Sandy **Elberton** 706-201-6301

**ODDITIES**

Peacocks feathers: \$30 for whole tail. White and Indian blue. Can send pictures. Text preferred. Mary Grimes **Carlton** 706-202-8784

Swiss-made bells for cows/sheep/goats/dogs. Great for all grazing stock or good door alarm device. The real deal not the decorative China made stuff: \$18-\$30. John Cork **Lilburn** 404-202-4565 [cork9663@aol.com](mailto:cork9663@aol.com)

Visit our farm or call for gourds. The Gourd Pile, 874 Morrison Road, **Barney** 229-775-2123

**HANDICRAFTS AND SUPPLIES**

4-Leaf clovers are lucky. Real 4-Leaf clovers laminated with decorations added. Beautiful gifts. Good price. Please call before 8pm. Please leave message. Chris **Loganville** 770-466-2173

All types of chair caning, re-finishing & repairs. James Lewis **Perry** 478-987-4243 or 478-550-5122

Chair caning in Tiger. Please call for estimate. Donald Becker **Rabun County** 770-807-9783

Chair/rocker caning of all kinds. Wicker/rattan repair. Over 40 years of experience. Also antique furniture for sale, call for current inventory. Duke Dufresne **Statham** 770-725-2554 or (cell) 706-340-5523

Memory Bears made out of your loved ones clothing. Call for more info. Sherry McDaniel **Buford** 770-366-1306

**FARM ANTIQUES**

20 gallons over 100 years old water crock. Used to supply drinking water in cotton mills. 30 inches tall, 55 inches round. Call for photos. Jim Dansby **Hephzibah** 762-716-7354

Antique cast iron bathtubs. Used as flower vegetable planters: \$100 each. Also black iron Wagner Griswold skillets. Leave message. L. Elliott **Conyers** 770-597-9269

Corn shellers; grinders; crosscut saws; plow stocks; old farm tools; post striking anvil; wood toolboxes; vises, furniture; farmhouse sinks; cauldrons; tractor boom/seats; scythes; iron wheels; post hole diggers. Bill **Blairsville** 706-897-0106

Flour cabinet, flour bin with sifter, cabinet storage, 3 drawers, pull out dough board. Hoosier style cabinet: \$300. Paul Hart **Dalton** 706-270-1215

Great collection of antiques including farm tools, tractor implements, glassware, new pony and English horse saddle, never used. No text please. TH Williams **Madison** 404-291-1129

**CANNING SUPPLIES**



Pillan N1 fruit crusher. Manual grape and fruit crusher. Bought \$300 new, excellent condition. Made in Italy: \$150. Call or text. Ken Linthacum **Thomasville** 229-221-4547

**OTHER**

"Pole Dancer" fish attractant. Cotton seed meal cake. Made in GA. Samuel McNeely **Louisville** 478-377-0463

(2) 300gal storage tanks. Need regulator: make offer. James Wells **Monticello** 770-316-6737

500gal fuel tank w/hand pump on skids, old but good condition: \$100; pressure washer, Briggs & Stratton gas engine: \$150. Adkison **Albany** 229-894-5115

About 50-75 quart glass bottles, Coca-Cola, etc. with caps: 25 cents each; Also, gallon glass jugs with thumb hole: \$2 each. Wendell Hall **Lyons** 828-557-9686

C60D Ashley wood stove, 24inch fire box, ash pan. 2-speed thermostat blower control. Excellent shape. Glen Hays **Monticello** 404-272-7298

**REAL ESTATE**

All farm property listed within this category (for sale or rent/lease) must consist of 10 acres or more. Out-of-state subscribers owning farm property within Georgia are allowed to advertise in this category. Real estate agents, businesses, brokers or dealers that sell land on a commission basis are not eligible to advertise.

**FARMLAND FOR SALE**

101 acres south Houston, 4636ft paved road frontage, Turkey Creek, 65 open irrigated acres, 1100 GPM well, pond, deer, turkey. Leo Perfect **Houston County** 478-955-2362

15ac Murphy NC, Liberty Community, Fescue grass, large timber, y/r, stream, paved road frontage, good well & electricity: \$15,000/ac. R. F. Pollard **Kennesaw** 770-427-1201

16 acres, mostly fenced pasture, creeks, hardwoods, nice grass, double road frontage: \$11,500/acre. Paul Lee **Madison County** 706-498-2555

168 acres, 2800ft frontage, 3 entrances on Hwy 319, timberland, hunting, cabin, buildings, electricity, water, improvements, just 5 miles N of East Dublin: \$650,000. Paul Bridges **Laurens County** 912-246-2681

**Market Bulletin Farmland Ad Form**

Ad guidelines: Only farmland of 10 acres or more may be advertised. Include price, acreage and county where the property is located. All property must be for sale by the owner. Limit descriptive terms to property characteristics or structures. A maximum word count of 30 – including name, address, phone number and your city of residence – is permitted in Farmland ads. Only one ad per subscriber per issue. You must be a paid subscriber to advertise in the *Market Bulletin*.

Subscriber number \_\_\_\_\_ County \_\_\_\_\_

I hereby certify that this notice meets all the necessary requirements for publication in the *Market Bulletin*:

**FARMLAND FOR SALE**

212-acre farm, pasture, row crop, highway frontage, improvements, irrigated, 10-acre Lake Wooten, hunting, 6 miles from town: \$7,000/acre. Olin Wooten **Jeff Davis County** 912-375-6016

52-acre farm, timber on Dykes Farm Rd, pond, row crop, US 23 Alma Highway, farmland, improvements, 4 miles from town: \$8000/acre. Olin Wooten **Jeff Davis County** 912-375-3366

95-acre farm, row crop, timber, irrigated, deep well, highway frontage, farmland, improvements, 6 miles from town: \$7,000/acre. Paul Bridges **Jeff Davis County** 912-375-6016

Farmland for sale: 35-40 acres (with or without house in Loganville near Ga. Highways 81, 138 and 20. Great school area. L.C. Chriswell **Walton County** 770-403-9509

Oldest goat livestock market in Georgia. US Hwy 441 frontage, flea market, improvements, storage, signs, apartments, rentals & more: \$450,000. Call for more details. Karen Rentz **Atkinson County** 912-375-6016

**FARMLAND FOR RENT/LEASE**

Want to lease pasture for cattle in or near Oglethorpe County. Tim Rodgers **Lexington County** trodgers88@hotmail.com 706-474-2427

**SERVICES**

**BOARDING FACILITIES**

The Georgia Animal Protection Act requires boarding and breeding facilities to be licensed. A current license number must be submitted with notices for publication in the "Boarding Facilities" category. Notices submitted without this information will not be published. For more information, please call the GDA Equine Health Division, 404.656.3713.

Boarding services – spaces now available. Stall & pasture boarding. Call for details and rates. SBE Farms, Shane Wilson **Kingston** 404-210-5227

**FARM SERVICES**

20+ years experience w/all types tractor/bobcat farm/residential work, bush hogging & mowing, fertilizing, clearing & plowing, seeding/drainage, roads/driveways, grading & erosion control, pasture land maintenance. Will travel. W. Finch **Conyers** 770-714-7464

25+ years of experience in farm, tractor & Bobcat work, bush hogging, grading/clearing, garden plowing, deer plots, post holes, repair heavy/light equipment, certified welder. Larry Houston **Covington** 770-235-3082/770-235-3782

Bush hog your field or pasture and till your garden. Larry Boatright **Dallas** 678-386-1466

47 years of experience. Bush hogging, gardens and food plots plowed, post holes, light grading, equipment trailer hauling. North Georgia. Rick Allison **Buford** 678-200-2040

Ag/farm fencing installed/ repaired including 4 rail, cross-buck, woven, stranded-wire, RAMM, and others; land/pasture management services; wildlife habitat/ food plots. 16 years in business. Georgia Farmworks, Casey Kent **Good Hope** 678-446-8520

Bush hog, rotary mow, garden and food plot, harrow and plow. Monroe County area. Jimmy Waldrep **Forsyth** 478-951-5563

Bobcat/tractor work, seed drill, bush-hogging, post-hole, food plots, land clearing, drive-ways, roads, grading, plowing/tilling, pasture maintenance. Oconee and surrounding counties. www.mikesfarmmandpropertymgmt.com. Michael Ebright **Watkinsville** 770-363-5092

Bush hogging and field mowing. Specializing in slopes and difficult terrain. No job too small. Free estimates. Steve Stuckey **Clayton** 720-227-7555

Bush hogging field-pasture fertilizer spread, food plots and garden tilling, post holes, load dumpster of debris. Richard Martin **Dallas** 678-618-3778

Bush hogging, land harrowing and small land clearing. Call for details, leave message. Jimmy Newsome **Thomson** 706-466-2432

Coyote & hog control, day or night, fully suppressed, thermal scopes: free. Servicing all of GA. Very experienced. Zeb Brown **Dallas** 678-873-6234

Custom pasture tree clearing. Build laser-graded or refreshing horse arenas. Driveways built, regraded, re-graded. Demo houses/barns w/property clean. Barns/house pads graded, horse paddocks, drainage correction, trackhoe, trucking. Insured. Bill **Braselton** 770-231-4662

Down tree removal. Fair prices, fully insured, within 50 miles radius. Chuck Daly **Augusta** 706-564-4383

Electric fence charger repair. Wilfred Milam 8001 S Giles Rd **Douglasville** GA 30135 770-942-4672

Electrical work of any kind. 14 years experience. Rough-in and trim-out, barns, and shops etc. Blue Collar Electric, Michael Polson **Midville** 803-747-1753

Farm & property services - bush hogging & finish mowing, tilling, aggregates, debris removal, food plots & much more. Call for free estimate. Charlton Reece **Waynesboro** 706-871-0831

Farm 911@ Signs – farm safety and emergency signage. An information source for greater peace of mind. Website: www.farm911signs.com Daren Sue Truex **Cumming** 678-628-6767

Fence & gate work, all types – cattle, wood, chain link. Text preferred, calls OK. Dennis Sparks **Monroe** 943-244-8937

Grading-clearing and laser leveling, forestry mulching, agricultural fencing, demolition, creek crossing, erosion control, concrete, driveways, landscaping, hauling, water line install. Service NE Georgia. Todd Cruce **Maysville** 706-614-7177

Install field fence, barb wire fence, horse corrals, 3-board fences, dog kennels – all types of fencing. Tasha Grantham **Villa Rica** 770-313-0088

Lakes/ponds built, repaired, new pipe systems, and clearing, swamps drained, creeks rerouted, drainage problems wetlands restoration, bush hogging home sites. Tim Harper **Peachtree City** 770-527-1565

Loader/backhoe, grading, bush hogging, aeration, tree cutting, branch trimming, pruning, lawn mowing, leaf mulching, chain saw & blade sharpening. Rockdale and surrounding counties. G. Kelecheck **Conyers** 770-597-4878



**Morgan County 4-H**



**Vidalia Onion Fundraiser**



**Pre-Paid Orders ONLY!**  
**Order Deadline:**  
**May 9th, 2025**



Name: \_\_\_\_\_ Address: \_\_\_\_\_  
City: \_\_\_\_\_ Zip: \_\_\_\_\_ Home # \_\_\_\_\_ Cell # \_\_\_\_\_  
E-Mail: \_\_\_\_\_

\*Onions will be harvested at the perfect time for best flavor. We anticipate your pick up times to be Friday, May 16th from 3-6pm and Saturday, May 17th from 8-10am. If pickup dates change, you will be notified.

Orders must be picked up at the Morgan County Extension office.

Orders not picked up will be donated to the local food bank.

Pounds per Bag	Price	Quantity	Total
10 # Bag Vidalia Onions	\$10		
25 # Bag Vidalia Onions	\$20		
50 # Bag Vidalia Onions	\$35		
10 # Bag Red Onions *Not Vidalia	\$10		

Mail orders to:  
**Morgan County Extension Office**  
440 Hancock Street  
Madison, GA 30650

\*please make checks payable to:  
**Morgan County Extension/4-H**



All proceeds are used to provide educational programs, materials, 4-H scholarships and awards.

Questions??  
Contact Shannon Cagle at scagle@uga.edu or 706-342-2214

**FARM SERVICES**

Mobile professional horse training, 30+ years experience. Working initiate colts, horse behavior issues, etc; also hauling horses or horse transportation. For more info, call. AM Horsemanship **Atlanta** 678-308-4002

Mobile welding service – all types of welding, certified, 45 years of experience. Call for details. Within 60mi. Campbell's Welding, Randy Campbell **Griffin** 678-603-0175

Need your livestock moved? I can trailer your horses, cows, sheep, goats and other farm animals to the location. Richard Martin **Dallas** 678-618-3778

Russell Bermuda sprigging service – no till or plant by plow. Perfect for livestock including cattle & horses. Call us to learn more today. Covering all of Northeast Georgia. Taylor Catalano **Toccoa** 706-391-3560



State wide brush cutting. Underbrush clearing, small tree clearing, brush cleanup, bush hogging, property and fence lines, overgrown areas. Thomas Bowlin 678-972-4647

Stump removal service w/stump grinder, 17 years of experience, insured. Reasonably priced, free estimates. Serving areas within 55mi radius of Cartersville. Ron Teems **Kingston** 770-715-1368

Stump removal service w/stump grinder, 17 years of experience, insured. Reasonably priced, free estimates. Serving areas within 55mi radius of Cartersville. Ron Teems **Kingston** 770-715-1368

Stumps ground neatly below ground level, free estimate and reasonably priced. Glen Whitley **Bethlehem** 770-307-7098

**EMPLOYMENT**

**Farm Help Needed and Seeking Farm Employment ads must be related to agricultural farm work. Ads submitted for domestic help, companions, baby sitters, housekeepers, etc. will not be published.**

**FARM HELP NEEDED**

I need an individual to cut, rake, fluff and bale my hay on 11 acres in North Hall area. Steve Pettit **Gainesville** 770-540-1870

I need someone to come and mark my property lines on 55 acres in Burke County. Billy **Waynesboro** 917-414-6202

Looking for a couple w/farming experience to run our 25 acre farm raising livestock and growing flowers and vegetables. House and pay provided. Laura Murrey **Milton** 770-777-5875

Immediate opening for Spanish-speaking male or couple needed to work on bird farm. Live-in position, 4hr/day, 5 days/week: \$250/weekly inc. small apartment. Serious inquiries only. Tere Lopez **Oxford** 770-787-2955

Part-time year-round gardener to prune, plant, weed 10+ acres w/garden and greenhouse. Hourly salary based on experience, bonded, licensed, insured, references. (Call only, 10-8.) Margaret **Dallas** 770-443-7675

**SEEKING FARM EMPLOYMENT**

Responsible adult male looking for local farm work. Years of experience in tractor work, bush hogging, carpentry & fencing. Michael Martin **Thomaston** 706-975-6596

**WANTED**

Items wanted in all Classified Categories will be advertised here.

1972-1975 Dodge Power Wagon 4x4 complete of parts in south GA please. Call. Angus Hatcher **Marianna, FL** 850-573-0591

Companion pony wanted for small 12 hand gelding. **Roberta** 478-332-9911

Historical group looking for 1,033 sq/ft (668 for walls, 375 for ceiling) of old barn wood to finish blacksmith shop used for children's education. Dunwoody Preservation Trust, Barbara **Atlanta** 404-372-4563

I'm looking to buy a cottonseed mill cake press. Please call if you have one. Alan Nemsmith **Cornelia** 706-614-0488

In search of a 500 gallon propane tank. Jeff Baker **Rydal** 770-606-7513

ISO 15.5-38 rear tractor tire, used but good tread. Dean Davis **Warthen** 478-232-9617

Looking for a Singer sewing machine Model 29K, 111W or similar walking foot machine to do small leather projects. Also called patch/cobbler machines. Call or text. Ethan **Adairsville** 770-548-8279

Looking for a single axle trailer 2ft solid walls, 5x10, in good condition. Terry **Riverdale** 478-390-2847 or 770-210-0475

Looking for Red Ripper pea seeds. Danny Adams **Danielsville** 706-296-7514



Looking to buy old handmade pottery. Especially looking for signed examples, face jugs, churns, etc. Text photos to my number. Cash in hand. Stan Clark **Maysville** 770-654-8422

Need a locking ring for a Toledo meat grinder, model 5322 1.5hp. Glen Rowland **Chester** 478-285-2371

Need someone with bucket truck to do work on an outdoor TV antenna. Larry Stewart **Danielsville** 706-789-3771

Regarding flowers wanted. Orlando – phone number missing a number. Call again until you reach me. Jo **Bogart** 770-725-8744

Snapper rider zero turn mower, 61in, single handle, running or not. John Gunn **Reynolds** 478-391-0330

Used PVC pipe, 6-8-10 or 12ft long. Charlie **Carroll County** 770-841-5887

Want a 2-wheel pony cart in good condition with 20-inch heavy bicycle wheels and tires. Wesley King **Appling** 706-830-3900

Want an older model golf cart with a gas engine. Must run. Call between 10 am and 2 pm. Frank Brown **McDonough** 770-898-8701

Want Farmall Cub or Cub Lo-Boy tractor for parts or repair. Thomas Tucker **Lithia Springs** 770-941-2354

Want to buy 15-50 acres of farmland in Northeast GA to expand existing cattle operation. Will keep as family farm. Mostly open pasture with fencing preferred. John **Auburn** 706-310-8060

Wanted - EverRide lawnmower deck 48in or 60in in good condition or will take whole mower as long as deck is in good condition. Charles **Dearling** 706-699-2860

Wanted – deep purple iris rhizomes/fans. Call, leave message or text. Joan Williams **Milledgeville** 478-451-7287

Wanted Ford 2000 or MF 135 tractor in running condition; also looking for older model UTV, preferably in north GA area. Stan **Blairsville** 706-851-1315

Wanted GA or AL indian arrow heads or artifacts, and GA folk art for demonstration and preservation. Text or leave message. Norm **Monroe** 404-372-5078

Wanted. Old timey multiplying onion/shallots sets. Prefer heirloom like my parents grew. Produces clusters of bulbs about as big as end of your finger. Dale **Tallapoosa** 678-395-1673

Wanting a purebred Spangled stag game rooster. Kathy Russell **Comer** 706-783-5297

Would like to purchase an AKC registered Great Pyrenees adult male dog to be used for stud service and protection of farm animals. Mitchell Biggers **Cleveland** 706-878-6402



**Educator, business leaders selected for Georgia Agricultural Hall of Fame**

By Maria M. Lameiras  
The University of Georgia

A visionary leader in agricultural education and research and a stalwart agricultural industry supporter and business leader were inducted into the Georgia Agricultural Hall of Fame on March 21 at the 69th University of Georgia College of Agricultural and Environmental Sciences (CAES) Alumni Association Awards and Georgia Agricultural Hall of Fame Ceremony at The Classic Center in Athens.

The 2025 honorees are David Bridges, a former assistant dean for CAES at UGA's Tifton campus, and Ralph Evans, a business and peanut industry leader whose family has been serving the agricultural community since 1922.

David Bridges, a native of rural Georgia, has dedicated his career to advancing agricultural education and research. His roots in Terrell County have profoundly influenced his life's work, instilling in him a deep commitment to rural communities and agricultural development.

Bridges' research, advocacy, leadership and program development have significantly impacted Georgia's agricultural landscape. His expertise in defending the safety and demand for Georgia peanuts earned him recognition from the U.S. Department of Agriculture, the Georgia Department of Agriculture and the Georgia Peanut Commission, which awarded him a Distinguished Service Award. His pioneering work on weed control in tobacco led to the registration of two novel herbicides for use in Georgia tobacco fields.

As the assistant dean for CAES on the UGA Tifton campus, Bridges was instrumental in establishing undergraduate degrees and increasing the number of graduate students in Tifton. He also oversaw construction of the C.M. Stripling Irrigation Research Park and the Tifton Campus Conference Center. He has served as a regulatory consultant to the U.S. Environmental Protection Agency and the U.S. Food and Drug Administration. In 1994, Bridges was appointed by then-President Bill Clinton to the Agriculture Board of the

President's Council on Sustainable Development.

In 2006, Bridges became the 10th president of Abraham Baldwin Agricultural College, where he transformed the institution from a two-year to a four-year college, and enrollment in agricultural programs tripled to more than 1,500 students. Bridges is also an ABAC alumnus, earning an associate's degree before earning bachelor's and master's degrees from Auburn University. As ABAC's longest-serving



CAES Dean Nick Place, center, gathers with 2025 Georgia Agricultural Hall of Fame inductees David Bridges, a former assistant dean for CAES at UGA's Tifton campus, and Ralph Evans, a business and peanut industry leader, at the awards ceremony in Athens. (UGA-CAES/Blane Marable)

president, Bridges oversaw significant renovations and new construction at ABAC, including facilities for agricultural technology, science, nursing and fine arts.

Today, Bridges continues to lead and advocate for rural communities as interim director of Georgia's Center for Rural Prosperity and Innovation, an organization created by legislation he helped craft in 2018. His vision and dedication remain focused on enhancing both quality of life and economic opportunities in Georgia's rural areas.

Ralph Evans has played a significant role in advancing

agriculture in Georgia through his leadership at R.W. Griffin Feed, Seed and Fertilizer, a company founded by his grandfather, Ralph Waldo Griffin, in 1922. Evans' grandfather instilled a work ethic and passion for agriculture in him at an early age, recalls Evans, who helped out measuring garden seed for customers at his grandfather's store before and after school as early as age 9.

After graduating from East Tennessee State University, Evans' influence in the industry was felt early in his career as he was invited to join the board of the crop protection cooperative buying group, Chem Nut Inc., in 1983, joining its executive board in 1995. During his tenure, Chem Nut has expanded to 40 states and more than 400 independent agricultural retailers.

Evans took a lead role in organizing Premium Peanut and serves on its board of directors. Premium Peanut has grown to 480 producer members, accounting for approximately 10 percent of the U.S. peanut crop, making Premium Peanut one of the largest shellers in the country.

Since taking over the family business in 1977, Evans has expanded it from a single location with 25 employees to a conglomerate of 42 companies with more than 500 employees.

This growth includes 21 agricultural retail stores, seven wholesale fertilizer terminals, two cotton gins, and four peanut buying points, making it one of the largest privately owned diversified agribusinesses in the Southeast. The R.W. Griffin family of companies services hundreds of thousands of acres of Georgia crops every year.

Under Evans' guidance, R.W. Griffin has adapted to the evolving needs of Georgia's farmers, emphasizing principles of service, integrity, and mutually beneficial partnerships. This approach has nurtured loyalty among employees and farmers alike.

Learn more about the Georgia Agricultural Hall of Fame at caes.uga.edu/alumni/recognitions. Visit caes.uga.edu/alumni to get involved with the CAES Alumni Association.

Maria M. Lameiras is a managing editor with the University of Georgia College of Agricultural and Environmental Sciences.

## SCHOOL NUTRITIONISTS: Solutions sought to challenges to farm-to-school potential

Continued From Page 1

he and Rayfield have known each other for several years. Rayfield once served as a livestock judge at a show where Harper competed in high school.

“Dr. Rayfield comes to us with a lot of experience as an Ag educator, a school superintendent and school administrator, so he understands the school systems, but he also understands agriculture, and I thought that was a phenomenal marriage,” Harper said.

The school nutritionists at the luncheon said they are always trying to find ways to introduce fresh foods for children in their schools. They also found it rewarding to incorporate food into teachers’ lessons. These educational components cover good nutrition and teach students where their food comes from and how producers work to plant, tend and harvest it.

However, the biggest challenge is connecting the school systems with local farmers.

Jeana Smith, nutrition director for Thomas County Schools, explained that farmers in her area sell their products at a farmers’ market or to a food distributor at a buying point. The challenge, Smith said, is that they are not set up logistically to sell their products to local schools.

“I think farmers have a hard time getting their foot in the door with school nutrition. It’s not one of the markets they typically look at or work to sell to,” Smith said.

Also, Smith said it was initially difficult to find farmers

willing to sell to local schools, noting at one point, she turned to social media to get the word out.

Smith’s school district participated in the Local Food for School Cooperative Agreement (LFSC) grant program, which was put on hold as the Trump Administration reevaluates programs across the federal government. Smith said the LFSC helped them with money to pay for local food and collaborate with other school systems to find farmers.

“They would say, ‘Oh, we got collard greens from this farm in Vienna,’ so I would reach out to them, ‘I heard you sold collard greens to Crisp County. Do you ever drive down to Thomasville?’” Smith said.

Harper promised his Department would work to create opportunities for connecting farmers with schools not only with Rayfield but with GDA’s Georgia Grown program. Georgia Grown works closely with its members to market their products and find new customers, which Harper said could be a resource for schools.

An example of that work was on display during the luncheon. Granderson is a member of the 2025 Georgia Grown Executive Chefs class. The Executive Chef program is a partnership between GDA and the Georgia Restaurant Association to strengthen awareness of Georgia Grown products around the state. The program also acknowledges culinary professionals prioritizing Georgia Grown in their restaurants,

schools and communities.

Granderson prepared Springer Mountain Chicken Schnitzel with roasted garlic mash, mustard cream sauce and roasted vegetables, all sourced in Georgia.

Before joining the Executive Chefs program, Granderson didn’t realize the amount of agricultural products in Georgia that were available to him. He is now converting his menu to be as close to 100 percent Georgia Grown as possible. A frittata on his brunch menu has caramelized onion and mushrooms from Georgia. All of his seafood comes from Savannah. He is currently looking for an egg supplier.

Granderson said he was glad to host the luncheon and appreciated school cafeteria workers. “They’re the ones feeding the next generation,” he said.

Granderson added that it was in line with his work with Wholesome Wave Georgia, a non-profit that seeks to make fresh, healthy, locally-grown produce affordable and available to all Georgians.

Granderson praised the work of organizations like Wholesome Wave and Georgia Grown, stating that Wholesome Wave supports food access for low-income families, and Georgia Grown is working to connect farmers with schools, ensuring kids get the best of Georgia’s fresh produce.

Granderson added, “It’s also teaching them how to eat and what to eat, so I’m all for that.”

## GEORGIA COOKING: Vidalia onions three ways

Celebrate the sweetness of spring with Vidalia onions! Just in time for Vidalia Onion Pack Day this week, we’re bringing you three delectable recipes straight from chefs featured on the Vidalia Onion Committee website. From savory to sweet, these dishes highlight the versatility and delicate flavor of this seasonal treasure. Get ready to transform your kitchen with these chef-approved creations, perfect for welcoming the vibrant flavors of early summer.

### Green Tomato & Vidalia Onion Crumble

#### Ingredients

2 Tbsp extra virgin olive oil  
2 Tbsp chopped garlic  
1½ lbs. Vidalia onions, julienned  
2 lbs. green tomatoes, rinsed, cored and medium dice  
¼ cup fresh basil, chiffonade

2 Tbsps fresh oregano leaves, rough chopped  
As needed kosher salt  
As needed cracked black pepper  
3 cups French baguette, cut into medium dice  
2 Tbsps Old Bay seasoning  
½ cup unsalted butter, melted  
½ cup Parmigiano Reggiano, grated

#### Instructions

1. Preheat oven to 375 F



(VOC/File Photo)

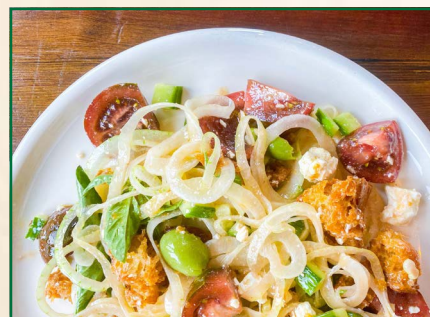
- Heat olive oil in a skillet over medium heat. Add Vidalia onions and chopped garlic. Cook onions while stirring until they begin to brown and caramelize, about 6 minutes. Season onion and garlic mixture with kosher salt and remove from heat once golden brown.
- Place the onion mixture into a 3-quart baking dish with sides at least 2 inches high, and spread onions evenly onto the

bottom of the container.

- Toss together the diced green tomato, basil, and oregano in a bowl. Season generously with kosher salt and cracked black pepper. Evenly distribute the tomato mixture on top of the onion mixture.
- Place diced bread, Old Bay Seasoning, melted butter, and Parmigiano Reggiano in a separate bowl and mix until thoroughly coated.
- Place bread mixture on top of tomatoes evenly.
- Place Tomato and Vidalia Onion Crumble in a 375 F oven cook for 20 minutes until topping is golden brown and juices are bubbling. Cool for 5 minutes and serve warm.

Serves 8

Recipe courtesy of Kenneth Hardiman



(VOC/File Photo)

### Early Summer Salad

#### Ingredients

2 cups torn sourdough bread  
1 Tbsp olive oil

1 large Vidalia onion, shaved against the grain  
Salt to taste  
½ cup simple vinaigrette  
2 cups diced cucumber  
1 pound heirloom tomatoes, cored and diced  
1 cup fresh basil leaves  
1 cup crumbled feta cheese  
1 cup pitted Castelvetrano olives, halved

#### Instructions

*Cook’s note: An onion has a top, and a root end. Picture those as the north and south poles. The grain runs in arcs from pole to pole. You want to cut the onion at the equator and then shave it into large rings against the grain. I use a mandolin*

*for this, but you can use a knife. Just make the rings very thin. If the onion is too large for the mandolin then you can cut it in half from pole to pole and then shave against the grain, resulting in half rings.*

- Preheat oven to 350 F.
- Toss the bread with the olive oil and place on a sheet pan. Toast in the oven until golden brown, about 10 minutes. Set aside.
- Place the shaved onions in a bowl and season with a pinch of salt, and half of the vinaigrette. Toss well.
- Add the cucumbers, tomatoes, basil, feta, and olives to the bowl of onions. Season with a pinch more of salt and

add the toasted bread. Toss well and arrange on a platter.

### Simple Vinaigrette

6 Tbsps olive oil  
2 Tbsps red wine vinegar  
1 tsp Dijon mustard  
1 whole clove garlic, peeled and smashed a bit  
½ tsp Kosher salt

Combine all in a jar that has a lid. Secure lid and shake vigorously. Set aside. Shake before use. Fish out the garlic before you use the vinaigrette.

Serves 4

Recipe courtesy of Hugh Acheson

### Vidalia Onion & Mushroom Toast

#### Ingredients

¼ cup extra virgin olive oil  
2 Vidalia onions, or 8 cups, sliced quarter-inch thick  
2 Tbsps whole butter  
10 ounces shiitake mushrooms diced small  
½ Tbsp thyme, chopped  
¼ cup dry sack sherry  
½ cup heavy cream  
¾ Tbsp kosher salt  
1 Tbsp Dijon mustard  
6-8 thick slices crusty sourdough bread, about 5 inches wide by ½ inch thick  
6 ounces Gruyère cheese or 1 ¼ cups, grated  
¼ cup parsley, chopped

#### Instructions

*Cook’s note: Taking the time to caramelize Vidalia onions accentuates their inherently sweet flavor and gives them a creamy texture that I love on crispy toast. This is great with or without the mushrooms but I love the earthiness the mushrooms add to the flavor. This is a great dish to make ahead of time and pop in the oven once your guests arrive.*

- Preheat an oven to 400 F. Place a 14-inch cast iron skillet or sauté pan on the stovetop over medium heat. Add the extra virgin olive oil and sliced onions and cook for about 30 minutes while stirring frequently until onions have turned a deep golden brown and are very soft. Remove the onions and set aside.



(VOC/File Photo)

- In the same pan, also over medium heat, add the butter and mushrooms and let cook for about 10 minutes or until the mushrooms are caramelized.
- Add the onions back to the pan with the mushrooms, along with the thyme, salt and sherry. Let cook until the onions and mushrooms have absorbed all the liquid.

This should take about 2 minutes.

- Add the heavy cream and cook for another 2 minutes. Remove the mixture from the pan and set aside. You can move onto the next step or chill the onions and mushrooms and finish the recipe at your convenience.
- Distribute the onion mixture evenly over the sliced bread and place onto a baking sheet. Distribute the shredded cheese evenly on top of each slice. Place into the hot oven and bake for about 12 minutes or until the cheese is melted and golden, and the sides of the bread are crispy and toasted.

- Slice each toast in half and serve.

Serves 6-8

Recipe courtesy Alon Shay.

# Fun on the Farm! An acre of activities for young people.



Help Georgie make this recipe. Circle the ingredients needed to make the salsa. Color the correct number of tomatoes, onions, and peppers needed for the recipe.



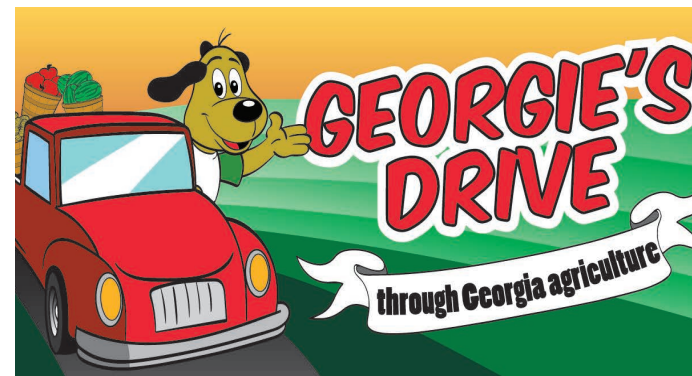
## TACO'BOUT A YUMMY SALSA RECIPE

- 4 medium tomatoes, diced
- 1 small green bell pepper, diced
- 1 medium Vidalia onion, diced
- 2 tbsp. fresh cilantro leaves, chopped
- ½ tsp salt
- ½ tsp black pepper
- 1 small lime, juiced

- 1) Dice tomatoes, green bell pepper, and Vidalia onion; place in a large bowl.
- 2) Chop cilantro and add to bowl.
- 3) Measure salt and black pepper then add to bowl.
- 4) Juice lime and add to bowl.
- 5) Mix all ingredients until thoroughly combined.

### Join in the fun and get published!

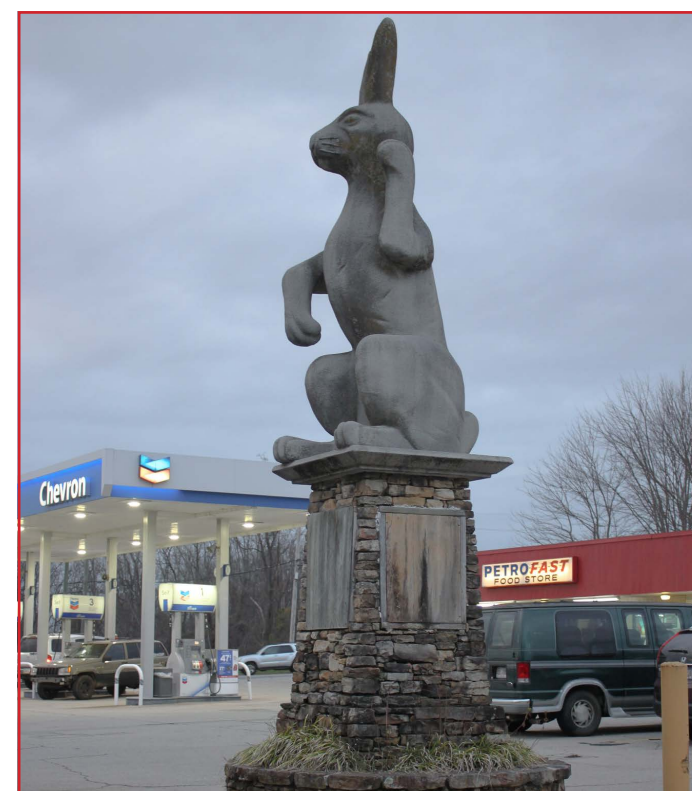
We invite you to share your colorful creations to be published in the Market Bulletin. Submit your artwork to [marketbulletin@agr.georgia.gov](mailto:marketbulletin@agr.georgia.gov) or mail to Georgia Department of Agriculture, Attn: Market Bulletin, 19 Martin Luther King Jr. Drive S.W., Atlanta, GA 30334-4250



## Georgie's Drive thru Rabbittown

Hello! I'm Georgie, the Georgia Grown mascot. I travel the state of Georgia promoting our #1 industry, agriculture! Spring is here and it's almost my favorite holiday of all, Easter! I love coloring eggs, hiding them, finding them and eating them! I know of no better place in Georgia that represents Easter than Hall County because Gainesville is the Poultry Capital of the World and don't forget about little ol' Rabbittown. Just off I-985 at Old Cornelia Highway, you'll find the Rabbittown Café with a huge rabbit statue out front that was built in 1993.

According to a plaque on the statue, "It's a hoppin' little place!" Rabbittown got its name because of all the rabbits they used to grow there for people in Gainesville to eat when they got tired of chicken fingers, I guess! In 2010, Rabbittown was featured in a Payless Shoes Easter commercial featuring a local barn that was painted up special for the occasion, as well as the Rabbittown statue.



This 20-foot tall rabbit statue is a well-known symbol for the Rabbittown community in the northeast corner of Hall County, just off Interstate 985. The story goes that after Gainesville erected a tall statue of a chicken, the people of Rabbittown put up a bigger statue of the rabbit. (GDA/Lee Lancaster)

## Recipes for Tiny Tasters!

### Traditional rice pudding

Submitted by Janelle Spivey, 7th grade, Bulloch County 4-H  
 Rice pudding is a delicious, traditional Southern dessert. It's versatile, nutritious and perfect for any occasion.  
 Makes: 4 servings  
 Prep time: 25 minutes

#### Ingredients

- 1½ cup of water
- ¾ cup white rice
- 1 can (12 ounces) evaporated milk
- ½ cup of sugar
- 1½ tsps vanilla extract
- ½ tsp cinnamon
- ½ tsp nutmeg
- ¼ tsp salt
- 2 large eggs, lightly beaten

#### Directions

1. Place water and rice in a medium saucepan, bring to a boil.
2. Reduce heat to low, then cover.
3. Cook for 12-15 minutes or until liquid is absorbed.
4. Stir in evaporated milk, sugar, vanilla, cinnamon, nutmeg and salt.
5. Crack eggs in a bowl then stir a portion of the rice mixture.
6. Add egg/rice mixture and blend well with a whisk.
7. Bring to a boil, stirring constantly for 2 minutes.
8. Serve warm or chilled.



Special Photo

Courtesy of Georgia 4-H Pantry Pride program

## YOUNG ENTREPRENEURS: FLEX program offers workforce development for Georgia's future

Continued From Page 1

a truck and auto repair business.

Hilsman said he had worked on engines since he was four years old. "This is my dream, it is what I've wanted to do," he said. Hilsman said he plans to invest the winnings into his business and buy tools and possibly a car lift.

Isabelle Peek of Houston County received \$7,500 for second place for her photo and video business, CATCH Film and Media. Peek told the judges that she started the business to help high school athletes prepare for attracting college scholarships and NIL (Name, Image and Likeness) money through tailored social media photographs and videos. She plans to take college courses online through Arizona State University while continuing to build her business.

Lauren Harris of Sumter County received \$2,500 for third place for her business, Laurynce Fragrance, a line of androgynous fragrances. When a friend developed a rash from using perfume, she was inspired to make her fragrances with all-natural ingredients. Harris started her business with a \$150 loan from her mother, which she paid back, and built her brand of 16 fragrances that she sells on social media and Esty. She plans to attend Georgia Tech and continue developing her business.

FLEX began five years ago at Fitzgerald High School College & Career Academy as a tool in business education. It has grown into a state-wide program at 10 high schools. FLEX is a partnership between local businesses and young people in their communities. As students build their businesses, local businesspeople help by being mentors. Many of the students credited their mentors with helping them start their businesses and keeping them going with advice and encouragement.

FLEX Executive Director Melissa Dark explained that the program not only teaches students about business but is also a workforce development tool for the state to prepare the next generation of workers. With FLEX, students learn valuable life skills like time management, financial literacy, self-confidence and responsibility – skills that employers seek.



Isabelle Peek of Houston County delivers her business pitch to judges during the final round of the Georgia FLEX State Finals in Tifton. Peek's business, CATCH Film and Media, creates promotional media for high school athletes. (GDA/Jay Jones)



The three Georgia FLEX State finalists congratulate each other with judges after the event. Stephanie Stuckey of Stuckey's Corp. congratulates Third-place finisher Lauren Harris of Sumter County. Looking on from left to right: Judges Chris Clark of the Georgia Chamber of Commerce, Kristen Dunning of Gently Soap, Jamal Lewis of Partnership for Inclusive Innovation and Nick Carse of King of Pops. (GDA/Jay Jones)



Addison Hilsman of Morgan County won the 2025 Georgia FLEX State Finals with his business, Elite Diesel Performance and Accessories. He planned to invest the \$10,000 top prize into his business. (GDA/Jay Jones)

"Success isn't defined by winning the competition, but by participating in it," Dark said.

"So whether our students continue down a path of entrepreneurship and fill up one of those storefronts in our local downtown, or if they come to work at one of our businesses, they are equipped and prepared to be a great employee and have a great life at your business and better themselves up that ladder with these skills," Dark said.

Dark added that although there is only one winner and two runners-up, that group makes up 12 percent of all students who have competed in FLEX. But overall, 59 percent of all students' businesses are still in operation.

Chris Clark, president of the Georgia Chamber of Commerce, served as one of the judges on stage. During a luncheon with FLEX partners, he said that programs like FLEX are needed as the state prepares for the next 25 years. According to the Chamber's Georgia 2050 strategic plan, the state is projected to see significant growth in population and job demand. Georgia is expected to add 2.5 million residents and 3.1 million new jobs.

Clark told the gathering that the workforce will be more diverse and younger as Baby Boomers and Gen Xers approach retirement age. The advancement of technology will also mean employers will need a different set of skills from workers.

Georgia Grown is partnering with the Georgia FLEX competition to encourage student business development. Demonstrating this commitment, they are awarding a complimentary one-year Georgia Grown membership to all 10 high school students competing in the FLEX State Finals.

To learn more about FLEX and to become a FLEX community, visit [georgiaflex.org](http://georgiaflex.org).

The Georgia Chamber of Commerce will be presenting Georgia 2050 on a tour across the state beginning on May 28 in Dahlonega. Go to [gachamber.com/Georgia-2025](http://gachamber.com/Georgia-2025) for more information and tour dates.

## RURAL STRESS SUMMIT: Summit works to expand rural Georgia mental health care

Continued From Page 1

Mike Toews, assistant dean of the UGA Tifton Campus and incoming associate dean for Extension, noted in his introduction that farm stress remains a detrimental factor for farmers five years later.

"Farmers risk everything they have every year to make it work, and the fact that farm income continues to go down is something that bothers all of us," Toews said.

According to the UGA Ag Forecast for 2025, economists expect Georgia's net farmer income to be \$2 billion this year, compared to \$5 billion in 2022. The biggest causes are increased costs for inputs and uncertainty in what prices farmers can expect for their crops. "Once again, there are so many factors that are out of our farmers' control," Toews said.

The topic across the summit was finding ways to break down barriers to be able to talk about suicide. Connie Baptiste, a veteran and fourth-generation owner of Hunter Family Farm, discussed how changing the way people approach suicide from the individual to the community level can make a difference.

"It is to be able to build a space that people are comfortable with coming into to know that they won't be ashamed, they won't be made to feel like they've done something wrong," Baptiste said. "The suicide prevention community is now not saying 'committed' suicide. They're switching to completed,

because words matter. Committed sounds like a crime. Completed sounds so much more receptive with individuals. So if you didn't complete suicide, we want you to understand there is hope."

Baptiste explained that changing the approach to suicide can open the door to developing prevention plans. She noted an example in the city of Atlanta mental health teams assist the police in calls involving a mental health crisis.

"Don't make the individual feel shamed because it's okay not to be okay and to know your resources because you can't help me if you don't know where to go get help," she said. "The plan has to be done so much further ahead than just today and the now. So it is knowing the resources, building a plan and being open."

Kevin Tanner, commissioner of the Georgia Department of Behavioral Health and Developmental Disabilities, said the most effective tool available now is the Georgia Crisis and Access Line (GCAL), the state's connection point for the 988 Suicide and Crisis Lifeline that offers free and confidential help through a phone call or text.

Tanner also noted his department's ongoing Farms to Faith Initiative, where they connect with local faith leaders to help farmers talk about their stress. "We looked around and said,

"Who do farmers trust? Farmers trust each other, they trust their spouses, and they usually trust their preachers," Tanner said. "If we can get to the spouse, the farmer and the faith leaders, we can start breaking down that stigma for the agriculture community."

Georgia Agriculture Commissioner Tyler Harper spoke about his first-hand experiences of stress in the past year with Hurricane Helene and the ongoing avian flu outbreak as significant sources of stress. Harper said as a state agency, the GDA strives to be more responsive to the Ag community when disaster strikes.

"We're working to shift what that means to us as an agency," Harper said. "Part of that is ensuring that we have our expanded rural capacity when those emergencies happen, like a hurricane, like avian influenza, we're able to respond quickly and address those issues immediately."

The GDA is also a founding partner of the Georgia Agricultural Wellness Alliance, which works proactively to combat farm stress and reduce suicides in rural Georgia. The GDA utilizes its network to help disseminate information on mental health resources specifically tailored for the agricultural community with its partners, including Mercer University's School of Medicine, Georgia Farm Bureau and UGA Extension.

Find Georgia Agriculture Online! [www.agr.georgia.gov](http://www.agr.georgia.gov)



@GeorgiaGrown: <https://twitter.com/GeorgiaGrown>



[www.facebook.com/georgiangrown](http://www.facebook.com/georgiangrown)



@iamgeorgiagrown: <https://www.instagram.com/iamgeorgiagrown/>



<https://www.instagram.com/gamarketbulletin/>



[www.facebook.com/GaMarketBulletin](http://www.facebook.com/GaMarketBulletin)

### Notice

Ads for the April 30 issue are due by noon, April 17. Submit your ads online any time at [www.agr.georgia.gov/market-bulletin](http://www.agr.georgia.gov/market-bulletin)